



Request for Proposals for Landscape Architectural Services for Veterans' and First Responders Memorial Plaza



Respectfully Presented By:



December 22, 2022



ARCHITERRA
DESIGN GROUP
LANDSCAPE ARCHITECTURE AND PLANNING

December 22nd, 2022

Grace Wichert, Procurement and Contracts Specialist
City of Beaumont
550 E. 6th Street
Beaumont, CA 92223

Re: Landscape Architectural Services Veterans and Public Safety Plaza

Ms. Wichert:

We understand the successful renovation of the Veterans Memorial Plaza is very important to the City, and the surrounding residents of your community. A key factor to the success of your project will be determined by the selection of a creative and professional consultant team with the required skills and experience to achieve your design goals. **We are that team.** We bring to your project our experience with public facility renovations. We are familiar with the project, having created the initial conceptual design for this plaza and would be thrilled to continue working with the City to prepare the final construction documents and oversight to see this venue come to life.

We have a 31-year history of providing award winning design and customer service excellence. We have a successful history of working with many public agencies. We worked with the City of Compton on their MLK Jr./Cesar Chavez Monument, and neighboring Moreno Valley on their open-air amphitheater. Additionally, our recent awards include the American Society of Landscape Architects (ASLA) 2021 Honor Award for Phil & Nell Soto Park in Pomona; 2021 Merit Award for Desert View Conservation Area, Joshua Tree; 2021 Merit Award for The Farm at Fairplex Pomona; 2010 Honor Award for the Etiwanda Preserve in Rancho Cucamonga; 2012 Merit Award for the Cucamonga Valley Water District Campus; and the American Public Works Association (APWA) 2011 Project of the Year award, and the 2012 ASLA Merit Award for the Cucamonga Basin #6, located in Upland, CA.

Architerra Design Group's (ADG) staff for this project will consist of President **Richard Krumwiede, #2834**, providing project and team oversight; Director of Design, **Gregg Denson, #4302**, will oversee the design development phase; and **Ryan Skolny #6551**, will provide project management, along with maintaining the project schedule, for the project duration and will be the main point of contact with the City. Mr. Skolny is also the project manager for the Tri Pointe Homes Atwell development in neighboring Banning.

Our subconsultant team will include: **Madole & Associates, Inc.**, for surveying and civil engineering, **JCA Engineering** for lighting and electrical design, **California Waters** for the water feature design, and **RGSE** for structural engineering.

In this proposal we have provided a thorough overview of our assumptions of the City's issues and needs, a detailed scope of services for completion of a successful project, and references for similar projects completed by our office demonstrating our qualifications to meet the unique needs of this project. I am confident we have provided the City with a valuable, in-depth, and thorough proposal outlining our work plan and tasks to successfully complete the design and documents for the park. We are ready to start work immediately.

As owner and president, I am authorized to submit proposals, negotiate fees and terms on behalf of ADG with the City of Beaumont. I will personally be the Principal available throughout the term of the project, and my California license, physical address, internet address, telephone, and fax numbers are shown on our letterhead. We are an independently owned firm and operate under the auspices of my California Landscape Architecture License #2834, in Rancho Cucamonga.

My signature below constitutes certification that Architerra Design Group, under penalty of perjury, complies with nondiscrimination requirements of the State and Federal Government.

We are in receipt of Exhibit C and Addendum No. 1 dated December 9th, 2022.

Sincerely,

A handwritten signature in black ink, appearing to read 'Richard Krumwiede', with a long horizontal flourish extending to the right.

Richard Krumwiede, President PLA #2834
email: krumwiede@architerradesigngroup.com



Table of Contents

Introduction	1
Approach	1
Firm Profile/Company Overview.....	3
Key Personnel and Resumes.....	4
Project Experience	8
Public Agency References.....	10
Scope of Services	11
Insurance	15

Appendix

- Richard Krumwiede's California Landscape Architect License
- Resumes
- Examples of Work

INTRODUCTION

Architerra Design Group (ADG) will provide the services of Landscape Architecture and be the lead consultant for the project. Our office is located at 10221-A Trademark Street, Rancho Cucamonga, CA, 91730. Our phone number is (909) 484-2800, and the firm's president, Richard Krumwiede, will be the point of contact if further information is required.

As previously mentioned, our subconsultant team will include: Madole & Associates, Inc., for surveying and civil engineering, JCA Engineering for lighting and electrical design, California Waters for the water feature design, and RGSE for structural engineering. ADG has worked with our team of sub consultants on many projects as listed in our "Key Personnel" section. We have confidence in the team and their work product, having collaborated for over 15-years and having won awards on collaborated projects.

The objectives on how the Scope of Services will be accomplished are outlined in the Approach below.

APPROACH

ADG was initially retained by the City of Beaumont to prepare a conceptual landscape master plan for the redesign and expansion of the existing Veterans and First Responders Memorial Plaza at the front entry to City Hall. ADG worked with City Staff and the Memorial Plaza Committee to develop initial designs and a final phased master plan and preliminary cost estimates for the improvements.

To create accurate base sheets, we have included the preparation of a topographic ground survey for the site so that existing trees and any above ground utilities are precisely located (by Madole & Associates, Inc.). We have also included within this proposal our consultant JCA, who will handle the electrical engineering design and construction documents for the plaza. In addition, ADG also has included the design and engineering services of California Waters, a specialized water feature consultant who will work with ADG to handle the design development, engineering, hydraulic, electrical, and structural construction documentation of the water features included within the design of the plaza. RGSE will provide structural calculations for the flagpole and clock relocation.

This proposal addresses the further design development and preparation of final construction documents and specifications as required for final City plan approvals. Additionally, our scope of services includes construction administration services to assist with oversight of installation of the completed plans.

- Per the RFP, our services will be completed in four phases: Design Development, Construction Documents, Electrical Engineering Plans and Construction Administration.
- During the design phase, we will attend a project kick-off meeting with City staff to discuss the project program, and time schedules, noting any changes that may affect the design direction.

- Utilizing our staff and our consulting civil engineer, we will visit the site and provide a thorough site analysis of existing conditions, to help identify potential design opportunities as well as design constraints. A topographic survey will be prepared by our Madole & Associates and will be the basis for preparing our project design base sheet. California Waters will prepare preliminary schematic design for the water feature.
- During the Construction Document phase ADG will prepare the demolition plans, construction documents, along with planting and irrigation plans. We will work with California Waters on their final plans, and RGSE will provide their structural calculations.
- For the Electrical Engineering plans, JCA will design the electrical construction documents reflecting new plaza courtyard pole lighting, flagpole up lighting, monument up lighting, power pedestal, water feature connection and plaza security surveillance, and Exterior Site Title 24 calculations and Photo Illumination Plan.
- During the Construction Administration phase of the project, ADG's project manager will attend the pre-construction meeting, as well as respond to contractor RFI's and clarifications, as needed, to ensure proper interpretation of the construction documents, and completion of the work.
- All plans will be prepared in AUTOCAD, and deliverables will be provided to the City in accordance with those outlined in the RFP.

Our line-item Scope of Services are further detailed on page 11 and are listed in order of anticipated completion.

QUALITY CONTROL AND ASSURANCE

Timeliness/Work Schedule

It is understood that time is of the essence. ADG will provide services within the number of calendar days as authorized at the time of the project assignment, after the commencement date specified in the notice to proceed. A project schedule is typically completed by our team in "Fast Track", detailing each projects phases and tasks for Client review and approval prior to the start of work. Additionally, ADG's projects are consistently completed on time, due to our Principals active involvement during the progression of our projects through weekly project management meetings and proactive staff scheduling.

Quality Assurance Program

Our size gives our Clients the advantage of working with an experienced principal from project start to finish, which increases the level of service and product quality throughout all phases of project development. Our office has developed project design standards, construction document standards, and cost estimating programs, which enable us to provide drawings and projects to our Client's, which are consistently higher than the "professional standard of care". Additionally, all projects are reviewed in-house for errors and corrections prior to Client and/or Agency submittals.

Communications

Communication with our Clients, regarding their project's progress, is also a part of our quality assurance program. Clients are updated bi-weekly through written "Project Status Reports" prepared by the project manager. 90% of our business is either repeat business from established Clients or referrals from our Clients and Public Agencies. This is a direct result of our office's high standards for design, construction documents, and client service.

Cost Estimating Process

In support of our Value Engineering process, ADG prepares "Statements of Probable Construction Costs" as required by the project's scope of services. The "Statements of Probable Construction Costs" are prepared using Excel spreadsheets, which have been developed by our office to accurately estimate our project's costs. The office "master" is updated annually using bid data from our clients, contractor surveys, and material cost multipliers. "Statements of Probable Construction Costs" are generally prepared during the Schematic Design, Design Development, and Construction Document Phases for in-house and client review, and input.

Value Engineering

An important element in our firm's success is our ability to meet the Client's construction budgets. Prior to the start of the design process, we thoroughly discuss the Client's anticipated improvement cost for each phase of development. Based on this initial feedback, value-engineering studies are conducted to determine the actual improvements possible to maintain the budgetary constraints. ADG then carefully coordinates all phases of design development with the approved construction budget. This creates projects that are consistently constructed at or below the original estimate of projected cost.

FIRM PROFILE/COMPANY OVERVIEW

The firm was established in 1991 by Richard Krumwiede, a licensed Landscape Architect with over 40-years' personal experience in the landscape design and construction industry. ADG is a California S-corporation and SBE located in Rancho Cucamonga, CA.

Currently the office is staffed with 17 full-time professional employees, including five California licensed landscape architects. The entirety of our staff holds either a bachelor's or master's degree in Landscape Architecture, or related fields.

The primary goal of ADG is to be attentive to our client needs by producing aesthetic, drought tolerant, sustainable, cost effective, and innovative design solutions. We achieve this by developing strong design concepts that guide each project from the initial design phase to final construction. Consistently striving to achieve this goal, we work with the client to produce projects of lasting value. We are native planting designers and utilize efficient, state of the art irrigation and LID principles in every project.

Our project experience covers public and private developments of all sizes. These projects include amphitheater/gathering areas, new and renovated parks, plus other public agency projects such as civic centers, fire stations, public service facilities (police/fire/library), design guidelines, streetscapes, open space design, trails, and water

quality basins; institutional projects including universities, colleges, K-12, and health care facilities; and private development projects consisting of master planned communities, commercial and industrial developments.

Technical skills range from the preparation of simple design tissue sketches to formal and elaborate presentation graphics and plans, perspective drawings, construction documents, design guidelines, manuals, and construction administration services. The office is digitally functional, utilizing the latest Auto CAD and LandFX software.

As one of the Inland Empire's largest Landscape Architecture firms, our Clients have the advantage of speedy project delivery, a high level of customer service, and high-quality deliverables throughout all phases of project development.

KEY PERSONNEL AND RESUMES

ADG will serve as the primary consultant for the project, with President Richard Krumwiede providing contract and team oversight. Gregg Denson, Director of Design, will lead the conceptual processes, while our Project Manager, Ryan Skolny, will provide daily scheduling, project management and be the main point of contact throughout the duration of the project. Key personnel will be available throughout the duration of the project and no key staff will be removed or replaced without the prior written approval of the City. Our subconsultant team will include: Madole & Associates, JCA Engineering, CA Waters, and RGSE.

Prime Consultant Landscape Architecture – Architerra Design Group

President/Founder – Richard Krumwiede ASLA, PLA #2834

Mr. Krumwiede is a hands-on principal, who participates throughout all phases of Architerra projects. He conducts design development and administration on a wide range of projects including community master plan design, public schools, model homes, multi-family, and park projects. He was instrumental in the design, planning and overall project success for the Phil and Nell Soto Park project. He is a past President of the Southern California Chapter of the American Society of Landscape Architects (ASLA). Honors and Awards include numerous awards for Parks and Recreation Design. He was born in Upland, California, and graduated from Cal Poly, Pomona with a Bachelor of Landscape Architecture in 1984. ADG operates under Mr. Krumwiede's California License #2834, and he is also licensed as a landscape architect in Arizona #29115, Oregon #841, New Mexico #538, and Nevada #446.]

Director Of Design – Gregg Denson ASLA, PLA #4302

As Director of Design, Mr. Denson is responsible for overseeing all aspects of project design from inception to completion. His duties would include participation in client contact, design development, and finalization of all formal design exhibits.

Mr. Denson has been involved with the initial Veteran's and Public Safety Plaza concept, as well as designing some of the firm's most challenging projects. The talented design team he heads up works on projects focusing on sustainable design such as open space public gathering areas, retrofits of existing public facilities for resource conservation, specific plan developments for master planned communities, schools, mixed-use

residential developments, trail planning, and open space preserve enhancement projects. He will work with staff to prepare the graphic sketches and sections detailed in the scope of services. Additionally, he will attend team meetings as required to assist in the presentation of our work.

Mr. Denson has a Bachelor of Science in Landscape Architecture from California State Polytechnic University, Pomona, and provides more than 20 years of design experience to the firm. He is currently licensed as a landscape architect in California (#4302). He is also a native plant enthusiast who utilizes his own residence for studying the growth characteristics and water requirements of California native plants.

Project Manager –Ryan Skolny, ASLA PLA #6551

Mr. Skolny began with ADG in 2014, and advanced quickly to his current position because of his ability to manage projects, as well as identify and implement the design and planning process. He earned his Master of Science in Landscape Architecture from Cal Poly Pomona, after his undergraduate studies at State University of New York: College of Environmental Science and Forestry (BA Landscape Architecture), and Keystone College in Pennsylvania (AA Landscape Architecture).

Mr. Skolny is very familiar with preparing bid ready documents for a variety of projects. A recent project of note is, he was the current project manager for Spring Road and Championship Drive, approximately five miles total of medians for the City of Moorpark. He is currently managing the new Atwell community in Banning, consisting of 4,500 homes, 438-acres of open space, and 16 parks totaling 81-acres.

Mr. Skolny was the lead project manager for our project with the City of Compton. This project includes a drought tolerant landscape and irrigation redesign for the renovation/retrofit of approximately 4,100 linear feet of fifteen City maintained medians, as well as renovating their MLK Jr./Cesar Chavez Monument.

Sub-Consultant Team:

Civil Engineer: Madole & Associates, Inc. #36637

Madole & Associates has provided engineering services throughout the Inland Empire for over thirty years, with their office located in Rancho Cucamonga. Madole's professionals plan and engineer communities where families live, play, learn, shop, and work. Their families are raised in the communities they develop, and they are personally vested in contributing to a higher quality of life, with economic and environmental sustainability. Madole's vision of communities incorporates homes, parks, nature preserves, and schools, integrated with commercial development and effective transportation networks.

Project Experience with ADG

- Murrieta Hot Springs Road, Murrieta
- Victoria Gardens HOA, Rancho Cucamonga
- Phil & Nell Soto Park, Pomona
- Rialto Community Garden, Rialto
- Chino Community Garden, Chino
- Lake Gregory Park Splash Pad, Crestline
- Etiwanda Preserve Trail, Rancho Cucamonga

- Silvertip, Stardust, & Longview Parks, Diamond Bar
- Wrightwood Skate Park, Wrightwood
- Sycamore Canyon Park Trail Phase 3 & 4, Diamond Bar

Electrical Engineer: JCA Engineering, Inc. E-11795

JCA Engineering provides efficient innovative architectural lighting design services, and state-of-the-art electrical engineering. JCA is a Certified Small Business Enterprise. Projects successfully completed within the last year represent total construction values exceeding thirty million dollars. Those projects encompassed active and passive recreational sites, sports complexes, arenas, new and renovated educational facilities, efficient public works facilities, religious facilities, and streetscapes for community revitalization. The principals of this growing firm offer more than 65-combined years of experience in electrical systems engineering.

Project Experience with ADG

- Moreno Valley Amphitheater
- Uptown Park Performing Arts Center, Yucaipa
- Spring Valley Lake Entry Monument, Victorville
- Archibald Median & Community Gate Way, Ontario
- Villegas Park, Riverside
- Silvertip Park, Diamond Bar
- Hamilton Park, Pomona
- Phil & Nell Soto Park, Pomona
- LMD Paseo Streetscape Lighting, Rancho Cucamonga
- Fairplex, Pomona
- Home Developer Community Parks for Beazer Homes, DR Horton, Lennar, Tri Pointe, KB Homes, Brookfield, Diversified, Lewis, K. Hovnanian & Pulte.

Water Consultant: California Waters

California Waters, LLC is a full-service commercial aquatic design and engineering firm that provides architectural, conceptual, mechanical, structural, and electrical design services to architects, contractors, municipalities, and public agencies on projects that contain a commercial pool, competition pool, splash pad, water feature and man-made lake. California Waters, LLC is comprised of over ten design professionals that have amassed 75 plus years of collective experience in both the commercial aquatic engineering and construction industries. They specialize in formulating concepts that reflect the design team's vision while staying within the owner's budgeted guidelines.

Project Experience with ADG

- Duarte City Hall Plaza Redesign
- Inland Empire Health Plan (IEHP) Campus, Rancho Cucamonga
- Uptown Park Performing Arts Center, Yucaipa

Structural Engineer: RGSE, Inc. #4595

RGSE, Inc. strives to be a leader in providing value-added engineering services to our clients by creating a successful partnership with them throughout the design and

construction process. Our pledge is to establish lasting relationships with our clients by exceeding their expectations and gaining their trust through exceptional performance by every member of our engineering and design team.

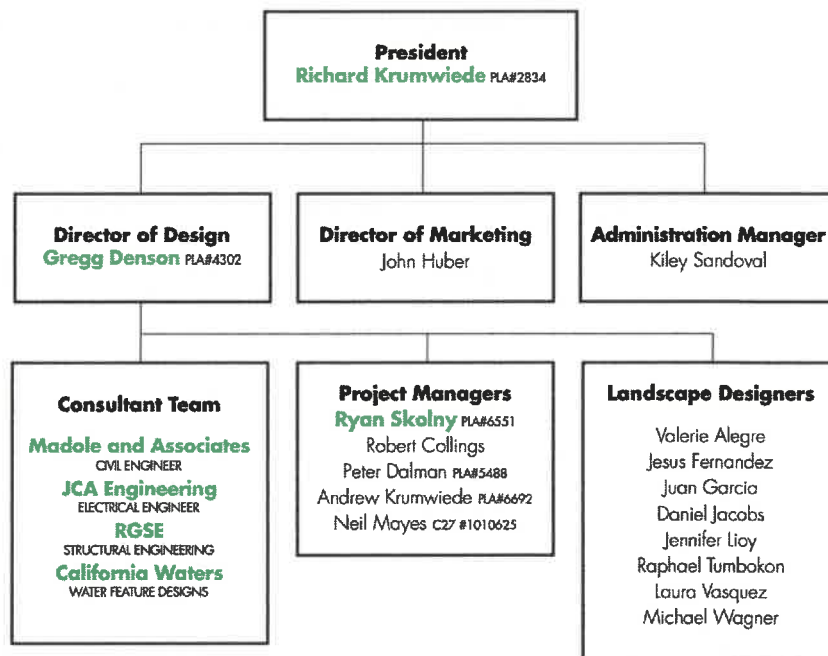
Ramon Garcia established RGSE, Inc. in June 2005. RGSE, Inc. primarily provides structural engineering consulting services to architects as part of a design team for building structures. We also provide services for: diligence reports, structural observations, expert witness, forensic engineering, seismic evaluation of existing buildings, and some heavy concrete civil structural design.

RGSE, Inc. has significant project and engineering experience in commercial, industrial, public, DSA, essential facilities, high-end custom homes, senior housing, multifamily housing, mixed use, seismic retrofits, due diligence reports, fatal flaw analysis, and peer reviews. We have extensive experience with steel, concrete, wood, and masonry, encompassing work on numerous building types including concrete tilt-up, steel moment frames, steel brace frames, light framed wood construction, concrete two-way slabs, one way slab and beams, waffle slabs, pre-cast parking structures, metal stud buildings, panelized roofs, steel joists.

Project Experience with ADG

- Dominguez Park, City of Redondo Beach
- Eagle Vista, French Valley (Pulte Homes)

**ARCHITERRA DESIGN GROUP
ORGANIZATIONAL CHART**



PROJECT EXPERIENCE

ADG has cultivated a reputation for high quality design, professionalism, and success in the design of new and renovated public facilities. Listed below are examples of ADG's relevant projects, and references, which details our experience with similar projects. Graphic examples of our work are included in the Appendix.

Uptown Park Performing Arts Center, Yucaipa

ADG prepared conceptual design and construction documents for the new 20,000 sqft. urban plaza area at Uptown Park. This new urban plaza area serves as a venue for the City's various music festivals and special events.

The design was to be original, creative, artistic, and cohesive within the established design of the new performing arts building. Amenities included: an open-air stage, monument wall, interactive splash pad/water feature synchronized to music (by California Waters), an art plaza, lighting, and electrical infrastructure (by JCA), planting and irrigation, and the installation of a plaza shade structure.

Contact: Paul Toomey, Director of Community Development, City of Yucaipa. (909) 797-2489 ext. 247, 34272 Yucaipa Boulevard, Yucaipa, CA 92399.

La Habra City Hall Redesign

Design development and construction documents for La Habra City Hall. Design included the design of a new entry monument to the campus plus a corner monument with signage, Spanish water fountain, outdoor patio and seating area, overhead trellis structure with trained bougainvillea, pavement repair and replacement, new enhanced concrete paving to include the City logo, ADA accessibility, vehicle access control bollards, a drainage plan as well as planting, irrigation and hardscape.

Contact: Bob Simon President SVA Architects, (949) 809-3380, 6 Hutton Centre Drive, Suite 1150, Santa Ana, CA 92707

Claremont City Hall Redesign

This project consisted of developing conceptual plans, construction documents, specifications and estimates for renovating the existing landscape and irrigation design around City Hall with a new design composed of drought-tolerant water conserving plants, updating the associated irrigation system, and integrating decomposed granite, permeable paving, bio swales, etc.

ADG Team: Richard Krumwiede, Gregg Denson

Contact: Ms. Kristin Mikula, Community & Human Services Manager, City of Claremont (909) 399-5433, 1700 Danbury Road, Claremont, CA 91711.

Shelton Park Performance Stage, Claremont

This project consisted of developing conceptual plans, construction documents, specifications and estimates for renovating the landscape and irrigation design for this existing park, located near Harvard and Bonita Avenues. The new design included a

newly built performance stage for outdoor performance and concerts, drought-tolerant and water conserving plants, and an updated state of the art irrigation system, along with integration of decomposed granite walking path, bio swales, and additional water saving design features.

Contact: Ms. Kristin Mikula, Community & Human Services Manager, City of Claremont (909) 399-5433, 1700 Danbury Road, Claremont, CA 91711.

Downtown Urban Plaza, City of Upland

ADG assisted the City in conducting a public workshop and preparing conceptual design sketches of the pocket park site. ADG formalized the design into a Conceptual Landscape Master Plan and provided Theme and Materials Boards with elevations of key design features, and photo examples of proposed construction details and materials along with plant images of the proposal palette. Amenities include enhanced paving, a performance plaza for gathering, commemorative "1906" bronze inlay, shaded seating areas with picnic tables, entry gateways with signage, and drought tolerant plant palette and irrigation. We are currently in process of preparing construction documents.

Contact: Robert Dalquest, Director Development Services Department, City of Upland, (909) 931-4100, 460 N. Euclid Avenue, Upland, CA 91786

Arrowhead Regional Medical Center, Colton

The County of San Bernardino contracted ADG to design a phased approach conceptual master plan as a part of the redesign and rehabilitation for the Arrowhead Regional Medical Center Campus.

The goals were to create a unified campus landscape design which utilized cost effective landscape, hardscape and softscape solutions that are attractive and resilient, utilizing low maintenance and low water use materials, that would enhance the appearance of the overall campus facility. Landscaped areas included street frontages, courtyards, building frontages and parking lot islands and fingers.

Our scope included the design for the three main areas slated for renovation. ADG prepared and refined the formal master plan including sections, enlargements, and 3D renderings. Upon design approval from the medical center board, ADG then prepared the construction documents for all three areas in the phased approach.

Contact: Monir Abdo, Sr. Project Manager, San Bernardino County Real Estate Services, (909) 387-5000 385 North Arrowhead Avenue, Third Floor, San Bernardino, CA 92415

Inland Empire Health Plan (IEHP), Rancho Cucamonga Campus

The IEHP (Inland Empire Health Plan) Campus covers approximately 51-acres in Rancho Cucamonga CA. The site has two large office buildings with landscaped parking areas and a central landscaped core sitting between the buildings. IEHP wanted to create a unified campus that emphasizes the ideas of health, well-being, personal and social communication, and the ability to disconnect from the traditional office environment. ADG was contracted to design the central 5-acre open space between the buildings to create a dynamic, sinuous landscape.

The design focuses on positive health and well-being, productivity of business meetings, enhancement of practical problem-solving team skills, development of personal and social communication, and the ability to disconnect from the traditional office environment. Amenities include sheltered outdoor meeting space, outdoor learning and development areas, open air amphitheater with seating, water feature, garden scenes, shaded walking and talking paths and casual eating areas.

To contribute to their wellness plan vision, plans include two well defined 'Wellness Walking' loops, a 1-mile-long exterior loop around the perimeter of the site, and a 0.8-mile interior walking loop for employees of all physical abilities.

Contact: Richard Fleig, Project Manager, Inland Empire Health Plan, (951) 335-3930, 10801 Sixth Street, Rancho Cucamonga, CA 91730

Civic Center Amphitheater and Park, Moreno Valley

ADG was contracted by the City to prepare the conceptual design and construction documents as the prime consultant for the 8-acre Civic Center Municipal Amphitheater. Conceptual designs for the outdoor amphitheater include a fully operational public performance stage, terraced seating for 500-600 audience, and an informal sloped lawn area for potential overflow seating. Theater design includes ADA vehicular and pedestrian accessibility along with ADA seating within the theater. Other amenities include an informal lawn play area along with a sloped lawn area for the Annual Moreno Valley Snow Day and Holiday Festival. Our design also includes a "front of house" control booth for theatrical stage lighting, audio, and video production. Backstage accessibility includes production and maintenance vehicle access for production load-ins and strikes.

A primary paseo provides ample room for City events and vendors, while connecting to existing paseos at the Civic Center complex. ADA accessible restroom facilities are included in the design and are readily accessible from the theater seating area. Planting will include a plant palate of native and drought tolerant ornamentals and climate appropriate shade trees.

Contact: Henry Ngo, PE Project Manager, City of Moreno Valley, (951)413-3709, 14075 Frederick Street, Moreno Valley, CA 92553

PUBLIC AGENCY REFERENCES

1. **City of Moorpark (2014-current)**, Jeremy Laurentowski, Parks and Recreation Director, (805) 517-6385, 799 Moorpark Avenue, Moorpark, CA 93021. Email: JLaurentowski@moorparkca.gov

- Tierra Rejada Streetscape Master Plan
- Spring Road Streetscape
- Championship Road Streetscape
- Tierra Rejada Playground Park Improvements
- Walnut Acres Park
- Plan Checking Services

2. **City of Yucaipa (2016-2021)**, Paul Toomey, Director of Community Development, (909) 797-2489 ext. 247, 34272 Yucaipa Boulevard, Yucaipa, CA 92399. Email: ptoomey@yucaipa.org
 - Five Winds Park
 - Uptown Park and Entertainment Venue
 - Wilson III Basin Park
3. **City of Pomona (2011-current)**, Matt Pilarz, Senior Civil Engineer, (909) 620-3652, 505 South Garey Avenue, Pomona, CA 91769. Email: Matt_Pilarz@ci.pomona.ca.us
 - Phil & Nell Soto Nature Park
 - Hamilton Park
4. **City of Claremont (2015-2019)**, Kristin Mikula, Community & Human Services Manager, (909) 399-5433, 1700 Danbury Road, Claremont, CA 91711. Email: kmikula@ci.claremont.ca.us
 - College Park Irrigation Redesign/Retrofit
 - Shelton Park Water-wise Redesign
 - City Hall Campus Water-wise Redesign
 - Padua Park Bio-swale Design
5. **County of San Bernardino Special Districts (2008-current)**, Phil Krause, District Planner, (909) 241-4233, 222 W. Hospitality Lane, 2nd Floor, San Bernardino, CA 92415. Email: phil.krause@sdd.sbcounty.gov
 - Etiwanda Preserve Master Plan
 - Spring Valley Lake Entry Monument
 - Lake Arrowhead Dam Community Park Master Plan
 - Joshua Tree Desert Conservation Area Master Plan

SCOPE OF SERVICES

Our team understands the City is seeking the design development, construction documents and construction administration services for the Veterans and Public Safety Plaza, located at the Beaumont Civic Center, 550 E. 6th Street, Beaumont, CA. The City wishes to renovate the plaza with updated amenities which may include lighting, hardscape, water feature, seat walls, and updated planting and irrigation.

ADG has reviewed the scope of service requirements identified in the RFP. Based on these requirements, ADG, and its team of consultants, agree to provide the following services for the site as indicated below. All plans will be prepared in accordance with ADA guidelines. Subconsultant proposals are included in our separate fee envelope to provide further detail.

TASK 1. Design Development Phase:

1. Project Kick-Off meeting with City to discuss the project goals and schedules.
2. Civil Engineer/Surveyor Services – (Madole and Associates, Inc.)

- a. Perform topographic survey to locate trees, walkways, streetlights, utilities and building features along with the current grades and features at the existing Memorial Plaza from 6th Street and Magnolia to 6th Street and Orange. Establish vertical control from nearby benchmark or GPS data.
 - b. Prepare topographic survey plat in AutoCAD format to illustrate found centerline monuments, right of way for adjacent public streets and survey data with callouts and vertical elevations.
3. Coordination with Civil Engineer on preparation of the topographic survey.
 4. CAD Base Sheet Development @ 1/6-scale, on 24"x36" sheet format utilizing City Approved Title Block, 1 sheet total. CAD Base will show all features listed in conceptual plan, utilizing the new AutoCAD topographic survey information.
 5. Water Feature Schematic Design – (California Waters) Provide one (1) schematic design set of drawings that address fountain footprint, equipment location, piping corridor, filtration system design and overall aesthetic design. (on 24" x 36" sheets).
 6. Water Feature Design Development – (California Waters) Provide one (1) design development set of drawings that address hydraulic requirements, surge tank requirements (if required) and development drawings for the equipment room/below grade vault, pump system and waterproofing of the water feature. (on 24" x 36" sheets). Provide an Engineer's opinion construction cost estimate to construct the water feature.
 7. Coordination with Water Feature consultant on design intent and site constraints.
 8. Review final Design Base Information and Water Feature Schematic and Design Development Plans with City Staff for final approval (one (1) meeting anticipated).
 9. Project Administration (Bi-Weekly Status Report and Project Scheduling).
 10. Telephone Consultation.

TASK 2. Construction Document Phase:

1. Title Sheet Preparation using city title block format (24" x 36" sheet).
2. Demolition Plan showing all proposed removals and items to remain (1 sheet @ 1/6-scale on 24" x 36").
3. Prepare Grading/Drainage Plan utilizing site survey to include detailing high points, finish grades and finish surface elevations for all hardscape, walls, and planter areas (1 sheet @ 1/6-scale on 24" x 36").
4. Prepare Construction Plan to include layout and detailing of hardscape, seat walls, benches, fencing, and other site amenities (1 sheet @ 1/6-scale on 24" x 36").

5. Prepare Construction and Grading Details for all proposed elements, including seat walls, columns, donor brick walls, water features, flagpoles, light post fixtures, existing clock relocation and paving.
6. Design of statuary and memorial elements (plaques, benches, signage, etc.) for incorporation into the plaza by others.
7. Coordination with Structural Engineer Subconsultant (RGSE Structural Engineers) for review of details.
8. Coordination with Electrical Engineer Subconsultant (JCA Engineering, Inc.) for review light pole layout, fixture type with cut sheets and details.
9. Coordination with Water Feature Subconsultant (California Waters) for design layout and construction materials/finishes related to the water features and equipment room/vault location.
10. Site visit to document existing irrigation design (P.O.C., mainline locations/valves/controller) with City of Beaumont Maintenance personnel. In addition, the visit will be utilized to obtain soils sample for agronomic soils analysis by lab.
11. Prepare an Irrigation Modification Plan showing existing and new equipment (1 sheet @ 1/6-scale on 24" x 36").
12. Irrigation Detail Preparation.
13. Prepare Water Efficiency Landscape Worksheet. *
14. Prepare 2 Irrigation Controller Charts. *
15. Prepare a Tree, Shrub, and Ground Cover Planting Plan showing plant additions (1 sheet @ 1/6-scale on 24" x 36").
16. Planting Detail Preparation.
17. Construction, Irrigation, and Planting Specifications.
18. Preparation of final construction quantities and Cost Estimate.
19. Provide Soils Test and Soils Management Report. *
20. City/Agency Progress Meeting. (one virtual).
21. Provide revisions necessary as part of the agency plan check review.
22. Project Administration (Preparation of Bi-Weekly Status Report and Project Scheduling).
23. Telephone Consultation.
24. Water Feature Design and Engineering services will include:

- a. Electrical Design – One (1) set of electrical construction documents (on 24" x 36" sheets).
 - b. Structural Design – One (1) set of structural construction documents (on 24" x 36" sheets).
 - c. Construction Documentation – One (1) set of final construction documents (on 24" x 36" sheets).
 - d. Provide revisions necessary as a part of the Building Department review.
25. Structural Engineering services will include:
- a. Structural review of construction details for relocated historic clock and veterans/first responder flagpoles.
 - b. Stamped engineered drawings and structural calculations for construction details related to the clock and flagpoles.

TASK 3. Electrical Engineering Phase:

1. Design of final power system from existing site service to each new light fixture including electrical controls and all fixture and equipment specifications (on 24" x 36" sheets).
2. Design of new security pole mounted plaza courtyard lighting to meet all building codes presently adopted by the authority having jurisdiction.
3. Design new flagpole and monument exterior up lighting.
4. Design power pedestal with general power outlets to meet Owner's requirements at exterior plaza area for portable audio connection.
5. Design power connection to water features.
6. Coordinate with Owner's security surveillance specialist to determine all requirements. Owner to provide manufacture, model numbers and cut sheets for all new devices/cabling to be installed.
7. Design extension of existing on-site security surveillance system to new camera locations in new plaza area.
8. Design and specification of site electronic surveillance system raceways, cabling, and cameras.
9. Design location of new cameras from redline drawings provided by Client.
10. Provide structural pole base calculations for new plaza light pole base. (one structural calculation included)
11. Provide site lighting photometric illumination point by point drawing for walkways, playground, as required.
12. Provide revisions necessary as a part of the Building Department review.
13. Determining the exact loads for the existing sub-panels. JCA shall provide estimated load from existing circuit breakers in panel of Owner shall hire a

licensed electrician to install a digital load recording meter to record the load on each phase of each sub-panel. Recording meter shall be connected to each panel for a minimum of two weeks and meter shall provide a printed or electronic report.

14. Prepare Site Lighting Photometric Plans for proposed light fixtures within the plaza area.
15. Prepare Outdoor Title 24 Plans for new plaza lighting, if required.

TASK 4. Construction Administration Phase:

1. Pre-construction meeting (1 meeting).
2. Submittal Review.
3. Request for Information (RFI) responses.
4. Construction observation site visits (ADG): drainage/grading (1), hardscape/equipment installation and surfacing layout (3), irrigation layout (1), plant material layout review (1), and final completion/release to maintenance (1). (seven visits total)
5. Preparation of site review reports for submittal to Client for review, and contractor for correction. (seven reports total)
6. Electrical Engineering (JCA Engineering, Inc.) - Construction administration to review site electrical installation (two site visits/reports).
7. Water Feature (California Waters) - Construction administration to review site Water Feature installation (two site visits/reports).
8. Project Administration and Telephone Consultation.

During Project site visits ADG will review the progress of construction and to see of the work completed is generally consistent with the intent of ADG's Construction Documents. Although ADG may observe and identify potential problems, these visits are not construction inspections or a guarantee that there will not be construction deficiencies.

INSURANCE

We can provide the City with the requested insurance limits and accept the revised Professional Services Agreement language modification of Section 8. Indemnification as listed in Addendum No. 1 dated December 9th, 2022.



ARCHITERRA
DESIGN GROUP
LANDSCAPE ARCHITECTURE AND PLANNING

Appendix

Remove your new Pocket Certificate
from the receipt portion and carry
it with you at all times.

LANDSCAPE ARCHITECTS TECHNICAL COMMITTEE
2420 DEL PASO ROAD, SUITE 105
SACRAMENTO, CA 95834
916 575-7230

5/26/22
5/26/22

CUT HERE

CUT HERE



CALIFORNIA ARCHITECTS BOARD
LANDSCAPE ARCHITECTS TECHNICAL COMMITTEE
2420 DEL PASO ROAD, SUITE 105
SACRAMENTO, CA 95834
916 575-7230



CUT HERE

I M P O R T A N T

1. Please include your Certificate Number on any correspondence to this of
2. Notify the Program of any name or address change in writing.
3. Report any loss of this certificate immediately in writing to the Program
4. Please sign and carry the Pocket Certificate with you.
RICHARD W. KRUMWIEDE

CERTIFICATE NO.

Landscape Architect

2834

RICHARD W. KRUMWIEDE
10221-A TRADEMARK ST
RANCHO CUCAMONGA CA 91730

EXPIRATION
07/31/24

Signature

RECEIPT NO.

21440721

CERTIFICATE NO.

2834

EXPIRATION DATE

07/31/24

RECEIPT NO.

21440721

This is your receipt. Please save for your records.

PLALA 10/31/07



ARCHITERRA DESIGN GROUP



EDUCATION

B.S. Landscape Architecture
California State Polytechnic
University, Pomona

MEMBERSHIPS & AFFILIATIONS

Member American Society of
Landscape Architects (ASLA).

Past President ASLA SoCal Chapter

Member Building Industry Association

Sponsor Inland California Chapter
American Institute of Architects(AIA)

California Water Agencies (ACWA)

LANDSCAPE ARCHITECTURE LICENSES

California #2834; Arizona #29115
Nevada #446; Oregon #1841
New Mexico #538

PUBLICATIONS & LECTURES

ACWA Water Conference 2009, 2010
California Trails & Greenways
Conference, 2012, 2014
San Bernardino Water Conference

Sunset Magazine
"A Garden for All Ages" 2007

RICHARD W. KRUMWIEDE

PRESIDENT ARCHITERRA DESIGN GROUP

PROFESSIONAL BACKGROUND

Mr. Krumwiede founded Architerra Design Group in 1991. The firm has operated continuously since that time, and he maintains a fully staffed office in Rancho Cucamonga. He conducts design development and administration on a wide range of projects including: Municipal and Public agency projects, trails and open space planning, water conservation, plan-checking, and city wide streetscape HOA and community master plan design, park design, model homes, custom estates, schools, high density apartment and condominium developments, mid-rise commercial office building design, projects.

For over 30 years, the firm has designed a diverse portfolio of public, private and commercial projects including corporate campuses, district headquarters, civic centers, public parks, master planned communities, model homes, and custom estates. The scope of these projects included hardscape, drought tolerant planting and irrigation design for courtyards, buildings, entry plazas, parking lots, pedestrian access, parks, nature areas, habitat restorations and non-motorized commuter trail systems. A recent project of note was the re-design of the exterior landscape and irrigation systems at the Rancho Cucamonga City Hall. This design incorporated a water wise Mediterranean plant palette, and the latest technology in water conserving irrigation systems. The project included a robust interpretive element highlighting City history, planting strategies and an on-site legacy vineyard. The results are a landscape that serves as a positive model for the community, and one that offers site appropriate educational opportunities.

Mr. Krumwiede believes in education, and regularly mentors young people in landscape architecture and life. He is a proud member of the Association of California Water Agencies (ACWA) and was a featured presenter at their San Diego ('09) and Monterey ('10) Conferences. He was a featured speaker at the 2015 San Bernardino Water Conference, and in the Spring of 2014 and 2016 he presented a lecture on interpretive elements at the California Greenways and Trails Conference.

Civic Center Amphitheater

Moreno Valley, CA

Conceptual design and construction documents as the prime consultant for the 8-acre Civic Center Municipal Amphitheater, including a fully operational public performance stage, terraced seating for 500-600 audience, and an informal sloped lawn area for potential overflow seating.

The Desi (Arnaz) House

Eastvale, CA

Program development, community outreach and a final master plan for the historic 4,400 s.f. Desi House and surrounding 2.5-acre proposed park space. Originally designed by Desi Arnaz ("I Love Lucy")

Inland Empire Health Plan Campus

Rancho Cucamonga, CA

The IEHP (inland Empire Health Plan) Campus covers approximately 51 acres in Rancho Cucamonga CA. The site has two large office buildings with landscaped parking areas and a central landscaped core sitting between the buildings.

City Hall Redesign

Rancho Cucamonga, CA

Relative to decreases in available water, and an increasing awareness of water conservation efforts the City wished to re-design the landscape and irrigation treatments at City Hall to incorporate water wise landscaping and water conserving irrigation.

Landscape Architecture Design On-Call

City of Menifee

City of Moreno Valley

City of Murrieta

City of Pomona

City of Riverside PUC

City of Thousand Oaks

County of Riverside EDA

County of San Bernardino Architects and Engineering

County of San Bernardino Special Districts

Housing Authority of the County of San Bernardino (HACSB)

Los Angeles Unified School District

Mountains Recreation Conservation Authority

Western Municipal Water District

Plan Check and Peer Review On-Call

City of Chino Hills/Plan Checking

City of Chino Plan Checking

City of El Monte Plan Checking

City of San Dimas/Plan Checking

City of West Covina/Plan Checking

City of Wildomar/Plan Checking



ARCHITERRA DESIGN GROUP



EDUCATION

B.S. Landscape Architecture
California State Polytechnic
University, Pomona

LANDSCAPE ARCHITECTURE LICENSE

California #4302

GREGG P. DENSON DIRECTOR OF DESIGN

PROFESSIONAL BACKGROUND

As Director of Design, Mr. Denson is responsible for overseeing all aspects of project design from inception to completion. His duties would include participation in client contact, design development, and finalization of all formal design exhibits.

Mr. Denson has been involved with designing some of the firm's most challenging projects. The talented design team he heads up works on projects focusing on sustainable design such as open space public gathering areas, retrofits of existing public facilities for resource conservation, specific plan developments for master planned communities, schools, mixed-use residential developments, trail planning, and open space preserve enhancement projects.

Mr. Denson will work with staff to prepare the graphic sketches and sections detailed in the scope of services. Additionally, he will attend team meetings as required to assist in the presentation of our work.

Mr. Denson has a Bachelor of Science in Landscape Architecture from California State Polytechnic University, Pomona, and provides more than 20 years of design experience to the firm. He is currently licensed as a landscape architect in California (#4302). He is also a native plant enthusiast who utilizes his own residence for studying the growth characteristics and water requirements of California native plants.

SELECT PROJECT EXPERIENCE

**RANCHO CUCAMONGA
CIVIC CENTER**
Rancho Cucamonga, CA

UPTOWN PARK
Yucaipa, CA

**TIERRA REJADA
STREETSCAPE MASTERPLAN**
Moorpark, CA

ROUTE 66 TRAILHEAD PARK
Rancho Cucamonga, CA

NORTH ETIWANDA PRESERVE
Rancho Cucamonga, CA

DESI HOUSE PARK
Jurupa Community Services District
Eastvale, CA

CELEBRATION PARK
Ontario, CA

PHIL AND NELL SOTO PARK
Pomona, CA



ARCHITERRA DESIGN GROUP



EDUCATION

M.S. Landscape Architecture
California State Polytechnic

University, Pomona
BA Landscape Architecture

State University of New York
AA Landscape Architecture
Keystone College, Pennsylvania

LANDSCAPE ARCHITECTURE LICENSE

California #6551

RYAN SKOLNY MS ASLA PLA#6551
PROJECT MANAGER

PROFESSIONAL BACKGROUND

Mr. Skolny began with ADG in 2014, and advanced quickly to his current position due to his ability to manage projects, as well as identify and implement the design and planning process. He earned his Master of Science in Landscape Architecture from Cal Poly Pomona, after his undergraduate studies at State University of New York: College of Environmental Science and Forestry (BA Landscape Architecture), and Keystone College in Pennsylvania (AA Landscape Architecture).

Mr. Skolny is very familiar with preparing bid ready documents for a variety of projects. A recent project of note is, he was the current project manager for Spring Road and Championship Drive, approximately five miles total of medians for the City of Moorpark. He is currently managing the new Atwell community in Banning, consisting of 4,500 homes, 438-acres of open space, and 16 parks totaling 81-acres.

Mr. Skolny was the lead project manager for our project with the City of Compton. This project includes a drought tolerant landscape and irrigation redesign for the renovation/retrofit of approximately 4,100 linear feet of fifteen City maintained medians, as well as renovating their MLK Jr./Cesar Chavez Monument.

PROJECTS OF NOTE:

Atwell Community Banning
Tri Pointe Homes

Stalder Building, Downtown Riverside
Regional Properties

Tiera Rejada Streetscape
City of Moorpark

Eden Glen
Brookfield Homes

Claremont Library Renovation
City of Claremont

Southern California Edison Nature Park
City of Redondo Beach



Civic Center Amphitheater Park

Moreno Valley, CA

8-acre Civic Center Municipal Amphitheater. Conceptual designs for the outdoor amphitheater include a fully operational public performance stage, terraced seating for 500-600 audience, and an informal sloped lawn area for potential overflow seating.



ARCHITERRA
DESIGN GROUP



Yucaipa Performing Arts Center

Outdoor Entertainment Venue | Yucaipa, CA

ADG prepared an original, creative, artistic, and cohesive conceptual design along with construction documents for the new 20,000 sqft. urban plaza area at Uptown Park. This new urban plaza area will serve as an entertainment venue for the City's various music festivals and special events. The design is cohesive and complimentary to the design of the new performing arts building and includes an open air stage, monument wall, and water feature synchronized to music, art plaza, lighting and electrical infrastructure, planting and irrigation, and a shade structure. Additional phased features may include: sculptures or art pieces for the art plaza and other shade canopy structures.



ARCHITERRA
DESIGN GROUP



Claremont City Hall

Drought Tolerant Landscape Design and Retrofit

Landscape and Hardscape Design Features:

- Demonstration Garden
- Drought Tolerant Xeriscape
- Sustainable Irrigation Plan
- Bio Swale
- Decomposed Granite



ARCHITERRA
DESIGN GROUP



Shelton Park Performance Stage

Arts and Community Space | Claremont, CA

ADG developed plans, specifications and cost estimates for the renovation of the existing landscape and irrigation design at Shelton Park, composed of drought-tolerant water conserving plants, updating the irrigation, and integrating decomposed granite and mulch. This existing pocket park near City Hall includes an outdoor stage serving as a community gathering and performance space.



ARCHITERRA
DESIGN GROUP

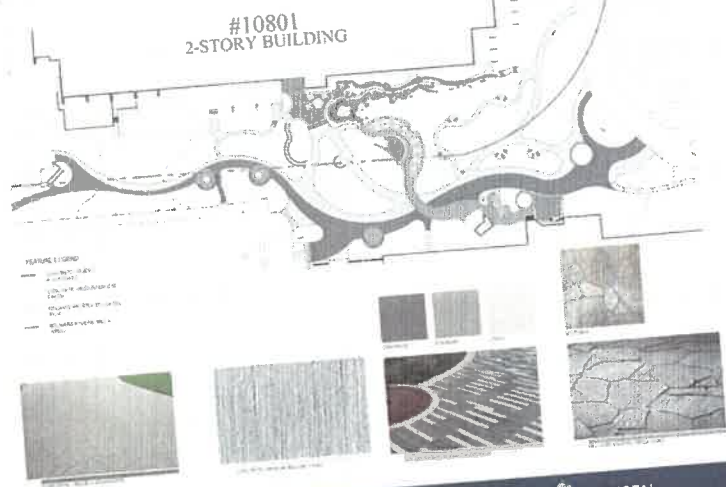
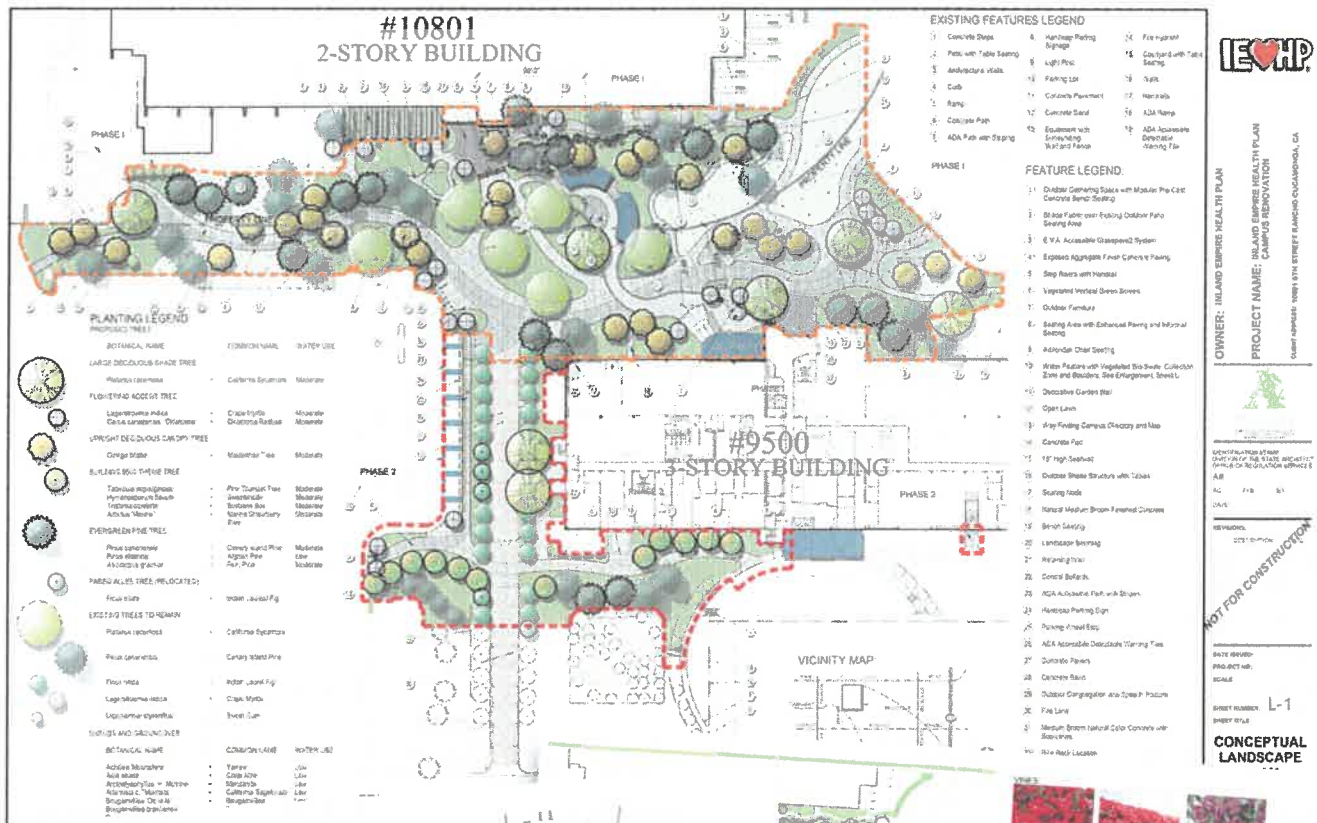


IEHP Comprehensive Campus Landscape Design

The IEHP (inland Empire Health Plan) Campus covers approximately 51 acres in Rancho Cucamonga CA. The site has two large office buildings with landscaped parking areas and a central landscaped core sitting between the buildings. IEHP now owns both buildings and desired to create a unified campus that emphasizes the ideas of health, well-being, personal and social communication and the ability to disconnect from the traditional office environment. Architerra's role was to renovate the central 5-acre core space and create a dynamic, sinuous landscape.



ARCHITERRA
DESIGN GROUP



Conceptual Landscape – Paving Materials and Textures

JENSEN PARTNERS SVA ARCHITECTS

and Entries Planting

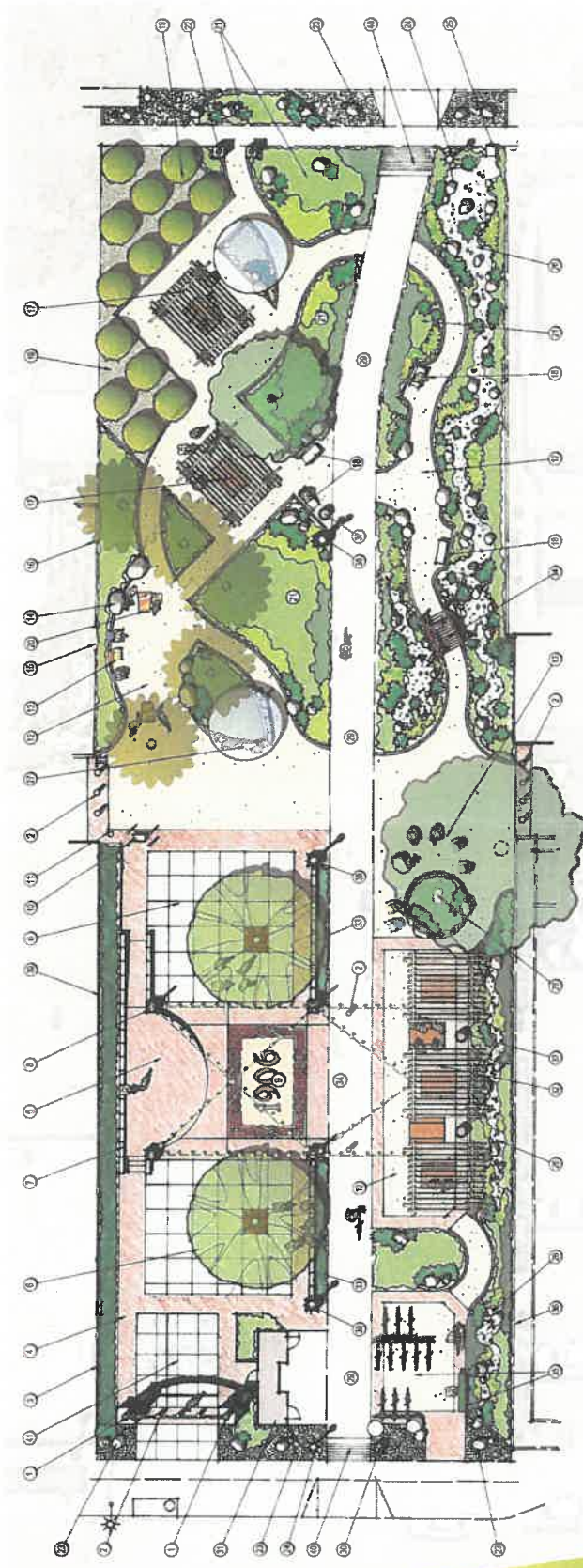
JENSEN PARTNERS SVA ARCHITECTS

IEHP Comprehensive Campus Landscape Design

The IEHP (inland Empire Health Plan) Campus covers approximately 51 acres in Rancho Cucamonga CA. The site has two large office buildings with landscaped parking areas and a central landscaped core sitting between the buildings. IEHP now owns both buildings and desired to create a unified campus that emphasizes the ideas of health, well-being, personal and social communication and the ability to disconnect from the traditional office environment. Architerra's role was to renovate the central 5-acre core space and create a dynamic, sinuous landscape.



ARCHITERRA DESIGN GROUP



FEATURE LEGEND:

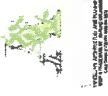
- 1 Primary Entry Plaza with Entry Arched Gateway Entrance and Stone Veneered Columns
- 2 Entry / Traffic Control Island
- 3 Existing Building Wall
- 4 Colored Concrete Paving
- 5 Retain Concrete Platform Stage for Performances
- 6 Performance Plaza for Cultural with Large Shade Tree and ADA Compliant Tree Grate
- 7 Low Wall with Stone Veneering and Concrete Cap at Stage
- 8 Column Platform with Steel Post for Track Lights Support and Connection
- 9 Concrete Veneer Plaza with Cornerstone "Walls" Retain Wall and Structures / Stage Brick Banding
- 10 Existing Transformer and Substation to Retain
- 11 Existing Power Pole to Retain
- 12 Stabilized Decomposed Granite Paving with Concrete Curb Edge
- 13 Shaded Pavement Seating Area with Adirondack Chair Seating
- 14 Landscape Recessed / Permeated "Wells" for Stormwater Sealing
- 15 Existing Plaza Veneer Access Gate to Retain
- 16 Existing Stone Veneered Block Wall to Retain
- 17 Covered Seating Area with Photo Table and Trash Receptacle
- 18 Bench Seating Area
- 19 Glass Linear Grove as Angular Glass Much Permeable Paving with "Living" Tree Ceiling
- 20 Concrete Seating Area with Concrete Paving
- 21 Plant "Screen" / Mobile Planting with Landscape Benches
- 22 Existing Entry Gallery Column with Signage and Linear Paving
- 23 Concrete Cobble Paving with Landscape "Walls" Retain Wall and Structures / Stage Brick Banding
- 24 Light Pole Standard Plaza to Retain
- 25 Existing Stone Veneered Plaza to Retain
- 26 Dry Stone / "Trash Container" with Cobble Stones, Landscape Benches and Mobile Plaza for Storm Water Utilization
- 27 Stone Veneered Seating with Concrete Cap
- 28 Existing Utility (Pegboard) Seating to Retain
- 29 Existing Neutral Pacific Electric Blue Trail to Retain
- 30 Existing Concrete Trail Indicator with Directional Paving to Retain
- 31 Existing Reception Building with Drinking Fountains to Retain
- 32 Cast-in-place Concrete Slabs Structure (3'7" deep) with Photo Table Seating Benches
- 33 Low Wall / Barrier Wall with Stone Veneer and Concrete Cap

PLANT PALETTE:

- TREES**
- STARTING OAK TO REMAIN
 - Quercus agrifolia
 - EXISTING PINE TREES TO REMAIN
 - Pinus ponderosa
 - LEMON TREE
 - 'Sunko'
 - Improved Mayra Lemon
 - Poncirus
 - PLAZA SHADE TREES
 - Magnolia & 'Santal Summer'
 - Sequoia sempervirens
 - EVERGREEN SHADE CANOPY TREE
 - Quercus agrifolia
 - FLOWERING ACCENT TREE
 - Cercis canadensis
 - Western Red Bud
- LEMON GROVE TREES**
- Coast Live Oak
- SEMI-SUMMER MAGNOLIA**
- Coast Live Oak
- WESTERN RED BUD**
- Western Red Bud

- SHRUBS AND GROUNDCOVER**
- BACKGROUND**
- Adiantum species 'Compact'
 - Artemisia 'Twin Peak'
 - Bush Azalea
 - Carolee 'Suzanne'
 - Colorado Blue Spruce
 - Flowering Quince
 - River Birch
 - Yucca
- MIDGROUND**
- Lavender 'Provence'
 - Yucca 'Lillooie'
 - Juniper 'Palmer'
 - Yucca 'Blue Chip'
- FOREGROUND**
- Artemisia 'Nanostylis'
 - Carex 'Lambino'
 - Drumstick 'T. Roy'
 - Salvia 'Sage Blue'
 - Syringa 'Marianne'
 - Yucca 'Blue Chip'

CITY OF UPLAND
UPLAND DOWNTOWN URBAN PLAZA - PRELIMINARY CONCEPTUAL SKETCH
 UPLAND, CALIFORNIA



SCALE: 1" = 30'
 DATE: MAY 2021

Creativity. Service. Environment.



ARCHITERRA
DESIGN GROUP
SINCE 1991

ARCHITERRADESIGNGROUP.COM
10221-A TRADEMARK STREET RANCHO CUCAMONGA CA 91730 | PHONE (909)484-2800 FAX (909)484-2802
CA #2834, AZ #29115, NV #446, OR#841, NM, #538