



December 16, 2025

Dustin Christensen, P.E.
Principal Engineer
City of Beaumont
Public Works Department
550 E. 6th Street
Beaumont, CA 92223
dchristensen@beaumontca.gov

Subject: Task Proposal, Scope and Fee for Pennsylvania Avenue and 2nd Street Traffic Signal Plan

Dear Mr. Christensen,

STC is pleased to provide the City of Beaumont with the following task proposal to prepare Plans, Specifications, and Estimates (PS&E) for a new traffic signal at Pennsylvania Avenue and 2nd Street.

Pennsylvania Ave and 2nd Street is a “T” intersection with the east leg of 2nd Street recently constructed in November 2025 and forming the leg of the “T” to serve development. The intersection is currently one-way stop controlled on 2nd Street and STC is performing a warrant analysis for the new traffic signal which will be completed in January 2026. The new traffic signal will provide safe and efficient access through the intersection for pedestrians and motorists. The City provided a scope request for design services which is attached to this proposal. The following proposal summarizes our scope of work, deliverables, schedule, and fee.

Task 1. Project Management, Meetings, and Utility Coordination

STC’s Project Manager, Myles Baidy, PE, TE will coordinate the day-to-day activities for the duration of the project and serve as the primary point of contact for the City. Following Notice to Proceed, Mr. Baidy will schedule a project kick-off meeting with City staff to discuss the project objectives, schedule, and scope. Mr. Baidy will maintain regular communication with the City’s project manager throughout the course of the project. Any issues encountered will be communicated to the City’s project manager in a timely manner with details on potential impacts and plan of action to resolve.

Task 1 Deliverables:

- *Meeting Agenda and Minutes.*
- *Project Schedule and Updates.*

Task 2. Field Survey, Field Reviews, Utility Coordination, and Base Map Preparation

STC will engage Calvada Surveying, Inc for horizontal and vertical topographic surveys (proposal attached). The survey will identify:

- Right-of-Way, monuments, centerline, benchmark, and control points.
- Surface utility structures including SCE overhead electrical wires that may conflict with proposed traffic signal and/ safety light mast arms.



- Contours and spot elevations at appropriate intervals and shots at locations including street features and notable conditions (EP, SW, gutter, signing and striping, joints, PCR, etc.).



STC will also engage Capuzzi Consulting to prepare the utility base map and design for civil improvements (proposal attached). Capuzzi will coordinate with the local utility companies to obtain utility base maps and record drawings. STC will request the City's current utility contact list and any available record drawings from the City for inclusion in the base mapping effort. The utility data and as-builts will be compared with field survey results and the information incorporated into the project base drawings. STC will share any utility as-builts received with the City.



The team will conduct a detailed field review with the base plans and as-built information to verify the location of existing utilities to the greatest extent possible. Field notes and photographs will be collected to document any discrepancies between record drawings and existing field conditions. This information will be reconciled with the topographic base map to ensure the development of a comprehensive and accurate foundation for the improvement plans.

Task 2 Deliverables:

- Survey CAD files in AutoCAD and PDF Format including surface files.
- Field review photos and notes.
- Utility as-builts.
- Base map.



Task 3. Preliminary Engineering (30% Design)



STC is preparing the traffic signal warrant analysis for the traffic signal and will use the data gathered to inform the traffic signal design including signal phasing and timing. STC will also review traffic analysis reports that include Pennsylvania Ave/ 2nd Street to account for future traffic growth.

The STC team will develop a Basis of Design (BOD) document that will evaluate the optimal location of the traffic signal equipment, left turn storage lengths, signal phasing, existing deficiencies including underground and above ground utility conflicts, right-of-way constraints, and ADA compliance issues. The BOD will show new striping, pedestrian ramp and crosswalk locations, street lighting, signal equipment types and locations of controllers and cabinets, power, and detection systems.

Included in the BOD will be 30% Preliminary Plans showing options for traffic signal pole placement locations and roadway striping reconfiguration. Both the preliminary plan and BOD memo will show and discuss any existing deficiencies, utility conflicts, right-of-way constraints, ADA compliance issues, traffic signal phasing, sidewalk and pavement repair, and other proposed civil improvements with anticipated costs. The result of the BOD will be an accepted preferred design for the traffic signal and associated civil improvements.



The team will work with the City to coordinate with utility companies following the first plan submittal to begin utility conflict checks. The team will identify the location of utilities found to conflict with proposed improvements and modify the proposed improvements to not affect existing utilities.





Task 3 Deliverables:

- Basis of design tech memo.
- Traffic analysis.
- Preliminary engineering drawings.
- 30% cost estimates.

Task 4. Engineering Design (60%, 95%, and Final PS&E)

The STC Team will develop detailed design plans for the improvements identified and approved by the City in Task 3. The design plans will be developed using AutoCAD following City of Beaumont and other applicable design standards.

The design plan set will include a title sheet, general notes sheet, and detail sheets as necessary to accomplish each element of the design. Plans will be submitted at the 60%, 95% and 100%/ final level of completeness for City review. The scope of work assumes one round of comment review for each submittal. The following list summarizes the plans that will be included in the design set:

- Demolition plan.
- Civil improvement plans and intersection detail sheet (including ADA curb ramps, sidewalk improvements, pavement repair, and curb modifications).
- Erosion control plan and detail sheet.
- Signing and striping plans.
- Traffic Signal Plans (including street light modification and traffic signal interconnect).

The team will provide an itemized engineer's estimate of probable cost at 60%, 95% and final levels of design for all proposed improvements carried through to the final design stage of the project. Cost estimate details (items and descriptions) will be consistent with bid items and specification sections. The team will prepare project specifications at the 95% and final design submittals utilizing the City's current boilerplate bid package, special provisions, Caltrans specifications, City standards, and the latest edition of the Greenbook for Public Works Construction. The bid package will be prepared via Microsoft Word and remain in the City's boilerplate font and format.

STC will also provide traffic signal timing plans submitted at the 95% and final design submittals. These will be prepared in the controller programming format. These will be developed based on the traffic analysis, traffic signal and project designs, and comply with CAMUTCD standards for clearance times and standard of practice for other timing settings.

STC is also providing an optional task for potholing for the large traffic signal poles (three for this intersection). STC will attend the potholing exploration to locate the potholes and observe the conditions. The SCE power pole and overhead wires on the west side of the intersection may conflict. There may also be underground communication lines and other utilities that present conflicts. The team will coordinate with the utility company for utility relocation if any are determined to conflict with the new traffic signals. The team will work with the City to prepare final utility notices and submit approved plans to the utility companies within the project limits.





Task 4. Deliverables :

- 60%, 95%, and final design plans in PDF format.
- 60%, 95% and final cost estimates in MS Excel/PDF format.
- 95% and final technical specifications in MS Word/PDF format.
- 95% and final traffic signal timing plans in controller program format. .
- Pothole map and three large mast arm poles potholed and pothole report (60% design).
- Utility conflict matrix, maps, and notifications (60% design).

Task 5. Bid and Construction Support

STC will provide support during advertising including response to Requests for Information (RFI), prepare addenda, and answer questions from City staff and/or the bidders. STC will provide construction support including: pre-con meeting attendance, RFI and submittal review and prepare design changes. At the completion of construction, STC will receive the contractor’s as-built markups and incorporate into a record drawing set. The record drawing set will be approved and sealed by the engineer of record.

Fee and Schedule

STC’s cost proposal by teaming partner for the tasks listed is provided below. There is no mark-up for subs. Our total, not-to-exceed fee estimate is \$101,925 with potholing and \$81, 925 without potholing and is based on our teaming partner costs and recent experience performing similar projects. The final schedule of submittals will be developed based on discussions with the City.

Team	Description	Fee
Calvada Surveying	Survey Engineering	\$6,950
Capuzzi Consulting	Civil Engineering	\$29,975
STC Traffic	Traffic Engineering and Project Management	\$45,000
Pothole Consultant	Optional (to be determined)	\$20,000
Total Fee (no potholing)		\$81,925
Total Fee (potholing included)		\$101,925

We look forward to supporting the City of Beaumont with this important project. If you have any questions regarding our proposal, please contact me at jason.stack@stctrffic.com or 714-315-4640.

Sincerely,

Jason Stack, TE, PTOE
President/ Principal-in-Charge

Attachments

SCOPE: New Traffic Signal Design – Pennsylvania Avenue and 2nd Street

This is a brand new “T” intersection that just opened in November 2025. Currently there is just a stop sign on 2nd Street.

Scope is for a detailed design for new 3-way traffic signal at the intersection of Penn Avenue and 2nd Street to improve traffic circulation, congestion, and pedestrian safety.

Scope should include the following:

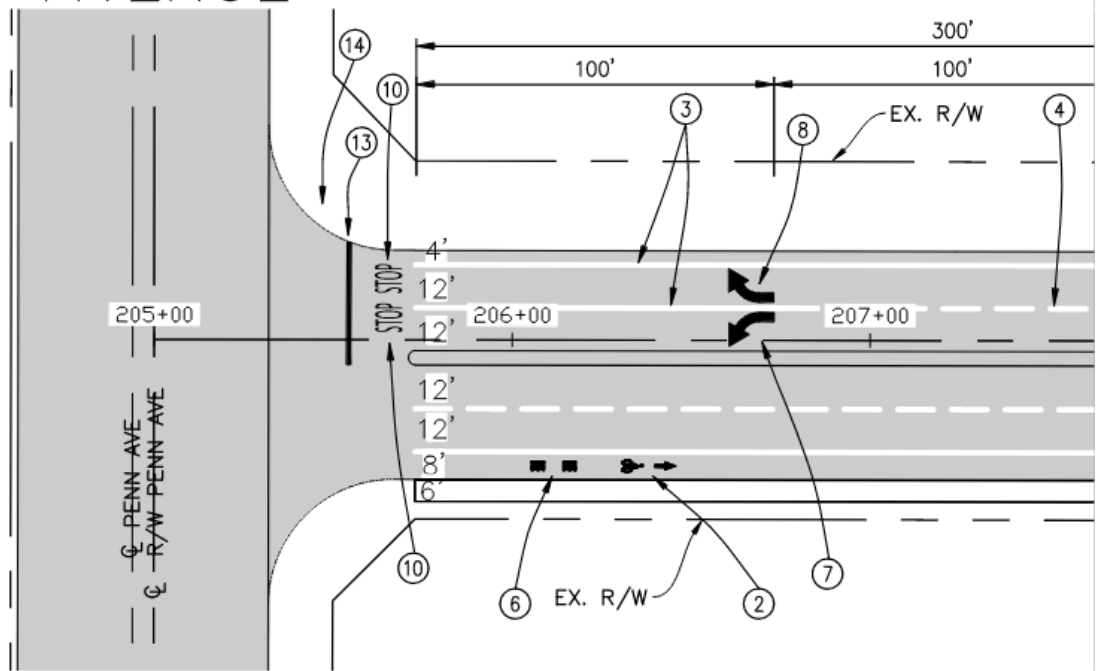
- Design of new traffic signal poles, mast arms, signal lights, street lights, and all associated equipment.
- Survey of intersection and identification of all existing utilities.
- Design of new traffic signal controller, including programming and timing study
- Design of new pedestrian crossing equipment.
- Design of new battery back-up for service panel and signal controller
- Coordination with Edison for Service Plan to provide power for new service panel. SCE coordination will also include any power poles or overhead lines that need to be relocated to accommodate the new traffic signals.
- Utility coordination/relocation for communication lines and underground utilities affected by the work.
- Civil design for any required sidewalk and pavement repair, and ADA curb ramps.
- Striping and signage plans for crosswalks, lane re-striping.
- Complete Bid Documents including design plans and specifications.
- Bid Assistance
- Construction Support (Submittal & RFI review)

City Standard Signal Light Equipment:

1. Controllers – 2070LX ATC controller with OMNI software
2. Controller Cabinets - 352i ATC cabinets
3. Conflict Monitor Unit (CMU) – 210EVlip and CMUip-2212
4. Pedestrian Detection – Accessible Pedestrian Signal (APS) System, Polara iDS/iNS system
5. Battery Back-up System (BBS) – Ethernet compatible in a separate external cabinet
6. Emergency Vehicle Preemption (EVP) System – Opticom 762, ethernet compatible
7. GPS Time Sources – Swarco McCain Stand-alone unit
8. Cellular Radios – Microhard Bullet IPn4Gb – 4G LTE Cellular Ethernet & Serial Gateway
9. Ethernet Switches – DYMEC Model KY-3170 XM



PENNSYLVANIA AVENUE



PROPOSAL FOR PROFESSIONAL SURVEYING SERVICES

TOPOGRAPHIC SURVEY

Pennsylvania/ 2nd Street Traffic Signal Design
Pennsylvania/ 2nd Street, Beaumont, CA 92223
July 3, 2025 (P252503)
PREPARED BY
Saul Melgarejo, PLS

CAL VADA
SURVEYING, INC.

Quality • Experience • Trust



PREPARED FOR

Jason Stack
STC Traffic, Inc.

5973 Avenida Encinas, Suite 218
Carlsbad, CA, 92008
Cell: 714-315-4640
jason.stack@stctrffic.com



INTRODUCTION

Dear Mr. Jason Stack,

CAL VADA Surveying, Inc. (CAL VADA) is a certified DVBE, MBE & SBE company established in 1989 with extensive experience providing land surveying services for projects ranging from small retail and office properties to large commercial developments. Our service philosophy is to provide our clients the most efficient and highest quality service, never sacrificing quality for timeliness. We are fully committed to making your project a success.

Should you have any questions on the attached proposal or need additional information, please contact me at (951) 280-9960. If this proposal is acceptable, please indicate by signing the terms at the end and return a copy to my attention by email or fax at (951) 280-9746 and we will begin work immediately. Our goal is to establish a great working relationship with you for this project, so that you have a surveying firm that you can count on in the future.

Thank you again for your consideration and we would welcome the opportunity to work with you on this project!

I SCOPE OF SERVICES

Topographic Survey

An A.D.A. design level Topographic Survey (conventional field survey) will be provided for the area as outlined in the aerial picture shown on Exhibit "A" (the Site). The boundary component of the survey will include a field boundary verification denoting current property lines and easements of record as shown on current county recorded maps. A current title report is to be provided by the client if easements on private properties are to be shown or if there are any discrepancies with the ROW lines. The items to be included are as follows:

Survey Control

1. The vertical control will be based on the North American Vertical Datum of 1988 (NAVD 88). A local municipal benchmark will be used, if available. Confirmation of the vertical datum will be required before field mobilization.
2. The horizontal control will be based on the California State Plane Coordinate System of 1983 (NAD 83). Confirmation of the horizontal datum/EPOCH will be required before field mobilization.

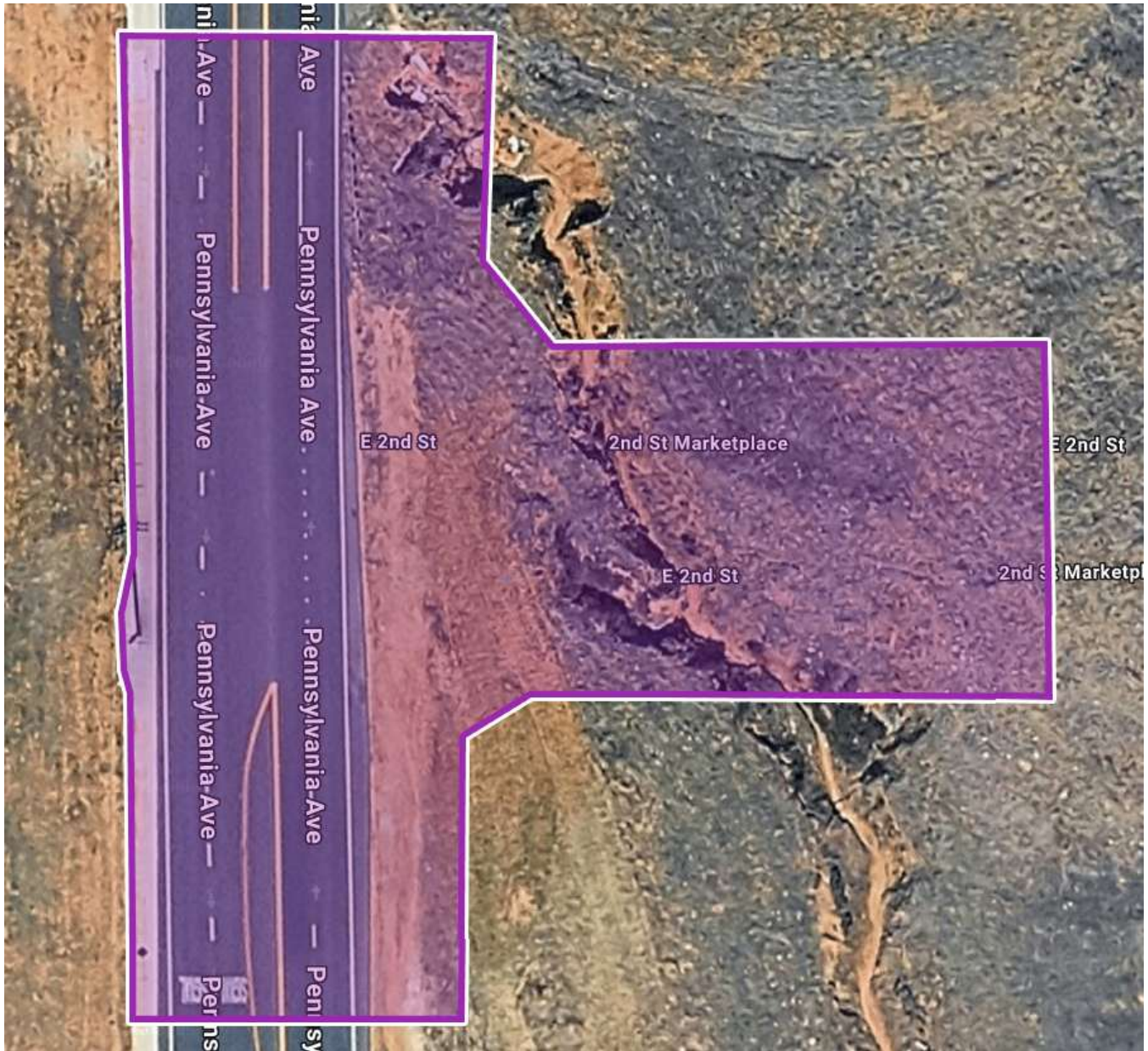
Survey Features

3. Survey observations will be taken on a 10'x10' grid within the ADA parking stalls, accessible routes and sidewalks. Areas where the survey extends past the A.D.A. areas may be on a 25'x25' grid to create 1-foot contour intervals. In addition, we will survey spot elevations at back of walk/sidewalks, top of curbs, flow lines, gutter edges, road access street crowns, high/low points, grade breaks, finish floors, driveway aprons and handicap ramps and concrete expansion joints.
4. Location of signing and striping within the Site.

Utilities

5. Location, elevation, size, and type of visible above ground utilities within the Site.
6. Flow line invert elevations and sizes of drain inlets, sanitary sewer and storm drain manholes within the Site, unless bolted down.
7. Existing utility lines identified by painted striping from USA markings will be surveyed. The research and plotting of record subsurface utilities and hiring a utility locating subcontractor are not included in this proposal.

EXHIBIT "A"





II DELIVERABLES

1. AutoCAD (Civil 3D) drawing, version 2024 or lower, including 3D surface file(s).
2. Signed and stamped PDF file.

III FEE

Pricing includes all labor (both field and office), materials, equipment, research & deliverables.

Task	Amount
Topographic Survey	\$6,950.00

The above-mentioned total fee is based on prevailing wage rates. If the prime consultant requires CAL VADA to work overtime on this project to meet a required deadline, CAL VADA will bill the prime consultant any overtime or double time that our field crews incur based on prevailing wage rates calculated for each individual field crew. This will represent an additional charge beyond the fixed fee pricing above. CAL VADA will obtain permission from the prime consultant before working any overtime in the field.

IV SCHEDULE

We will be available to mobilize to the field 72 hours after submitting the Division of Apprenticeship Standards (DAS) forms. The delivery of the Topographic Survey will be 12-15 business days after the final survey day, following receipt of written notice to proceed/PO and receipt of a current title report; subject to weather or other factors beyond our control. Prior to opening the project and scheduling the field work, CAL VADA needs to be provided the following three items: (i) fully executed contract, (ii) client's 10-digit DIR Registration Number, (iii) 11-digit Project DIR Number.

V ADDITIONAL SERVICES AND ASSUMPTIONS

Should changes to the Scope of Services or any additional services be required after commencement of the project work, an Agreement for changes in pricing, if any, will be reached for the additional services. The project assumptions are as follows:

1. A current title report of the subject property will be provided by the client, if applicable.
2. Hiring a subsurface utility locating company is excluded from this quote.
3. The site will be accessible and clear of obstructions at the requested time of survey. If coordination of site access is required prior to the survey being performed, the client will provide the necessary information. The survey will take place during normal business hours.
4. Lot Tie Agreement and Lot Line Adjustment efforts are excluded from this quote.
5. Legal description(s) and exhibit(s) for dedications/easements are excluded from this quote.
6. The above-mentioned fee is based upon prevailing wage rates.
7. Sufficient survey monumentation will exist at the controlling major intersections and key locations of the underlying record maps. In the event that monumentation is incomplete or deficient, an additional expanded scope may be required. If this should occur, we will discuss our findings in detail with the client and a fee adjustment to this agreement will be required.
8. A Record of Survey is not included in the Scope of Services. We are required to file a Record of Survey if, in performing the boundary survey, material discrepancies are found between measured field data versus historical documents and maps or if any of the boundary lines being established are not shown on any previously recorded Subdivision Map, Official Map, or Record of Survey. A copy of the relevant sections of the Professional Land Surveyors' Act detailing these requirements will be provided at the client's request. The preparation and filing of a Record of Survey shall be billed and paid for as "Additional Services".

VI TERMS AND CONDITIONS

It is understood and agreed between the parties that the total fee as described herein is for the scope of services as set forth herein. If unforeseen field conditions exist, assumptions of this proposal are not met or additional services are requested by **STC Traffic, Inc.** (Client), the scope of the additional services and a lump sum fee will be determined and a change order will be prepared and sent to Client describing the scope and fees of the additional services requested. Work on the additional services will not commence until written authorization to proceed is received via standard mail, facsimile or e-mail.

The Client agrees to pay Cal Vada Surveying, Inc. (Consultant) compensation for services performed on a fixed fee basis, except as noted. The fees quoted herein will be used as a guide in determining the percentage of work completed by the Consultant, where applicable. Progress billings will be made towards the end of each month for services performed during that period. All bills are due and payable within thirty (30) days of receipt of invoice.

Payment of invoice is not subject to nor can payment be withheld based upon the closing date of the sale or transaction of the land surveyed. If Client fails to pay Consultant within thirty (30) days after invoices are rendered, Consultant shall have the right, at its sole discretion, to consider such default of payment a material breach of this entire agreement and, upon written notice, Consultant's duties, obligations and responsibilities under this agreement may be suspended or terminated. In such event, Client shall promptly pay Consultant for all outstanding fees and charges due at the time of suspension or termination. If Consultant elects to suspend or terminate services pursuant to this provision, Consultant is entitled to reasonable suspension or termination costs or expenses.

Client may terminate this agreement at any time, understanding that billing may have been incurred and it will be invoiced hourly per our current schedule of rates, enclosed.

Client agrees that all billings from Consultant to Client are correct and binding on Client unless Client, within ten (10) days from the date of receipt of such billing, notifies Consultant in writing of alleged inaccuracies, discrepancies, or errors in billing.

Client agrees to pay a monthly late payment charge, which will be the lesser of one and one-half percent (1.5%) per month or a monthly charge not to exceed the maximum legal rate, which will be applied to any unpaid balance commencing thirty (30) days after date of the billing.

In the event of any litigation arising from or related to the services provided or Consultant institutes litigation to enforce non-payment under this agreement, the prevailing party will be entitled to recovery of all reasonable costs incurred, including staff time, court costs, attorneys' fees, experts' fees and other related expenses.

The scope of services noted in this proposal shall not be superseded by subsequent documents.


The forgoing proposal is valid for one (1) month from the date of this letter. We reserve the right to review costs at the end of one month and negotiate possible fee changes. Agreement is governed by the laws of the State of California.

VII ACCEPTANCE

To start the process, you are required to sign in the provided space and/or provide a purchase order number. Once signed, this proposal will be set into motion by Calvada Surveying, Inc. It is advised to discuss with the appointed representative before this proposal is signed and made official.

Calvada Surveying, Inc:

Representative: Saul Melgarejo Jr., PLS, Project Manager (saul@calvada.com)

Signature:  Date: December 16, 2025

STC Traffic, Inc.:

Representative: Jason Stack

Signature: _____ Date: _____

December 15, 2005

Jason Stack, T.E., PTOE
STC Traffic
5973 Avenida Encinas, Suite 218
Carlsbad, California

RE: New Traffic Signal Design – Beaumont, CA

Dear Jason,

Capuzzi Consulting Group, Inc. (“Capuzzi Consulting”) is pleased to submit this proposal to the STC Traffic to perform professional civil engineering design services for the new traffic signal proposed at the intersection of Pennsylvania Avenue and 2nd Street in Beaumont, CA (the “Project”). The following proposal identifies our project understanding, proposed scope of work, and cost proposal.

Project Understanding

Capuzzi Consulting understands that the main goal of the Project is to construct a new traffic signal at the intersection of Pennsylvania Avenue and 2nd Street to improve traffic circulation, congestion, and pedestrian safety. Capuzzi Consulting will be a subconsultant to STC Traffic for this project. Our scope will include utility coordination and civil engineering design for the sidewalks and curb ramps.

Scope of Services

Based on the above project understanding, the following describes our proposed scope of services for the Project.

TASK 1 – PROJECT MANAGEMENT, MEETINGS AND SITE VISITS

Capuzzi Consulting will perform project management related services for the duration of this contract. This scope assumes a contract duration of four (4) months. Project management includes contract administration, invoicing, progress reporting, and correspondence via email and phone with STC Traffic staff.

Capuzzi Consulting will attend up to four (4) virtual meetings. It is assumed that these meetings will be 30 minutes in duration and include two (2) Capuzzi Consulting staff.

TASK 2 – UTILITY COORDINATION

Capuzzi Consulting will obtain as-built drawings from the City of Beaumont and Beaumont-Cherry Valley Water District; and request utility maps from the franchise

utility companies (SoCalGas, SCE, Verizon, etc.) operating in the vicinity of the project. These will be utilized to create an existing utility AutoCAD base file.

Upon completion of the Preliminary Engineering Plans, Capuzzi Consulting will prepare a utility conflict matrix to track potential utility conflicts. As part of the 60% design, Capuzzi Consulting will seek to minimize and avoid utility conflicts. The utility conflict matrix is intended to be a living document that will be submitted with each major PS&E milestone.

Capuzzi Consulting will prepare a pothole map for use by the potholing subconsultant.

The Capuzzi Consulting team will determine which utilities are in conflict with the proposed improvements, prepare utility conflict maps, coordinate utility relocation plans with the various utility owners, prepare Notice to Owner.

A total of thirty-two (32) hours has been budgeted for this task. Any additional effort will be considered as Additional Services.

TASK 3 – PS&E

Capuzzi Consulting will prepare plans for the proposed improvements. The plans will be at 1" = 20' scale and are anticipated to consist of the following plan sheets:

- Demolition Plan (1 sheet)
- Improvement Plan and Intersection Detail Sheet (1 sheet)
- Erosion Control Plan and Detail Sheet (1 sheets)

Capuzzi Consulting will prepare an engineer's opinion of probable construction costs for items within our scope of work and submit with the 95% and final submittals.

Capuzzi Consulting will prepare technical specifications using "Greenbook" format. The technical specifications will be for items within our scope of work and will be submitted with the 95% and final submittals.

Capuzzi Consulting will prepare one (1) Checklist for Identifying Projects Requiring a Project-Specific WQMP. This scope assumes that the Project will not require a Project-Specific WQMP. It is anticipated that the Project will require incorporation of Site Design and Source Control BMPs. These will be incorporated into the specifications and/or as notes on the plans.

TASK 4 – Bid and Construction Period Services

Capuzzi Consulting will provide design support during the bid phase. Support services will include responding to Bidder's RFIs, preparing revised PS&E documents for Addenda, and the development of conformed plans and specifications.

Capuzzi Consulting will provide design support during construction. We will respond to Contractor RFIs, review submittals, and prepare Construction Changes.

Capuzzi Consulting will develop as-built drawings based on plan markups provided by the City and Contractor. The Capuzzi Consulting team will as-built drawings once revisions are incorporated. A Total of twelve (12) hours have been budgeted for this task. Additional effort will be considered as additional services.

Additional Services

Any services not specifically provided for in the above scope will be billed as additional services performed at Capuzzi Consulting's then current hourly rates. Additional services that can be provided include, but are not limited to, the following:

- Meetings beyond those specified in the above Scope of Services
- Traffic Operations Analysis
- Landscaping, Irrigation, and Urban Design
- Electrical Design
- Survey and Mapping
- Geotechnical Engineering
- Right of Way Support Services
- Community Outreach
- CEQA Services
- Any plan sheets not listed in the above Scope of Services
- Key Map Plan Sheets
- SWPPP or equivalent
- Traffic Control Plans
- Coordination for New Electrical Services

Schedule

We will provide our services as expeditiously as practicable within a mutually agreed upon schedule.

Fee Estimate

Capuzzi Consulting will perform the outlined tasks in the scope of services above on a time and materials basis not to exceed \$29,975.

Our team is eager and ready to support the STC Traffic for this important Project. Please contact me if you have any questions.

Very truly yours,

CAPUZZI CONSULTING GROUP, INC.



Matthew Capuzzi, P.E.
CEO