

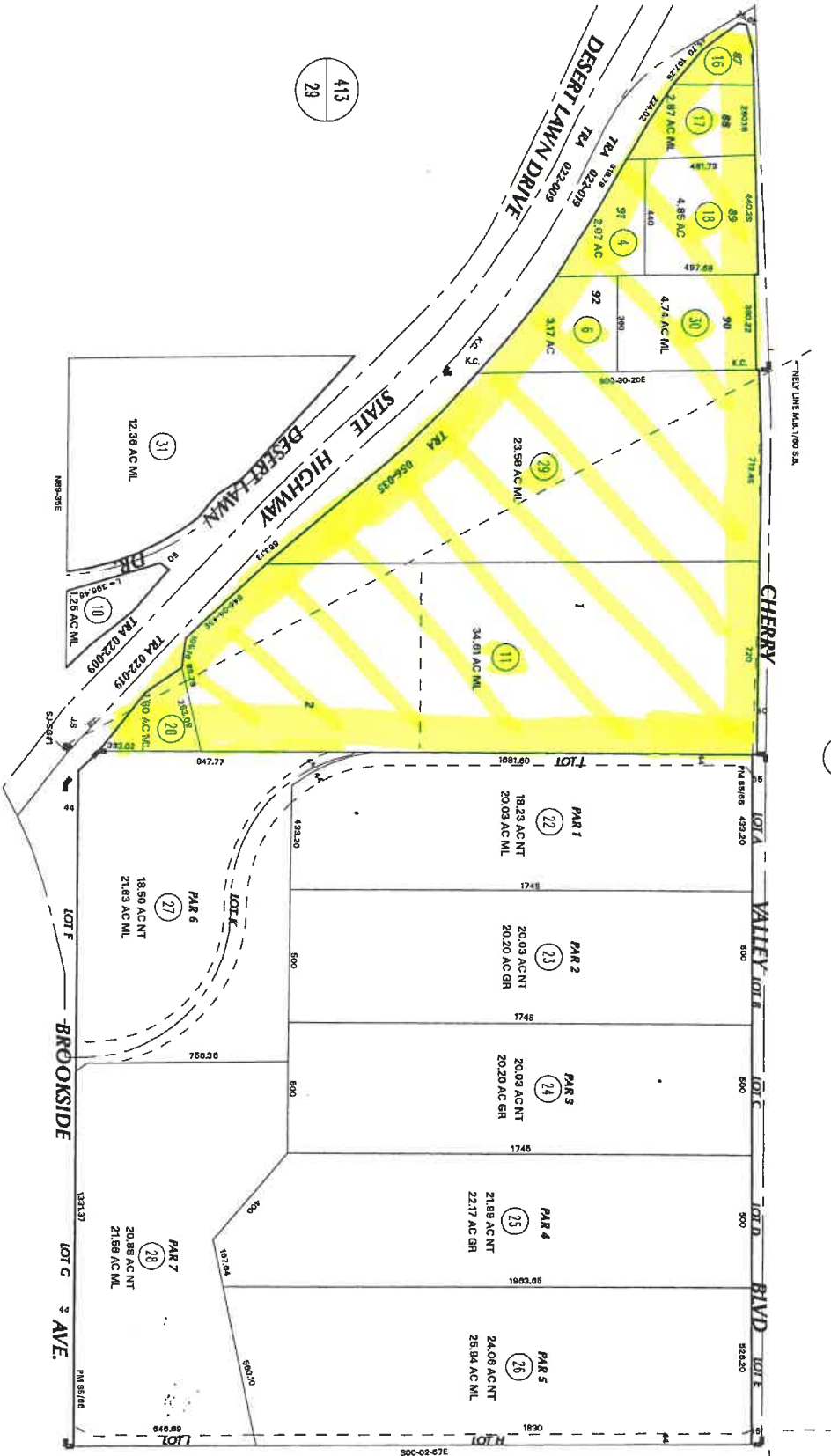
THIS MAP WAS PREPARED FOR ASSESSMENT PURPOSES ONLY. NO LIABILITY IS ASSUMED FOR ACCURACY OF THE DATA SHOWN. ASSESSOR'S PARCEL MAP NOT COMPLY WITH LOCAL LOT SPLIT OR BUILDING SITE ORDINANCES.

JUL 3 0 2007

SEC. 30 T. 2S., R. 1W
CITY OF CALIFORNIA

T. R. A. 022-009
022-019
036-035

407-23
15-32-1



ASSESSOR'S MAP BK407 PG. 23
Riverside County, Calif. A793

DATE: MAP MAP VIII RIV 26-A
SHEET 5 17-25
K.S. 7/18/07/79

1/60 S. B. PLAT OF THE LANDS OF JAMES SINGLETON
MB 13/47-56 KADOTA CITY FIG GROVES
PM 85/66 PARCEL MAP 12218

Jul 2007

DATE	OLD NUMBER	NEW NUMBER
12/14	813	29
5/12	230-912	22
6/10	7	58
6/10	18	30
6/10	15	31
6/10	14	413-290-451
6/10	14	413-290-412