

Fehr & Peers

City of Beaumont Truck Prohibitions

October 7, 2025

Agenda

- 01 Weight Restriction
- 02 Truck Signage Inventory
- 03 Caltrans' Signage Procedure
- 04 Q&A

Caltrans Axle Group Weight Chart

[Weight Limitation | Caltrans](#)

2-Axle



3-Axle



5-Axle



Distance in feet between the extremes of any group of 2 or more consecutive axles Click here for a picture of axle groupings (PDF)	2 axles	3 axles	4 axles	5 axles	6 axles
4	15 tons	34,000	34,000	34,000	34,000
5		34,000	34,000	34,000	34,000
6		34,000	34,000	34,000	34,000
7		34,000	34,000	34,000	34,000
8		34,000	34,000	34,000	34,000
9		39,000	42,500	42,500	42,500
10	18 tons	40,000	43,500	43,500	43,500
11		40,000	44,000	44,000	44,000
12		40,000	45,000	50,000	50,000
13		40,000	45,500	50,500	50,500
14	22 tons	40,000	46,500	51,500	51,500
15		40,000	47,000	52,000	52,000

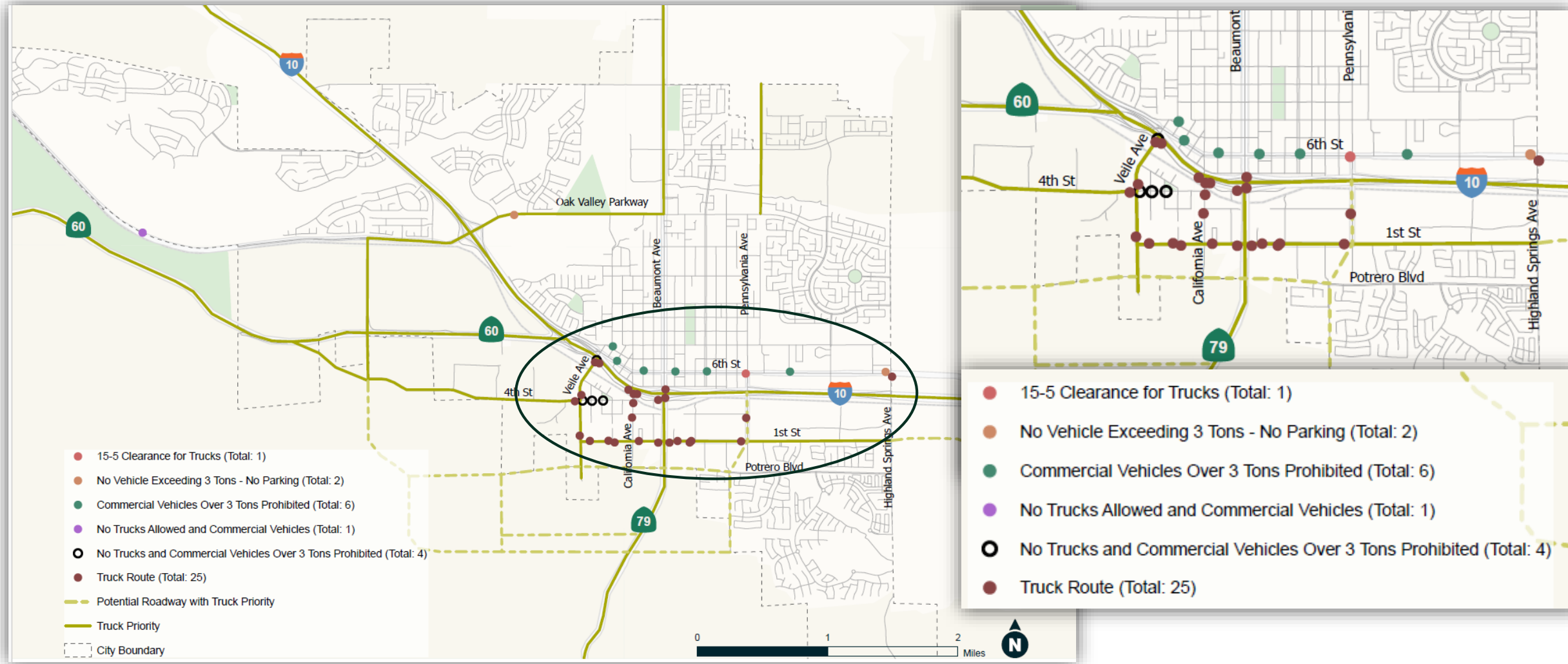
Examples of 3- to 5-Ton Vehicles



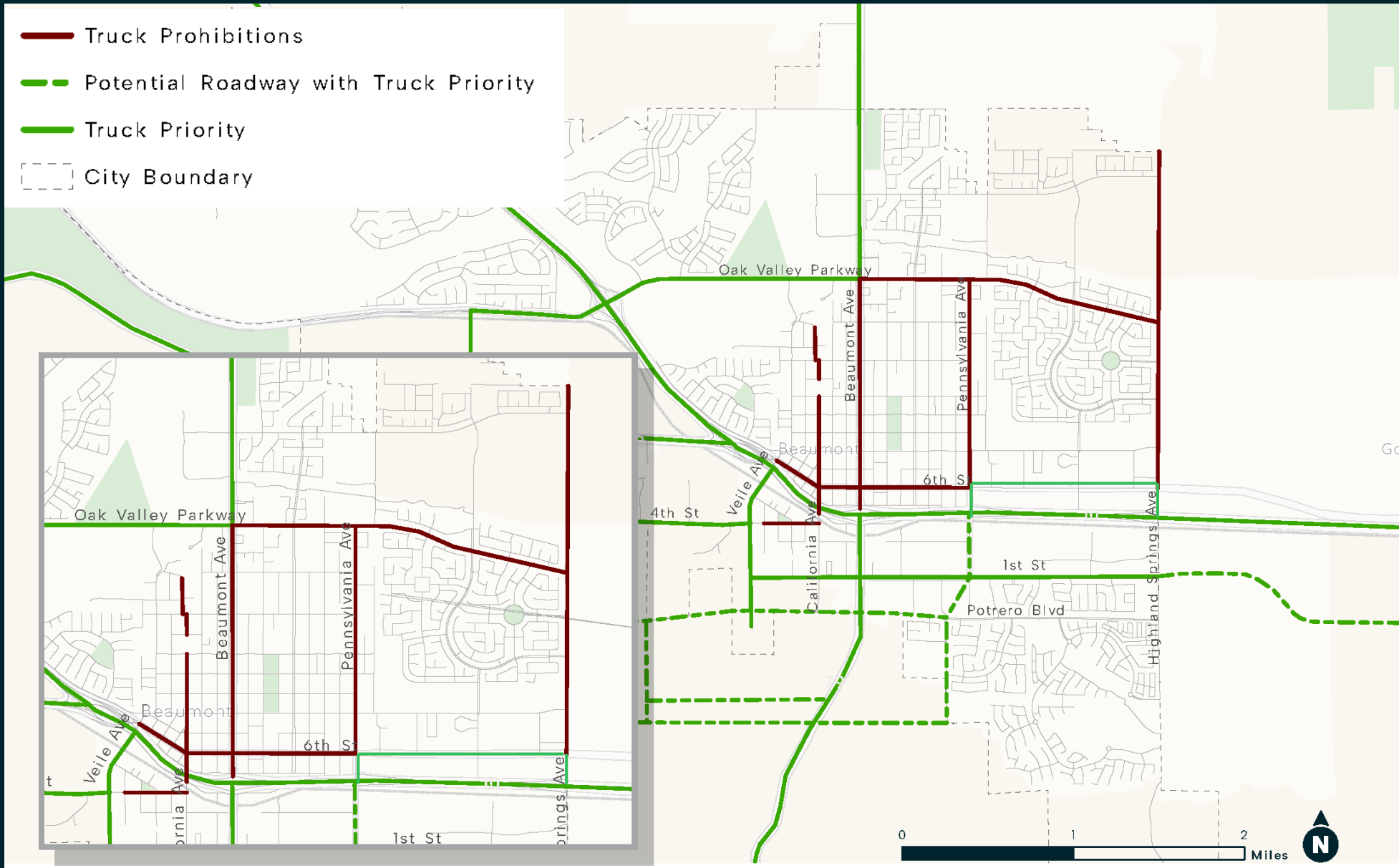
Examples of 7-Ton Delivery Vehicles



Existing Truck Signage



Proposed Truck Routes & Truck Restrictions



Weight Restriction

- Restrict trucks over **7 tons** to accommodate delivery/box trucks (FHWA Classes 3-5 or 6).



Signage on Caltrans' Facilities

Legal Basis for Truck Restrictions | Caltrans

- Prepare a Draft Truck Restriction Ordinance or Resolution
- Prepare Initial Study
- Public Review, Comment Period, Conduct Public Hearing
- Receive Comments and Prepare Final Truck Restriction Report
- Caltrans Traffic Operations Submits Recommendation to the Director's Office
- Caltrans Director Issues Written Approval
- **Pass Final Truck Restriction Ordinance or Resolution**
- Erect Restriction Signs and Enforce Restriction

Q&A

Any questions?