

WASTEWATER TREATMENT PLANT IMPROVEMENTS (CIP WW24-01)



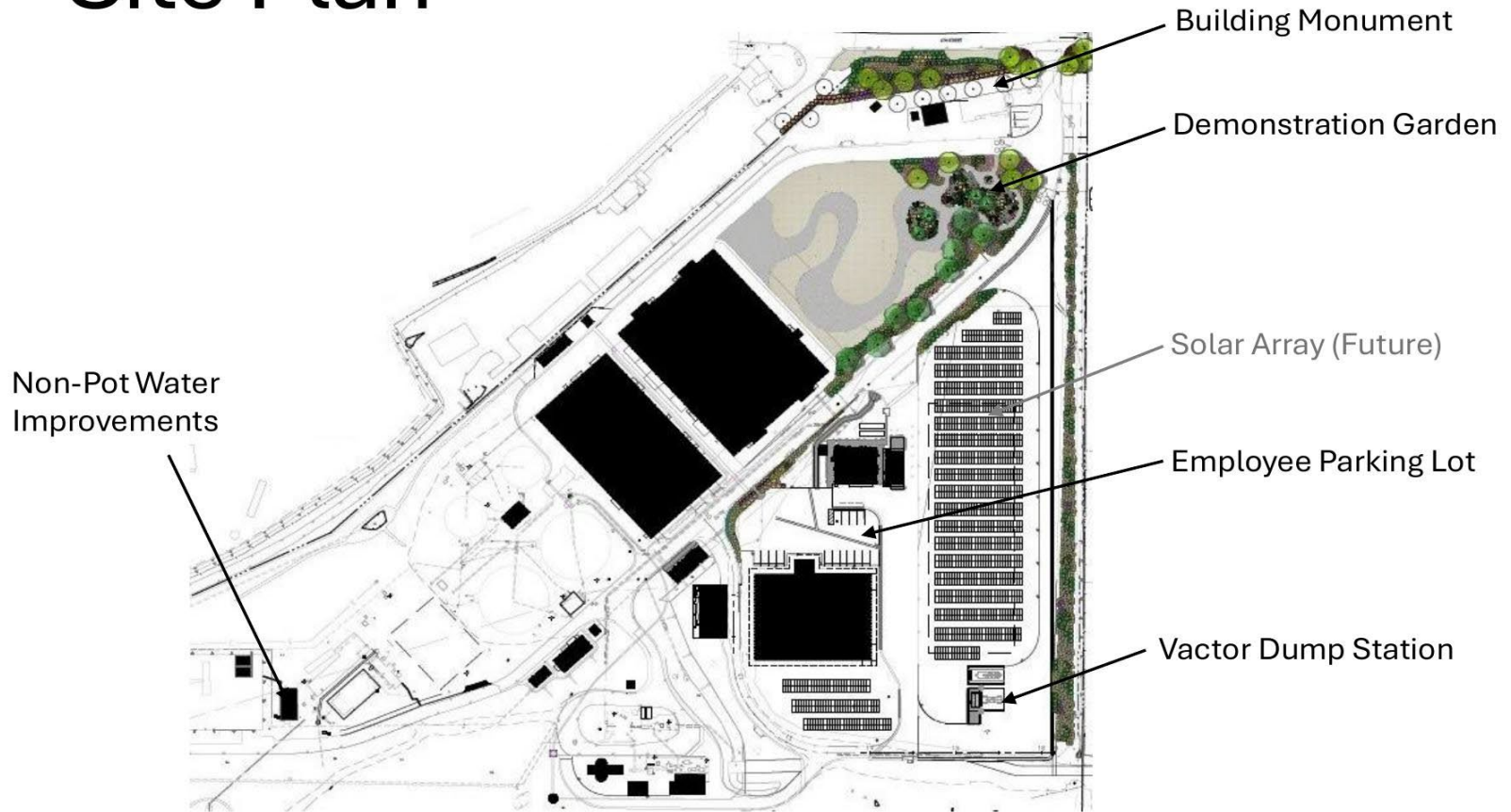
September 2, 2025

Project Overview

Enhancing operations, site stability, and upgrading areas at WWTP to include:

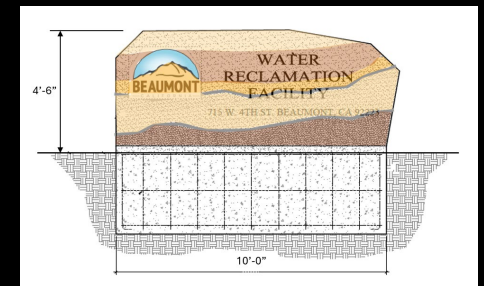
- Vector dump station
- Parking lot with ADA access
- Landscaping with dust and erosion control
- Replacement membrane pumps
- Entry monument & security gates
- Drainage work
- Non-potable water system improvements

Site Plan



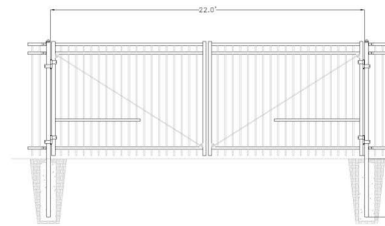
Site Plan

Building Monument

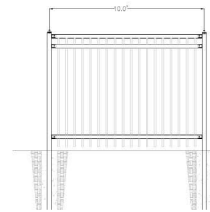


Front Gate Entry

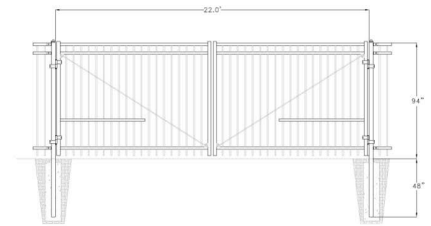
Front Gate Entry



Gate 1



Fence Section

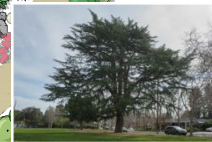
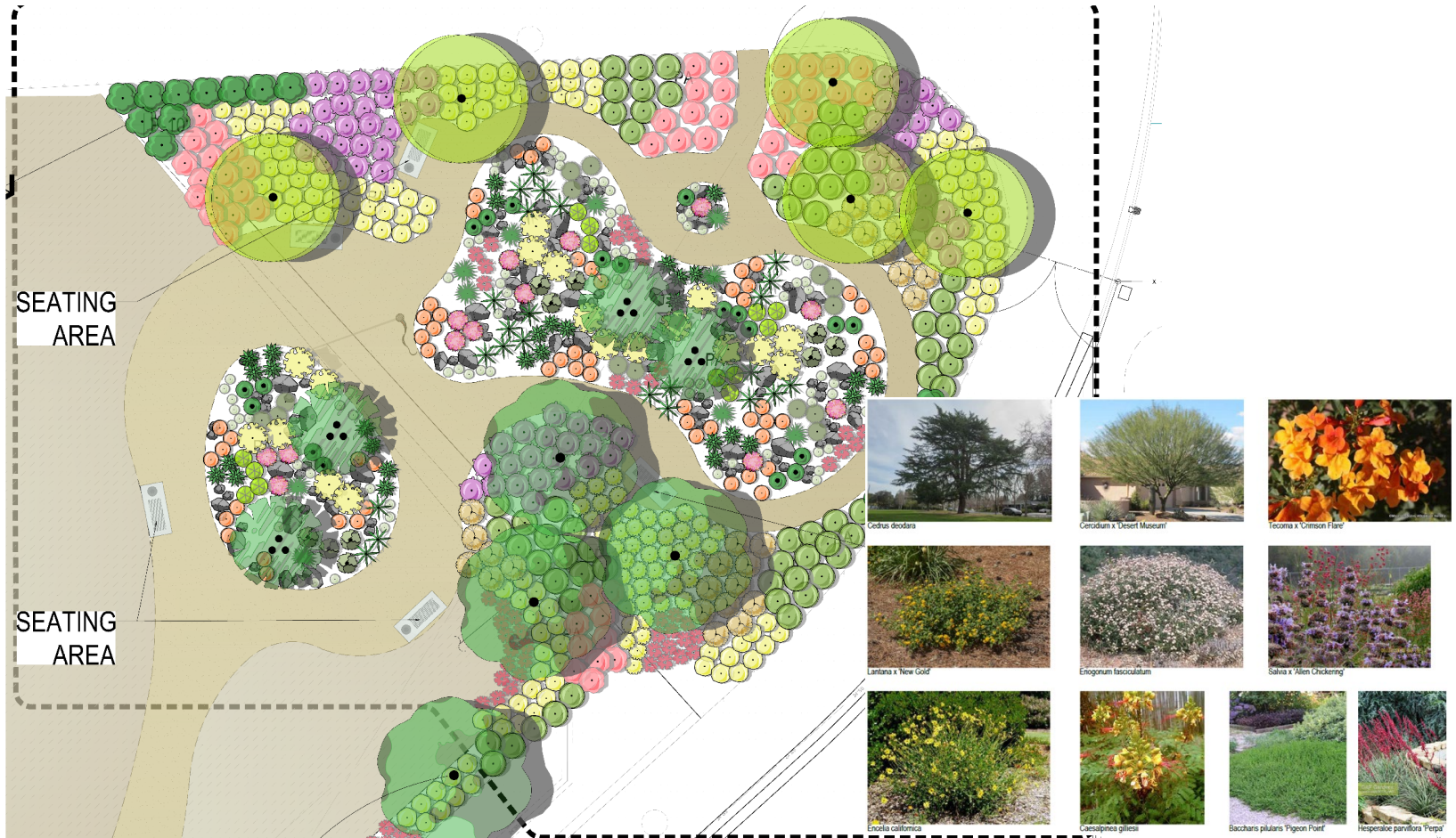


WWTP Entry Improvements includes:

- Automatic Gates and Fencing
- Controlled Access Point
- Security Improvement
- Decorative Appearance



Demonstration Garden



Cedrus deodara



Gerodum x Desert Museum



Ipomoea x 'Crimson Flame'



Lantana x 'New Gold'



Eriogonum fasciculatum



Salvia x 'Allen Chickering'



Encelia californica



Cassipoupa gillessii



Baccharis pilularis 'Pigeon Point'



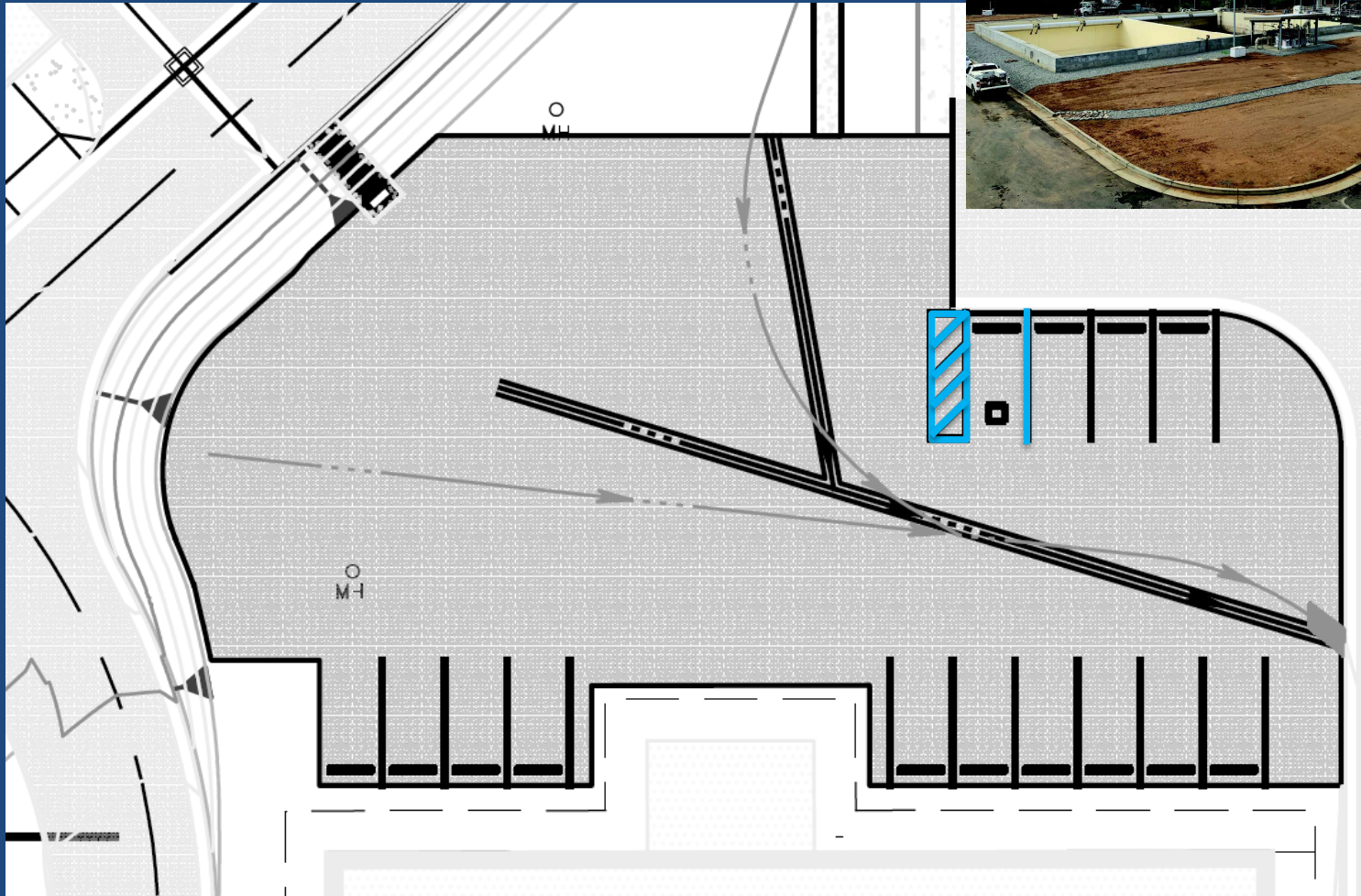
Hesperaloe parviflora 'Pimp'

DEMONSTRATION GARDEN



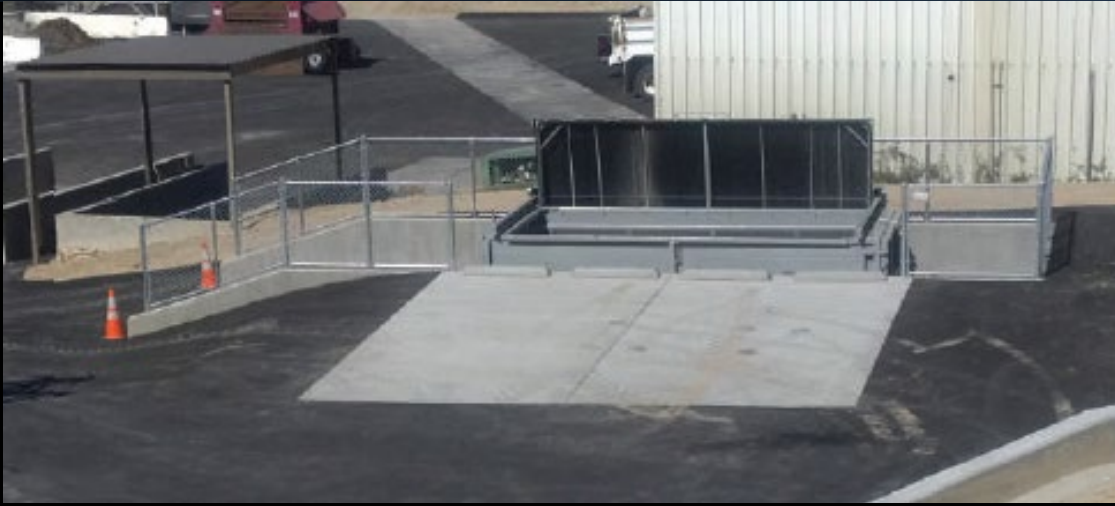
Slope Protection & Dust Control

Parking Lot



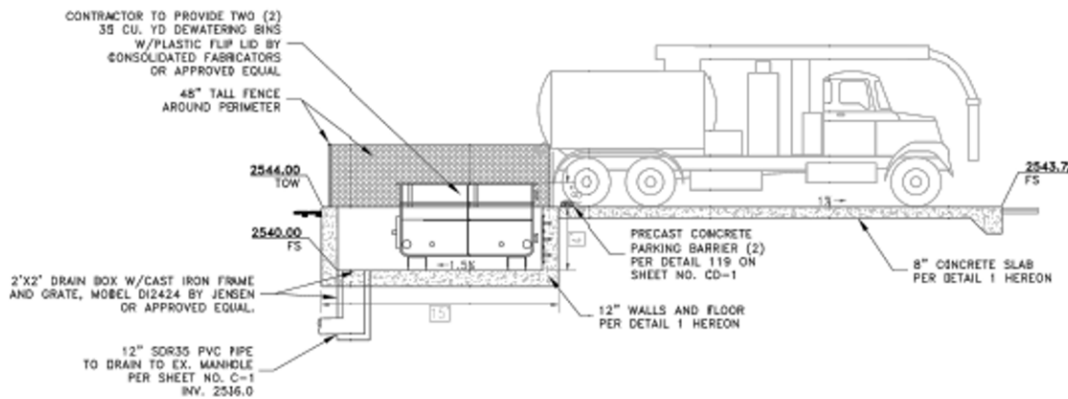
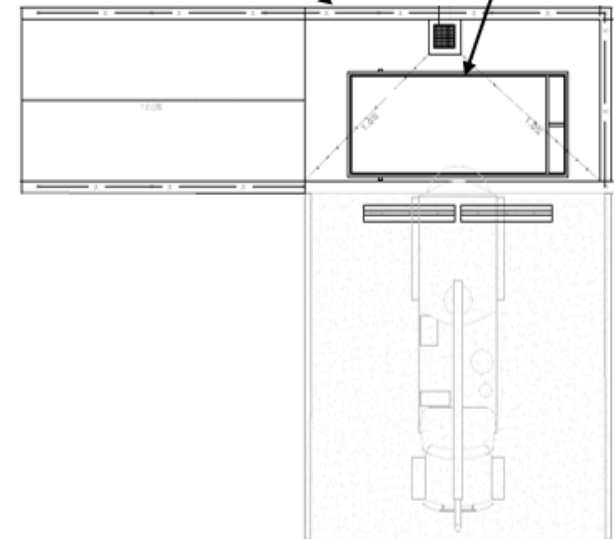
← Lot Entrance

Vactor Dump Station



Wall with fence
on top

Debris Bin



SECTION A
SCALE: 1"=5'-0"

Plan for Beaumont WWTP

- Has side curbs for washdown capability
- Hoses for washdown using recycled water
- Lighting for night use

Pumps and Gates



Misc

