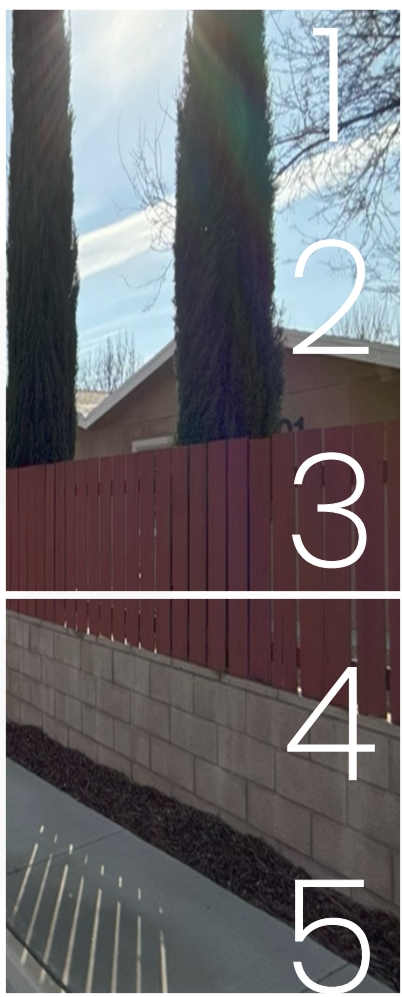




1st Street Feasibility Study City of Beaumont



Agenda



Project Purpose and Need

Existing Conditions

Preliminary Engineering

Environmental Assessment and Funding Analysis

Cost Estimate and Recommendations

Purpose and Need

Purpose: Identify engineering and environmental impacts of widening 1st Street to its ultimate width and scope the future costs of the project phases, and to provide engineering alternatives where feasible.

Need: 1st Street currently is one lane in each direction and requires widening to accommodate the future land use designations and roadway classifications per the City's general plan.



Existing Conditions

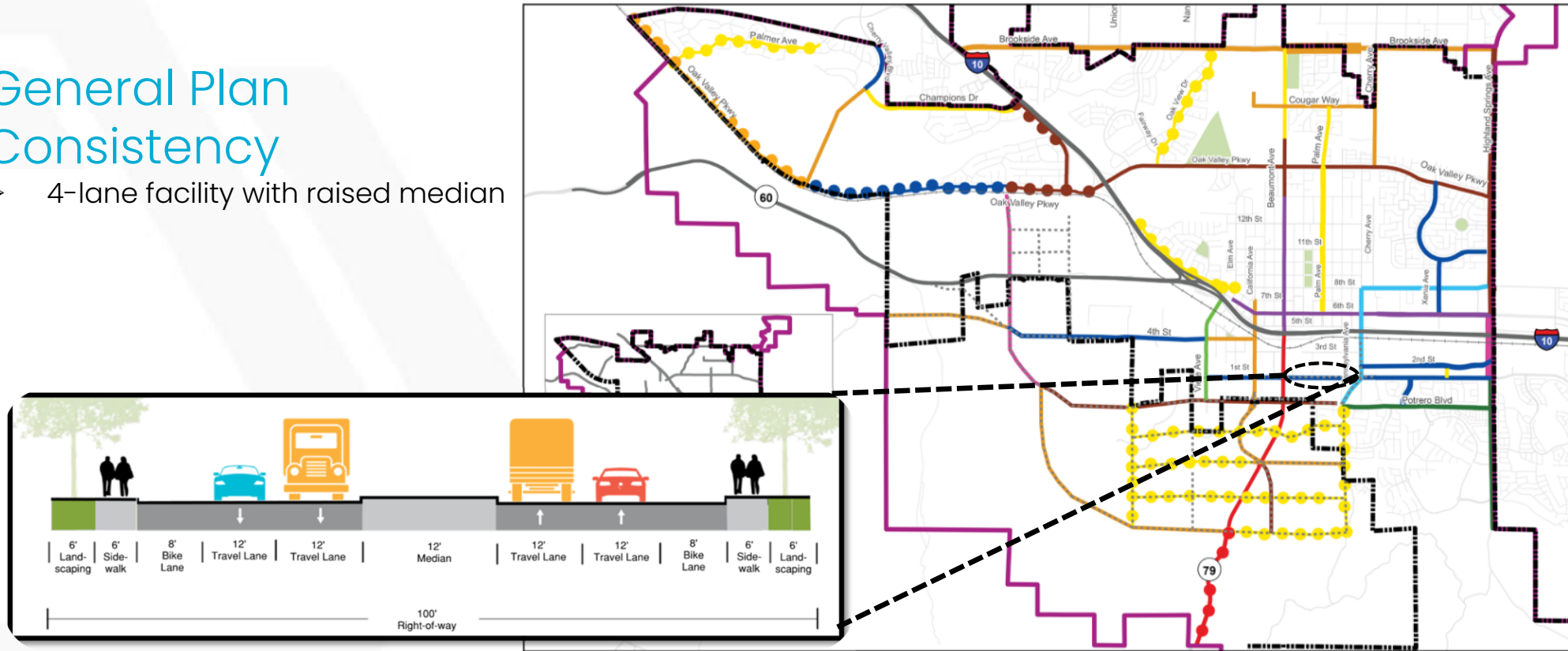
- 2-lane facility with shared left turn lane
- Sidewalk gaps
- Class II Bike Lanes
- Residential and Commercial land uses



Preliminary Engineering

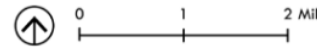
General Plan Consistency

- 4-lane facility with raised median



ROADWAY CLASSIFICATION

- | | | | |
|---------------------|----------------------------|--------------------------------|---------------------------------------|
| City Boundary | Expressway B | Major Highway (Painted Median) | Secondary Frontage |
| Sphere of Influence | Urban Arterial Highway | Major Highway (Raised Median) | Collector Streets (4 Lanes) |
| Proposed Roadways | Arterial Highway (4 Lanes) | Major Frontage | Industrial Collector (Painted Median) |
| Freeway | Arterial Highway Frontage | Downtown Streets | Industrial Collector (Raised Median) |
| Expressway A | Arterial Highway (2 Lanes) | Secondary Streets | |



Preliminary Engineering

➤ Existing Drainage

- Existing conditions consist of 3 locations of 24" reinforced concrete pipe crossings. Overside drains and catch basins are at roadway sag points.

➤ Drainage Design

- Follow Riverside County Transportation Department Drainage Guidelines
 - 10-year storm contained below top of curb
 - 100-year storm contained within Right of Way
- Maintain existing drainage patterns
- Proposed 24" reinforced concrete pipe extensions and new catch basins
- Potential permits from California Department of Fish & Wildlife (CDFW), Regional Water Quality Control Board (RWQCB), Army Corps of Engineers (ACOE)
- Potential BMP implementation within the street parkway.



Preliminary Engineering

➤ Utility Impacts

- As-Builts requested during study



Utility Type	Owner	Potential Impacts
Electrical	Southern California Edison (SCE)	Distribution line poles
Gas	Southern California Gas	High-pressure natural gas pipe
Water	Beaumont-Cherry Valley Water District (BCVWD)	Fire hydrants, water valves, culvert crossings
Wireless/Communication	AT&T	No Facilities
	Frontier (Verizon)	Conduit facilities Copper facilities Fiber optic facilities
	Charter/Spectrum	Underground and Overhead lines

LEGEND

- PAVEMENT WIDENING
- SIDEWALK
- LANDSCAPE
- FIBER LINES
- GAS LINES
- 24" RCP CROSSINGS
- SCE OH LINES
- POTENTIAL JURISDICTIONAL WATERS

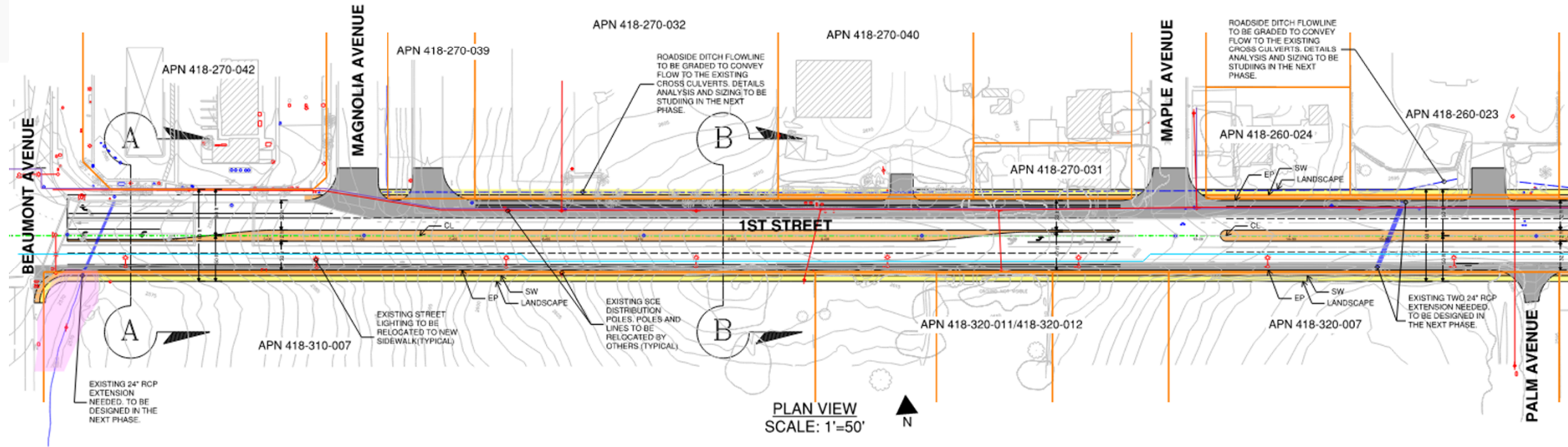
ABBREVIATIONS

- EP - EDGE OF PAVEMENT
- SW - SIDEWALK
- BL - BIKE LANE
- ETW - EDGE OF TRAVELED WAY
- CL - CENTERLINE
- FL - FLOWLINE
- R/W - RIGHT OF WAY
- RCP - REINFORCED CONCRETE PIPE
- LS - LANDSCAPE

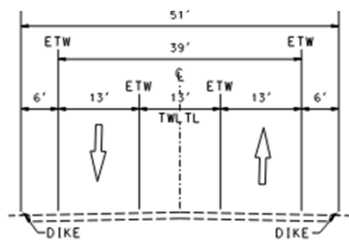
- Vertical profile will be maintained
- Rolling terrain with 400'-550' vertical curves
- Longitudinal Grades vary between 1.0%-6.5%

Preliminary Engineering

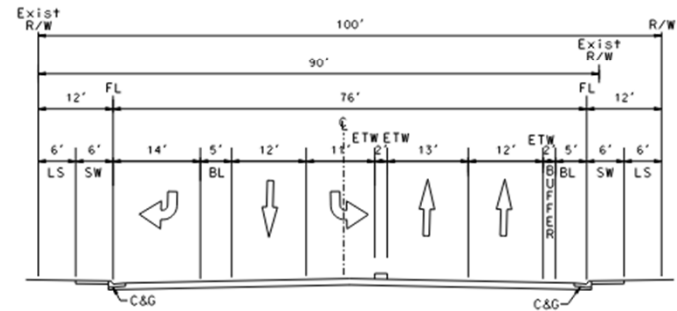
➤ Preliminary Design Layout



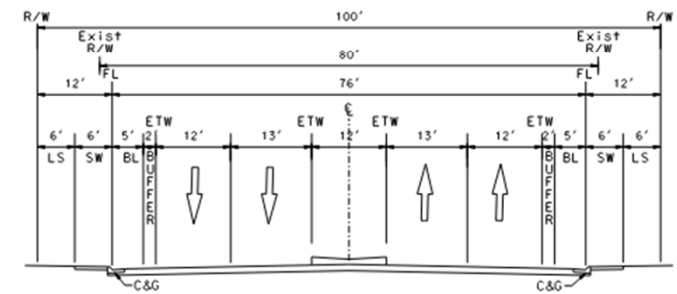
PLAN VIEW
SCALE: 1"=50'



Existing Cross Section



Proposed Section A-A



Proposed Section B-B

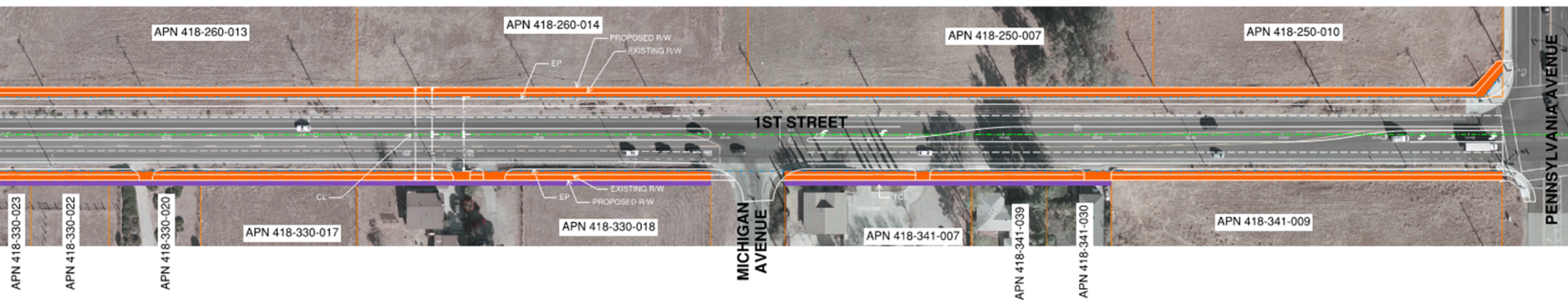
Preliminary Engineering

➤ Right of Way Analysis

- 0.27 acres of TCE Impacts, 1.44 acres of Right of Way Takes



PLAN VIEW



Environmental Assessment

➤ Constraints analyzed

- Agricultural Resources
- Biological Resources
- Hydrology/Flood Zones
- Jurisdictional Waters and Wetlands
- Land Use/Zoning
- Paleontological Resources
- Technical Studies
- Plant/Wildlife Surveys
- Regulatory Permitting
- DBESP (Determination of Biologically Equivalent or Superior Preservation)

➤ Expected Initial Study/Mitigated Negative Declaration (IS/MND)

- Aesthetics
- Agricultural and Forestry Resources
- Air Quality
- Biological Resources
- Cultural Resources
- Energy
- Geology/Soils
- Greenhouse Gas Emissions
- Hazards/Hazardous Materials
- Hydrology/Water Quality
- Land Use/Planning
- Mineral Resources
- Noise
- Population/Housing
- Public Services
- Recreation
- Transportation/Traffic
- Utility/Service Systems
- Wildfire

Cost Estimate

➤ Environmental Clearance and Design (PS&E)

Task	Description	Fee
Project Management	Meetings, Schedule, Contract	\$50,000
Preliminary Design (30% Concept Approval)	Alternative Screening and Selection	\$50,000
Environmental Clearance (CEQA)	Technical Studies, Environmental Document	\$60,000
Utility Coordination and Relocations	Utility Letters, Utility Relocation Coordination	\$15,000
Drainage Analysis and Reports	Hydraulics and Hydrology Analysis, Drainage Report	\$30,000
Geotechnical Analysis and Reports	Geotech Explorations and Report	\$30,000
Right of Way Coordination	Right of Way Requirement Maps	\$25,000
60% PS&E	Plans, Specifications and Estimate	\$290,000
95% PS&E	Plans, Specifications and Estimate	\$80,000
100% PS&E	Plans, Specifications and Estimate	\$55,000
RE File & Bid Support	As-Builts	\$15,000
TOTAL*		\$700,000

* Note: Total Fee does not include Right of Way Acquisitions or Appraisals. Engineers estimate does not include support costs, these costs can be determined during the next phase of the project. Depending on the project schedule and timeline of when the City will plan to construct the project, escalation will need to be factored into the price shown in this estimate.

Cost Estimate

➤ Preliminary Engineers Estimate

Items	Description	Cost
Roadway	Roadway Ex, Pavement, Concrete, C&G, Sidewalk, Curb Ramps	\$1,698,300
Traffic	Signing and Striping, Signal Mods, Electrical/Lighting	\$745,000
Temporary Traffic Control	Temporary barriers, signage	
Drainage	Pipe, Catch Basins, Overside Drains, BMP's	\$562,500
Landscaping	Hardscaping, Planting	\$100,000
Miscellaneous	Relocation of fences, gates, removals, and minor items	\$155,500
Mobilization	10%	\$326,400
Contingency	25%	\$897,500
TOTAL*		\$4,487,500

* Note: Total Fee does not include Right of Way Acquisitions or Appraisals. Engineers estimate does not include support costs, these costs can be determined during the next phase of the project. Depending on the project schedule and timeline of when the City will plan to construct the project, escalation will need to be factored into the price shown in this estimate.

Funding Analysis

State and Regional Grant Program Details Table

Grant Information	State Grants	Regional Grants
	SB 1 Local Partnership Program (LPP)	Regional Arterials Call for Projects
Funding Agency	California Transportation Commission (CTC)	Riverside County Transportation Commission (RCTC)
Minimum/Maximum Grant	None	Max 10% of available funding
Local Match	50%	0%-50%
Eligibility Constraints	Must have voter-approved transportation tax or fee	Construction-ready priority
NOFO Release Date (P) = Projected	August 2026 (P)	TBD
Application Due Date (P) = Projected	November 2026 (P)	TBD

Recommendation/Next Steps

Recommendations

1. Advance to Environmental Phase
2. Conduct Required Surveys and Permitting
3. Refine Preliminary Design
4. Initiate Right-of-Way Planning
5. Coordinate with Utility Providers
6. Pursue Funding Opportunities
7. On-Going Updates to Cost Estimates and Schedule

Next Steps

- Prepare Traffic Analysis
- Perform Environmental Technical Studies and Establish Environmental Footprint
- Develop Geometric Design to 30% , Upon Approval Continue to PS&E 60%, 90%, and 100%
- Conduct Geotechnical Investigations and Analysis
- Prepare Right of Way Maps
- Continue Utility Coordination
- Determine Vehicle Miles Traveled Impacts and mitigation strategies (Critical Path Item)

Questions and Answers

