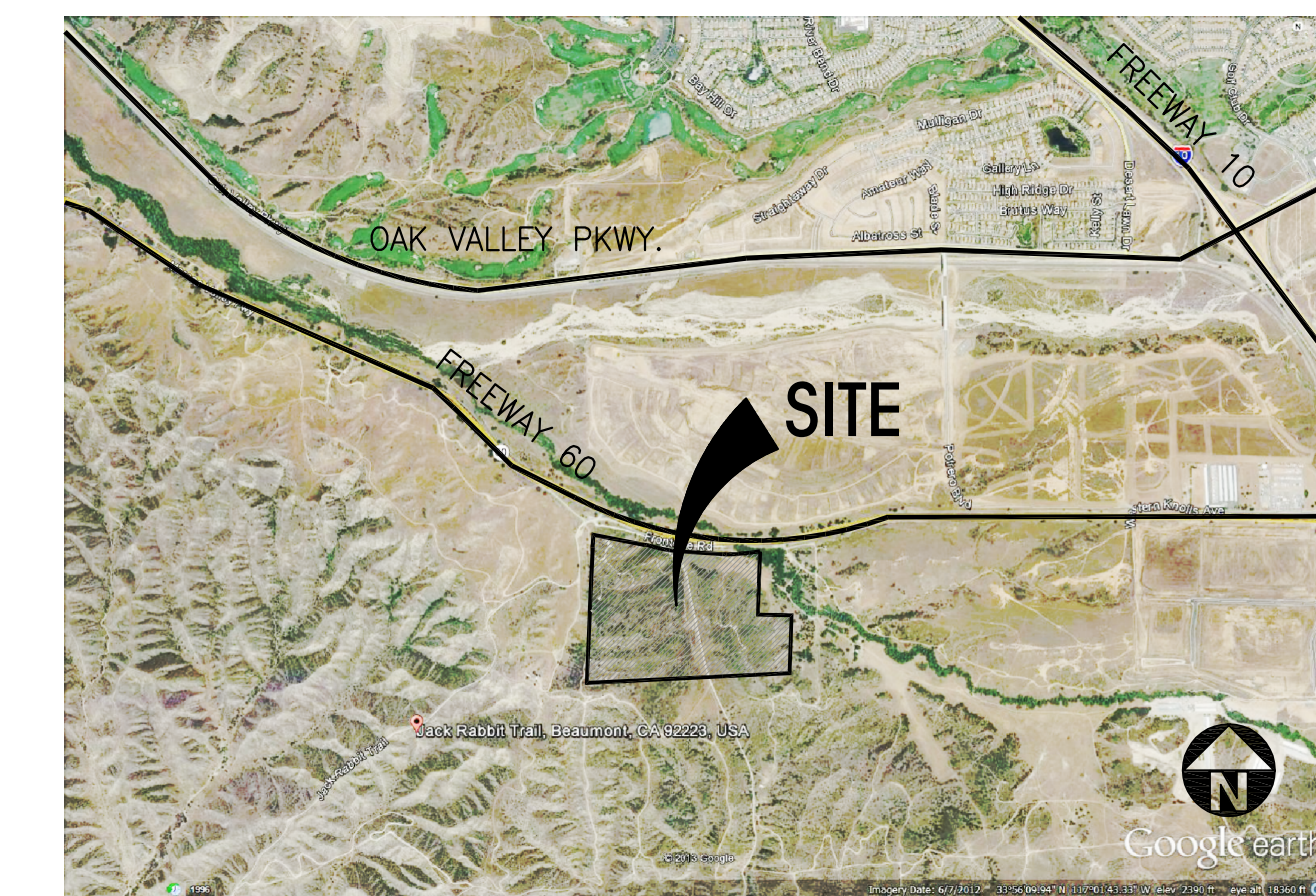


### Tabulation

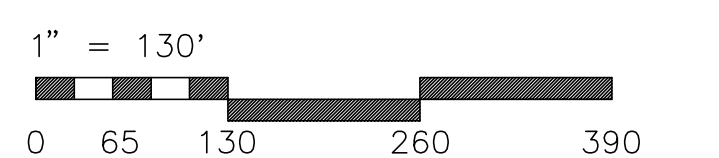
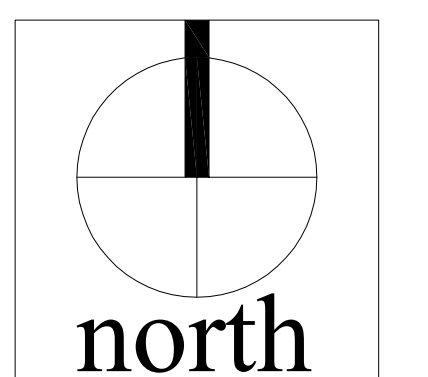
	Building 1	Building 2	Parcel "B"	Total for Bldg 1, Bldg 2 & Parcel B	Parcel "A"	Parcel "C"	4th Street (Lot 1)	Lot 2	Total
<b>Site Area (Gross)</b>									
sq.ft.	4,373,547	3,057,854	238,393	7,669,794	85,269	875,262	254,916	10,793	8,896,034 sf
acres	100.403	70.199	5.473	176.074	1.958	20.093	5.852	0.248	204.225 acres
<b>Site Area (Net)</b>									
sq.ft.	3,715,568	2,496,565	215,520	6,427,653	85,269	869,635	254,916	10,793	
acres	85.298	57.313	4.948	147.56	1.958	19.964	5.852	0.248	
<b>Building Area</b>	1,867,040	1,000,170		2,867,210					
<b>Coverage (Net)</b>	50.2%	40.1%		44.6%					
<b>Parking Provided</b>									
standard	314	494		808					
trailer	423	425		848					
<b>Parking Provided Provided</b>	737	919		1656					

### Aerial Map



### Legend

- OFFICE
- WAREHOUSE
- FUTURE COMMERCIAL SITE
- DRIVE THRU DOOR



Site Plan

# Beaumont Distribution Center

Beaumont, California



18831 Bardeen Ave. - Ste. #100  
Irvine, CA 92612  
(949) 863-1770  
www.hparchs.com



February 09, 2016 / Job #10282  
Scheme 22