



## STATEMENT OF QUALIFICATIONS

Submitted by NV5, Inc.  
42829 Cook Street, Suite 104, Palm Desert, CA 92211

### City of Beaumont

City Staff Augmentation and Project Management Services  
November 13, 2024

# TABLE OF CONTENTS

## Table of Contents

A. Cover Letter	03
B. Introduction/Information	04
C. Approach	05
D. Firm Profile	09
E. Principal Office Location	09
F. Resumes	See Appendix   A1
G. Key Personnel	10
▶ <i>Organizational Chart</i>	<b>10</b>
▶ <i>Summary of Skills</i>	<b>11</b>
H. References	13
I. Scope of Services	16
J. Cost Proposal	Separately Sealed Envelope
K. Additional Information	19
L. Insurance	19
<b>APPENDIX</b>	
Resumes	A1
Addendum Acknowledgment	A25



# A. COVER LETTER

PN:2820224-0001475.00

November 13, 2024

City of Beaumont  
Attn: Raveena Chara, Procurement & Contracts Specialist  
550 E. Sixth Street  
Beaumont, CA 92223



## SUBJECT: City Staff Augmentation and Project Management Services

Dear Ms. Chara,

The City of Beaumont (City) is a growing community dedicated to improving infrastructure and providing quality public services and amenities to enhance the quality of life for its citizens. NV5, Inc. (NV5) is excited to have the opportunity to provide City Staff Augmentation and Project Management Services to the City, bringing the technical knowledge and experience to deliver your projects in the most cost-efficient and cost-effective manner. NV5's strengths include the following:

**Current Partnership:** Our experience and strong existing relationship with the City gives us the ability to provide Staff Augmentation, Project Management, Construction Management and Project Design Services for your capital improvement projects. We have been providing On-Call Plan Checking, Inspection and Survey Services to the City since 2016 and operate with a working knowledge of your staff, processes and environment, enabling us to provide outstanding cost- and time-efficient services.

**Relevant Experience:** We have been providing experienced professionals for on-call project management and staff augmentation contracts for several years. Public agencies contract with our firm when it is not cost-effective to fill a full-time position, to relieve peak workload situations, or to fill vacant positions on an interim basis. We select, train, and retain highly qualified employees to supplement contracting cities' staffing requirements. Our professional staff has expertise in a wide range of disciplines and extensive experience in many areas, including project management, construction management, and design engineering. We are committed to providing superior, high-level services to our clients. We do so by maintaining a core of qualified staff possessing a wide range of skills that we match with our clients' needs.


**Proposed Team:** Understanding both the needs of the City and its Capital Improvement Program, NV5 has assembled a team of high-level professionals who will be made available to the City upon request, including Professional Engineers, Construction Managers, and Urban Planners. Our team will be led by **Tamara O'Neal, PE**, who has more than 28 years of experience providing municipal engineering services and is currently managing NV5's On-Call Plan Checking, Inspection, and Survey Services team with the City. In addition to having direct public agency employment experience, Ms. O'Neal has provided extension of staff services on a consultant basis for numerous cities, as well as water and sanitation districts in Riverside, San Diego, Orange and Los Angeles counties.


**Addendum Acknowledgment:** We have received Addendum No. 1 dated October 30, 2024, and Addendum No. 2 dated October 30, 2024.

**Proposal Authorization and Validity:** This proposal has been signed by **Jeffrey M. Cooper, PE**, a company officer authorized to bind the firm.

NV5 looks forward to the opportunity to continue to work with the City and help you achieve your goals and objectives. If you need further information, we may be reached by phone at (949) 585-0477, or electronically at [tamara.oneal@nv5.com](mailto:tamara.oneal@nv5.com) and [jeff.cooper@nv5.com](mailto:jeff.cooper@nv5.com). Thank you for your time and consideration.

Sincerely,  
NV5

  
Tamara O'Neal, PE  
Director of Municipal Services

  
Jeffrey M. Cooper, PE  
EVP, Chief Operating Officer

### COMPANY INFORMATION/CONTACT

**Authorized Signer Name:** Jeffrey M. Cooper, PE  
**Authorized Signer Title:** EVP, Chief Operating Officer  
**Address:** 133 Technology Drive, Suite 200,  
Irvine, CA 92618  
**Telephone Number:** (949) 585-0477

42829 Cook Street, Suite 104 | Palm Desert, CA 92211 | [www.nv5.com](http://www.nv5.com) | Office: 858.385.0500 | Fax: 858.385.0400

## B. INTRODUCTION/INFORMATION

### Introduction and Project Understanding

NV5 understands that the City intends to award a consultant agreement to provide an extension of City staff and project management services for the City's Capital Improvement Program (CIP). Services will include assistance with all aspects of the CIP program, including management of planning and environmental consultants, review of planning and environmental documents, management design consultants, review of project designs, CAD work and drafting, preparation of bid plans and specifications, assistance with bidding and contract award process, construction management including management of contractors and construction service providers, and review of construction RFIs and submittals.

We have reviewed the City's RFP and CIP in its entirety and understand that anticipated projects under this contract may include the planning, design and construction management of: street and sidewalk improvements and rehabilitations; parks and facility improvements and rehabilitations; wastewater improvements and rehabilitations including sewer mains and lift stations; Caltrans intersections, overpasses, and ramps including bridges and overpasses; UPRR grade separations including bridges and underpasses; and other public infrastructure projects.

NV5 has the resources, experience, and technical knowledge to successfully deliver the City's CIP and maintenance projects. Our typical approach to providing staff augmentation/project management services has been included on **Page 5** and can be tailored to fit the City's and project's needs.

### Accomplishing Objectives of Scope of Services

For decades, we have been dedicated to providing highly qualified and experienced professionals through staff augmentation contracts. Our team is well-versed in seamlessly integrating with municipal staff, effectively acting as an extension of an agency's workforce. We possess the resources to respond promptly to the City's needs and have the flexibility to scale our staffing in accordance with your workload and requirements.

Our proposed scope of services for this contract, detailed on **Page 16**, is designed to be adaptable and can be customized to further align with the City's specific needs. We are committed to delivering exceptional service and assuring that your staffing demands are met with efficiency and expertise.

### Firm Information

**Name of Firm Submitting Proposal:** NV5, Inc.

**Mailing Address:** 42829 Cook Street, Suite 104 Cook Street, Suite 104, Palm Desert, CA 92211

**Telephone No.:** 858.385.0500

**Name of Individual to Contact if further Information is Required:** Tamara O'Neal, PE, Project Manager

### Current City Engineering/Project Management Contracts

We have a proven track record of successfully providing On-Call City Engineering/Project Management services to municipalities throughout Southern California, most of which have been repeat clients. Our team is currently providing services to dozens of agencies, including:

- |   |  |   |
|---|--|---|
| <ul style="list-style-type: none"><li>• City of Brawley</li><li>• City of Dana Point</li><li>• City of El Monte</li><li>• City of Imperial Beach</li><li>• City of Irvine</li></ul> | <ul style="list-style-type: none"><li>• City of La Habra Heights</li><li>• City of La Mesa</li><li>• City of Laguna Hills</li><li>• City of Laguna Woods</li><li>• City of National City</li></ul> | <ul style="list-style-type: none"><li>• City of Pomona</li><li>• City of San Bernardino</li><li>• City of San Juan Capistrano</li><li>• City of Santa Fe Springs</li><li>• City of Villa Park</li></ul> |
|---|--|---|

# C. APPROACH

## Project Understanding

We have based our project understanding on our review of the Scope of Services included in the RFP and our work on similar assignments for cities and special districts throughout Southern California. It is our understanding the City is seeking a professional engineering firm to provide an extension of City staff and project management services for the City's Capital Improvement Program (CIP).

NV5 can provide engineering and construction project management, construction management and engineering design work for capital projects and facility upgrades; ensure that capital project schedules, cost and overall quality performance objectives are met across a diverse range of capital improvement projects; coordinate, manage, and monitor the progress of assigned projects and programs at all stages of development to ensure timely/efficient/cost-effective completion of the capital projects; and perform related work as required.

NV5 can provide professional, comprehensive project management services on a per project or task order basis for all types of capital improvement projects. Below is our general project approach that will be modified and tailored to meet each project's needs.

## Project Approach

NV5 can provide Staff Augmentation/Project Management Services to help assure smooth operations within the Public Works Department; assure that capital project schedules, cost, and overall quality performance objectives are met across a range of capital improvement projects; coordinate, manage and monitor the progress of assigned projects and programs at all stages of development to assure timely/efficient/cost-effective completion of the capital projects; and perform related engineering support work as required.

### COMMUNICATION

Our Project Manager will be the point of contact for all project correspondence and communication between the City, the contractor, the design team and other project stakeholders. Our team will be in constant communication with the City, making sure the City has the most updated information on project status, as well as any on-site or any contractual issues.

### STAYING CONNECTED

Our staff is equipped with the technology to work efficiently and stay organized and connected with our

clients. NV5 utilizes Microsoft Teams to efficiently collaborate; easily find, share and edit files in real time; meet virtually; and streamline workflows all on one single platform. NV5 has access to several virtual meeting platforms in addition to Microsoft Teams, including GoToMeeting and Zoom.

### GENERAL APPROACH TO PROJECT MANAGEMENT

All projects, regardless of size or complexity, will suffer if they are not managed properly. For this reason, we place high priority on developing a strong project organization and overall project management approach. Even with our broad depth of resources and experience, we recognize that people make projects successful. Quick and responsive solutions, while being sensitive to community issues, are the cornerstones of our accomplishments and company traditions.

### PROJECT DELIVERY STRATEGY

The basis of developing a project delivery strategy is based on preparing a Project Management Plan (PMP). The PMP is a living document that will provide the organization and guidelines for project work and will demonstrate that the team has the technical capabilities to carry the project from inception to completion. Listed below are elements that will be included in the PMP.

- **Roles and Responsibilities:** This section requires the illustration and discussion of the project's organizational chart, job descriptions, reporting and functional relationships, as well as resumes for all key positions.
- **Work Breakdown Structure (WBS):** The WBS is the structure by which all work is organized and monitored. The WBS will be utilized for document and project controls, and to track costs and budget.
- **Risk and Contingency Management Plan (RCMP):** This plan establishes a risk register that enables the visibility and tracking of known risks. Additionally, the RCMP establishes the processes through which risks are responded to, measured, and controlled. A component of this plan will describe the levels of contingency for each phase, the reasoning for those levels, and how surpluses or deficits in contingency will be handled.
- **Quality Assurance/Quality Control (QA/QC) Plan:** This plan establishes quality procedures for all deliverables and project management. These procedures will be established for each phase of the project to make sure that all deliverables meet high quality standards, and will also include

## C. APPROACH

procedures to address deficiencies.

- **Project Controls Plan (PCP):** This plan will utilize the WBS noted above to confirm that all project work stays on schedule and within the budget. The PCP is a comprehensive approach to track project deliverables and the associated budget.

### TIMELY COMPLETION AND SCHEDULE MANAGEMENT

Our approach to ensuring that all phases of the project are completed in a timely manner is to establish and maintain an overall project schedule. All updates and changes are documented for the City's review. We also include project milestones and points of essential input by the City team. In all cases, the City is notified in advance of each milestone and scheduled review so that it may prepare materials in an orderly manner.

Our ability to "drive" the project forward is our hallmark for success. We strongly believe that by aggressively and pro-actively managing the project and the performance of project team members, we will produce positive results and complete the project in a timely manner.

### MANAGING PROJECT BUDGET

Utilizing budget control and reporting tools, we focus on accountability, documentation and record keeping, and communicate often on key project issues with the City.

Project Managers apply budget control systems and carefully monitor project budgets. Project Managers closely track work quality of all members of the project team to ensure budgets are adhered to. Work and budget plans are prepared before work is started and are submitted to the City program manager for approval. After those are secured, the Project Manager monitors the team members to ensure the work is done within the scope of services identified and the work is being performed within the budget and schedule approved by the City program manager. Specifically, Project Managers monitor that milestones are met, funding strategies are implemented, and that there is regular invoicing for fund reimbursements. Anything not meeting the performance expectations is brought to the immediate attention of the City.

### QUALITY ASSURANCE/QUALITY CONTROL

During the design phase, we will perform extensive constructability and value engineering reviews of the design documents. We will identify the critical areas of design and focus our reviews accordingly. These areas include grading/drainage, asphalt and concrete paving improvements, traffic signal modifications, ADA

accessibility, quality and specifications of hardscape materials, site lighting, and irrigation systems. We will verify that all disciplines are coordinated and that there are no conflicts. This in turn will minimize the potential for any changes during construction.

During construction, we will coordinate all required project inspections and reports. We will ensure that the various City inspectors are contacted by the Contractor according to City requirements and will attend/facilitate meetings and on-site inspections to ensure that all work is being constructed and approved according to the contract documents and project schedule.

The oversight of the Contractor's Quality Assurance and Quality Control programs is very important to the success of any project. We will establish a protocol with the Contractor to ensure that the work that is performed on a day-to-day basis is in compliance. We also will require that the Contractor submit a project-specific QA/QC program that specifically outlines and addresses the critical issues and areas that we identify during the design phase of the project. We also will require that the Contractor designate an on-site team member as QA/QC manager to be responsible for conducting walk-throughs and to perform periodic checklists to ensure that all work complies with the QA/QC manual. All deficiencies will be documented and all remedial work will be managed by NV5 and the necessary consultants.

### PROGRESS REPORTING

We will create financial reports and project status reports to monitor the overall program delivery. Through these reports, we will develop a project control system with "checks and balances" to accomplish the following:

- Provide accurate, up-to-date information on project budgets, status of work, emerging project issues
- Provide up-to-date financial expenditures to assist the City regarding the burn rate on the project among various programmed phases, as well as the type of revenues being expended
- Implementation of the "checks and balances" monitoring of budgets. By creating reports, the "checks and balances" is achieved in several ways:
  - The project manager will verify accuracy of budget expenditures and make any needed corrections immediately
  - The City can review to double-check eligible expenditures are in line with approved budgets
  - The public works director can quickly examine the status and funding of the project



# C. APPROACH

## DESIGN MANAGEMENT

Our team focuses on three elements to ensure the timely and successful completion of the project design. These are:

- **Prevention of Scope Creep:** We will work closely with the City and design team to ensure a disciplined effort that keeps the original project goals and objectives in clear focus.
- **Establishment and maintenance of a design schedule:** We will ensure that critical review and completion milestones are met. Should the schedule slip, we will work closely with the design team to formulate a recovery plan.
- **Extensive reviews of the plans and specifications:** We will assure that all disciplines are coordinated and that there are no conflicts. This will minimize the potential for any change orders.

## COST ESTIMATING

The basis for reliable cost estimates will be the development and updating of standard project bid items, refinement of the existing Caltrans cost estimating guidelines and to identify the big-ticket items that generally control project costs. Typically 10-15 items (sometimes less) drive project construction costs. We excel at early identification and analysis of those key construction items, and, as a result, our initial estimates generally prove accurate.

NV5 maintains an extensive database of unit prices for public works construction items. This database is regularly updated to formulate accurate cost estimates

## SCHEDULE CONTROL

The key to effective schedule control is to regularly measure actual progress and compare it to planned progress and to take any corrective action immediately. We propose to supplement each major task as identified in the master project schedule with a supplemental schedule to keep careful track of where each individual component stands. We identify problems that may result from delays and readily provide the opportunity to modify the schedule, as required. This process ensures the completion of your projects on schedule.

## COST CONTROL AND REPORTING

Cost control is a key element to successfully delivering a project and must be thoroughly integrated with other control methods (scope change control, schedule control and quality control) to assure that the City receives full value for all funds earmarked for the

project. Key elements of our cost control program include establishment and maintenance of a budget; value engineering and constructability reviews of plans and specifications; sufficient vetting of owner-requested or contractor-generated changes; thorough review and evaluation of change order cost proposals; close monitoring of force account work; and regular maintenance of a change order log. NV5 provides a monthly report that includes work accomplished during the reporting period, work to be completed during the next reporting period, budget and schedule status, and a summary of issues and concerns pending resolution.

## FAMILIARITY WITH STATE AND FEDERAL PROCEDURES

We understand the development of Federal- and State-funded projects requires more than the preparation of design reports and PS&E. More and more, engineers are required to navigate their projects through the complex federal aid process involving pre-award audits, authorizations, and timely use of fund provisions. Our experience with the regulatory agencies controlling these funding sources has afforded us the opportunity to support our clients through the process of developing the day-to-day procedures required to secure authorization and reimbursement for federally funded projects. This participation has put us in a position to offer our clients an unparalleled level of understanding of the process required to comply with Federal and State requirements. Our work with local, state and federal agencies keeps us in the forefront of current updates to policies and procedures.

## GENERAL APPROACH TO CONSTRUCTION MANAGEMENT

Our approach to construction support services is centered on our established policy of consistent and effective employee oversight. The Project Manager will closely monitor projects to verify that our construction managers and inspectors are performing within the guidelines of our established management and inspection procedures, which are patterned after the Caltrans Construction Manual. NV5 takes this a step further by formulating and implementing a proactive public relations program and a concerted effort to identify previously unforeseen potential claims.

## SCHEDULE CONTROL

Our construction support services team gives considerable attention to monitoring project schedules. We will coordinate, review and make recommendations

## C. APPROACH

for changes to the Critical Path Method (CPM) schedule generated by the contractor. As changes or discrepancies occur between the CPM schedule and as-built conditions, the project schedule and cost estimates will be updated. We will review the contractor's schedule on a weekly basis and will maintain an as-built/working schedule to reflect as-built conditions to date.

### **COST CONTROL AND REPORTING**

Cost control is a key element to successfully delivering a project and must be thoroughly integrated with other control methods (scope change control, schedule control and quality control) to assure that the City receives full value for all funds earmarked for the project. Key elements of our cost control program include establishment and maintenance of a budget; value engineering and constructability reviews of plans and specifications; sufficient vetting of owner-requested or contractor-generated changes; thorough review and evaluation of change order cost proposals; close monitoring of force account work; and regular maintenance of a change order log. NV5 provides a monthly report that includes work accomplished during the reporting period, work to be completed during the next reporting period, budget and schedule status, and a summary of issues and concerns pending resolution.

### **QUALITY ASSURANCE AND QUALITY CONTROL**

To assure compliance with the plans and specifications, we will implement a comprehensive quality assurance and quality control (QA/QC) program involving the following steps:

- We will perform a thorough review of the contract documents. This responsibility will include the following tasks:
  - Checking plans and specifications against requirements that have been associated with issues that occurred on similar jobs.
  - Comparing existing elevations, grades and details, etc., shown on plans with those at the actual site.
  - Reporting all errors, omissions and deficiencies, etc., to the City and engineering design team.
  - Keeping a marked-up set of plans and specifications for quick reference.
  - Anticipating the Contractor's operations by reviewing the plans and specifications for each one before it begins.
- Before start of construction, we will discuss with the Contractor the definable features of work to assure that documentation is complete, materials

are on hand and those who are to perform the work understand the scope in its entirety.

- At the onset of the work, we will perform an initial inspection to determine whether the Contractor thoroughly understands and is capable of accomplishing the work as specified.
- We will assure that the Contractor has an established safety program and that regular safety meetings are conducted. We will also assure that the Contractor meets all OSHA safety requirements.
- The construction inspector will perform follow-up inspections on a daily basis for the purpose of assuring that the controls established during the initial inspection continue to provide work that conforms to the contract requirements and all applicable standards. Unsatisfactory workmanship, materials and construction deficiencies will be documented and reported for future identification and traceability. Notices of non-compliance will be issued to the Contractor and corrective and preventive action will be taken to assure compliance with the contract documents.
- We will conduct a monthly review of the as-built drawings and assure that all items are considered in the changes of the record drawings, including:
  - The size, type and location of existing and new utility lines
  - The layout and schematic drawings of electrical circuits and piping
  - Verification of alignment and cross sections
  - Changes in the location of equipment, etc.
- Finally, we will review and approve the as-built drawings to complete the project turnover and begin the warranty period.

### **BEST MANAGEMENT PRACTICES**

Our construction support services team is well-versed in National Pollutant Discharge Elimination System (NPDES) requirements and experienced in implementing best management practices. We will monitor the implementation, maintenance and any required modification of the approved Stormwater Pollution Prevention Plan (SWPPP) and Water Quality Management Plan (WQMP). In the event that the project specifications for developing the SWPPP or WQMP are inadequate and cannot support the project needs or meet current NPDES requirements, we will work closely with the design consultants to incorporate the required provisions into the project specifications to meet these goals. In addition, our team includes Qualified SWPPP Developers and Qualified SWPPP Practitioners.



# D. FIRM PROFILE + E. PRINCIPAL OFFICE LOCATION

## Firm Profile

NV5, Inc. has been providing engineering and consulting services to public and private sectors for **more than 70 years**, delivering solutions through six business verticals: Testing, Inspection and Consulting; Infrastructure; Utility Services; Environmental Health Sciences; Buildings and Program Management; and Geospatial Technology. With more than 100 offices nationwide and abroad — **including more than 20 offices in California** — NV5 has access to over **4,000 employees** (over 500 of which are located in Southern California) in a variety of fields who help clients plan, design, build, test, certify and operate projects that improve the communities where we live and work.

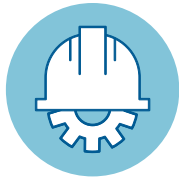
Our Southern California offices specialize in the project management, engineering design, construction management and inspection of capital improvement projects, including: streets, bridges, traffic systems, water and wastewater systems, drainage and flood control, parks and recreational facilities, vertical construction, and landscaping and grading. Our team includes licensed engineers in a variety of disciplines, licensed contractors, construction managers, certified inspectors and experienced public works professionals. All team members have extensive experience working within the structure of municipal government and public construction policy and will seamlessly integrate with the City's team.

## Key Services

The successful delivery of our products and services has resulted in repeat clients for a broad range of municipal projects. Our key services include:



PROJECT  
MANAGEMENT



CIVIL  
ENGINEERING  
DESIGN



CONSTRUCTION  
MANAGEMENT  
+ INSPECTION



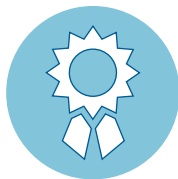
PLAN CHECK  
SERVICES



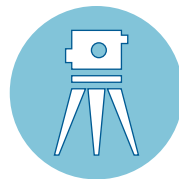
STAFF  
AUGMENTATION



WATER +  
WASTEWATER  
ENGINEERING



CONSTRUCTABILITY  
REVIEW



LAND SURVEY  
+ GIS



GEOTECHNICAL  
ENGINEERING



TRAFFIC  
ENGINEERING

We maintain an extensive history of working with various local agencies. Throughout the course of completing myriad public works capital improvement projects, our team has demonstrated an unparalleled ability to work well with local agency staff, project stakeholders, engineers and contractors. We have successfully delivered projects in a timely and cost-effective manner, and we have acquired a keen understanding of local agency requirements, a critical element in the facilitation and resolution of project issues. We are excited about the opportunity to continue to serve the City and are committed to maintaining effective working relationships with your staff, relevant government agencies and project stakeholders.

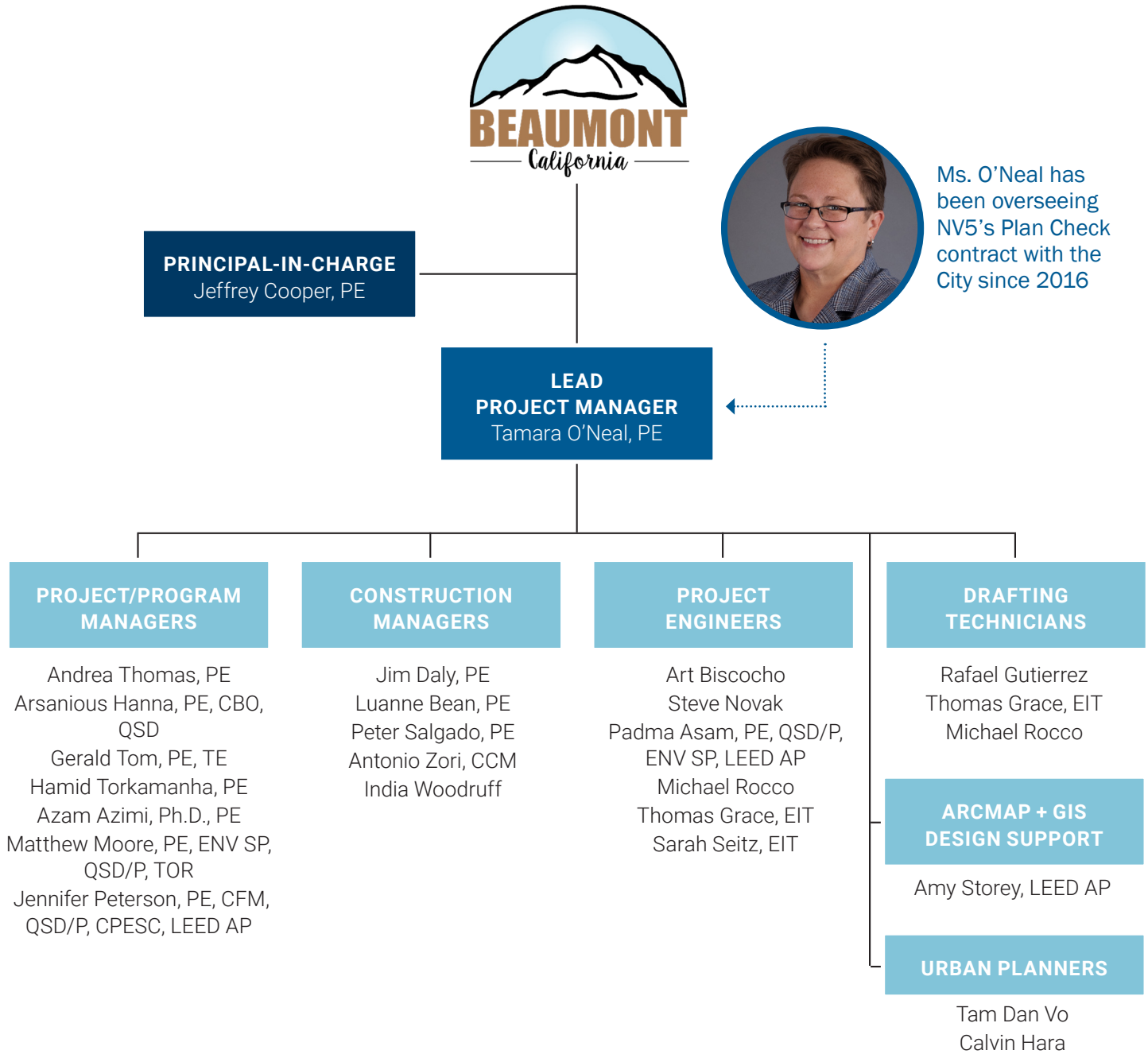
## Principal Office Location

Although a majority of the work for this contract will be performed out of our San Diego and Irvine offices, we also have established offices in the cities of Riverside and Palm Desert — a short drive to the City. Our team members have the ability to co-locate at our Palm Desert and Riverside offices while allowing for direct access to City projects.

# G. KEY PERSONNEL

## Organization Chart

Our team of experts bring direct, relevant, successful and current experience working on projects of similar scope and complexity. We are equipped with the resources to provide the City with the requested City Staff Augmentation and Project Management Services. Shown below are team roles and responsibilities. *Please see resumes in the Appendix for relevant project experience.*



## G. KEY PERSONNEL

### Summary of Skills

KEY PERSONNEL/ROLE	KEY PERSONNEL QUALIFICATIONS
<b>Tamara O’Neal, PE</b> Lead Project Manager	Ms. O’Neal has more than 27 years of experience in capital improvement and development review project management, sewer rehabilitation design and planning, stormwater quality regulatory, reporting and review services, asset management, floodplain development services and environmental restoration services. She will be the City’s main point of contact and will manage day-to-day operations.
<b>Andrea Thomas, PE</b> Project/Program Manager	Ms. Thomas has over 23 years of experience in the civil engineering field, including project management, construction management, payroll/project accounting, and labor and contract compliance.
<b>Arsanious Hanna, PE, CBO, QSD</b> Project/Program Manager	Mr. Hanna has more than 30 years of experience in public works and city engineering, including design, plan check, building and safety, project management, construction management and personnel/department management.
<b>Gerald Tom, PE, TE</b> Project/Program Manager	Mr. Tom has 35 years of experience in design, technical specifications preparation, construction management, and project management. He has extensive experience in project management from the planning and design phases and has held various positions at cities, for which he has managed capital improvement programs.
<b>Hamid Torkamanha, PE</b> Project/Program Manager	Mr. Torkamanha has more than 35 years of experience providing project design, project management, construction management and observations of various public works and land development projects. He is experienced in providing program management and coordination with various agencies.
<b>Azam Azimi, Ph.D., PE</b> Project/Program Manager	Mr. Azimi has 25-plus years of engineering experience including planning, design, construction management and field inspection of buildings and other infrastructure including bridges, culverts, retaining walls, highways, toll roads, transit, water and wastewater, and airports.
<b>Matthew Moore, PE, ENV SP, QSD/P, TOR</b> Project/Program Manager	Mr. Moore brings more than 28 years of experience in water resources, including hydrologic and hydraulic engineering design for flood control, drainage, green infrastructure, water quality, and erosion control facilities.
<b>Jennifer Peterson, PE, CFM, QSD/P, CPESC, LEED AP</b> Project/Program Manager	Ms. Peterson is an engineering manager with 27 years of focused experience working in the water resources field and managing stormwater projects – from the planning stages all the way through design and construction. She has managed stormwater programs for various agencies throughout the state.
<b>Jim Daly, PE</b> Construction Manager	Mr. Daly has more than 37 years of experience managing both horizontal and vertical capital improvement projects. As Assistant Deputy Director (Road Maintenance) for the County of Los Angeles, Mr. Daly managed approximately 500 employees responsible for the maintenance and repair of roadways, sidewalks, and parkway trees. He has experience managing myriad projects.
<b>Luanne Bean, PE</b> Construction Manager	Ms. Bean has more than 35 years of experience in the engineering, design, and construction of capital improvement projects. As a Registered Civil Engineer and a former Class A General Engineering Contractor, Ms. Bean has seen construction from both sides of the fence.
<b>Peter Salgado, PE</b> Construction Manager	With 25 years of experience, Mr. Salgado has managed and delivered a variety of public works projects, including street improvements, vertical construction and tenant improvements, parks and landscaping improvements, and water, sewer and storm drain improvements. Working with a variety of agencies, he is thoroughly familiar with local, state and federal procedures.



## G. KEY PERSONNEL

### Summary of Skills

KEY PERSONNEL/ROLE	KEY PERSONNEL QUALIFICATIONS
<b>Antonio Zori, CCM</b> Construction Manager	Mr. Zori is a results-oriented professional with more than 24 years of experience in managing public and private contracts. He is experienced in construction planning and scheduling, cost estimating, the bidding and procurement process, cost and production tracking, project financial control, contract negotiation, change orders and value engineering.
<b>India Woodruff</b> Construction Manager	Ms. Woodruff is a proactive, self-motivated Construction Manager who has managed at-risk projects throughout Southern California. She is experienced in Microsoft Office, Procore, Primavera P6, Microsoft Projects, AutoCad, and Revu Bluebeam. Her proven project management skills allow her to effectively interact with clients as well as construction trades.
<b>Art Biscocho</b> Project Engineer	Mr. Biscocho has more than 30 years of experience and has a demonstrated ability to manage multiple projects from planning to construction close-out.
<b>Steve Novak</b> Project Engineer	Mr. Novak has more than 25 years of experience in civil, environmental and geotechnical engineering. His expertise includes the conceptual planning, design and preparation of rough to precise grading plans; land use studies and preliminary engineering; street design; and water, sanitary sewer, street and storm drain plans.
<b>Padma Asam, PE, QSD/P, ENV SP, LEED AP</b> Project Engineer	Ms. Asam has over 16 years of design and development plan review experience. Her experience includes roadway widening and alignments, retaining walls, bridge abutments, pedestrian ramps and utility undergrounding.
<b>Michael Rocco</b> Project Engineer + Drafting Technician	Mr. Rocco is a Senior Civil Designer with more than 22 years of experience. He excels in the development of complete plan sets, effectively uses digital terrain model surfaces and field data provided by survey teams, and is able to review geotechnical data to assist with earthwork quantity calculations.
<b>Thomas Grace, EIT</b> Project Engineer + Drafting Technician	Mr. Grace is a registered Engineer-in-Training with over 24 years of experience specializing in hydrologic/hydraulic engineering for urban drainage facilities, flood control improvements, floodplain studies and water quality compliance documentation. His work includes preliminary and final engineering design phases, as well as SWPPP and SUSMP documentation.
<b>Sarah Seitz, EIT</b> Project Engineer	Ms. Seitz serves as both a plan check engineer and project engineer with over 2 years of experience in the field. She has provided as-needed/on-call plan check and civil engineering services to various municipalities across Southern California.
<b>Rafael Gutierrez</b> Drafting Technician	Mr. Gutierrez has more than 18 years of experience as a design engineer and is proficient in CAD and other design software.
<b>Amy Storey, LEED AP</b> ArcMap + GIS Design Support	Ms. Storey has been working as a Geographical Information Systems (GIS) Specialist in the NV5 GIS group for the past 21 years. She provides services that include geodatabase design, GIS web mapping and applications development, GIS analysis, data acquisition and conversion, project management through GIS MapBooks, as well as drafting and Civil3D experience.
<b>Tam Dan Vo</b> Urban Planner	Ms. Vo has 9 years of experience and is proficient in providing permit review services. She is knowledgeable in applying zoning and regulatory codes and has an understanding of environmental and planning laws and regulations.
<b>Calvin Hara</b> Urban Planner	Mr. Hara has three years of experience across multiple disciplines. His design experience, paired with his educational background and tenure as a physical planner, has given him a keen eye for plan review.

# H. REFERENCES

## References

Provided below are references of clients for whom City Staff Augmentation and Project Management Services have been performed that are comparable in quality and scope to that specified in this RFP.



### City Engineering & Extension of Staff Services

CITY OF BRAWLEY | BRAWLEY, CA

NV5 is providing City Engineering Services to the City, including serving as a senior point of contact for City staff, providing signatures as required, and overseeing department operations with the support of an on-site Deputy designated by the City. Additionally, NV5 is assisting the City in the development of City Standard Drawings, Design Specifications and Design Guidelines for capital improvement projects and new private development projects.

- ▶ **DATES:** MARCH 2023-CURRENT ▶ **KEY PERSONNEL:** TAMARA O'NEAL (PM, ACTING CITY ENGINEER), MICHAEL ROCCO, ANDREA THOMAS, JENNIFER PETERSON, PADMA ASAM, SARAH SEITZ, J BRALEY, KIRA BOWEN, JAMES MILLER
- ▶ **REFERENCE:** TYLER SALCIDO, CITY MANAGER, 383 MAIN ST., BRAWLEY, CA 92227, 760.351.3048, TSALCIDO@BRAWLEY-CA.GOV



### As-Needed Project Management Services for Various CIP

CITY OF EL MONTE | EL MONTE, CA

NV5 is providing Project Management Services to the City on various Capital Improvements Projects. Projects include the following:

- Cypress Avenue Emergency Project
- Staff Augmentation for Assistant Project Manager (India Woodruff)
- Active Transportation for El Monte Station and Downtown El Monte Project (CIP 890)
- Nevada MND Construction Monitoring Services (CIP 005)
- Miscellaneous Project Oversight for 2022, 2023 and 2024 (CIP 005 and CIP 890)
- Merced Avenue Traffic Calming Project (CIP 003)
- El Monte Regional Bicycle Commuter Access Improvement Project (CIP 016)
- Nevada-Bodger Sewer Improvements (CIP 005 and CIP 038)
- Santa Anita Active Transportation Program Cycle (CIP 890)

- ▶ **DATES:** DECEMBER 2020-CURRENT ▶ **KEY PERSONNEL:** LUANNE BEAN, INDIA WOODRUFF
- ▶ **REFERENCE:** LEE TORRES, PE, FORMER DPW/CITY ENGINEER (NOW DPW AT CITY OF PALMDALE), 38250 SIERRA HIGHWAY, PALMDALE, CA 93550, 661.267.5100, LTORRES@CITYOFPALMDALECA.GOV



### Project Close-out Services for Various City Projects

CITY OF MENIFEE | MENIFEE, CA

NV5 is providing project close-out services to the City for various projects that have applied for Acceptance of Public Improvements and Release/Reduction of Bonds. Services include the review of close-out documents and confirm completion of conditions of approval; review and process of project As-Builts; prepare acceptance packages and drafts of staff reports; coordinate with City Engineering, Planning, and other interdepartmental staff and developers for resolution of project status and outstanding items.

- ▶ **DATES:** 2024-CURRENT ▶ **KEY PERSONNEL:** TAMARA O'NEAL (PM), ANDREA THOMAS, TAM DAN VO, CALVIN HARA
- ▶ **REFERENCE:** STEVEN STRAPAC, ASSISTANT CITY ENGINEER, 29844 HAUN ROAD, MENIFEE, CA 92586, SSTRAPAC@CITYOFMENIFEE.US, 951.672.6777

## H. REFERENCES



### On-Call City Engineering (Staff Augmentation)

CITY OF LA HABRA HEIGHTS | LA HABRA HEIGHTS, CA

NV5 provides comprehensive engineering services to the City including assistance with project management, construction management and inspection, civil engineering design, NPDES, reviewing preliminary grading on planning applications, plan check applications, plan check for engineering and grading, review and approval of tentative and final tract maps, and other services typically provided to a municipality.

- ▶ **DATES:** 2014-CURRENT ▶ **KEY PERSONNEL:** JEFF COOPER (NV5 PM), GERALD TOM (CITY ENGINEER), MAHROOZ ILKHANIPOUR
- ▶ **REFERENCE:** RAFFERTY WOOLDRIDGE, CITY MANAGER, 1245 HACIENDA ROAD, LA HABRA HEIGHTS, CA 90631, 562.694.6302 EXT. 233, RWOOLDRIDGE@LHHCITY.ORG



### Project Management and Construction Management Services

CITY OF IRVINE | IRVINE, CA

Since 2013, our team has been providing the City with as-needed Project Management and Construction Management Services. Services include providing project managers and plan reviews to augment City staff including civil engineering design; street and park landscape design and rehabilitation design; project management; construction management; inspection services; landscape plan check; map plan check; hydrology and hydraulic check; and street improvement plan check. Projects Included:

- **Project Management Services for CIP:** Provided a full-time Project Manager as an extension of City Staff to assist the City with managing its many CIP projects with the goal of maintaining and improving the City's facilities.
  - **William Woollett Jr. Aquatics Center:** Project Management, Construction Management and Inspection Services for pool re-plastering project (three pools) at the William Woollett Jr. Aquatics Center.
  - **Heritage Park Community Center Exterior Rehab and Painting:** Project Management and Design Engineering Services for the exterior rehabilitation and painting of the Heritage Park Community Center, the Metal Maintenance Building, and the Fine Arts Center.
  - **Adventure Playground:** Project Management, Construction Management and Inspection Services on the rehabilitation project to update the playground area and amenities that comply with existing playground safety standards.
  - **Quail Hill Community Center:** Constructability review of a new 12,500-square-foot community center including a park, exercise equipment, and gardens.
  - **Oak Creek Community Center:** Constructability review of a new 6,000-square-foot community center including new parking and sports space.
  - Building & Safety Inspections and Plan Review
- ▶ **DATES:** 2013-CURRENT ▶ **KEY PERSONNEL:** LUANNE BEAN, PETER SALGADO, INDIA WOODRUFF, FARID ASKARI, RAFAEL GUTIERREZ
  - ▶ **REFERENCE:** MICHAEL COURTNEY, PUBLIC WORKS ADMINISTRATOR, 6427 OAK CANYON, IRVINE, CA 92618, 949.724.8209, MCOURTNEY@CITYOFIRVINE.ORG



### City Engineering Services (Staff Augmentation)

CITY OF VILLA PARK | VILLA PARK, CA

NV5 serves as the City Engineer and Traffic Engineer and provides the City with all civil and traffic engineering design services. We provide a wide range of general engineering services, including City Engineering and Project Management. Services include plan checking; developing, reviewing, and modifying civil engineering plans, designs and specifications for public works projects; implementing modern methods and techniques used in the design and construction of a wide variety of municipal projects; providing construction management and inspection services for a broad range of municipal public works projects; federal funding administration; and technical report writing.

- ▶ **DATES:** 2011-CURRENT ▶ **KEY PERSONNEL:** JEFF COOPER (NV5 PM), MAHROOZ ILKHANIPOUR, HAMID TORKAMANHA
- ▶ **REFERENCE:** STEVE FRANKS, CITY MANAGER, 17855 SANTIAGO BOULEVARD, VILLA PARK, CA 92861, 714.998.1500, SFRANKS@VILLAPARK.ORG



## H. REFERENCES



### Margarita Recreation Center

CITY OF TEMECULA | TEMECULA, CA

NV5 provided Owner's Representative/Project Management Services for the reconstruction of the Margarita Recreation Center. This Design-Build (DB) project demolished the existing facility and replaced it with a new 8,500-square-foot building and 25-yard outdoor pool. As part of its services, NV5 provided preliminary engineering and geotechnical design, project management, construction management, resident inspection, geotechnical and materials testing and deputy inspection, and environmental and land surveying. In concert with City staff, NV5 prepared the design bridging documents and the DB Request for Proposal and assisted the City with the DB contract Advertising and Award process. NV5's Bridging Documents and Design Guidelines included schematic designs and technical specifications for Architectural, Civil, Geotechnical, Structural, Mechanical and Electrical improvements, as well as a detailed project estimate. NV5 oversaw the design during the various stages to assure that the requirements of the contractual Bridging Documents were met.

- ▶ **DATES:** FEBRUARY 2019-MARCH 2024 ▶ **KEY PERSONNEL:** PETER SALGADO (PM), JIM TRAMMELL (PM/CM), MIKE HELMA (INSPECTOR), NV5 DESIGN (DAVID NIKNAFS, STEVE NOVAK, ART BISCOCHO), NV5 GEOTECH, NV5 SURVEY, NV5 ENVIRONMENTAL
- ▶ **REFERENCE:** NINO ABAD, PE, ASSOCIATE CIVIL ENGINEER, 41000 MAIN STREET, TEMECULA, CA 92590, 951.308.6385, NINO.ABAD@TEMECULACA.GOV



### Program Management & Construction Management Services

CITY OF POMONA | POMONA, CA

NV5 provides program management and construction management services to the City as extension of City Staff. One of the projects for which we provided these services is the 2-acre Phil and Nell Soto Park in the historic district of Wilton Heights. The \$2.4M passive park includes bioswales, precast concrete play elements, a wooden gazebo, three wood/steel bridges, low-water and drought-tolerant plantings, and a citrus tree grove. Services included coordinating with grant funding agencies to stay within the grant parameters on this project. Project management services included managing the selection of consultants and contractors, preparing staff reports to award contracts, preparing progress updates, tracking project budgets, forecasting project costs, and preparing construction and consultant contracts. Construction management services included preparing weekly progress reports, conducting biweekly construction meetings, reviewing and approving contractor invoices, determining and negotiating the cost for additional work, maintaining the project schedule, and tracking costs within the budget text.

- ▶ **DATES:** OCTOBER 2017-AUGUST 2020 ▶ **KEY PERSONNEL:** PETER SALGADO (PM) ▶ **REFERENCE:** MATT PILARZ, SENIOR ENGINEER, 505 S. GAREY AVE., POMONA, CA, 91769, 909.620.3652, MATT\_PILARZ@CI.POMONA.CA.US



### On-Call City Engineering/Plan Check Services

CITY OF IMPERIAL BEACH | IMPERIAL BEACH, CA

NV5 has been providing city engineering and plan check services for this community since 2015. The suite of services consists of three major elements: city engineer services, plan check/development review, and design and management of capital projects. Since contract inception, NV5 has provided engineering review of all site civil and public improvement plans submitted for City permitting. NV5 has also reviewed and signed all subdivision maps and other similar documents as City Engineer and City Surveyor. Our team also provides City Engineering and extension of staff services on a variety of projects through the design and administration of capital improvement projects, grant application and administration services, ADA evaluation and improvements, local drainage improvements, structural assessment services, coastal engineering, and water quality support services.

- ▶ **DATES:** 2015-CURRENT ▶ **KEY PERSONNEL:** TAMARA O'NEAL (PROJECT MANAGER/CONTRACT CITY ENGINEER), JENNIFER PETERSON (STORMWATER PM), THOMAS GRACE (ENGINEER), ANDREA THOMAS (ENGINEER), MICHAEL ROCCO (ENGINEER), JENNIFER PETERSON (ENGINEER), PADMA ASAM (ENGINEER)
- ▶ **REFERENCE:** JUAN LARIOS, PUBLIC WORKS DIRECTOR, 825 IMPERIAL BEACH BLVD., IMPERIAL BEACH, CA 91932, 619.424.2214, JLARIOS@IMPERIALBEACHCA.GOV

# I. SCOPE OF SERVICES

## Scope of Services

### City Staff Augmentation:

City Staff Augmentation Services may include, but not be limited to the following services:

- Providing both in-house and remote engineering services and acting as an extension of city staff in support of the City's Capital Improvement Program (CIP)
- Providing Project / Program Management Services as described in detail in this Scope of Services
- Providing Construction Management Services as described in detail in this Scope of Services
- Assisting in the preparation of Staff Reports related to City projects, and preparing items for presentation to City Council
- Providing Auto CAD and drafting services related to the design of CIP projects
- Providing Design support in ArcMap and GIS related to the design of CIP projects
- Coordination and interaction with City Staff in multiple departments towards the completion of CIP projects
- Providing regular project updates related to assigned projects

### (PM) Project/Program Management:

PM services may include any or all phases of a project including, but not limited to: provide project management support to City Staff for various projects.

Consultant must be proactive and knowledgeable of all regulations required for project acceptance. Consultant shall be an advisor, advocate, and produce a product with the best interest intended for the City within the required schedule and budget.

All work shall be done in conformance with applicable City, State, and Federal laws, latest versions of the City Municipal Codes, County of Riverside Ordinances 460 and 461, Riverside County Flood Control design standards and drainage manual, Caltrans manuals and policies, Caltrans Standard Plans and Specifications, APWA Standard Specifications for Public Works Construction "Greenbook," Manual on Uniform Traffic Control Devices, California Building Codes, and all other required regulations. All contract documents shall be prepared under the responsible direction and supervision of appropriate state licensed/registered professionals.



Consultant shall provide all related services including, but not limited to, the following:

- Developing Request for Proposals (RFPs)
- Participate in procurement, selection and contract negotiation processes, and provide contract management of engineering design and other CIP project contracts.
- Project scoping during the planning or preliminary design phase.
- Working with the Design Professional to Secure necessary right-of-way, easements, and/or grading permits required for projects.
- Preparation and acquisition of any required permits, including Caltrans, Edison, and UPRR Permits
- Working with the Design Professional in the Preparation of project plans and specifications for bidding; conducting pre-bid meetings, as needed; preparation of addendums to bid documents; and attending bid openings.
- Review of Project Design plans and specification at the various levels of design, including 30%, 60%, 90%, and final bid document review.
- Identifying project stakeholders, both internal to the City and external, and engaging with them throughout the planning, design, and construction phases of the project as necessary.
- Planning, conducting, and/or providing support/

# I. SCOPE OF SERVICES

information to staff for public engagement meetings, as needed.

- Coordination with other City departments, local agencies, private utility companies, consultants, and members of the public, as needed.
- Coordination with Survey Professionals
- Working with Environmental Professionals to complete CEQA and NEPA processes during design. Reviewing Technical studies and providing feedback to the Environmental Professional and the City.
- Provide support for issues associated with the Transportation Uniform Mitigation Fee (TUMF) Program.
- Managing design consultants throughout the planning, preliminary design, and bidding processes.
- Attending community outreach meetings
- Reviewing consultant invoices
- Maintaining project records
- Other tasks as assigned

## **(CM) Construction Management:**

CM services may include any or all phases of a project including, but not limited to: Managing the Construction Contractor, Design Profession, and Construction Support Services throughout construction; review of drawings and specifications, estimates, value engineering alternatives, and other professional services.

Consultant must be proactive and knowledgeable of all regulations required for project acceptance. Consultant shall be an advisor, advocate, and produce a product with the best interest intended for the City within the required schedule and budget.



All work shall be done in conformance with applicable City, State, and Federal laws, latest versions of the City Municipal Codes, County of Riverside Ordinances 460 and 461, Riverside County Flood Control design standards and drainage manual, Caltrans manuals and policies, Caltrans Standard Plans and Specifications, APWA Standard Specifications for Public Works Construction “Greenbook,” Manual on Uniform Traffic Control Devices, California Building Codes, and all other required regulations. All contract documents shall be prepared under the responsible direction and supervision of appropriate state licensed/registered professionals.

Consultant shall provide all related services including, but not limited to, the following:

- Serve throughout the project’s life cycle as the Project Manager, including through the pre- and post-construction closeout processes.
- Conduct an initial assessment of the project requirements, goals, and constraints.
- Review the final contract between the owner and Contractor(s).
- Knowledge of plans and specifications and the contractor’s operations.
- Provide status report updates to the City summarizing progress and coordinate with the Principal Engineer for the City.
- Attend weekly construction meetings and be the point of contact for all assigned projects;
- Assist the Design Professional throughout the entire project cycle, final inspections, and Project acceptance phase;
- Report to the Principal Engineer, who is the person designated by the City to manage the projects and coordinate changes in the contract;
- Maintain an effective working relationship with the Contractor, the Design Professional, the Inspectors, and interested parties to safeguard the interests of the City;
- Ensure adherence to the intent of the contract documents;
- Review and inspect work and materials in a timely manner to avoid, as much as possible, disruption to the schedule or work already in place; weekly communication with the construction team to anticipate potential issues and reduce risk and delays
- Provide quality control of work, materials, and



# I. SCOPE OF SERVICES

equipment, and report to the Construction Administrator work that is substandard and/or which does not meet the intent of governing code, law, rule, and/or regulation;

- Rely on the Design Professional to solve technical problems arising during construction; and advise the Principal Engineer and design professional of circumstances surrounding requested changes in the work;
- Schedule and coordinate inspections with 3rd party Inspection firms for material testing and inspection if the project requires;
- Provide and maintain on-site representation as required on behalf of the City to attend progress meetings during the construction period, including but not limited to inspection of work in place to verify conformance to the plans, specifications, and applicable building codes;
- Monitor the progress of the Contractor submittals and keep copies of all items, including correspondence, requests for information, shop drawings, payment requests, change proposals, change orders, etc.
- Be aware and keep a record of project activities detailing weather, project manpower, equipment, material/equipment deliveries, general description of work performed and its location, pay items, problem areas, site visitors, testing activities, and all instructions or directives given or received;
- Manage measures to remedy any deviations, defects, or deficiencies observed in the work. Prevent installation of any related work until shop drawings have received final approval from the design professional;
- Monitor the preparation and maintenance of record (“as-built”) drawings by the contractor during the course of the work;



- Record the design professional’s or his/her consultant’s verbal instructions during field supervision trips and make sure they are documented;
- Monitor submittal log to ensure submittals and resubmittals are approved in a timely manner. Prevent installation of any related work until submittal items, including any shop drawings, have received final approval from the Design Professional;
- Samples: In coordination with the Inspector or Record, accept samples at the job site. Record the date received and from whom. Notify the Design Professional and Project Manager that samples are ready for examination. Record the Design Professional’s approval or rejection. Maintain custody of approved samples at the job site;
- Preparation and submittal of all documents necessary for coordination, approvals, funding reimbursements and reporting to State and Federal funding agencies.
- Other tasks as assigned

## K. ADDITIONAL INFORMATION + L. INSURANCE

### Additional Information

N/A.

### Statement of License and Insurance

NV5 will have an active City of Beaumont Business License and the required insurance coverage in force at the time of contract execution.

# APPENDIX



## CONTACT INFO

tamara.oneal@nv5.com

## EXPERIENCE

28 years

## EDUCATION

B.S. Civil Engineering

## LICENSES/ CERTIFICATES

Civil Engineer (CA)  
No. 69107

## TAMARA O'NEAL, PE

### Lead Project Manager

Ms. O'Neal has more than 28 years of experience in municipal and private engineering services, including capital improvement and development review project management, sewer rehabilitation design and planning, stormwater quality regulatory, reporting and review services, asset management, floodplain development services and environmental restoration services. In addition to having direct public agency employment experience, Ms. O'Neal has provided extension of staff services on a consultant basis for numerous cities, as well as water and sanitation districts in San Diego, Orange and Los Angeles counties.

## Project Experience

### On-Call Plan Check + Public Works Inspection Services

CITY OF BEAUMONT | BEAUMONT, CA

**Project Manager.** Ms. O'Neal is providing the City with review of as-needed private development projects and public works inspection services. Reviews include improvement, sewer and storm drain plans, hydrology and hydraulic reports, water quality reports, geotechnical reports, structural calculations and cost estimates. NV5 is assisting the City with the development of checklists, standard notes, unit price lists and other documents to standardize and streamline the review/inspection process.

### City Engineering & Extension of Staff Services

CITY OF BRAWLEY | BRAWLEY, CA

**Acting City Engineer.** Ms. O'Neal is providing city engineering services to the City, including serving as a senior point of contact for city staff, providing signatures as required, and overseeing department operations with the support of an on-site Deputy designated by the City. Additionally, NV5 is assisting the City in the development of City Standard Drawings, Design Specifications and Design Guidelines for capital improvement projects and new private development projects.

### City Engineering Services

CITY OF DEL MAR | DEL MAR, CA

**Engineering Development Review Manager.** Ms. O'Neal served as an extension of the City's staff in reviewing proposed development projects, preparing conditions of approval and providing project coordination services and plan check reviews for conformance with City standards and project conditions. She was responsible for ensuring compliance with the City's Clean Water Program and performing construction inspections. She assisted with preparation of the City Engineering long- and short-term Capital Improvement Program and preparation of the associated two- and five-year City budgets. She represented the City Engineering department at regional transportation and Clean Water technical working groups. She prepared staff reports, resolutions, ordinances, and compliance reporting documents for satisfaction of a variety of State mandates. She also provided technical support at City management and community outreach meetings, and was instrumental in the preparation of the City's Clean Water compliance reporting documents and program implementation. She represented City Engineering staff in coordinating with City residents and local development professionals on a wide variety of issues and requests for assistance.





## F. RESUMES

### Interim City Engineer/Associate Engineer

CITY OF LEMON GROVE | LEMON GROVE, CA

**Acting City Engineer.** Ms. O'Neal was the only staff-level civil engineer at the City of Lemon Grove, active in all aspects of Engineering Department operations. She was responsible for supervision of staff, representation at City Council meetings, and management of multiple capital improvement and land development projects, including the review of drawings, maps, plans, specifications, estimates and reports relating to a variety of private and public construction projects. She prepared correspondence, managed subconsultants and assisted technicians and field staff as needed. She conferred with other City personnel, representatives of public and private agencies and the public regarding problems, projects and complaints.

### Capital Improvement Projects

CITIES OF DEL MAR, DANA POINT, IMPERIAL BEACH, CHULA VISTA, ENCINITAS, LEMON GROVE, VISTA, ESCONDIDO, SAN DIEGO | SOUTHERN CALIFORNIA

Ms. O'Neal has served as extension of staff for many local agency engineering departments. Her responsibilities have included assisting with project design and contract administration for Capital Improvement Programs. Representative projects have included pavement management, facilities improvements, ADA assessment and design, Master Plan updates and storm drain improvements, sewer repair, traffic calming, open space and roadway beautification, and park, sidewalk and storm drain design. She has represented agency clients on numerous regional technical committees and coordinated with local and state agencies for Capital Improvement Project programming, funding and reporting purposes.

### Plan Check Services

CITY OF DESERT HOT SPRINGS | DESERT HOT SPRINGS, CA

**Project Manager.** Ms. O'Neal is overseeing the team providing on-call engineering plan check services. Services include the review of grading and improvement plans, hydrology and hydraulic reports, geotechnical reports, water quality treatment and erosion control, title documents and review against project conditions of approval for residential, commercial and industrial development applications.

### On-Call Plan Check Services

CITY OF MENIFEE | MENIFEE, CA

**Project Manager.** Ms. O'Neal was the project manager on two contracts awarded by the City of Menifee to support development review and to provide design of capital projects. NV5 was retained to work with City staff in reviewing development projects for conformance to City codes and other development standards. NV5 is also providing design of a new bridge on Bradley Road to replace an existing low flow crossing at Salt Creek channel that causes a roadway closure even in light rain events.

### On-Call Civil & Water Quality Management Plan Check Services

COUNTY OF SAN BERNARDINO | SAN BERNARDINO, CA

Ms. O'Neal is providing engineering development review services for a variety of projects ranging from single-family development to large, multi-phase subdivisions and commercial projects with significant public infrastructure requirements. NV5 reviewed Hydraulic and Hydrologic Analysis, Water Quality Management Plans (WQMPs), erosion control plans, soils reports, private grading and public improvement plans for conformance with project conditions of approval and compliance with County requirements.

### Plan Check of Water Quality Management Plan Hydrology Reports and Plan Check Services

COUNTY OF RIVERSIDE TRANSPORTATION DEPARTMENT | RIVERSIDE, CA

**Project Manager.** Ms. O'Neal serves as the Project Manager overseeing plan checking of WQMP (Water Quality Management Plan) and Hydrology Reports associated with new development and redevelopment projects, and plan check services for private development projects for compliance with the county's MS4 permits and the Riverside County WQMP for Urban Runoff. Review of P-WQMPs, F-WQMPs, Hydraulic and Hydrology reports, floodplain studies, and grading plans.

# F. RESUMES

## CONTACT INFO

andrea.thomas@nv5.com

## EXPERIENCE

23 years

## EDUCATION

M.S. Civil Engineering

B.S. Civil Engineering

## LICENSES/ CERTIFICATES

Civil Engineer (CA)

No. 68926

## AFFILIATIONS

American Society of Civil Engineers

WaterReuse San Diego and Inland Empire Chapters

## ANDREA THOMAS, PE

### Project/Program Manager

Ms. Thomas has over 23 years of experience in the civil engineering field, including project management, construction management, customer service, payroll/project accounting, and labor and contract compliance.

### Project Experience

#### On-Call Plan Check + Public Works Inspection Services

CITY OF BEAUMONT | BEAUMONT, CA

**Plan Check Engineer.** Ms. Thomas is part of the team providing review of private and public works development projects, as well as public works inspection services to the City. Our team reviews a variety of development applications — from several thousand lots, multiphase planned residential developments to proposed floodplain development and structural review of bridges. Reviews include improvement, grading, and erosion control plans, sewer and storm drain plans, hydrology and hydraulic reports, water quality reports, geotechnical reports, structural calculations, and cost estimates. NV5 has also been providing stormwater management support for construction, MS4, and Industrial permits as staff extension to the City.

#### Project Management, Construction Management & Inspection Services

CITY OF POWAY | POWAY, CA

Ms. Thomas' responsibilities included maintaining responsible charge of approximately 50 Capital Improvement projects during all phases of a project life cycle, managing and maintaining productive working relationships across departments to productively include all stakeholders, and setting up procedures and creating training materials in support of Virtual Project Management software for department use on all capital projects. She also prepared and delivered presentations to City Council in support of resolution adoptions, contract awards, project acceptance, and funding requests. Ms. Thomas also managed multiple construction projects concurrently, including field inspections, RFIs, and change orders, coordinated and delivered the design, contract negotiations, contracts, and construction of Poway's Annual Pavement Management Program. The program coordinates separate, concurrent, and time-constrained construction contracts for asphalt repair, slurry coating, and striping improvements.

#### Engineering and Capital Improvement Projects

CITY OF SAN DIEGO | SAN DIEGO, CA

**Associate Civil Engineer.** Ms. Thomas was responsible for managing federal grant projects citywide from allocation to completed construction, reviewing and evaluating plans for tenant improvements, ADA improvements, and grant applications. She also prepared RFPs, specifications and bid advertisements, coordinated environmental permit processes and funding documents on behalf of grant awardees for City Council approval, and reviewed projects in progress for emerging stormwater regulation and compliance with SWPPPs and BMPs.



# F. RESUMES

## CONTACT INFO

arsanious.hanna  
@nv5.com

## EXPERIENCE

30+ years

## EDUCATION

B.S. Civil Engineering

## LICENSES/ CERTIFICATES

Civil Engineer (CA)  
No. 70743

Civil Engineer (CO)  
No. 0061094

Civil Engineer (AZ)  
No. 38772

Civil Engineer (TX)  
No. 142591

ICC Certified Building  
Official

ICC Certified Building  
Plans Examiner

QSD

CA Safety Assessment  
Coordinator (SAP)

## AFFILIATIONS

American Public Works  
Association (APWA)

American Society of Civil  
Engineers (ASCE)

California Building Officials  
(CALBO)

International Code Council  
(ICC)



## ARSANIOUS HANNA, PE, CBO, QSD

### Project/Program Manager

Mr. Hanna has more than 30 years of experience in public works and city engineering, including design, plan check, building and safety, project management, construction management and personnel management from the planning and design phases through construction. He has held various positions at public agencies, including five years at the City of Irwindale and more than 17 years at the County of Los Angeles Public Works Department. He has managed capital improvement programs, reviewed and approved plans and managed construction of contract work for compliance with plans and specifications.

### Project Experience

#### Engineering Director, City Engineer and Building Official

CITY OF IRWINDALE | IRWINDALE, CA

**Engineering Director.** Mr. Hanna oversaw the City's Public Works engineering operations. His responsibilities included providing full responsibility for all Public Works Department services and activities, including engineering services, new development service, capital improvement projects, traffic engineering, mining operation, building and safety and assessment districts. He provided full management responsibility for all engineering activities, including Citywide engineering, right-of-way acquisition, public infrastructure, Capital Improvement Program design, public works construction, construction management, project inspection, and contract management. Mr. Hanna managed the development and implementation of departmental short- and long-term goals, objectives, and priorities for each assigned service area; recommended and administered policies and procedures.

#### Senior Plan Check Engineer

LOS ANGELES COUNTY PUBLIC WORKS, BUILDING & SAFETY DIVISION | ALHAMBRA, CA

**Senior Plan Check Engineer.** Mr. Hanna provided senior-level management and plan check services to the County's Building & Safety Division. Los Angeles County Public Works is one of the largest municipal public works agencies in the United States. His responsibilities included planning, organizing, assigning and directing staff and programs. He assisted the CBO by preparing, updating, and recommending new building standards. He coordinated various agencies or departments in the permit application process and managed City/County contractors and building code enforcement personnel to provide corrective actions for building code violations.

#### On-Call Civil & Water Quality Management Plan Check Services

COUNTY OF SAN BERNARDINO | SAN BERNARDINO COUNTY, CA

**Plan Check Engineer.** Mr. Hanna is part of the NV5 team that is providing engineering development review services for a variety of projects ranging from single-family development to large, multi-phase subdivisions and commercial projects with significant public infrastructure requirements. NV5 reviews Hydraulic and Hydrologic Analysis, Water Quality Management Plans (WQMPs), erosion control plans, soils reports, private grading and public improvement plans for conformance with project conditions of approval and compliance with County requirements.

## CONTACT INFO

gerald.tom@nv5.com

## EXPERIENCE

35 years

## EDUCATION

B.S. Civil Engineering

## LICENSES/ CERTIFICATES

Civil Engineer (CA)

No. 51209

Traffic Engineer (CA)

No. 2541

## GERALD TOM, PE, TE

### Project/Program Manager

Mr. Tom has 35 years of progressive experience in design, technical specifications preparation, construction management, project management and personnel management. He has a thorough understanding of project management from the planning and design phases through the construction phase. His tasks have included preparing schedules, project budgets and materials and labor specifications, as well as coordinating with multiple stakeholders. He has held various positions at cities, for which he has managed capital improvement programs, reviewed and approved plans and managed construction of contract work for compliance with plans and specifications.

### Project Experience

#### City Engineering (Staff Augmentation)

CITY OF LAGUNA WOODS | LAGUNA WOODS, CA

**City Engineer/Traffic Engineer.** Mr. Tom and our team provide traffic and general engineering services on an as-needed basis. Services include: conducting and reviewing traffic engineering, traffic analysis, and transportation planning studies; providing analysis of existing and projected traffic conditions; providing electronic traffic control device studies and design; performing pedestrian studies; plan check services; and reviewing new development projects involving traffic impact analysis, modeling, and road impact fee analyses.

#### On-Call City Engineering (Staff Augmentation)

CITY OF LA HABRA HEIGHTS | LA HABRA HEIGHTS, CA

**City Engineer.** Mr. Tom and our team provide comprehensive engineering services for assistance with project management, construction management and inspection, civil engineering design, NPDES, reviewing preliminary grading on planning applications, plan check applications, plan check for engineering and grading, review and approval of tentative and final tract maps, and other services typically provided to a municipality. Mr. Tom also provides plan check services for all City plan reviews.

#### Senior Civil Engineer

CITY OF GLENDALE PUBLIC WORKS, TRAFFIC AND TRANSPORTATION DIVISION | GLENDALE, CA

**Senior Civil Engineer.** As Senior Civil Engineer, Mr. Tom's duties included:

- Managing the Traffic and Transportation Capital Improvement Program. Projects included Traffic Signal Improvements, Street Improvements involving signing and striping improvements, At-Grade Railroad Crossing Improvements, Intelligent Traffic System Improvements, Pedestrian Improvements, and Safe Routes to Schools
- Preparing schedules, project budgets, and specifications for materials and labor
- Drafting and reviewing reports and specifications, including construction schedules, environmental impact studies and project designs
- Evaluating transportation systems and traffic control devices to determine need for modification
- Coordinating with contractors, utility companies, and government agencies to implement projects





## CONTACT INFO

hamid.torkamanha  
@nv5.com

## EXPERIENCE

35 years

## EDUCATION

M.S. Civil Engineering/  
Water Resources

B.S. Civil Engineering

## LICENSES/ CERTIFICATES

Civil Engineer (CA)  
No. 49805

Caltrans Value Engineering  
Workshop

Caltrans Project  
Engineering Academy

OCTA Project Manager  
Academy

Intergraph and In-Road  
Workshop

## HAMID TORKAMANHA, PE

### Project/Program Manager

Mr. Torkamanha has more than 35 years of experience providing project design, project management, construction observation and construction management of various public works and land development projects, with a focus on transportation projects. He is experienced in providing program management and coordination with various agencies; preparing and monitoring budgets and schedules; and providing leadership, training and supervision to professional and technical staff.

### Project Experience

#### City Engineering (Staff Augmentation)

CITY OF VILLA PARK | VILLA PARK, CA

**City Engineer.** Mr. Torkamanha is serving as a consultant City Engineer for the City of Villa Park. NV5 plays a role in helping the City Council and City Staff make appropriate decisions regarding City infrastructure. We provide a wide range of general engineering services, including: plan checking; developing, reviewing, and modifying engineering plans, designs and specifications for public works projects; implementing modern methods and techniques used in the design and construction of a variety of projects; providing construction management and inspection for a broad range of municipal public works projects; federal funding administration; and technical report writing.

#### Project Management Services

ORANGE COUNTY TRANSPORTATION AUTHORITY | ORANGE, CA

**Senior Project Manager III.** Mr. Torkamanha managed and coordinated transportation projects through planning, funding, environmental, design and construction. He provided program management and coordination with FHWA, Caltrans, state, and local governmental agencies. He oversaw multiple consultants while maintaining quality control over the process and keeping the projects on schedule and within budget. He ensured appropriate allocation of project cost, completion of milestones, and changes to project scope in accordance with budget and funding availability. He attended meetings and conducted presentations for various agencies and public organizations on behalf of OCTA. Other duties included preparing cooperative agreements with Caltrans and other local agencies; and providing support in developing public outreach plans.

#### Senior Civil Engineer

CITY OF SANTA ANA | SANTA ANA, CA

**Senior Civil Engineer.** Mr. Torkamanha managed and supervised engineering staff to prepare plans and specifications for public works projects. He reviewed plans and specifications prepared by staff and consultants. He also assisted in the preparation and monitoring of the Engineering Division's budget and assisted in the development of Engineering Division policies and administrative procedures. Representative projects include:

- Managing design of Local Street Improvements(\$100M/Year)
- Managing design of intersection widening for Dyer Road and Grand Avenue, Bristol Street and Warner Avenue (\$5.5M)
- Managing design of Flower Street Bike Trail (\$1.6M)
- Managing design of McFadden Avenue from Standard Avenue to Maple Street (\$1.3M)



## EXPERIENCE

25+ years

## EDUCATION

Ph.D. Civil Engineering

M.S. Structural Engineering

B.S. Civil Engineering

## LICENSES/ CERTIFICATES

Civil Engineer (NC)  
No. 022555

OSHA Certifications

Contract Officer Technical Representative (COTR) Certifications

## AFFILIATIONS

American Society of Civil Engineers (ASCE)

American Society of Highway Engineers (ASHE)



## AZAM M. AZIMI, PH.D., PE

### Project/Program Manager

Mr. Azimi has 25-plus years of engineering experience including planning, design, construction management and field inspection of buildings and other infrastructure including bridges, culverts, retaining walls, highways, toll roads, transit, water and wastewater, and airports. He has extensive experience with contract management, project management, program management, constructability, and value engineering. Mr. Azimi also has experience in safety, health, and environment compliance; SWPPP; and environmental remediation. He is well versed in coordination with clients, contractors, Caltrans, and other stakeholders. He is fluent in English, Japanese, Persian, and some Arabic.

### Project Experience

#### Project Management Services for CIP

CITY OF IRVINE | IRVINE, CA

**Project Manager.** Mr. Azimi served as full-time Project Manager as an extension of City Staff to assist the City with managing its many CIP projects with the goal of maintaining and improving the City's facilities. Tasks included writing Requests for Proposals to acquire engineering and construction management services, assisting the City with the bidding and award of construction projects, assisting with Staff Reports, and overseeing and developing projects throughout the City under the direction of, and reporting directly to, the City.

#### California High Speed Rail

ARCADIS | CALIFORNIA

**Senior Construction Manager.** Mr. Azimi worked on the California High Speed Rail, a mega project of over \$3B involving design-build. The project extends more than 65 miles in California's Central Valley. It includes 33 grade separations including viaducts, culverts, retaining walls underpasses, and overpasses. The project is subject to the oversight requirements of the Federal Railroad Administration. His responsibilities included: coordinating and managing people, materials, and equipment as well as ensuring the contractor's compliance with the client's safety policies and conducting safety assessments as required by the client; overseeing coordination with project staff to outline work plans, assign duties, responsibilities, and scope of authority; as the lead construction manager, interfacing with the client, program manager, design-builder, and numerous third parties.

#### Green Tree Boulevard Extension

VICTORVILLE, CA

**Senior Resident Engineer/Construction Manager.** Mr. Azimi was responsible for construction and overall contract quality management oversight, staff training and supervision, administration, CPI, risk and issue managements, and coordination with all stakeholders of Green Tree Boulevard Extension project in Victorville, Calif. The project included roadway, culverts, a retaining wall and a post-tension pre-stressed box girder bridge. He oversaw the field inspections, regularly met with the contractor and maintained accurate, clear, and complete reports and detailed records. Mr. Azimi reviewed, commented, and processed the construction plans, RFI, NCR, and submittals, and he provided other field construction inspection as needed.

## F. RESUMES

### CONTACT INFO

matthew.moore@nv5.com

### EXPERIENCE

28 years

### EDUCATION

M.S. Civil Engineering

B.S. Civil Engineering

### LICENSES/ CERTIFICATES

Civil Engineer (CA)

No. 56780

Envision Sustainability

Professional (CA)

No. 10891

Qualified SWPPP

Developer/Qualified

SWPPP Practitioner

No. 00046 (CASQA)

Trainer of Record for QSD/

QSP No. 00046

### AFFILIATIONS

American Society of Civil  
Engineers

## MATTHEW MOORE, PE, ENV SP, QSD/P, TOR

### Project/Program Manager

Mr. Moore brings more than 28 years of experience in water resources, including hydrologic and hydraulic engineering design for flood control, drainage, green infrastructure, water quality, and erosion control facilities. His work includes FEMA Flood Insurance Rate Map letters of map amendment/revision (LOMA/R) review for FEMA and preparation of floodplain studies and LOMRs for developers and municipalities. He has extensive experience in hydrologic and hydraulic analyses, including preparation of storm drainage plans and stormwater quality best management practices (BMP) design and documentation. Mr. Moore served on the technical advisory committee for the development of the first San Diego County LID Manual and the San Diego County Hydrology Manual update.

### Project Experience

#### Lake Drive Storm Drain Improvements

CITY OF ENCINITAS | ENCINITAS, CA

**Technical Design Lead.** Mr. Moore is providing technical oversight and direction on the preparation of final design Plans, Specifications, and Estimate (PS&E) for this project, which consists of removal and replacement of approximately 2,000 LF of existing 48-inch Corrugated Metal Pipe (CMP) and associated appurtenances from the curb inlet along Lake Drive west through the canyon to I-5 (just before crossing under the freeway). The existing improvements will be replaced with new pipes and appurtenances of similar size and a suitable material. The new storm drain will generally follow the same alignment to preserve existing hydraulic conditions and minimize site disturbances as much as possible. NV5 is also providing topographic survey and geotechnical design for this project.

#### On-Call Plan Check + Public Works Inspection Services

CITY OF BEAUMONT | BEAUMONT, CA

**Plan Check Engineer.** Mr. Moore is providing review of as-needed private development projects. Services include subdivision and parcel map review, grading, public and private street and utility improvements, storm drain, sewer, erosion control, geotechnical, hydrology/hydraulic, structural, water quality/NPDES, and landscape reviews.

#### On-Call Civil & Water Quality Management Plan Check Services

COUNTY OF SAN BERNARDINO | SAN BERNARDINO, CA

**Plan Check Engineer.** Mr. Moore is providing engineering development review services for a variety of projects ranging from single-family developments to large, multiphase subdivisions and commercial projects with significant public infrastructure requirements. NV5 reviews Hydraulic and Hydrologic Analyses, Water Quality Management Plans (WQMPs), erosion control plans, soils reports, private grading and public improvement plans.

#### On-Call Public Off-site Improvement Plan Check Services

CITY OF FONTANA | FONTANA, CA

**Plan Check Engineer.** Mr. Moore is part of the team that provides plan check services for various street, street lighting, sewer, and storm drain plans, hydrology and hydraulics reports, soils reports, and specifications in compliance with City Design Standards, Municipal Code, Development Code, and State Regulations.



# F. RESUMES

## CONTACT INFO

jennifer.peterson  
@nv5.com

## EXPERIENCE

27 years

## EDUCATION

B.S. Civil Engineering  
(Environmental)

## LICENSES/ CERTIFICATES

Civil Engineer (CA)  
No. 67821

Qualified SWPPP  
Developer/Qualified  
SWPPP Practitioner  
(CA) No. 00502 (CASQA)

Certified Floodplain  
Manager

Certified Professional  
in Erosion & Sediment  
Control

LEED Accredited  
Professional

## AWARDS + HONORS

- ▶ 2024 Outstanding Service Award for contributions to CASQA's Construction General Permit Training Team



## JENNIFER PETERSON, PE, CFM, QSD/P, CPESC, LEED AP Project/Program Manager

Ms. Peterson is an engineering manager with 27 years of focused experience working in the water resources field and managing stormwater projects. She has managed stormwater programs for various agencies throughout the state, which has included preparation and review of technical water quality documents, creating tools and processes for efficient plan check reviews, stormwater training, review and editing of technical specifications, and management of various stakeholders and subconsultant staff. She is an experienced project manager with a proven track record of delivering projects on time and within budget.

### Project Experience

#### On-Call Plan Check + Public Works Inspection Services

CITY OF BEAUMONT | BEAUMONT, CA

**Project Engineer.** Ms. Peterson is responsible for reviewing all water quality technical reports in compliance with local municipal requirements and provided construction inspection and stormwater training for City staff. NV5 reviews all plans and associated technical reports for clarity, format, completeness, and conformance to the City's grading and roadway criteria, industry-standard design procedures, permit requirements, and conditions of development.

#### Haun and Holland Road Widening

CITY OF MENIFEE | MENIFEE, CA

**Water Quality Specialist.** Ms. Peterson provided engineering design services for the Haun Road and Holland Road Intersection Improvements. Services performed included finalizing roadway plan sheets, title sheets, and typical sections and detail sheets for the intersection improvements, completing signing and striping plans, coordinating the relocation of the existing air release valve with Eastern Municipal Water District, preparation of 90% and 100% submittals and addressing the City review comments.

#### Mecca Boys and Girls Club WQMP

RIVERSIDE COUNTY | MECCA, CA

**Project Manager.** Ms. Peterson served as the project manager for the preparation of a preliminary water quality management plan for the club site. The site incorporated an on-site detention basin for flood control and for water quality purposes. The project is the development of a 30,000-square-foot club with a teen center, computer lab, homework help center, gym, indoor basketball courts, arts and crafts areas, boxing club, and an outdoor patio.

#### East Valley Parkway Improvements

CITY OF ESCONDIDO | ESCONDIDO, CA

**Project Engineer.** Ms. Peterson was responsible for water quality design and stormwater permits for the ½-mile widening of East Valley Parkway and Valley Center Road to prime arterial standards between Beven Drive and the northerly City limits where it joined improvements previously constructed by the County. The project eliminated a traffic bottleneck and features a bridge widening, traffic signal modifications, streetscape design, preparation of right-of-way documents and environmental services. Ms. Peterson was also the QSP during construction and helped the City respond to various requests from the RWQCB.



## CONTACT INFO

jim.daly@nv5.com

## EXPERIENCE

37 years

## EDUCATION

B.S. Civil Engineering

## LICENSES/ CERTIFICATES

Civil Engineer (CA)

No. 45612

## AFFILIATIONS

American Public Works  
Association

American Society of Civil  
Engineers

## JIM DALY, PE

### Construction Manager

---

Mr. Daly has more than 37 years of experience managing both horizontal and vertical capital improvement projects. As Assistant Deputy Director (Road Maintenance) for the County of Los Angeles, Mr. Daly managed approximately 500 employees responsible for the maintenance and repair of roadways, sidewalks, and parkway trees. He has experience managing myriad projects – including federally funded – for various departments, including Parks and Recreation, Beaches and Harbors, and Public Library departments, and has managed and designed flood control facilities, including storm drains and pump plants.

### Project Experience

---

#### Principal Engineer

LOS ANGELES COUNTY PUBLIC WORKS

**Principal Engineer.** Mr. Daly managed field operations with a staff of 125 employees maintaining and improving roads, sidewalks, parkway trees, spreading grounds, debris basins, channels, pump plants, and ocean outlets. He managed Capital Project Improvement Projects for various County Departments, including Parks and Recreation, Beaches and Harbor, and Public Library. These projects included many complex projects requiring extensive coordination with local, state, and federal agencies.

#### East L.A. Civic Center and Library Improvements

LOS ANGELES COUNTY PUBLIC WORKS | LOS ANGELES, CA

**Project Director.** Mr. Daly oversaw the \$32M facility and ADA improvements project, which included modification of the fishing lake, picnic areas and outdoor stage. The project also included the refurbishment of the former library to provide a one-stop office for residents. The \$7.2M library project included the construction of a new 26,000-square-foot facility, additional parking, artwork and redesigned outdoor spaces.

#### Bastanchury Road Widening

CITY OF YORBA LINDA | YORBA LINDA, CA

**Assistant Construction Manager.** Mr. Daly is assisting with construction management services on the Bastanchury Road Widening project between Casa Loma Avenue and Eureka Avenue. The scope of work includes adding a second lane in each direction along with a two-way turn lane in the median; elevating portions of the roadway center line up to 6 feet; constructing retaining walls/structures; installation of traffic signals at the intersections of Bastanchury Road/Casa Loma Avenue and Bastanchury Road/Eureka Avenue; and installation of new bike lanes, a multipurpose trail, and sidewalk/parkway improvements with new irrigation and landscaping. NV5 is also providing on-site welding inspection of a water line. Project considerations include coordination with an adjacent tract home development that is undergoing construction improvements; coordination with the Yorba Linda Water District; and coordination with utilities for relocations that will be made before the road widening.



## CONTACT INFO

luanne.bean@nv5.com

## EXPERIENCE

35 years

## EDUCATION

M.S. Civil Engineering

B.S. Civil Engineering

## LICENSES

Civil Engineer (CA)

No. 50129

Former Class A General Engineering Contractor

## REGISTRATIONS

FEMA OPS - I

HAZMAT First Responder/  
Operations Level

DOT Offers of Bulk  
and Non-Bulk HAZMAT  
Packages

Nuclear Waste Safety  
for Workers

## LUANNE BEAN, PE

### Construction Manager

Ms. Bean has more than 35 years of experience in the engineering, design, and construction of water and wastewater projects. As a Registered Civil Engineer and a former Class A General Engineering Contractor, Ms. Bean has seen construction from both sides of the fence. Her technical skills include specialized structural analysis and design of large 600-MGD water treatment plants, pipelines up to 12 feet in diameter, mechanical analysis, SCADA & I&C oversight and coordination, the preparation of engineering plans, specifications and cost estimates, as well as construction management. She has held various positions with many public agencies, including Structural Discipline Director for Southern Nevada Water Authority's \$6B CIP program, for which she specialized in structural and forensic analysis and Project Manager for the Metropolitan Water District.

### Project Experience

#### Project Management Services for Various CIP

CITY OF EL MONTE | EL MONTE, CA

**Project Manager.** Ms. Bean oversees NV5's contract with the City providing as-needed project management services on various Capital Improvements Projects, including augmentation of City staff. Ms. Bean is providing Project Management Services to the City on various Capital Improvements Projects. Projects include the following:

- Cypress Avenue Emergency Project
- Staff Augmentation Project Manager
- Active Transportation for El Monte Station and Downtown El Monte Project (CIP 890)
- Miscellaneous Project Oversight for 2022, 2023 and 2024
- Merced Avenue Traffic Calming Project (CIP 003)
- El Monte Regional Bicycle Commuter Access Improvement Project (CIP 016)
- Nevada-Bodger Sewer Improvements (CIP 005 and CIP 038)
- Garvey Avenue Storm Drain Project (CIP 884)
- Bus Stop Improvement Project
- Santa Anita Active Transportation Program Cycle (CIP 890)

#### On-Call Project Management and Construction Management Services

CITY OF IRVINE | IRVINE, CA

**Project Manager.** Ms. Bean oversees NV5's contract with the City providing as-needed project management and construction management services, including augmentation of City staff. As part of this contract, she has served as Project and Construction Manager for a \$1.5M pool replastering project for the William Woollett Jr. Aquatics Center that involved restoring and resurfacing three pools. Ms. Bean was also the Project Manager for the \$280K exterior rehabilitation and painting for the Heritage Park Community Center and two other buildings in the park.



# F. RESUMES

## CONTACT INFO

peter.salgado@nv5.com

## EXPERIENCE

25 years

## EDUCATION

B.S. Civil Engineering

## LICENSES

Civil Engineer (CA)

No. 63159

## PETER SALGADO, PE

### Construction Manager

---

With 25 years of experience, Mr. Salgado has managed and delivered a variety of public works projects, including street improvements, vertical construction and tenant improvements, parks and landscaping improvements, and water, sewer and storm drain improvements. Working with a variety of agencies, he is thoroughly familiar with local, state and federal procedures. As a construction manager, his specific duties include supervising inspectors; reviewing project plans, specifications, and cost estimates; maintaining cost and schedule control, including developing and updating the master schedule; managing the bid/award process; administering consultant and construction contracts; conducting weekly progress meetings; processing and tracking project correspondence and documentation; reviewing, evaluating and negotiating construction change orders; preparing and presenting staff reports for City Council and Board of Directors; facilitating work related to warranties; and managing project closeout.

### Project Experience

---

#### Margarita Recreation Center

CITY OF TEMECULA | TEMECULA, CA

**Project Manager.** Mr. Salgado oversaw NV5's team who provided Owner's Representative services for the reconstruction of the Margarita Recreation Center. This Design-Build (DB) project demolished the existing facility and replaced it with a new 8,500-square-foot building and 25-yard outdoor pool. The new facility includes a zero-depth, warm water, wheelchair accessible six-lane pool, dance/fitness studio, classroom, and multi-purpose room. As part of its services, NV5 provided preliminary engineering and geotechnical design, project management, construction management, resident inspection, geotechnical and materials testing and deputy inspection, and environmental and land surveying. In concert with City staff, NV5 prepared the design bridging documents and the DB Request for Proposal and assisted the City with the DB contract Advertising and Award process. It also included a CPM schedule covering acquisition of the DB contractor, final design, permitting, construction and closeout.

#### Bellflower Boulevard & Alondra Boulevard Rehabilitation

CITY OF BELLFLOWER | BELLFLOWER, CA

**Construction Manager.** Mr. Salgado provided construction management services for the \$1.4M federally funded Bellflower Boulevard Rehabilitation project from Artesia Boulevard to South City Limit. Our team provided construction management, inspection, labor compliance and funding oversight services for this street improvement project. The project included reconstruction and resurfacing of AC pavement, installation of new traffic loops, adjustment of utilities to grade, and new traffic signage and striping.

#### FY 2021-22 Street Improvements

CITY OF LA HABRA HEIGHTS | LA HABRA HEIGHTS, CA

**Construction Manager.** Mr. Salgado provided construction management services and oversaw inspection services for the City's FY 2021-22 Street Improvements project. The scope of work includes street reconstruction and resurfacing, installation of AC berms, removal and construction of curb and gutter, utility adjustments, and traffic signage and striping.



# F. RESUMES

## CONTACT INFO

antonio.zori@nv5.com

## EXPERIENCE

24 years

## EDUCATION

M.S. Civil Engineering

## LICENSES/ CERTIFICATES

Certified Construction  
Manager, No. 32411

Certificate International  
Program, Construction  
Management, UCLA

## ANTONIO ZORI, CCM

### Construction Manager

---

Mr. Zori has more than 24 years of experience in managing public and private contracts. He is experienced in construction planning and scheduling, cost estimating, bidding and procurement process, cost and production tracking, contract negotiation, change orders and value engineering, and risk and litigation management. He is fluent in both English and Spanish.

### Project Experience

---

#### On-Call General Civil Engineering Services

CITY OF LAGUNA WOODS | LAGUNA WOODS, CA

**Construction Manager.** As part of an on-call contract with the City that includes staff augmentation services, Mr. Zori provides construction management and inspection for public works projects, including street, sewer and storm drain improvements.

#### Barnes Park Multi-Benefit Stormwater Capture

CITY OF BALDWIN PARK | BALDWIN PARK, CA

**Senior Construction Project Manager.** Mr. Zori was responsible for the construction of a new underground precast infiltration cistern with a capacity of 4 acre-feet. The cistern, in collaboration with Precon, was constructed of precast concrete elements, including openings at the bottom filled with crushed rock to facilitate the infiltration. Construction required 40,000 cubic yards of excavation and 30,000 cubic yards of backfilling. The project included the diversion structure needed to connect the existing 81-inch RCP main storm drain with the new infiltration cistern, and the demolition and reconstruction of a reinforced concrete 81-inch RCP storm drain pipe, a motorized 42-inch plug valve and actuator, splitter vault and a 30-foot-tall hydrodynamic separator. 590 LF of 42-inch RCP pipeline and other utilities were installed, and added landscaping included irrigation and potable water pipes as well as storm drain and sewer pipes. The work included upgrading existing electrical panels; installing 12 Musco 60-foot tall sport lights; installing 65 lightpoles and a new security camera system; installing one flow meter and two float sensors inside the cistern, flow control panels and all the power and communication conduits/wiring related to these works. After completion of this project, a plug valve electronically connected to a new infiltration control panel successfully regulates the flow entering the cistern. The project also included a 300-LF CMU perimetral wall and the construction of two soccer fields, four basketball courts, a new playground, picnic areas, a dog park and a new parking lot, among other park improvements.

#### Project Management & Engineering Design Services

CITY OF EL MONTE | EL MONTE, CA

**Assistant Project Manager.** Mr. Zori is providing as-needed project management services for various Capital Improvements Projects, including the Nevada-Bodger Sewer Improvements (CIP 005 and CIP 038) and Garvey Avenue Storm Drain (CIP 884) projects.





# F. RESUMES

## CONTACT INFO

india.woodruff@nv5.com

## EXPERIENCE

7 years

## EDUCATION

M.S. Civil Engineering  
(Coastal Engineering)

B.S. Civil Engineering

## LICENSES/ CERTIFICATES

Metrolink Railroad Safety  
Contractor Safety Trained,  
No. 26471E22

## AWARDS

- ▶ “Honors” AGC  
Construction Project  
Management Course,  
San Diego, CA (January  
2021)
- ▶ Ralph Alan Dusseau  
Award for Civil &  
Environmental  
Engineering, Glasboro,  
N.J. (May 2016)



## INDIA WOODRUFF

### Construction Manager

Ms. Woodruff is a proactive, self-motivated Assistant Construction Manager/ Resident Engineer who has managed at-risk projects throughout Southern California. She is experienced in Microsoft Office, Procore, Primavera P6, Microsoft Projects, AutoCad, and Revu Bluebeam. Her solid negotiation and communication skills along with proven project management skills allow her to effectively interact with clients as well as construction trades.

### Project Experience

#### On-Call Plan Check + Public Works Inspection Services

CITY OF BEAUMONT | BEAUMONT, CA

**Plan Check Engineer.** Ms. Woodruff is providing professional plan check services or the City. NV5 has provided review of private and public works development projects, as well as public works inspection services to the City. Our team reviews a variety of development applications – from several thousand lots, multi-phase planned residential developments to proposed floodplain development and structural review of bridges. Reviews include improvement, grading, and erosion control plans, sewer and storm drain plans, hydrology and hydraulic reports, water quality reports, geotechnical reports, structural calculations, and cost estimates. NV5 has also been providing stormwater management support for construction, MS4, and Industrial permits as staff extension to the City.

#### Sidewalk & Curb Ramp Reconstruction (Phase 2)

CITY OF EL MONTE | EL MONTE, CA

**Assistant Construction Manager.** Ms. Woodruff served as Assistant Construction Manager for Phase 2 of this federally-assisted Sidewalk & Curb Ramp Reconstruction project. The scope of work included parkway improvements along various local/residential roadways within the City and includes the reconstruction of existing PCC sidewalks, curb and gutter, driveways, and ADA curb ramps; tree root pruning; and potential tree removal/replacement.

#### William Woollett Jr. Aquatics Center

CITY OF IRVINE | IRVINE, CA

**Construction Manager.** Ms. Woodruff provided construction management services for this pool replastering project (three pools) at the William Woollett Jr. Aquatics Center. The complex is a world-class aquatic facility open year round for regional and national competitive events with two 50-meter pools and a 25-yard instruction pool. The City is currently embarking on restoring and resurfacing all three of these pools. These pools appear to be standard gunnite/shotcrete pools with rows of lap tiles on the bottom and border tiles along the rims.

#### City Engineering (Staff Augmentation)

CITY OF LAGUNA WOODS | LAGUNA WOODS, CA

**Project/Construction Manager.** Ms. Woodruff provides general engineering services on an as-needed basis as extension of City staff. Services include: conducting and reviewing traffic engineering, traffic analysis, and transportation planning studies; providing analysis of existing and projected traffic conditions; street, ADA, sidewalk, storm drain improvement projects; performing pedestrian studies; plan check services; and reviewing new development projects involving traffic impact analysis, modeling, and road impact fee analyses.

## CONTACT INFO

art.biscocho@nv5.com

## EXPERIENCE

30 years

## EDUCATION

B.S. Civil Engineering

## ART BISCOCHO

### Project Engineer

---

Mr. Biscocho has more than 30 years of design experience. He has a demonstrated ability to manage multiple projects from planning to construction close-out. He has a wealth of knowledge of the overall operational experience working with municipal agencies, and his qualifications include the ability to review and prepare construction plans, specifications and cost estimates; provide engineering counter assistance; process permits; and establish, maintain and foster positive working relationships with agency staff.

### Project Experience

---

#### Hacienda Avenue Spa Zone Street Improvements

CITY OF DESERT HOT SPRINGS | DESERT HOT SPRINGS, CA

**Project Engineer.** Mr. Biscocho is providing engineering design services for the City's Hacienda Avenue Spa Zone Street Improvements project. The project proposes to construct 10,341 feet of sidewalks, 9,450 square feet of safety medians, 42 ADA ramps, 8,528 feet of buffered bike lanes, 8,872 feet of standard Class II bike lanes, 99 streetlights, 17 crosswalks, and one intersection safety improvement. The scope of work includes utility coordination; topographic and right-of-way surveys and preparation of base maps, legal descriptions and plats; and pavement investigation and recommendations.

#### "H" Street Widening

CITY OF SAN BERNARDINO | SAN BERNARDINO, CA

**Project Engineer.** Mr. Biscocho provided professional design engineering services, including plans, specifications, cost estimates and related bid documents for the widening of "H" Street from two lanes to four lanes and the upgrade of the existing traffic signals at 40th Street and Kendall Drive. The plans included roadway, drainage, signing and striping, street lighting, modification to traffic signals, and demolition plans. Coordination with utility companies, identifying existing right-of-way, conducting pavement investigation and preparing a report were part of the project.

#### Trona Road Bridge Repairs

COUNTY OF SAN BERNARDINO | SAN BERNARDINO COUNTY, CA

**Project Engineer.** Mr. Biscocho is providing civil engineering design services for the Trona Road Bridge Repair project, which includes retrofit/repair of the existing wingwalls. Repairs are expected to include, but not be limited to, roadway excavations, structural backfill, installation and tensioning of tie-back anchors to realign wingwalls, repair headwall, re-install bridge railing, and AC pavement of roadway. NV5 will also prepare the civil and structural final design plans.

#### Walkway Accessibility Improvements at Two Parks

CITY OF MORENO VALLEY | MORENO VALLEY, CA

**Project Designer.** Mr. Biscocho prepared plans, specifications and estimates. The scope of work generally consisted of removal and replacement of a concrete walkway to conform to Americans with Disabilities Act (ADA)/California Code of Regulations Title 24 - Accessibility relations, including crossings, irrigation modifications, replacement of plant material and drainage improvements. Both park projects received CDBG-R federal funds.



## CONTACT INFO

steve.novak@nv5.com

## EXPERIENCE

25 years

## EDUCATION

A.S. Building Technology

## LICENSES/ CERTIFICATES

Certificate, Master  
Planning Communities

## STEPHEN NOVAK

### Project Engineer

---

Mr. Novak has more than 25 years of experience in civil, environmental and geotechnical engineering. His expertise includes the conceptual planning, design and preparation of rough to precise grading plans; land use studies and preliminary engineering; street design; and water, sanitary sewer, street and storm drain plans. His projects encompass residential, wastewater and infrastructure, mountain and hillside, golf and resort, and commercial projects. His strengths as a designer/planner are first built on natural landforms development that integrates the environmental, cultural and economic imperatives of the client and community, providing creative and innovative design solutions.

### Project Experience

---

#### Phelan Road in the Phelan Area

COUNTY OF SAN BERNARDINO | PHELAN, CA

**Project Engineer.** Mr. Novak is providing engineering design services, including the preparation of preliminary and final plans, specifications and estimates, for the design of Phelan Road, Phelan Area. The project includes pavement rehabilitation and reconstruction on Phelan Road, from State Route 138 east to Los Banos Avenue, new or replacement of existing ADA ramps at 19 locations, and traffic signal installation at Clovis Road in the Phelan area. Services include utility coordination; preparation of legal descriptions and plats; preparation of traffic signing and striping plans and a pedestrian traffic plan; traffic signal modification plans for any ramp locations necessary to provide ADA compliance; environmental services support, including preparation of plans, reports and/or applications for a Stormwater Pollution Prevention Plan; and advertising, bidding and construction support.

#### Chino/Montclair Area ADA Ramps

COUNTY OF SAN BERNARDINO | CHINO & MONTCLAIR, CA

**Project Engineer.** Mr. Novak provided engineering design services, including the preparation of final plans, specifications and cost estimates, for the design of new or replacement of ADA ramps at 56 locations throughout the City of Chino and City of Montclair areas. NV5's services also included preparation of a right-of-way base map, legal descriptions and plats; topographic survey; construction survey and monument preservation; utility coordination; preparation of traffic signing and striping plans and a pedestrian traffic plan; and environmental services support. Our team also provided advertising, bidding and construction support and potholing services.

#### Area Y Park Improvements

CITY OF EL MONTE | EL MONTE, CA

**Project Engineer.** Mr. Novak is providing engineering design services for the Area Y Park Improvements project. As a subconsultant to David Volz Design, our team is providing topographic survey, geotechnical investigation, preliminary and final grading and drainage plans, specifications and cost estimate, and bid and construction phase support for the project.



# F. RESUMES

## CONTACT INFO

padma.asam@nv5.com

## EXPERIENCE

17 years

## EDUCATION

M.S. Structural Engineering

B.S. Civil Engineering

## LICENSES/ CERTIFICATES

Civil Engineer (CA)  
No. 83896

Qualified SWPPP  
Developer/ Qualified  
SWPPP Practitioner  
No. 27085

Envision Sustainability  
Professional

LEED Accredited  
Professional



## PADMA ASAM, PE, QSD/P, ENV SP, LEED AP

### Project Engineer

Ms. Asam has 17 years of design experience in public works projects, including design of roadway widening and alignments, retaining walls, pedestrian ramps, engineering reports and utility undergrounding. She is adept in the design standards of various local public agencies in Southern California. Ms. Asam has extensive experience reviewing grading plans, street and storm drain improvement plans, utility plans, tract maps, structural plans and details and stormwater-related documents. She has extensive experience working with local funding agencies to prepare and administer grant applications on behalf of local agency clients.

### Project Experience

#### City Engineering and Plan Check Services

CITY OF IMPERIAL BEACH | IMPERIAL BEACH, CA

**Project Engineer.** Ms. Asam is providing consultant City Engineer services for this beachside community. The suite of services consists of three major elements: City Engineer services, plan check/development review, design of capital improvement projects, and grant administration.

#### Oak Knoll Road Improvements

CITY OF POWAY | POWAY, CA

**Project Engineer.** Ms. Asam performed plan and profile design, storm drain system design and driveway profile design. The 1-mile road improvement project stretched through a variety of zoned areas that required the roadway design width to vary throughout its length and meet the unique needs of each zoned area – commercial, high density, and residential. Roadway improvements included necessary demolition, relocation of overhead utilities, pavement rehabilitation, pavement overlay, curb, gutter, sidewalks, on-street parking, signage and striping, traffic control, signal modifications, drainage, traffic calming, retaining walls and landscaping.

#### On-Call Plan Check + Public Works Inspection Services

CITY OF BEAUMONT | BEAUMONT, CA

**Project Engineer.** Ms. Asam is providing review of private development projects and public works inspection services. NV5 reviews all plans and associated technical reports for clarity, format, completeness and conformance to the City's grading and roadway criteria, industry-standard design procedures, permit requirements and conditions of development.

#### On-Call Civil & Water Quality Management Plan Check Services

COUNTY OF SAN BERNARDINO | SAN BERNARDINO, CA

**Project Engineer.** Ms. Asam is providing engineering development review services for a variety of projects ranging from single-family developments to large, multiphase subdivisions and commercial projects with significant public infrastructure requirements. NV5 reviews Hydraulic and Hydrologic Analyses, Water Quality Management Plans (WQMPs), erosion control plans, soils reports, private grading and public improvement plans for conformance with project conditions of approval and compliance with County requirements.



## CONTACT INFO

thomas.grace@nv5.com

## EXPERIENCE

24 years

## EDUCATION

B.S. Civil Engineering

## LICENSES/ CERTIFICATES

Engineer in Training, CA  
No. 103177

## THOMAS GRACE, EIT

### Project Engineer + Drafting Technician

Mr. Grace is a registered Engineer-in-Training with over 24 years of experience specializing in hydrologic and hydraulic engineering for urban drainage facilities, flood control improvements, floodplain studies and water quality compliance documentation. His work includes preliminary and final engineering design phases, as well as SWPPP and SUSMP documentation. He is skilled in using HEC-RAS, Auto-CAD, WSPG, HEC-HMS, FlowMaster, CulvertMaster, HY-8, CivilCAD, AES Model, Pond Pack, StormCAD, and SWMM.

### Project Experience

#### City Engineering and Plan Check Services

CITY OF IMPERIAL BEACH | IMPERIAL BEACH, CA

**Project Engineer.** Mr. Grace is providing consultant City Engineer services for this beachside community. The suite of services consists of three major elements: City Engineer services, plan check/development review, design of capital improvement projects, and grant administration.

#### Bradley Road Bridge Over Salt Creek, Preliminary Drainage Study

CITY OF MENIFEE | MENIFEE, CA

**Project Engineer.** This project consists of improving Bradley Road between Rio Vista Drive and Potomac Drive within the City of Menifee. This improvement consists of providing an all-weather crossing at Salt Creek in lieu of the existing two-pipe culvert dip crossing. Such an improvement is necessary for the surrounding communities that get stranded even after a five-year storm event as the roadway floods and becomes impassable. Duties included: hydrologic and hydraulic analyses.

#### Drainage Study Reviews

CITY OF BEAUMONT | BEAUMONT, CA

**Project Engineer.** Mr. Grace performed drainage study reviews for the City as part of NV5's On-Call Plan Check and Public Works Inspection Services contract. Duties included: drainage study reviews, assuring submitted drainage reports adhered to the City's standards, and providing review comments to be addressed for approval. Projects reviewed include 1010 West 4th Street WQMP, PA 33 Active Adult Development SWPPP Review, Heartland Development Drainage Study, Four Seasons Development Drainage Study, Olivewood Sewer Plans Review, and Any Size RV, Trailer and Boat Storage WQMP.

#### Lake Drive Storm Drain Replacement

CITY OF ENCINITAS | ENCINITAS, CA

**Project Engineer.** Mr. Grace is providing engineering design services for the Lake Drive Storm Drain Replacement Project, which involves the replacement of 2,000 feet of failed 48-inch corrugated metal pipe (CMP) with new reinforced concrete pipe (RCP) through an environmentally sensitive canyon area between Lake Drive and Interstate 5 (I-5). During the design period, due to significant rainfall events, a sinkhole developed at the top of the project limits, eventually affecting a portion of Lake Drive and local utilities, prompting an emergency response. NV5 worked closely with the City and the emergency construction crews to produce an emergency "interim" design to collect and convey the drainage.



# F. RESUMES

## CONTACT INFO

michael.rocco@nv5.com

## EXPERIENCE

22 years

## EDUCATION

AutoCAD University

NV5 Project Manager Course

## LICENSES/ CERTIFICATES

CADD Drafting & Technical Drawing Certificates

## AFFILIATIONS

American Public Works Association (APWA)



## MICHAEL ROCCO

### Project Engineer + Drafting Technician

---

Mr. Rocco is a Senior Civil Designer with more than 22 years of experience working on projects in all phases, from concept to construction. He excels in the development of complete plan sets, understands the importance of plan presentation and construction details, effectively uses digital terrain model surfaces and field data, and is able to review geotechnical data to assist with earthwork quantity calculations. His experience includes construction management and field inspection. He has the technical experience to lead plan development for roadway geometric layout, site design, grading, retaining walls, striping, and traffic control.

### Project Experience

---

#### Lake Drive Storm Drain Replacement

CITY OF ENCINITAS | ENCINITAS, CA

**Project Designer.** Mr. Rocco is providing engineering design services for the Lake Drive Storm Drain Replacement Project, which involves the replacement of 2,000 feet of failed 48-inch corrugated metal pipe (CMP) with new reinforced concrete pipe (RCP) through an environmentally sensitive canyon area between Lake Drive and Interstate 5 (I-5). During the design period, due to significant rainfall events, a sinkhole developed at the top of the project limits, eventually affecting a portion of Lake Drive and local utilities, prompting an emergency response. NV5 worked closely with the City and the emergency construction crews to produce an emergency “interim” design to collect and convey the drainage.

#### Imperial Beach Boulevard Enhancements

CITY OF IMPERIAL BEACH | IMPERIAL BEACH, CA

**Assistant Project Manager.** Mr. Rocco was responsible for consultant oversight of a 1.8-mile-long street improvement project. The project was designed to improve mobility, accessibility, landscaping, and water quality while addressing infrastructure deficiencies along Imperial Beach Boulevard from Seacoast Drive to 14th Street. The project included traffic calming, beautification of the gateway into Imperial Beach, Tijuana Estuary beautification complete with a boardwalk and tourist enhancements, ADA improvements, lit corridors with landscaping, utilities upgrades to address deficiencies, sustainable stormwater infrastructure, drainage features and roadway improvements.

#### On-Call Plan Check + Public Works Inspection Services

CITY OF BEAUMONT | BEAUMONT, CA

**Plan Check Engineer.** Mr. Rocco is providing review of as-needed private development projects. Services include subdivision and parcel map review, grading, street and utility improvements, storm drain, sewer, erosion control, geotechnical, hydrology/hydraulic, structural, water quality/NPDES, and landscape reviews.

#### SR-91/La Sierra Avenue Interchange

CALTRANS | RIVERSIDE, CA

**Project Team Member.** Mr. Rocco assisted with preparation of approximately 400 sheets of drawings for the interchange improvements at La Sierra Avenue and SR-91 in the City of Riverside. Duties included adding the City’s redlines on hard copy sheets to the electronic files, compiling RFIs, CCOs, and other revisions into one comprehensive file, and submitting a final revised set of as-builts to the City of Riverside and Caltrans.

## CONTACT INFO

sarah.seitz@nv5.com

## EXPERIENCE

2 years

## EDUCATION

B.S. Environmental  
Engineering

## LICENSES/ CERTIFICATES

Engineer-in-Training (EIT)

## SARAH SEITZ, EIT

### Project Engineer

---

Ms. Seitz holds dual roles as a plan check engineer and project engineer, bringing over two years of experience in the field. She has provided as-needed/on-call plan check and civil engineering services to various municipalities across Southern California. Ms. Seitz's comprehensive understanding of municipal requirements and her ability to seamlessly integrate into existing teams assure that she can provide high-quality, reliable services. Her track record of successfully handling diverse projects highlights her capability to meet the dynamic needs of municipalities efficiently and effectively.

### Project Experience

---

#### On-Call Plan Check + Public Works Inspection Services

CITY OF BEAUMONT | BEAUMONT, CA

**WQMP Plan Check Engineer.** Ms. Seitz is part of the team responsible for reviewing private and public works development projects. Reviews include improvement, grading, and erosion control plans, sewer and storm drain plans, hydrology and hydraulic reports, water quality reports, geotechnical reports, structural calculations, and cost estimates. NV5 has also been providing stormwater management support for construction, MS4, and Industrial permits as staff extension to the City.

#### Alderwood Park Pickleball Courts

CITY OF MURRIETA | MURRIETA, CA

**Project Engineer.** Ms. Seitz provided engineering design services for the construction of four new pickleball courts at Alderwood Park. Work included PS&E, staking, survey, geotechnical engineering services, court design, landscape architecture services and water quality management. The project also included new ADA-compliant sidewalks around the new courts, a seating area, a fence, and other hardscape additions. The NV5 team coordinated closely with City staff during the process.

#### On-Call Public Off-site Improvement Plan Check Services

CITY OF FONTANA | FONTANA, CA

**WQMP Plan Check Engineer.** Ms. Seitz is part of the team that provides plan check services for various street, street lighting, sewer, and storm drain plans, hydrology and hydraulics reports, soils reports, and specifications in compliance with City Design Standards, Municipal Code, Development Code, and State Regulations.

#### Lake Drive Storm Drain Replacement

CITY OF ENCINITAS | ENCINITAS, CA

**Assistant Engineer.** Ms. Seitz is providing engineering design services for the Lake Drive Storm Drain Replacement Project, which involves the replacement of 2,000 feet of failed 48-inch corrugated metal pipe (CMP) with new reinforced concrete pipe (RCP) through an environmentally sensitive canyon area between Lake Drive and Interstate 5 (I-5). During the design period, due to significant rainfall events, a sinkhole developed at the top of the project limits, eventually affecting a portion of Lake Drive and local utilities, prompting an emergency response. NV5 worked closely with the City and the emergency construction crews to produce an emergency "interim" design to collect and convey the drainage.



# F. RESUMES

## CONTACT INFO

rafael.gutierrez@nv5.com

## EXPERIENCE

18 years

## EDUCATION

A.A. Computer-aided  
Drafting & Design

## RAFAEL GUTIERREZ

### Drafting Technician

---

Mr. Gutierrez has more than 18 years of experience as a design engineer for various civil engineering and capital improvement projects, including water/wastewater and transportation projects. As a design engineer, his qualifications include the ability to review and prepare plans, specifications and cost estimates; surveying; and establishing and maintaining positive working relationships with staff. Mr. Gutierrez is proficient in CAD and other design software.

### Project Experience

---

#### Phelan Road in the Phelan Area

COUNTY OF SAN BERNARDINO | PHELAN, CA

**CAD Designer.** Mr. Gutierrez is providing CAD design services for providing engineering design services, including the preparation of preliminary and final plans, specifications and estimates, for the design of Phelan Road, Phelan Area. The project includes pavement rehabilitation and reconstruction on Phelan Road, from State Route 138 east to Los Banos Avenue, new or replacement of existing ADA ramps at 19 locations, and traffic signal installation at Clovis Road in the Phelan area. Services include utility coordination; preparation of legal descriptions and plats; preparation of traffic signing and striping plans and a pedestrian traffic plan; traffic signal modification plans for any ramp locations necessary to provide ADA compliance; environmental services support, including preparation of plans, reports and/or applications for a Stormwater Pollution Prevention Plan; and advertising, bidding and construction support.

#### Staff Augmentation – CADD Services for Street Improvement Plans

CITY OF GARDEN GROVE | GARDEN GROVE, CA

**CAD Designer.** Mr. Gutierrez is assisting the City as a part-time CAD Designer with drafting three street rehabilitation projects which include approximately 7,550 LF of improvements.

#### Cherry Avenue and Other Roads, Fontana Area

COUNTY OF SAN BERNARDINO | FONTANA, CA

**CAD Designer.** Mr. Gutierrez is providing CAD design services and engineering design services, including preparation of final plans, specifications and cost estimates for a project involving pavement rehabilitation to Cherry Avenue and other roads (approximately 14.72 miles) and the replacement of existing ADA ramps at 42 locations in the Fontana area. NV5 will review the existing topographic to ensure new ramps drain properly and identify and address localized drainage issues within the project footprint. NV5's services also include preparation of legal descriptions and plats; utility coordination; preparation of traffic signing and striping plans and a pedestrian traffic plan; and environmental services support.

#### As-Need City Engineering and Traffic Engineering Services

CITY OF LAGUNA WOODS | LAGUNA WOODS, CA

**CAD Designer.** NV5 provides city engineering and traffic engineering services on an as-needed basis to the City. Mr. Gutierrez is providing CAD design services for various types of projects, including: modifying civil engineering plans and street improvements; and preparing plans and specifications for all the Public Works capital improvements projects including street, sewer, storm drain, and park improvements.





# F. RESUMES

## CONTACT INFO

amy.storey@nv5.com

## EXPERIENCE

21 years

## LICENSES/ CERTIFICATES

Certificate in Geographic Information Systems (GIS)

Certificate Esri, Deploying and Managing a MultiUser Database

Certificate Esri, Implementing ArcGIS Online

Certificate Introduction to ArcGIS I & II, Esri Redlands Campus

URISA Leadership Academy Certificate

Certificate Floodplain Boundary Standards Training, FEMA

Certificate Mapping Information Platform Training, SP14

LEED Accredited Professional



## AMY STOREY, LEED AP

### ArcMap + GIS Design Support

Ms. Storey has been working as a Geographical Information Systems (GIS) Specialist in the NV5 GIS group for the past 21 years. She provides services that include geodatabase design, GIS web mapping and applications development, GIS analysis, data acquisition and conversion, project management through GIS MapBooks, as well as drafting and Civil3D experience.

### Project Experience

#### Phase 6 Infiltration/Inflow Mitigation Sewer Improvements

CITY OF LA MESA | LA MESA, CA

**Lead GIS Analyst.** Ms. Storey was the Lead GIS Analyst for the City of La Mesa Phase 6 Infiltration/Inflow Mitigation Sewer Improvements. NV5 utilized ArcGIS Server cloud technology to develop a web application for the collection of manhole inspections and creation of inspection forms. The web app was created using Survey123 forms on a tablet to collect the information in the field directly into an ESRI-compliant geodatabase, incorporating spatial data from the manhole inspections, photos and videos, and attributes based on NASSCO manhole inspection codes. This information was uploaded in real time to a web map for review and project management. NV5 utilized our Online GIS Portal to streamline the collection of the geodatabase information and creation of manhole inspection forms. After completing all inspections, the data was reviewed for completeness and accuracy. The deliverables were exported directly from the web server in several deliverable formats.

#### Cleveland National Forest Power Poles Replacement Project for Crux Subsurface/SDG&E

SDG&E | SAN DIEGO COUNTY, CA

**Lead GIS Analyst.** NV5 was contracted to create an online GIS portal to manage over 19 electrical circuits throughout the Cleveland National Forest. Poles, access roads and workspaces were collected in the field utilizing web maps and services created through ArcGIS Server and managed on a cloud portal. As lead GIS Analyst, Ms. Storey's tasks included setup of ArcGIS Server, creating an enterprise GIS portal, creating feature services and web maps for online and offline data collection and review, developing web applications for field collection, data processing of survey data, managing the data in a sequel database, and creating MapBooks and shapefiles as needed for submittals.

#### On-Call GIS Services

SAN DIEGO GAS & ELECTRIC | SAN DIEGO COUNTY AND IMPERIAL COUNTY, CA

**Lead GIS Analyst.** Ms. Storey served as Lead GIS Analyst for the conversion of survey data along the proposed Sunrise Powerlink Project in San Diego and Imperial Counties to be uploaded into the clients' internal SDE Geodatabase. The project included conversion of AutoCAD layers to GIS shape file Format using ArcInfo 9.3 conversion tools, population of all required attribute fields in the feature class tables provided by SDG&E utilizing easement documentation, record of survey drawings, and preliminary surveys for the Sunrise Powerlink project study area. NV5 also created a Polygon layer of all Parcel Ownership Boundary changes, reflecting any changes to the current land ownership layer and including attribute information to show the source of the change.

# F. RESUMES

## CONTACT INFO

tam.vo@nv5.com

## EXPERIENCE

9 years

## EDUCATION

B.S. Earth & Environmental Sciences

## TAM DAN VO

### Urban Planner

---

Ms. Vo has experience reviewing building permit plans for multifamily and single-family dwellings, and commercial and tenant improvements. She is knowledgeable in applying zoning and regulatory codes and has an understanding of environmental and planning laws and regulations. She is proficient in utilizing planning and GIS tools to produce visual representations of data. She is fluent in Vietnamese.

### Project Experience

---

#### Assistant Planner

CITY OF SAN DIEGO | SAN DIEGO, CA

Ms. Vo reviews and approves building plans for conformance with zoning regulations for the Development Services Department at the City of San Diego. These project types include multifamily dwellings, single-family dwellings, accessory dwelling units, ADU Bonus Program, accessory structures, and commercial tenant improvements. As part of the plan review process, she utilizes a variety of document databases and computer mapping tools to identify overlay designations, such as environmentally sensitive areas, airport zones, floodplains, and any site-specific feature that may be subject to other disciplines. She prepares detailed Zoning comment lists and responds to applicant inquiries.

#### Land Use/Environmental Planner

COUNTY OF SAN DIEGO | SAN DIEGO, CA

Ms. Vo's responsibilities included:

- Applied Zoning and Regulatory codes, subdivision and processing procedures to review the development project proposal; reviewed building permit plans such as multifamily and single-family dwellings, commercial shells, and tenant improvements.
- Advised a variety of professionals such as architects, contractors, and property owners regarding the implementation and interpretation of zoning regulations.
- Communicated orally and produced written reports that effectively conveyed the purpose of land use projects; discussed zoning allowances and restrictions to the public.
- Utilized planning and GIS tools to produce visual representations of data.

#### Land Use Technician

COUNTY OF SAN DIEGO | SAN DIEGO, CA

Ms. Vo's responsibilities included:

- Explained laws, codes, and ordinances to customers related to land use and construction and permitting processes.
- Consulted and evaluated building and grading projects and provided procedures on permit issuance.



# F. RESUMES

## CONTACT INFO

calvin.hara@nv5.com

## EXPERIENCE

3 years

## EDUCATION

B.A. Environmental Studies

Completed courses in planning, drafting, environmental law and sustainable design

## CALVIN HARA

### Urban Planner

---

Mr. Hara has three years of design experience across multiple disciplines, including telecom, landscape architecture and civil design. His design experience, paired with his educational background and tenure as a physical planner, has given him a keen eye for plan review.

### Project Experience

---

#### Assistant Planner

CITY OF SAN DIEGO | SAN DIEGO, CA

**Assistant Planner.** Mr. Hara's work consists of reviewing proposed ADU, Multiple ADU, and JADU projects. For these projects, he reviews plans for adherence to the City of San Diego Municipal Code. Utilizing the municipal code, tentative maps and GIS tools, Mr. Hara determines all applicable overlay zones, FAR, height, and setback requirements, among other requirements. Common problems that arise are non-compliance with the City's ADU Bonus Program, the Airport Land Use Compatibility Overlay Zone, community plans, and parking requirements. Mr. Hara, with the oversight of his direct supervisor at the City, communicates directly with applicants to discuss issues with submitted plans and offer potential design solutions that would bring their proposed projects into compliance. He is occasionally tasked with completing secondary reviews for plans that have already gone through other city staff or consultants.

#### On-Call Plan Check + Public Works Inspection Services

CITY OF BEAUMONT | BEAUMONT, CA

Mr. Hara is part of the team providing the City with review of as-needed private development projects and public works inspection services. Reviews include improvement, sewer and storm drain plans, hydrology and hydraulic reports, water quality reports, geotechnical reports, structural calculations and cost estimates. NV5 is assisting the City with the development of checklists, standard notes, unit price lists and other documents to standardize and streamline the review/inspection process.

#### Civil & Water Quality Management Plan Check Services

COUNTY OF SAN BERNARDINO | SAN BERNARDINO, CA

Mr. Hara is providing engineering development review services for a variety of projects ranging from single-family developments to large, multiphase subdivisions and commercial projects with significant public infrastructure requirements. NV5 reviewed Hydraulic and Hydrologic Analysis, Water Quality Management Plans (WQMPs), erosion control plans, soils reports, private grading and public improvement plans for conformance with project conditions of approval and compliance with County requirements.

#### Plan Check Services

CITY OF DESERT HOT SPRINGS | DESERT HOT SPRINGS, CA

Mr. Hara is part of the team providing on-call engineering plan check services. Services include the review of grading and improvement plans, hydrology and hydraulic reports, geotechnical reports, water quality treatment and erosion control, title documents and review against project conditions of approval for residential, commercial and industrial development applications.



# ADDENDUM ACKNOWLEDGMENT



**BEAUMONT**  
550 E. 6th Street  
Phone (951) 572-3236  
[BeaumontCa.gov](http://BeaumontCa.gov)

## City of Beaumont

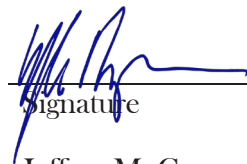
### Addendum #2

#### Request for Proposals: CITY STAFF AUGMENTATION AND PROJECT MANAGEMENT SERVICES

#### Questions & Answers

1. Is this a new contract or renewal of an existing contract?  
*This is a new contract.*
2. If there is an existing contract, could you please share the names of the current vendors and their pricing?  
*Not applicable*
3. What is the estimated budget for this contract?  
*Unfortunately, no estimates will be provided, as the City is asking consultants to provide their most competitive prices.*
4. Is it mandatory to subcontract?  
*No, it is not mandatory*
5. Could you please provide information on the daily duration of shifts required for the necessary professions? For example, the number of hours per day?  
*Durations will be no greater than 8 hours per day.*
6. The RFP mentions a sample of the City's Professional Services Agreement (PSA) by Independent Contractor attached as Exhibit B, but I do not see the attachment. Will the City include it so we may have our legal team review it prior to proposal submission?  
*The Sample Professional Services agreement can be found in the documents section.*

#### Acknowledgement of Addendum #1 (To be included with proposal)



Signature

Jeffrey M. Cooper, PE

Print Name

Nov. 13, 2024

Date



# Fee Schedule



Effective through December 31, 2025. After this time, NV5 will receive a 3% rate increase for each consecutive year beginning January 1, 2026.

<b>ENGINEERING SERVICES</b>	<b>HOURLY RATE**</b>
Principal	\$280
Project Manager	\$218
Quality Assurance Manager	\$210
Traffic Engineer	\$225
Senior Structural Engineer	\$210
Structural Engineer	\$180
Senior Engineer	\$185
Senior Designer	\$155
Project Engineer	\$174
Assistant Engineer	\$128
Designer	\$128
CADD Technician	\$120
Administration	\$98
<b>MUNICIPAL SERVICES</b>	<b>HOURLY RATE**</b>
Program/Project Director	\$220
Project Manager	\$218
City Engineer	\$218
Assistant Project Manager	\$190
Associate Engineer	\$175
Plan Check Engineer III	\$195
Plan Check Engineer II	\$175
Plan Check Engineer I	\$150
Public Works Technician	\$110
Permit Technician	\$110
<b>CONSTRUCTION SERVICES</b>	<b>HOURLY RATE**</b>
Senior Construction Manager	\$205
Construction Manager	\$190
Senior Office Engineer	\$155
Office Engineer	\$128
Construction Administration	\$98
<b>REIMBURSABLE EXPENSES</b>	<b>COST</b>
Reproduction	Cost
Consultant Services	Cost + 15%
Automobile Transportation	per IRS standard
Delivery, Freight, Courier	Cost
Agency Fees	Cost
Commercial Travel	Cost

\*\* Regular rates. Work in excess of 8 hours and work on Saturdays will be billed at 1.5 times the regular rate. Work in excess of 12 hours and work on Sundays and Holidays will be billed at 2 times the regular rate.