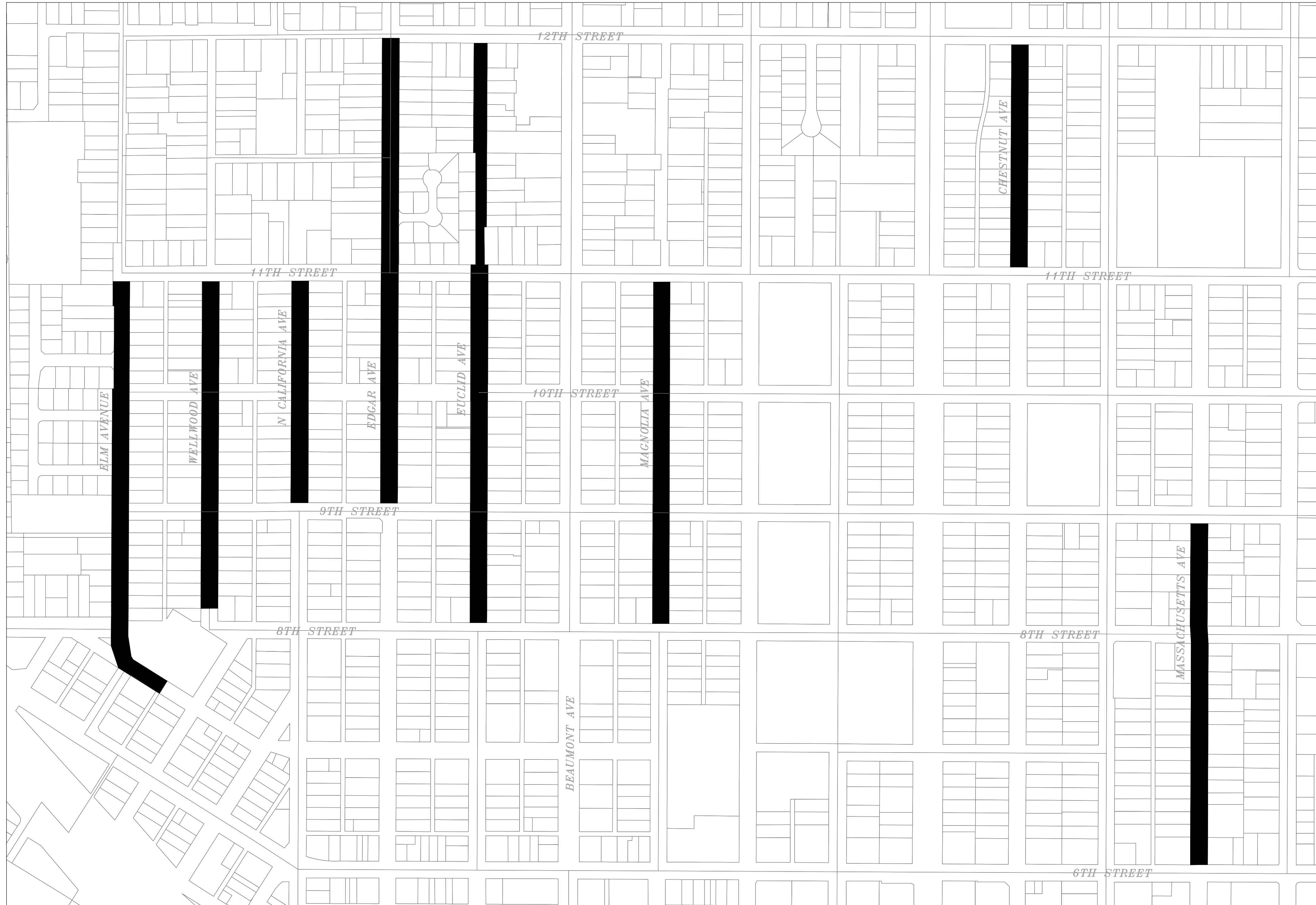


# CITY OF BEAUMONT, CALIFORNIA CITYWIDE SIDEWALK IMPROVEMENT PROJECT

## GENERAL NOTES

1. ALL WORK SHALL CONFORM TO THE REQUIREMENTS OF THE STANDARD SPECIFICATIONS FOR PUBLIC WORKS CONSTRUCTION, GREENBOOK, LATEST EDITION AND THE RIVERSIDE COUNTY TRANSPORTATION DEPARTMENT IMPROVEMENT STANDARDS AND SPECIFICATIONS, "LATEST EDITION," COUNTY ORDINANCE NO. 461 AND SUBSEQUENT AMENDMENTS.
2. CONTRACTOR SHALL COMPLY WITH THE STATE AND LOCAL SAFETY CODES DURING THE PROGRESS OF WORK.
3. CONTRACTOR SHALL MAINTAIN ADJACENT STREETS IN A NEAT, SAFE, CLEAN AND SANITARY CONDITION AT ALL TIMES AND TO THE SATISFACTION OF THE COUNTY'S OR DISTRICT'S INSPECTOR. THE ADJACENT STREETS SHALL BE KEPT CLEAN OF DEBRIS, WITH DUST AND OTHER NUISANCE BEING CONTROLLED AT ALL TIMES. THE DEVELOPER SHALL BE RESPONSIBLE FOR ANY CLEAN UP ON ADJACENT STREETS AFFECTED BY HIS CONSTRUCTION. METHOD OF STREET CLEANING SHALL BE DRY SWEEPING OF ALL PAVED AREAS.
4. CONTRACTOR SHALL BE RESPONSIBLE TO INSTALL AND MAINTAIN DURING CONSTRUCTION, REGULATORY GUIDE AND WARNING SIGNS WITHIN THE PROJECT LIMITS AND ITS SURROUNDINGS TO PROVIDE SAFE PASSAGE FOR THE TRAVELING PUBLIC AND WORKERS UNTIL THE FINAL COMPLETION AND ACCEPTANCE OF THE PROJECT BY THE CITY OF BEAUMONT.
5. CONTRACTOR AGREES THAT HE/SHE SHALL ASSUME SOLE AND COMPLETE RESPONSIBILITY FOR THE JOB SITE CONDITIONS DURING THE COURSE OF CONSTRUCTION OF THIS PROJECT, INCLUDING SAFETY OF ALL PERSONS AND PROPERTY, THAT THIS REQUIREMENT SHALL APPLY CONTINUOUSLY AND NOT BE LIMITED TO NORMAL WORKING HOURS AND THAT THE CONTRACTOR SHALL DEFEND, INDEMNIFY, AND HOLD THE OWNER, CITY OF BEAUMONT, AND THE DEVELOPER'S ENGINEER, HARMLESS FROM ANY AND ALL LIABILITY, REAL OR ALLEGED, IN CONNECTION WITH THE PERFORMANCE OF WORK ON THIS PROJECT EXCEPTING FOR LIABILITY ARISING FROM THE SOLE NEGLIGENCE OF THE OWNERS OR THE DEVELOPER'S ENGINEER.
6. CONTRACTOR SHALL BE THE RESPONSIBLE TO OBTAIN AN ENCROACHMENT PERMIT FOR ALL WORK PERFORMED WITHIN PUBLIC RIGHT-OF-WAY, DEDICATED AND ACCEPTED FOR PUBLIC USE; AND TO BE RESPONSIBLE FOR SATISFACTORY COMPLIANCE FOR ALL CURRENT ENVIRONMENTAL REGULATIONS DURING THE LIFE OF CONSTRUCTION ACTIVITIES FOR THIS PROJECT.
7. CONTRACTOR MUST PROVIDE CONSTRUCTION SCHEDULE TO THE CITY OF BEAUMONT AT LEAST 48 HOURS PRIOR TO BEGINNING CONSTRUCTION.
8. CONTRACTOR MUST CALL UNDERGROUND SERVICE ALERT AT 811 AT LEAST 48 HOURS BEFORE EXCAVATION.
9. CONTRACTOR SHALL BE RESPONSIBLE FOR THE INSTALLATION OF ADDITIONAL SIGNS AND MARKINGS NOT INCLUDED IN THE SIGNING AND STRIPING PLAN WITHIN THE PROJECT AREAS, OR ON ROADWAYS ADJACENT TO THE PROJECT BOUNDARIES, UPON THE REQUEST OF THE DIRECTOR OF PUBLIC WORKS OR HIS DESIGNEE TO IMPROVE TRAFFIC SAFETY ON THE ROADS.
10. ANY PRIVATE DRAINAGE FACILITIES SHOWN ON THESE PLANS ARE FOR INFORMATION ONLY. BY SIGNING THESE IMPROVEMENT PLANS, NO REVIEW OR APPROVAL OF THESE PRIVATE FACILITIES ARE IMPLIED OR INTENDED BY CITY OF BEAUMONT PUBLIC WORKS DEPT.
11. FOR ALL DRIVEWAY RECONSTRUCTION BEYOND RIGHT-OF-WAY, PROOF OF DRIVEWAY OWNER NOTIFICATION IS REQUIRED PRIOR TO CONSTRUCTION.



## SHEET INDEX

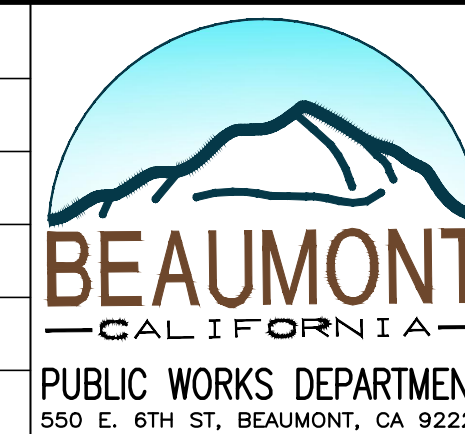
1. TITLE SHEET
2. ELM AVENUE 1
3. ELM AVENUE 2
4. ELM AVENUE 3
5. WELLWOOD AVE 1
6. WELLWOOD AVE 2
7. WELLWOOD AVE 3
8. N. CALIFORNIA AVE 1
9. N. CALIFORNIA AVE 2
10. EDGAR AVE 1
11. EDGAR AVE 2
12. EDGAR AVE 3
13. EDGAR AVE 4
14. EUCLID AVE 1
15. EUCLID AVE 2
16. EUCLID AVE 3
17. EUCLID AVE 4
18. EUCLID AVE 5
19. MAGNOLIA AVE 1
20. MAGNOLIA AVE 2
21. MAGNOLIA AVE 3
22. CHESTNUT AVE 1
23. CHESTNUT AVE 2
24. MASSACHUSETTS AVE 1
25. MASSACHUSETTS AVE 2
26. MASSACHUSETTS AVE 3



BENCHMARK:  
THE TOP OF CURB AT THE POINT OF CURVATURE AT THE NORTHEAST CORNER OF THE NORTHWEST CURB RETURN AT THE INTERSECTION OF HIGHLAND SPRINGS AVENUE AND 2ND STREET.  
ELEV. 2559.03, TBM

BY	MARK	DESCRIPTION	APPR. DATE
ENGINEER		R E V I S I O N S	CITY

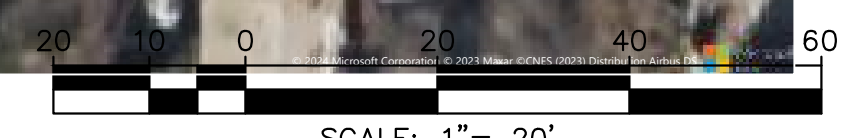
DESIGN BY: DC  
DRAWN BY: DC  
CHECKED BY: RLV  
SCALE: 1"=20'  
DATE: 2/6/2024  
JOB NUMBER:



REVIEWED BY: \_\_\_\_\_ DATE: \_\_\_\_\_  
STAFF ENGINEER  
RECOMMENDED BY: *Dustin Oltman* DATE: 2-7-2024  
PRINCIPAL ENGINEER  
APPROVED BY: *Paul H. ...* DATE: 02/09/2024  
CITY ENGINEER

**CITY OF BEAUMONT, CALIFORNIA**  
IMPROVEMENT PLANS FOR:  
**CITYWIDE SIDEWALK IMPROVEMENTS**  
CIP R-24  
**TITLE SHEET**

S H E E T  
1  
OF 26 SHEETS  
FILE NO:



BENCHMARK:  
THE TOP OF CURB AT THE POINT OF CURVATURE AT THE NORTHEAST CORNER OF THE NORTHWEST CURB RETURN AT THE INTERSECTION OF HIGHLAND SPRINGS AVENUE AND 2ND STREET.  
ELEV. 2559.03, TBM

BY	MARK	DESCRIPTION	APPR.	DATE
ENGINEER		REVISIONS		CITY

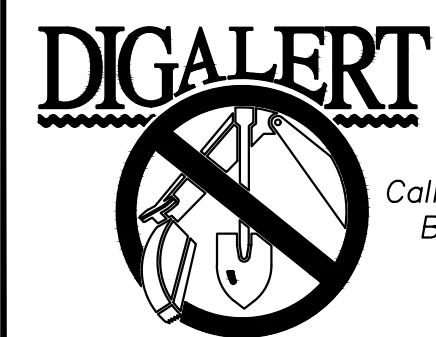
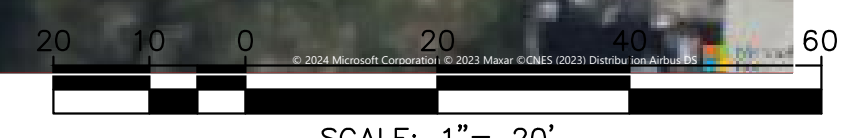
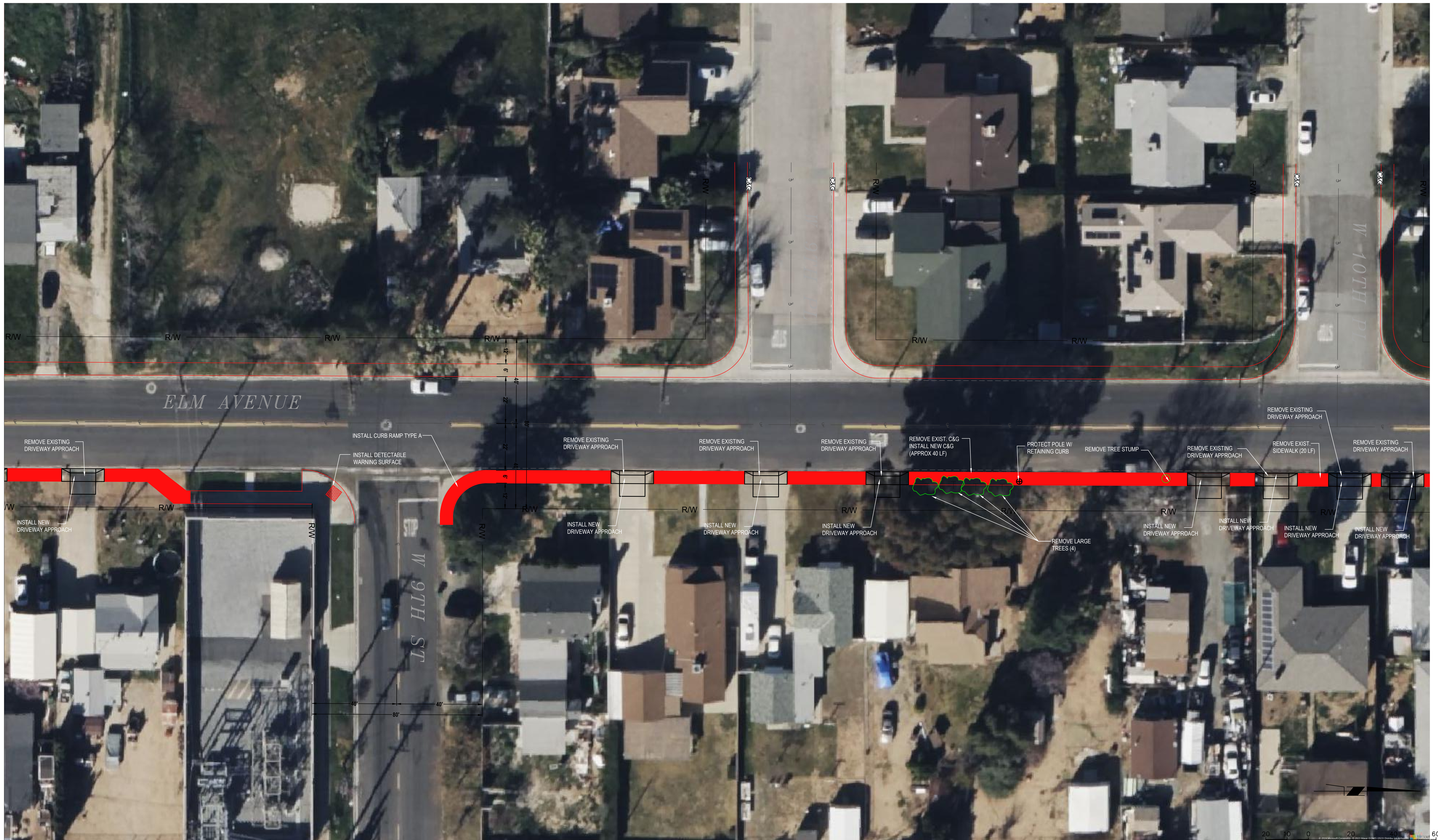
DESIGN BY: DC  
DRAWN BY: DC  
CHECKED BY: RLV  
SCALE: 1"=20'  
DATE: 2/6/2024  
JOB NUMBER:



REVIEWED BY: \_\_\_\_\_ DATE: \_\_\_\_\_  
STAFF ENGINEER  
RECOMMENDED BY: *Dustin Altman* DATE: 2-7-2024  
PRINCIPAL ENGINEER  
APPROVED BY: *Patricia Williams* DATE: 02/09/2024  
CITY ENGINEER

CITY OF BEAUMONT, CALIFORNIA  
IMPROVEMENT PLANS FOR:  
CITYWIDE SIDEWALK IMPROVEMENTS  
CIP R-24  
ELM AVENUE 1

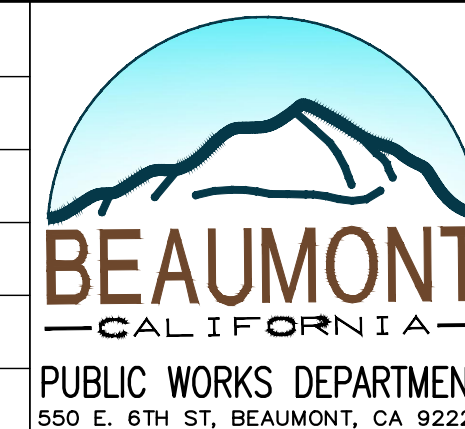
SHEET  
2  
OF 26 SHEETS  
FILE NO:



BENCHMARK:  
THE TOP OF CURB AT THE POINT OF  
CURVATURE AT THE NORTHEAST  
CORNER OF THE NORTHWEST CURB  
RETURN AT THE INTERSECTION OF  
HIGHLAND SPRINGS AVENUE AND 2ND  
STREET.  
ELEV. 2559.03, TBM

BY	MARK	DESCRIPTION	APPR. DATE
ENGINEER		REVISIONS	CITY

DESIGN BY:  
DC  
DRAWN BY:  
DC  
CHECKED BY:  
RLV  
SCALE:  
1"=20'  
DATE:  
2/6/2024  
JOB NUMBER:



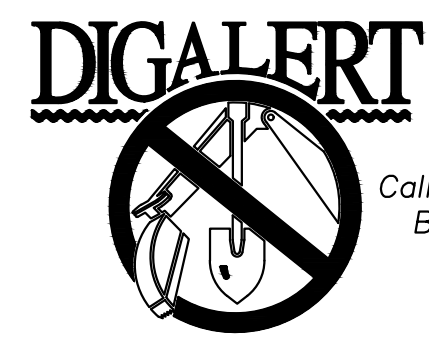
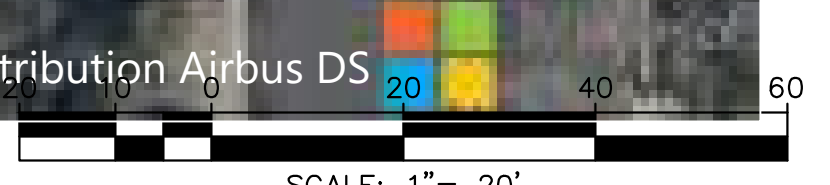
REVIEWED BY: \_\_\_\_\_ DATE: \_\_\_\_\_  
STAFF ENGINEER  
RECOMMENDED BY: *Dustin Ottens* DATE: 2-7-2024  
PRINCIPAL ENGINEER  
APPROVED BY: *Patricia...* DATE: 02/09/2024  
CITY ENGINEER

CITY OF BEAUMONT, CALIFORNIA  
IMPROVEMENT PLANS FOR:  
CITYWIDE SIDEWALK IMPROVEMENTS  
CIP R-24  
ELM AVENUE 2

SHEET  
3  
OF 26 SHEETS  
FILE NO:



© 2024 Microsoft Corporation © 2023 Maxar © CNES (2023) Distribution Airbus DS



BENCHMARK:  
THE TOP OF CURB AT THE POINT OF  
CURVATURE AT THE NORTHEAST  
CORNER OF THE NORTHWEST CURB  
RETURN AT THE INTERSECTION OF  
HIGHLAND SPRINGS AVENUE AND 2ND  
STREET.  
ELEV. 2559.03, TBM

BY	MARK	DESCRIPTION	APPR. DATE
ENGINEER		REVISIONS	CITY

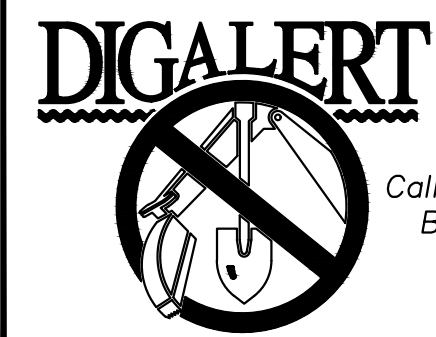
DESIGN BY:  
DC  
DRAWN BY:  
DC  
CHECKED BY:  
RLV  
SCALE:  
1"=20'  
DATE:  
2/6/2024  
JOB NUMBER:



REVIEWED BY: \_\_\_\_\_ DATE: \_\_\_\_\_  
STAFF ENGINEER  
RECOMMENDED BY: *Dustin Allen* DATE: 2-7-2024  
PRINCIPAL ENGINEER  
APPROVED BY: *Patricia* DATE: 02/09/2024  
CITY ENGINEER

CITY OF BEAUMONT, CALIFORNIA  
IMPROVEMENT PLANS FOR:  
CITYWIDE SIDEWALK IMPROVEMENTS  
CIP R-24  
ELM AVENUE 3

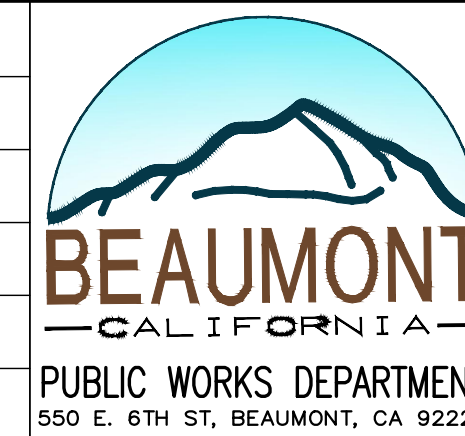
SHEET  
4  
OF 26 SHEETS  
FILE NO:



BENCHMARK:  
THE TOP OF CURB AT THE POINT OF  
CURVATURE AT THE NORTHEAST  
CORNER OF THE NORTHWEST CURB  
RETURN AT THE INTERSECTION OF  
HIGHLAND SPRINGS AVENUE AND 2ND  
STREET.  
ELEV. 2559.03, TBM

BY	MARK	DESCRIPTION	APPR.	DATE
ENGINEER		REVISIONS		CITY

DESIGN BY:  
DC  
DRAWN BY:  
DC  
CHECKED BY:  
RLV  
SCALE:  
1"=20'  
DATE:  
2/6/2024  
JOB NUMBER:



REVIEWED BY: \_\_\_\_\_ DATE: \_\_\_\_\_  
STAFF ENGINEER  
RECOMMENDED BY: *Dustin Ott* DATE: 2-7-2024  
PRINCIPAL ENGINEER  
APPROVED BY: *Patricia* DATE: 02/09/2024  
CITY ENGINEER

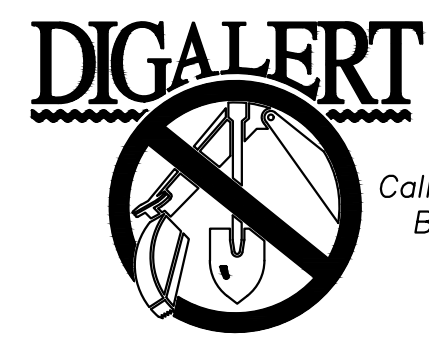
CITY OF BEAUMONT, CALIFORNIA  
IMPROVEMENT PLANS FOR:  
CITYWIDE SIDEWALK IMPROVEMENTS  
CIP R-24  
WELLWOOD AVENUE 1

SHEET  
5  
OF 26 SHEETS  
FILE NO:



© 2024 Microsoft Corporation © 2023 Maxar © CNES (2023) Distribution Airbus DS

SCALE: 1" = 20'

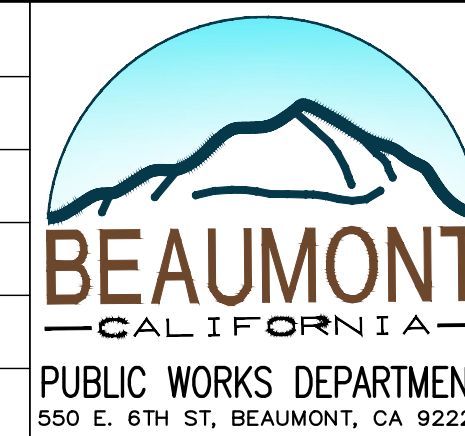


Call 2 Working Days  
Before You Dig!  
811

BENCHMARK:  
THE TOP OF CURB AT THE POINT OF  
CURVATURE AT THE NORTHEAST  
CORNER OF THE NORTHWEST CURB  
RETURN AT THE INTERSECTION OF  
HIGHLAND SPRINGS AVENUE AND 2ND  
STREET.  
ELEV. 2559.03, TBM

BY	MARK	DESCRIPTION	APPR.	DATE
ENGINEER		REVISIONS		CITY

DESIGN BY:  
DC  
DRAWN BY:  
DC  
CHECKED BY:  
RLV  
SCALE:  
1"=20'  
DATE:  
2/6/2024  
JOB NUMBER:



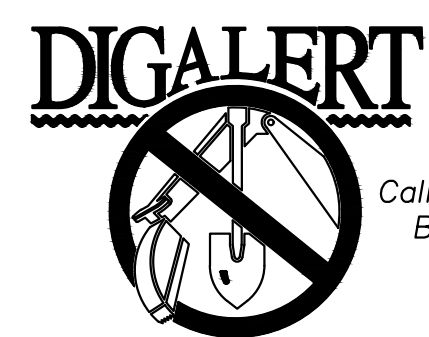
REVIEWED BY: \_\_\_\_\_ DATE: \_\_\_\_\_  
STAFF ENGINEER  
RECOMMENDED BY: *Dustin Adams* DATE: 2-7-2024  
PRINCIPAL ENGINEER  
APPROVED BY: *Patricia* DATE: 02/09/2024  
CITY ENGINEER

CITY OF BEAUMONT, CALIFORNIA  
IMPROVEMENT PLANS FOR:  
CITYWIDE SIDEWALK IMPROVEMENTS  
CIP R-24  
WELLWOOD AVENUE 2

SHEET  
6  
OF 26 SHEETS  
FILE NO:



© 2024 Microsoft Corporation © 2023 Maxar ©CNES (2023) Distribution Airbus DS



BENCHMARK:  
THE TOP OF CURB AT THE POINT OF  
CURVATURE AT THE NORTHEAST  
CORNER OF THE NORTHWEST CURB  
RETURN AT THE INTERSECTION OF  
HIGHLAND SPRINGS AVENUE AND 2ND  
STREET.  
ELEV. 2559.03, TBM

BY	MARK	DESCRIPTION	APPR.	DATE
ENGINEER		REVISIONS		CITY

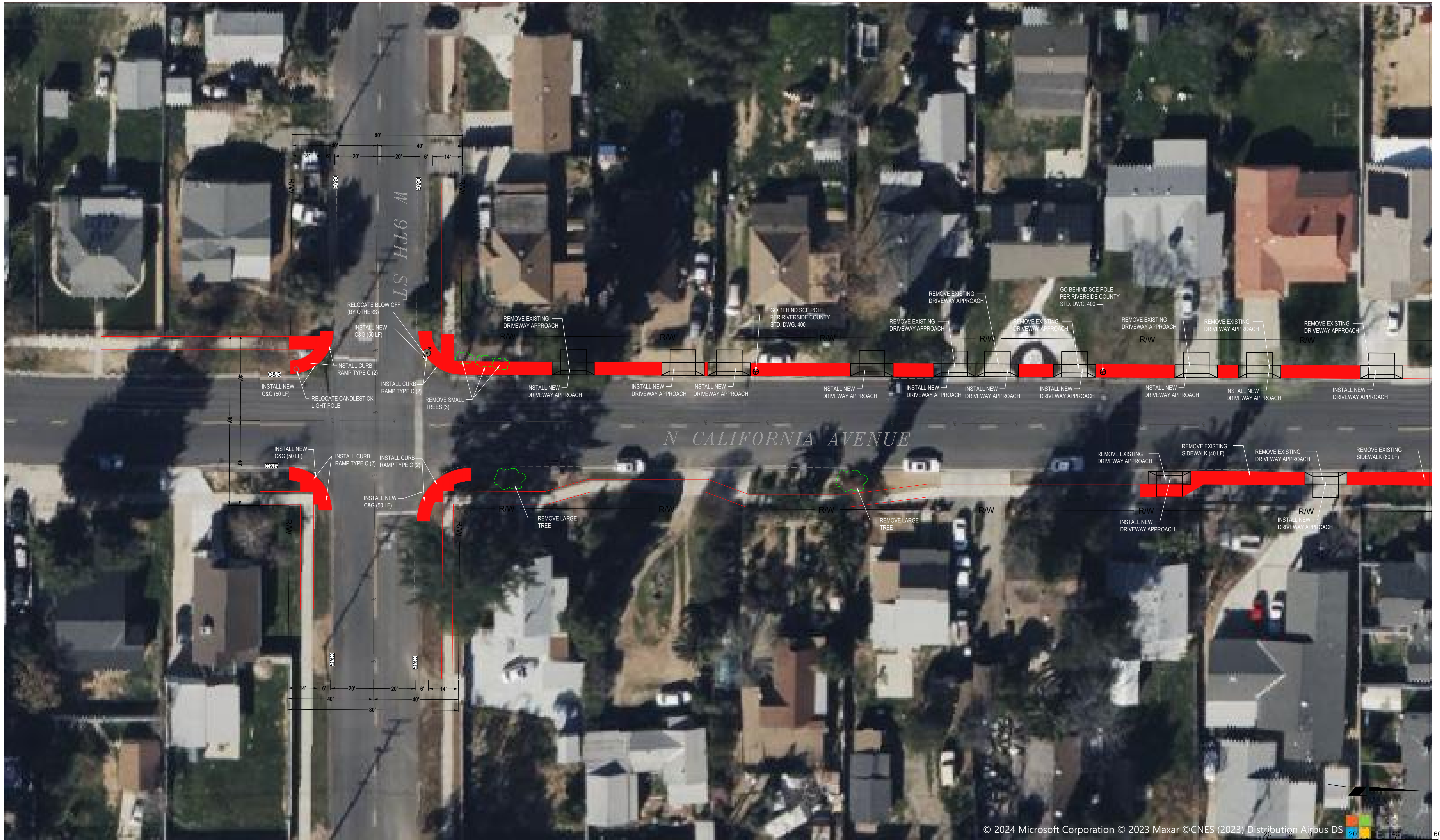
DESIGN BY:  
DC  
DRAWN BY:  
DC  
CHECKED BY:  
RLV  
SCALE:  
1"=20'  
DATE:  
2/6/2024  
JOB NUMBER:



REVIEWED BY: \_\_\_\_\_ DATE: \_\_\_\_\_  
STAFF ENGINEER  
RECOMMENDED BY: *Dustin* DATE: 2-7-2024  
PRINCIPAL ENGINEER  
APPROVED BY: *Patricia* DATE: 02/09/2024  
CITY ENGINEER

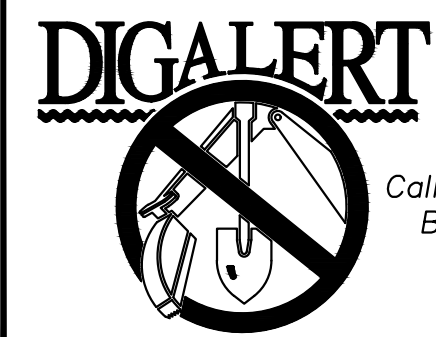
CITY OF BEAUMONT, CALIFORNIA  
IMPROVEMENT PLANS FOR:  
CITYWIDE SIDEWALK IMPROVEMENTS  
CIP R-24  
WELLWOOD AVENUE 3

SHEET  
7  
OF 26 SHEETS  
FILE NO:



© 2024 Microsoft Corporation © 2023 Maxar ©CNES (2023) Distribution Airbus DS

SCALE: 1" = 20'

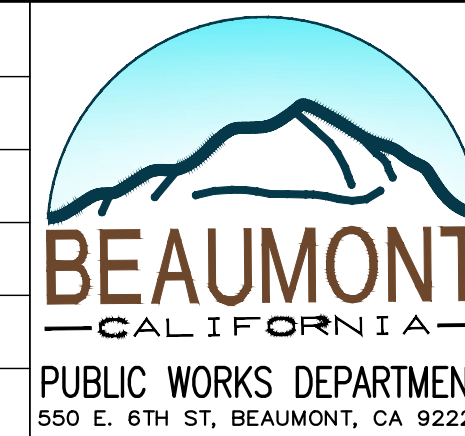


Call 2 Working Days  
Before You Dig!  
811

BENCHMARK:  
THE TOP OF CURB AT THE POINT OF  
CURVATURE AT THE NORTHEAST  
CORNER OF THE NORTHWEST CURB  
RETURN AT THE INTERSECTION OF  
HIGHLAND SPRINGS AVENUE AND 2ND  
STREET.  
ELEV. 2559.03, TBM

BY	MARK	DESCRIPTION	APPR.	DATE
ENGINEER		REVISIONS		CITY

DESIGN BY:  
DC  
DRAWN BY:  
DC  
CHECKED BY:  
RLV  
SCALE:  
1"=20'  
DATE:  
2/6/2024  
JOB NUMBER:



REVIEWED BY: \_\_\_\_\_ DATE: \_\_\_\_\_  
STAFF ENGINEER  
RECOMMENDED BY: *Dustin Oldham* DATE: 2-7-2024  
PRINCIPAL ENGINEER  
APPROVED BY: *Patricia...* DATE: 02/09/2024  
CITY ENGINEER

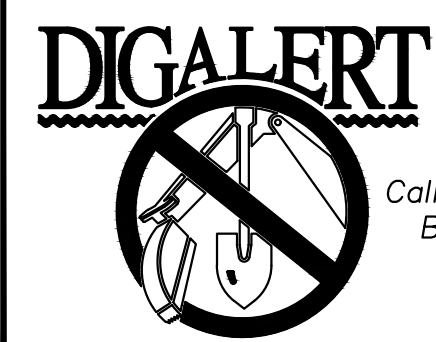
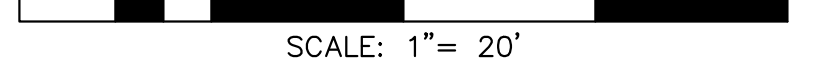
CITY OF BEAUMONT, CALIFORNIA  
IMPROVEMENT PLANS FOR:  
CITYWIDE SIDEWALK IMPROVEMENTS  
CIP R-24  
N. CALIFORNIA AVENUE 1

SHEET  
8  
OF 26 SHEETS  
FILE NO:





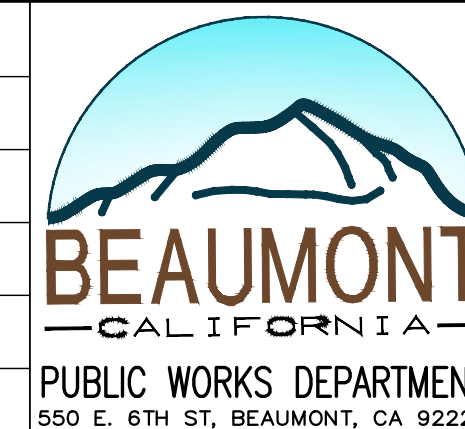
© 2024 Microsoft Corporation © 2023 Maxar ©CNES (2023) Distribution Airbus DS



BENCHMARK:  
THE TOP OF CURB AT THE POINT OF CURVATURE AT THE NORTHEAST CORNER OF THE NORTHWEST CURB RETURN AT THE INTERSECTION OF HIGHLAND SPRINGS AVENUE AND 2ND STREET.  
ELEV. 2559.03, TBM

BY	MARK	DESCRIPTION	APPR.	DATE
ENGINEER		REVISIONS		CITY

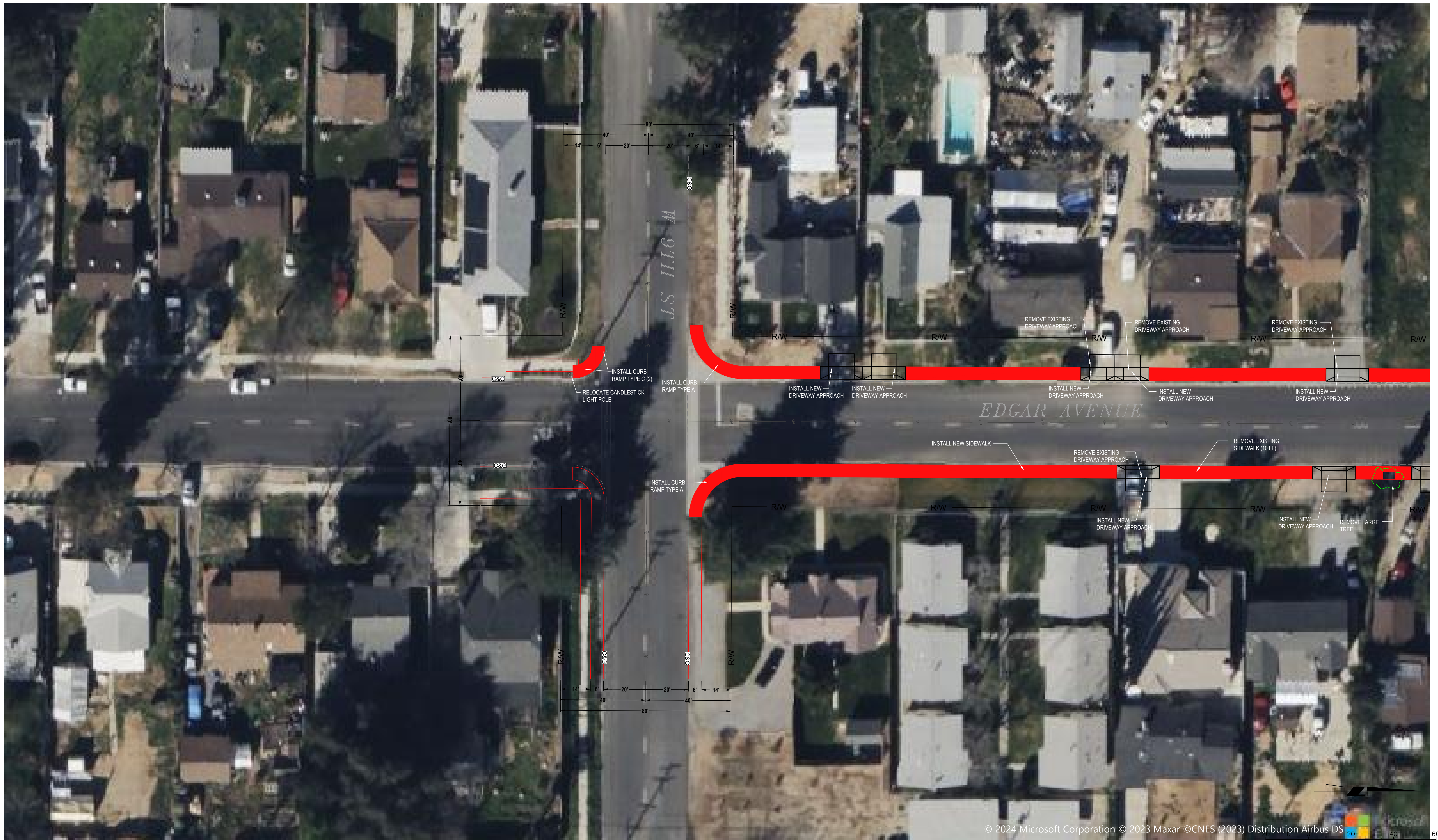
DESIGN BY: DC  
DRAWN BY: DC  
CHECKED BY: RLV  
SCALE: 1"=20'  
DATE: 2/6/2024  
JOB NUMBER:



REVIEWED BY: \_\_\_\_\_ DATE: \_\_\_\_\_  
STAFF ENGINEER  
RECOMMENDED BY: *Dustin O'Brien* DATE: 2-7-2024  
PRINCIPAL ENGINEER  
APPROVED BY: *Patricia...* DATE: 02/09/2024  
CITY ENGINEER

CITY OF BEAUMONT, CALIFORNIA  
IMPROVEMENT PLANS FOR:  
CITYWIDE SIDEWALK IMPROVEMENTS  
CIP R-24  
N. CALIFORNIA AVENUE 2

SHEET  
9  
OF 26 SHEETS  
FILE NO:



© 2024 Microsoft Corporation © 2023 Maxar © CNES (2023) Distribution Airbus DS

SCALE: 1" = 20'



BENCHMARK:  
THE TOP OF CURB AT THE POINT OF CURVATURE AT THE NORTHEAST CORNER OF THE INTERSECTION OF HIGHLAND SPRINGS AVENUE AND 2ND STREET.  
ELEV. 2559.03, TBM

BY	MARK	DESCRIPTION	APPR.	DATE
ENGINEER		REVISIONS		CITY

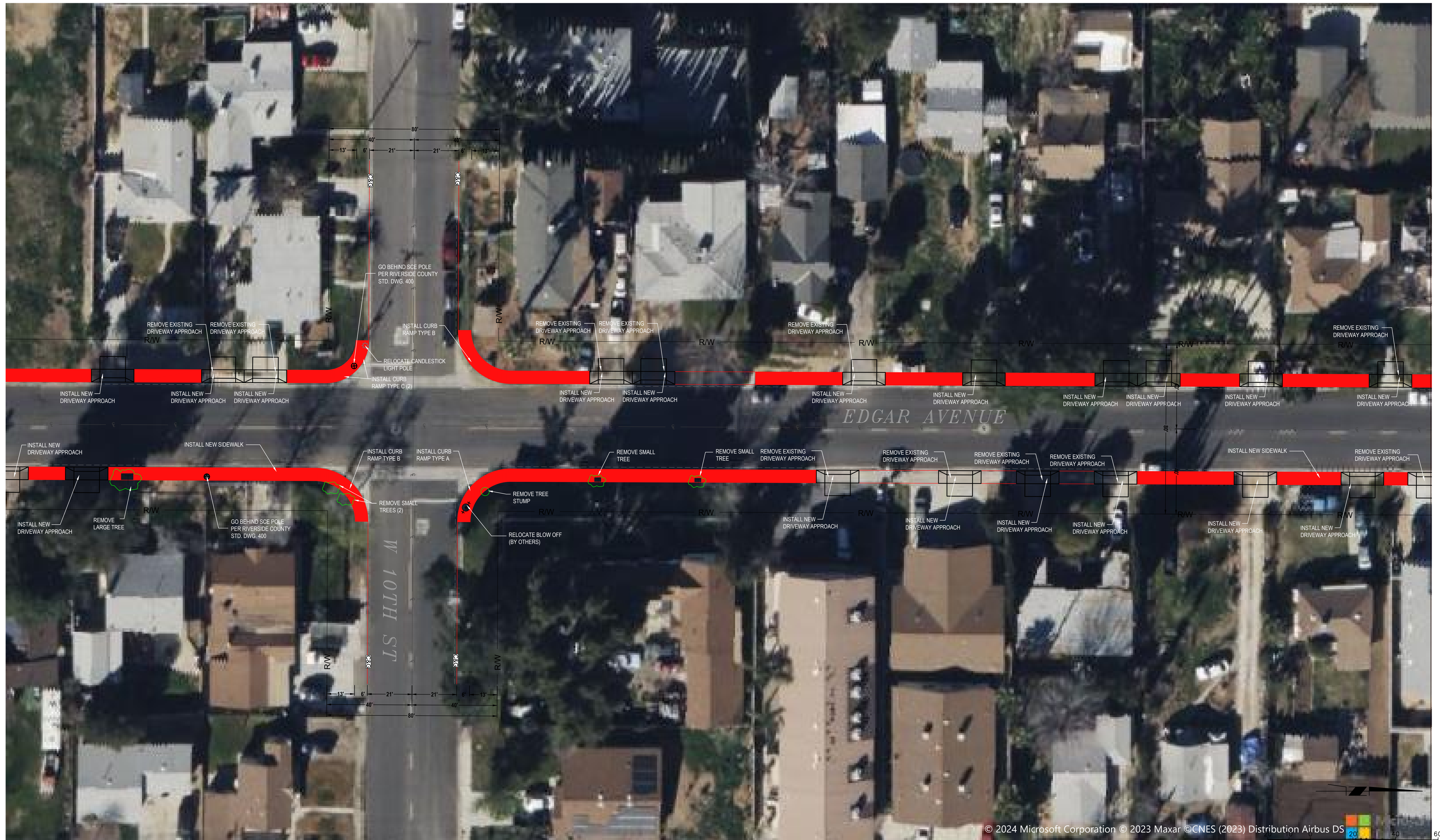
DESIGN BY: DC  
DRAWN BY: DC  
CHECKED BY: RLV  
SCALE: 1"=20'  
DATE: 2/6/2024  
JOB NUMBER:



REVIEWED BY: \_\_\_\_\_ DATE: \_\_\_\_\_  
STAFF ENGINEER  
RECOMMENDED BY: *Dustin Oltman* DATE: 2-7-2024  
PRINCIPAL ENGINEER  
APPROVED BY: *Patricia...* DATE: 02/09/2024  
CITY ENGINEER

CITY OF BEAUMONT, CALIFORNIA  
IMPROVEMENT PLANS FOR:  
CITYWIDE SIDEWALK IMPROVEMENTS  
CIP R-24  
EDGAR AVENUE 1

SHEET  
10  
OF 26 SHEETS  
FILE NO:



© 2024 Microsoft Corporation © 2023 Maxar ©CNES (2023) Distribution Airbus DS  
 SCALE: 1" = 20'



BENCHMARK:  
 THE TOP OF CURB AT THE POINT OF CURVATURE AT THE NORTHEAST CORNER OF THE NORTHWEST CURB RETURN AT THE INTERSECTION OF HIGHLAND SPRINGS AVENUE AND 2ND STREET.  
 ELEV. 2559.03, TBM

BY	MARK	DESCRIPTION	APPR. DATE
ENGINEER		REVISIONS	CITY

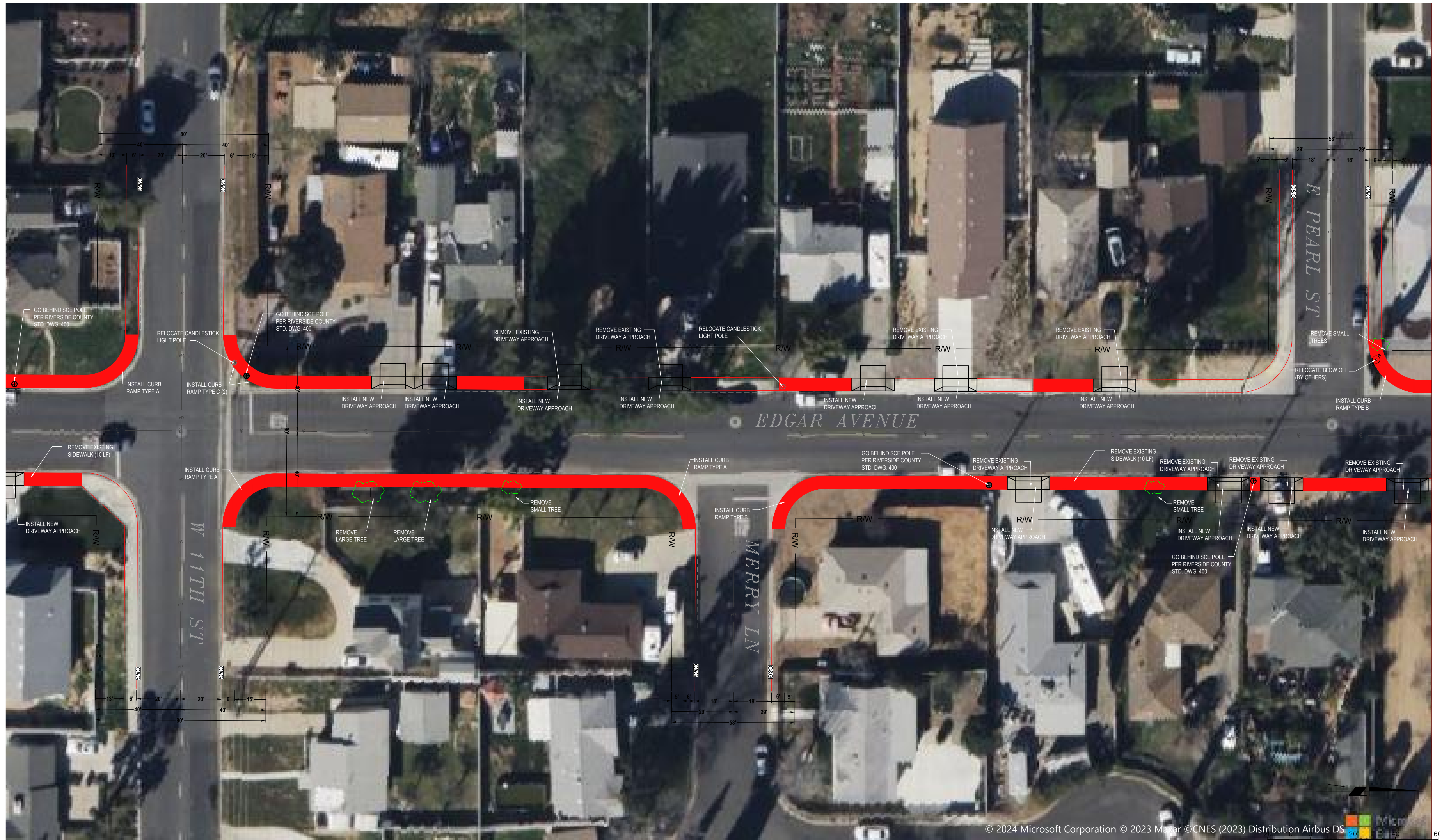
DESIGN BY: DC  
 DRAWN BY: DC  
 CHECKED BY: RLV  
 SCALE: 1"=20'  
 DATE: 2/6/2024  
 JOB NUMBER:



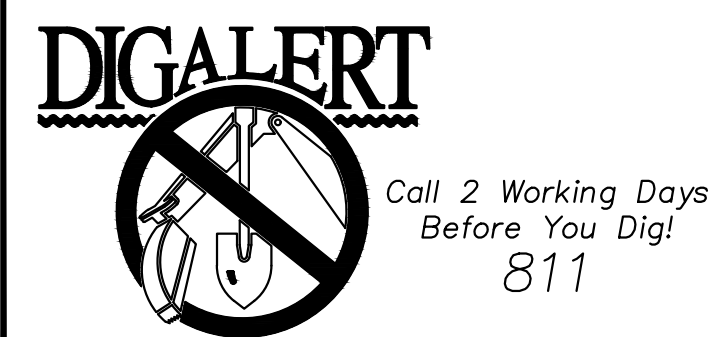
REVIEWED BY: \_\_\_\_\_ DATE: \_\_\_\_\_  
 STAFF ENGINEER  
 RECOMMENDED BY: *[Signature]* DATE: 2-7-2024  
 PRINCIPAL ENGINEER  
 APPROVED BY: *[Signature]* DATE: 02/09/2024  
 CITY ENGINEER

CITY OF BEAUMONT, CALIFORNIA  
 IMPROVEMENT PLANS FOR:  
 CITYWIDE SIDEWALK IMPROVEMENTS  
 CIP R-24  
 EDGAR AVENUE 2

SHEET  
 11  
 OF 26 SHEETS  
 FILE NO:



© 2024 Microsoft Corporation © 2023 Maxar © CNES (2023) Distribution Airbus DS  
 SCALE: 1" = 20'



BENCHMARK:  
 THE TOP OF CURB AT THE POINT OF CURVATURE AT THE NORTHEAST CORNER OF THE NORTHEAST RETURN AT THE INTERSECTION OF HIGHLAND SPRINGS AVENUE AND 2ND STREET.  
 ELEV. 2559.03, TBM

BY	MARK	DESCRIPTION	APPR.	DATE
ENGINEER		REVISIONS		CITY

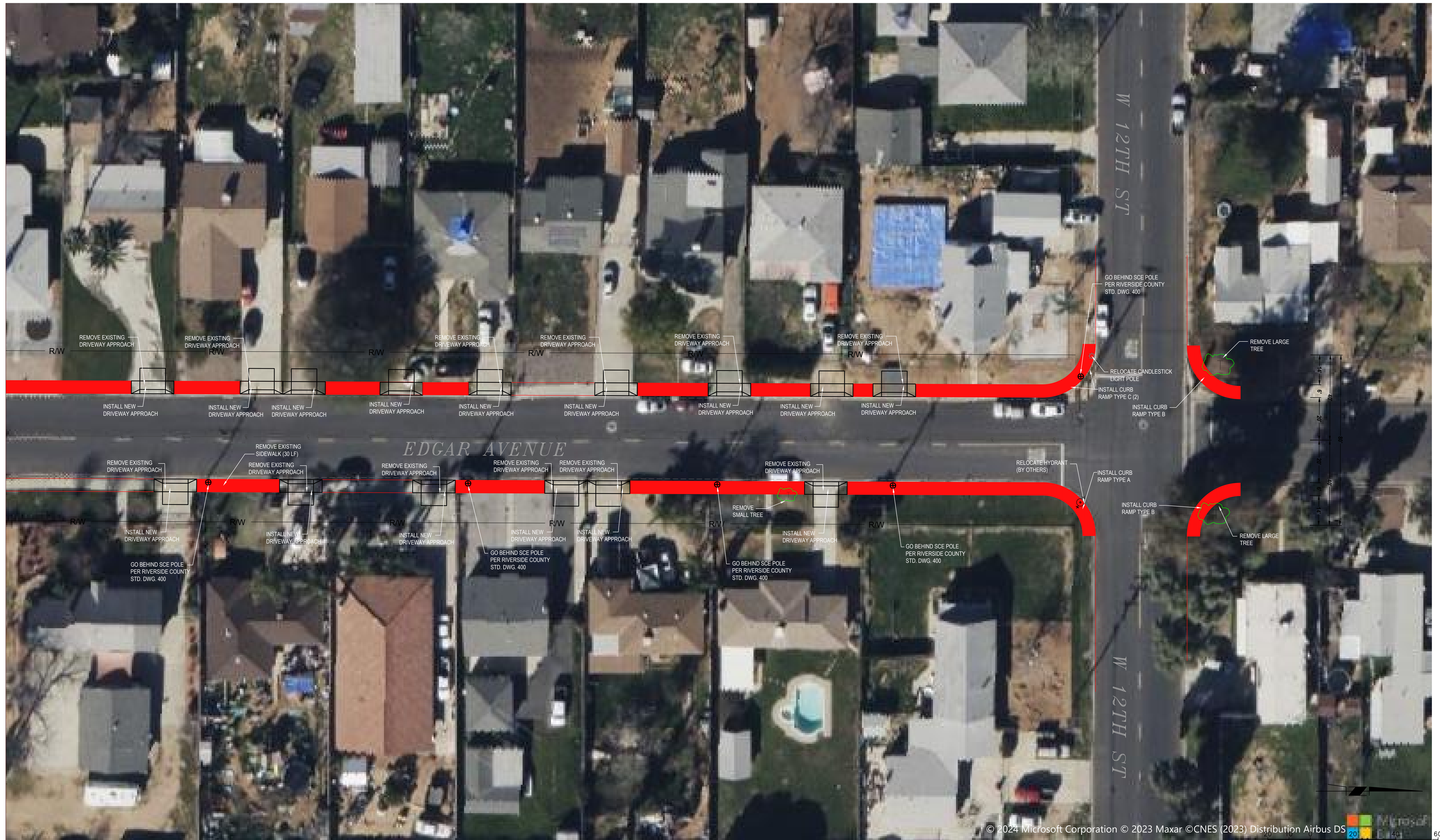
DESIGN BY: DC  
 DRAWN BY: DC  
 CHECKED BY: RLV  
 SCALE: 1"=20'  
 DATE: 2/6/2024  
 JOB NUMBER:



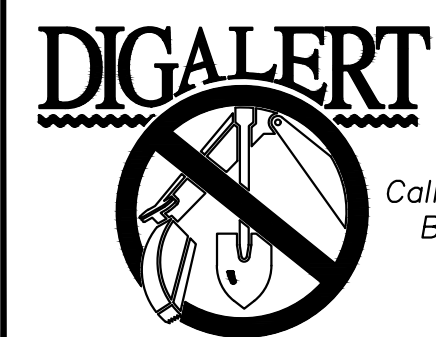
REVIEWED BY: \_\_\_\_\_ DATE: \_\_\_\_\_  
 STAFF ENGINEER  
 RECOMMENDED BY: *Dustin Allen* DATE: 2-7-2024  
 PRINCIPAL ENGINEER  
 APPROVED BY: *Patricia* DATE: 02/09/2024  
 CITY ENGINEER

CITY OF BEAUMONT, CALIFORNIA  
 IMPROVEMENT PLANS FOR:  
 CITYWIDE SIDEWALK IMPROVEMENTS  
 CIP R-24  
 EDGAR AVENUE 3

SHEET  
 12  
 OF 26 SHEETS  
 FILE NO:



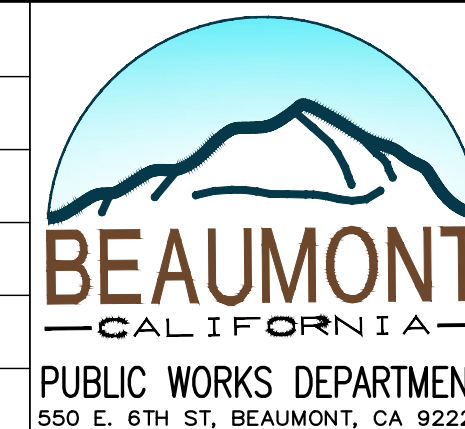
© 2024 Microsoft Corporation © 2023 Maxar ©CNES (2023) Distribution Airbus DS 20 40 60  
 SCALE: 1" = 20'



BENCHMARK:  
 THE TOP OF CURB AT THE POINT OF  
 CURVATURE AT THE NORTHEAST  
 CORNER OF THE NORTHEAST  
 RETURN AT THE INTERSECTION OF  
 HIGHLAND SPRINGS AVENUE AND 2ND  
 STREET.  
 ELEV. 2559.03, TBM

BY	MARK	DESCRIPTION	APPR. DATE
ENGINEER		REVISIONS	CITY

DESIGN BY:  
 DC  
 DRAWN BY:  
 DC  
 CHECKED BY:  
 RLV  
 SCALE:  
 1"=20'  
 DATE:  
 2/6/2024  
 JOB NUMBER:



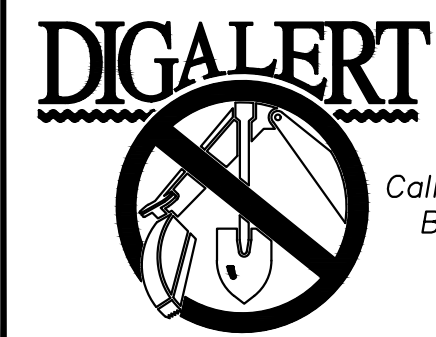
REVIEWED BY: \_\_\_\_\_ DATE: \_\_\_\_\_  
 STAFF ENGINEER  
 RECOMMENDED BY: *Dustin Allen* DATE: 2-7-2024  
 PRINCIPAL ENGINEER  
 APPROVED BY: *Patricia* DATE: 02/09/2024  
 CITY ENGINEER

CITY OF BEAUMONT, CALIFORNIA  
 IMPROVEMENT PLANS FOR:  
 CITYWIDE SIDEWALK IMPROVEMENTS  
 CIP R-24  
 EDGAR AVENUE 4

SHEET  
 13  
 OF 26 SHEETS  
 FILE NO:



© 2024 Microsoft Corporation © 2023 Maxar ©CNES (2023) Distribution Airbus DS

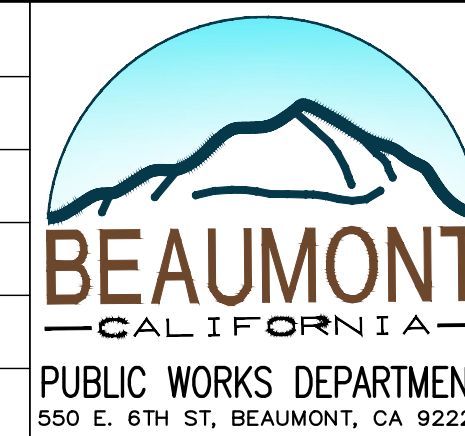


Call 2 Working Days  
Before You Dig!  
811

BENCHMARK:  
THE TOP OF CURB AT THE POINT OF  
CURVATURE AT THE NORTHEAST  
CORNER OF THE NORTHWEST CURB  
RETURN AT THE INTERSECTION OF  
HIGHLAND SPRINGS AVENUE AND 2ND  
STREET.  
ELEV. 2559.03, TBM

BY	MARK	DESCRIPTION	APPR.	DATE
ENGINEER		REVISIONS		CITY

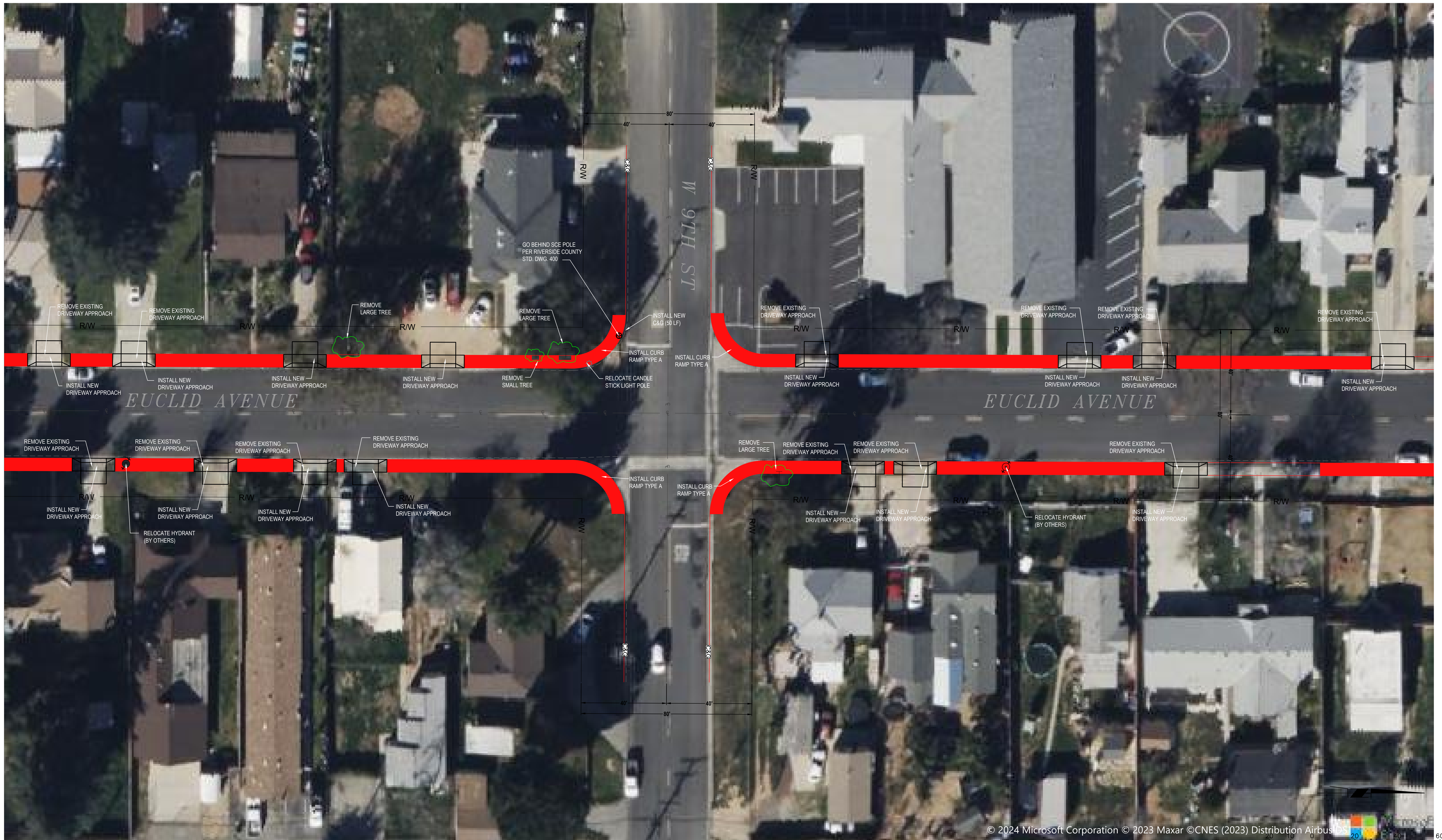
DESIGN BY:  
DC  
DRAWN BY:  
DC  
CHECKED BY:  
RLV  
SCALE:  
1"=20'  
DATE:  
2/6/2024  
JOB NUMBER:



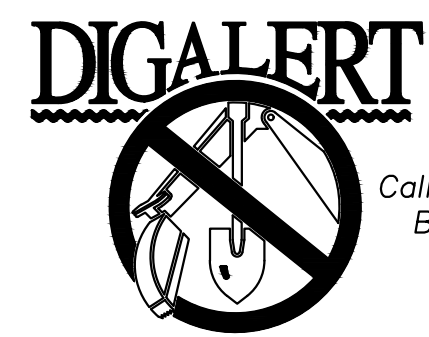
REVIEWED BY: \_\_\_\_\_ DATE: \_\_\_\_\_  
STAFF ENGINEER  
RECOMMENDED BY: *Dustin Altman* DATE: 2-7-2024  
PRINCIPAL ENGINEER  
APPROVED BY: *Patricia...* DATE: 02/09/2024  
CITY ENGINEER

CITY OF BEAUMONT, CALIFORNIA  
IMPROVEMENT PLANS FOR:  
CITYWIDE SIDEWALK IMPROVEMENTS  
CIP R-24  
EUCLID AVENUE 1

SHEET  
14  
OF 26 SHEETS  
FILE NO:



© 2024 Microsoft Corporation © 2023 Maxar ©CNES (2023) Distribution Airbus DS

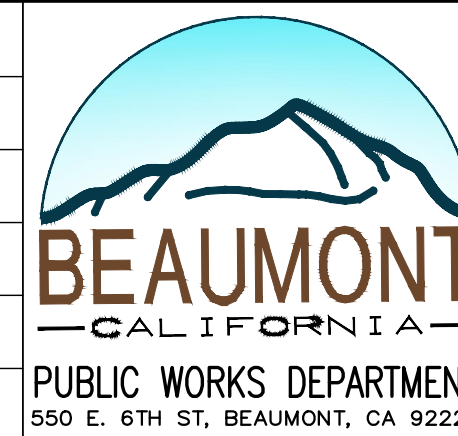


Call 2 Working Days  
Before You Dig!  
811

BENCHMARK:  
THE TOP OF CURB AT THE POINT OF  
CURVATURE AT THE NORTHEAST  
CORNER OF THE NORTHWEST  
RETURN AT THE INTERSECTION OF  
HIGHLAND SPRINGS AVENUE AND 2ND  
STREET.  
ELEV. 2559.03, TBM

BY	MARK	DESCRIPTION	APPR. DATE
ENGINEER		REVISIONS	CITY

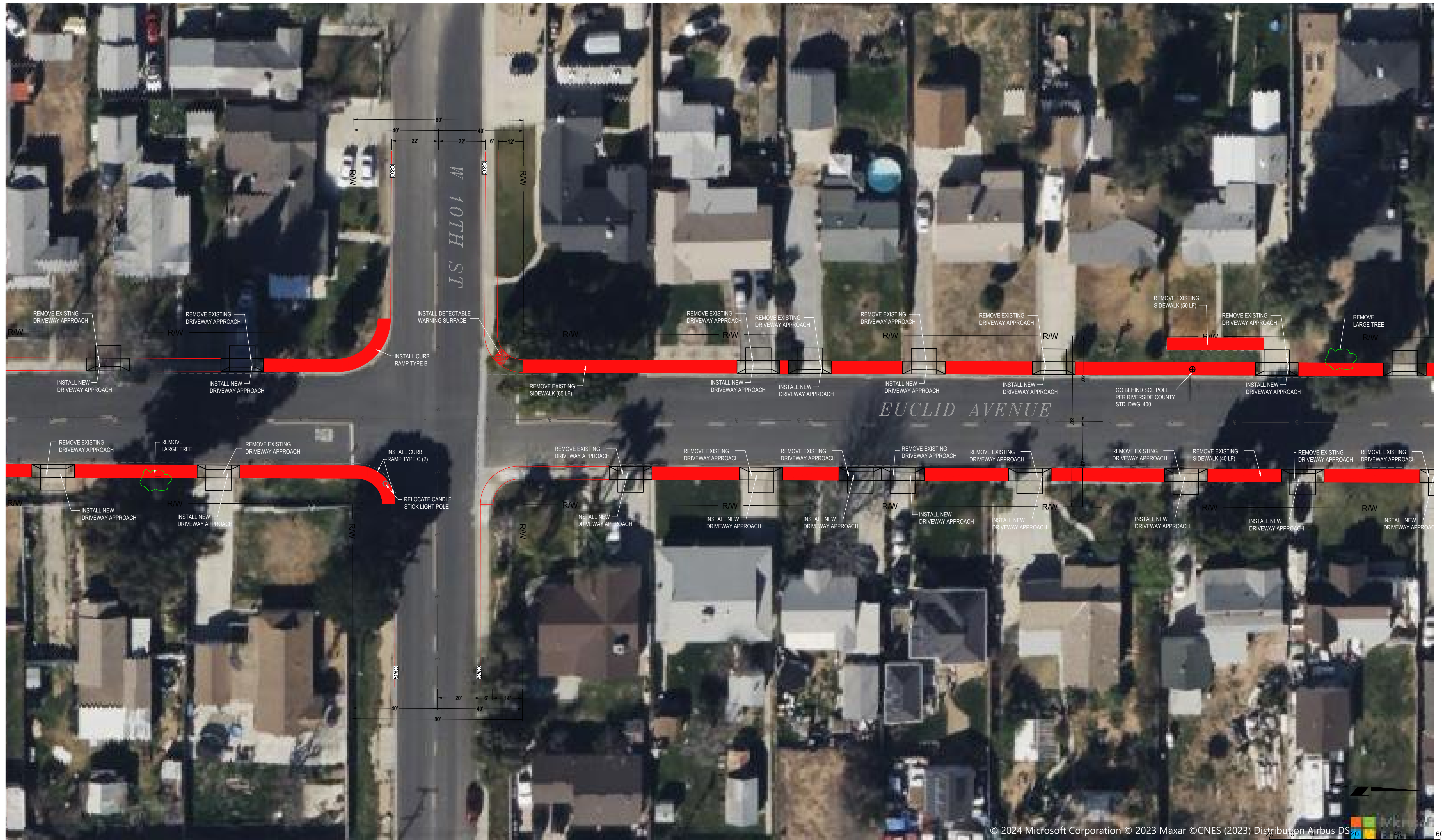
DESIGN BY: DC  
DRAWN BY: DC  
CHECKED BY: RLV  
SCALE: 1"=20'  
DATE: 2/6/2024  
JOB NUMBER:



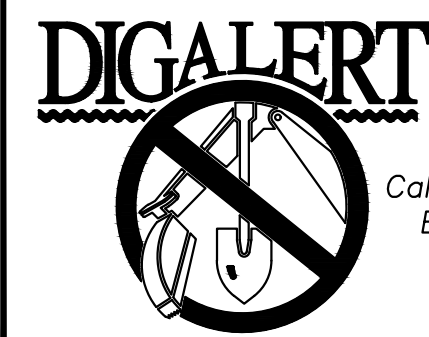
REVIEWED BY: \_\_\_\_\_ DATE: \_\_\_\_\_  
STAFF ENGINEER  
RECOMMENDED BY: *Dustin Oltman* DATE: 2-7-2024  
PRINCIPAL ENGINEER  
APPROVED BY: *Patricia...* DATE: 02/09/2024  
CITY ENGINEER

CITY OF BEAUMONT, CALIFORNIA  
IMPROVEMENT PLANS FOR:  
CITYWIDE SIDEWALK IMPROVEMENTS  
CIP R-24  
EUCLID AVENUE 2

SHEET  
15  
OF 26 SHEETS  
FILE NO:



© 2024 Microsoft Corporation © 2023 Maxar © CNES (2023) Distribution Airbus DS  
 SCALE: 1" = 20'

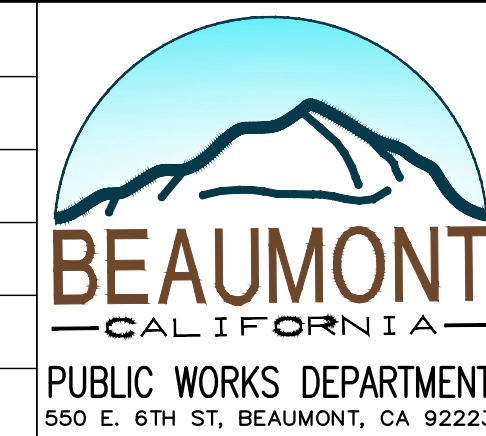


Call 2 Working Days  
 Before You Dig!  
 811

BENCHMARK:  
 THE TOP OF CURB AT THE POINT OF  
 CURVATURE AT THE NORTHEAST  
 CORNER OF THE NORTHEAST CURB  
 RETURN AT THE INTERSECTION OF  
 HIGHLAND SPRINGS AVENUE AND 2ND  
 STREET.  
 ELEV. 2559.03, TBM

BY	MARK	DESCRIPTION	APPR. DATE
ENGINEER		REVISIONS	CITY

DESIGN BY:  
 DC  
 DRAWN BY:  
 DC  
 CHECKED BY:  
 RLV  
 SCALE:  
 1"=20'  
 DATE:  
 2/6/2024  
 JOB NUMBER:



REVIEWED BY: \_\_\_\_\_ DATE: \_\_\_\_\_  
 STAFF ENGINEER  
 RECOMMENDED BY: *Dustin Altman* DATE: 2-7-2024  
 PRINCIPAL ENGINEER  
 APPROVED BY: *Patricia...* DATE: 02/09/2024  
 CITY ENGINEER

CITY OF BEAUMONT, CALIFORNIA  
 IMPROVEMENT PLANS FOR:  
 CITYWIDE SIDEWALK IMPROVEMENTS  
 CIP R-24  
 EUCLID AVENUE 3

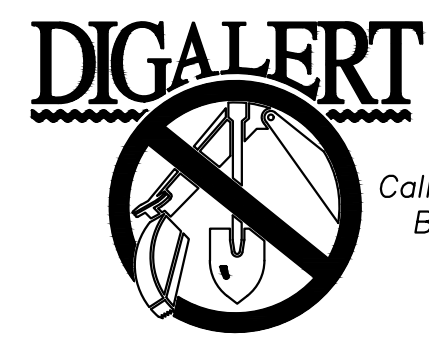
SHEET  
 16  
 OF 26 SHEETS  
 FILE NO:





© 2024 Microsoft Corporation © 2023 Maxar ©CNES (2023) Distribution Airbus DS 20 60

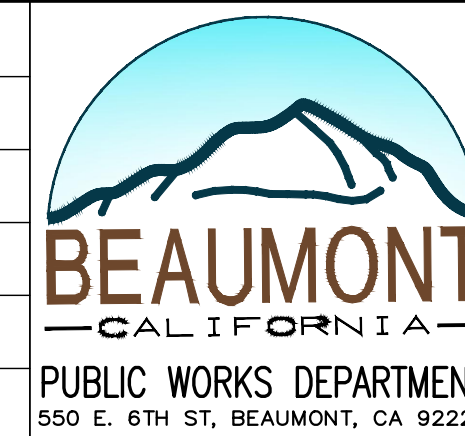
SCALE: 1" = 20'



BENCHMARK:  
THE TOP OF CURB AT THE POINT OF  
CURVATURE AT THE NORTHEAST  
CORNER OF THE NORTHWEST CURB  
RETURN AT THE INTERSECTION OF  
HIGHLAND SPRINGS AVENUE AND 2ND  
STREET.  
ELEV. 2559.03, TBM

BY	MARK	DESCRIPTION	APPR.	DATE
ENGINEER		REVISIONS		CITY

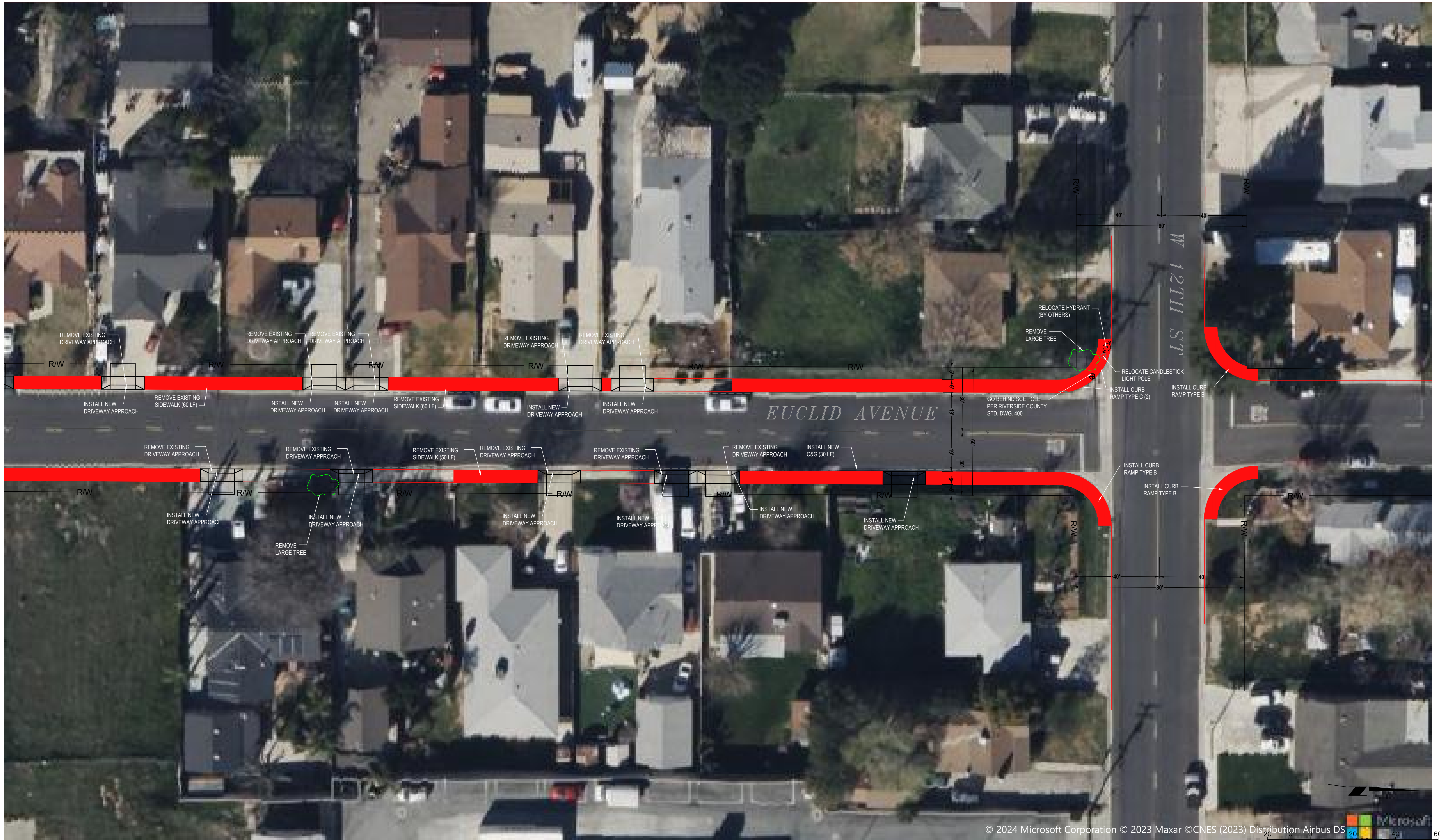
DESIGN BY:  
DC  
DRAWN BY:  
DC  
CHECKED BY:  
RLV  
SCALE:  
1"=20'  
DATE:  
2/6/2024  
JOB NUMBER:



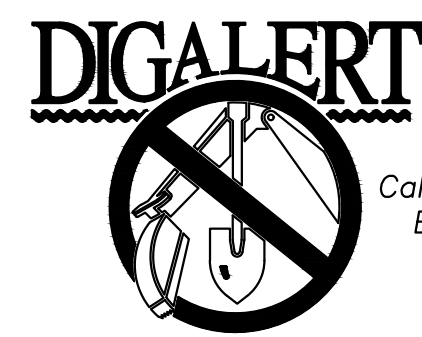
REVIEWED BY: \_\_\_\_\_ DATE: \_\_\_\_\_  
STAFF ENGINEER  
RECOMMENDED BY: *Dustin Othman* DATE: 2-7-2024  
PRINCIPAL ENGINEER  
APPROVED BY: *Patricia...* DATE: 02/09/2024  
CITY ENGINEER

CITY OF BEAUMONT, CALIFORNIA  
IMPROVEMENT PLANS FOR:  
CITYWIDE SIDEWALK IMPROVEMENTS  
CIP R-24  
EUCLID AVENUE 4

SHEET  
17  
OF 26 SHEETS  
FILE NO:



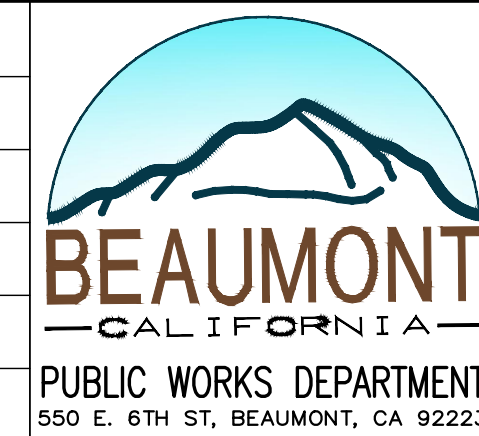
© 2024 Microsoft Corporation © 2023 Maxar © CNES (2023) Distribution Airbus DS  
 SCALE: 1" = 20'



BENCHMARK:  
 THE TOP OF CURB AT THE POINT OF  
 CURVATURE AT THE NORTHEAST  
 CORNER OF THE NORTHWEST  
 RETURN AT THE INTERSECTION OF  
 HIGHLAND SPRINGS AVENUE AND 2ND  
 STREET.  
 ELEV. 2559.03, TBM

BY	MARK	DESCRIPTION	APPR.	DATE
ENGINEER		REVISIONS		CITY

DESIGN BY:  
 DC  
 DRAWN BY:  
 DC  
 CHECKED BY:  
 RLV  
 SCALE:  
 1"=20'  
 DATE:  
 2/6/2024  
 JOB NUMBER:



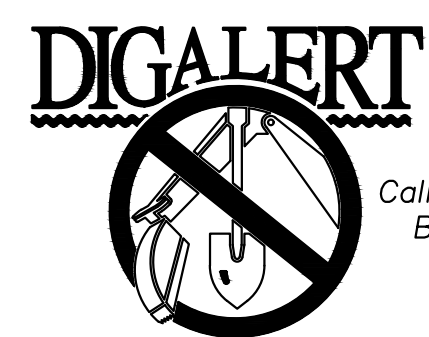
REVIEWED BY: \_\_\_\_\_ DATE: \_\_\_\_\_  
 STAFF ENGINEER  
 RECOMMENDED BY: *Dustin Oltman* DATE: 2-7-2024  
 PRINCIPAL ENGINEER  
 APPROVED BY: *Patricia Williams* DATE: 02/09/2024  
 CITY ENGINEER

CITY OF BEAUMONT, CALIFORNIA  
 IMPROVEMENT PLANS FOR:  
 CITYWIDE SIDEWALK IMPROVEMENTS  
 CIP R-24  
 EUCLID AVENUE 5

SHEET  
 18  
 OF 26 SHEETS  
 FILE NO:



© 2024 Microsoft Corporation © 2023 Maxar ©CNES (2023) Distribution Airbus DS



BENCHMARK:  
THE TOP OF CURB AT THE POINT OF  
CURVATURE AT THE NORTHEAST  
CORNER AT THE INTERSECTION OF  
HIGHLAND SPRINGS AVENUE AND 2ND  
STREET.  
ELEV. 2559.03, TBM

BY	MARK	DESCRIPTION	APPR.	DATE
ENGINEER		REVISIONS		CITY

DESIGN BY: DC  
DRAWN BY: DC  
CHECKED BY: RLV  
SCALE: 1"=20'  
DATE: 2/6/2024  
JOB NUMBER:



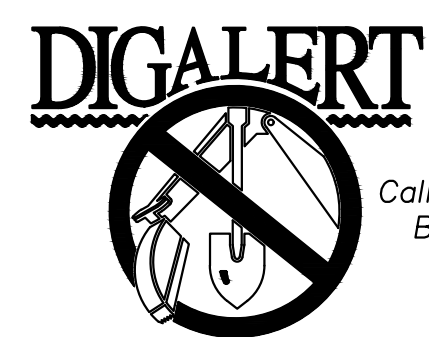
REVIEWED BY: \_\_\_\_\_ DATE: \_\_\_\_\_  
STAFF ENGINEER  
RECOMMENDED BY: *Dustin Altman* DATE: 2-7-2024  
PRINCIPAL ENGINEER  
APPROVED BY: *Patricia...* DATE: 02/09/2024  
CITY ENGINEER

CITY OF BEAUMONT, CALIFORNIA  
IMPROVEMENT PLANS FOR:  
CITYWIDE SIDEWALK IMPROVEMENTS  
CIP R-24  
MAGNOLIA AVENUE 1

SHEET  
19  
OF 26 SHEETS  
FILE NO:



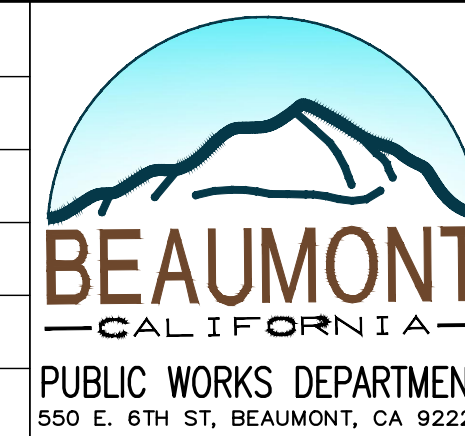
© 2024 Microsoft Corporation © 2023 Maxar ©CNES (2023) Distribution Airbus DS  
 SCALE: 1" = 20'



BENCHMARK:  
 THE TOP OF CURB AT THE POINT OF  
 CURVATURE AT THE NORTHEAST  
 CORNER OF THE NORTHEAST  
 RETURN AT THE INTERSECTION OF  
 HIGHLAND SPRINGS AVENUE AND 2ND  
 STREET.  
 ELEV. 2559.03, TBM

BY	MARK	DESCRIPTION	APPR. DATE
ENGINEER		REVISIONS	CITY

DESIGN BY:  
 DC  
 DRAWN BY:  
 DC  
 CHECKED BY:  
 RLV  
 SCALE:  
 1"=20'  
 DATE:  
 2/6/2024  
 JOB NUMBER:



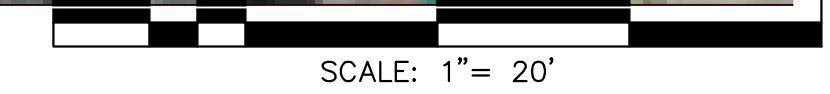
REVIEWED BY: \_\_\_\_\_ DATE: \_\_\_\_\_  
 STAFF ENGINEER  
 RECOMMENDED BY: *Dustin Oltman* DATE: 2-7-2024  
 PRINCIPAL ENGINEER  
 APPROVED BY: *Patricia...* DATE: 02/09/2024  
 CITY ENGINEER

CITY OF BEAUMONT, CALIFORNIA  
 IMPROVEMENT PLANS FOR:  
 CITYWIDE SIDEWALK IMPROVEMENTS  
 CIP R-24  
 MAGNOLIA AVENUE 2

SHEET  
 20  
 OF 26 SHEETS  
 FILE NO:



© 2024 Microsoft Corporation © 2023 Maxar © CNES (2023) Distribution Airbus DS



BENCHMARK:  
THE TOP OF CURB AT THE POINT OF CURVATURE AT THE NORTHEAST CORNER OF THE NORTHWEST CURB RETURN AT THE INTERSECTION OF HIGHLAND SPRINGS AVENUE AND 2ND STREET.  
ELEV. 2559.03, TBM

BY	MARK	DESCRIPTION	APPR.	DATE
ENGINEER		REVISIONS		CITY

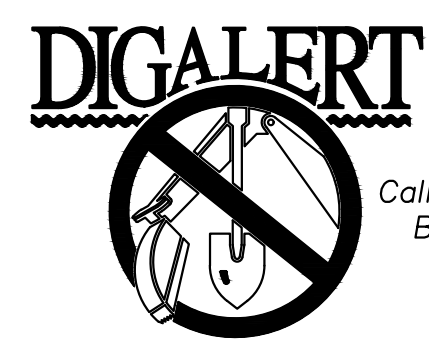
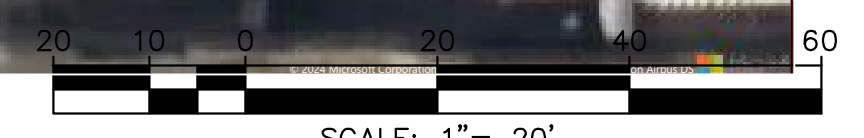
DESIGN BY: DC  
DRAWN BY: DC  
CHECKED BY: RLV  
SCALE: 1"=20'  
DATE: 2/6/2024  
JOB NUMBER:



REVIEWED BY: \_\_\_\_\_ DATE: \_\_\_\_\_  
STAFF ENGINEER  
RECOMMENDED BY: *Dustin Altman* DATE: 2-7-2024  
PRINCIPAL ENGINEER  
APPROVED BY: *Patricia...* DATE: 02/09/2024  
CITY ENGINEER

CITY OF BEAUMONT, CALIFORNIA  
IMPROVEMENT PLANS FOR:  
CITYWIDE SIDEWALK IMPROVEMENTS  
CIP R-24  
MAGNOLIA AVENUE 3

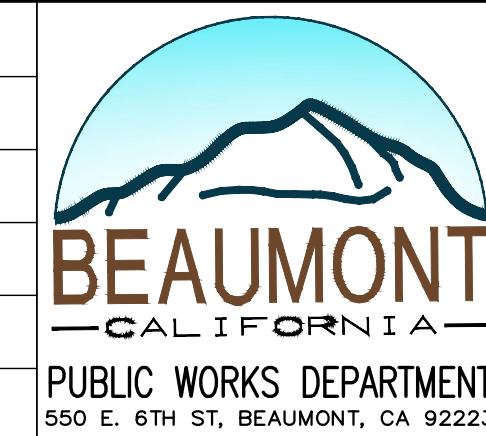
SHEET  
21  
OF 26 SHEETS  
FILE NO:



BENCHMARK:  
 THE TOP OF CURB AT THE POINT OF  
 CURVATURE AT THE NORTHEAST  
 CORNER OF THE NORTHWEST CURB  
 RETURN AT THE INTERSECTION OF  
 HIGHLAND SPRINGS AVENUE AND 2ND  
 STREET.  
 ELEV. 2559.03, TBM

BY	MARK	DESCRIPTION	APPR.	DATE
ENGINEER		REVISIONS		CITY

DESIGN BY:  
DC  
 DRAWN BY:  
DC  
 CHECKED BY:  
RLV  
 SCALE:  
1"=20'  
 DATE:  
2/6/2024  
 JOB NUMBER:



REVIEWED BY: \_\_\_\_\_ DATE: \_\_\_\_\_  
 STAFF ENGINEER  
 RECOMMENDED BY: *Dustin Ottens* DATE: 2-7-2024  
 PRINCIPAL ENGINEER  
 APPROVED BY: *[Signature]* DATE: 02/09/2024  
 CITY ENGINEER

CITY OF BEAUMONT, CALIFORNIA  
 IMPROVEMENT PLANS FOR:  
 CITYWIDE SIDEWALK IMPROVEMENTS  
 CIP R-24  
 CHESTNUT AVENUE 1

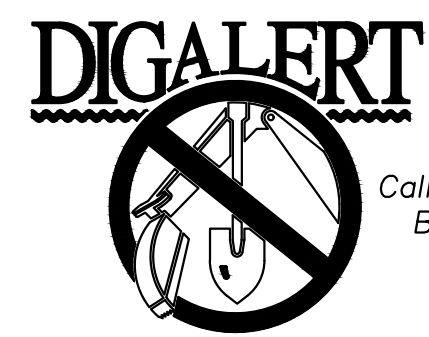
SHEET  
 22  
 OF 26 SHEETS  
 FILE NO:





© 2024 Microsoft Corporation © 2023 Maxar © CNES (2023) Distribution Airbus DS

SCALE: 1" = 20'



BENCHMARK:  
THE TOP OF CURB AT THE POINT OF CURVATURE AT THE NORTHEAST CORNER OF THE NORTHWEST CURB RETURN AT THE INTERSECTION OF HIGHLAND SPRINGS AVENUE AND 2ND STREET.  
ELEV. 2559.03, TBM

BY	MARK	DESCRIPTION	APPR.	DATE
ENGINEER		REVISIONS		CITY

DESIGN BY: DC  
DRAWN BY: DC  
CHECKED BY: RLV  
SCALE: 1"=20'  
DATE: 2/6/2024  
JOB NUMBER:



REVIEWED BY: \_\_\_\_\_ DATE: \_\_\_\_\_  
STAFF ENGINEER  
RECOMMENDED BY: *Dustin Ott* DATE: 2-7-2024  
PRINCIPAL ENGINEER  
APPROVED BY: *Patricia* DATE: 02/09/2024  
CITY ENGINEER

CITY OF BEAUMONT, CALIFORNIA  
IMPROVEMENT PLANS FOR:  
CITYWIDE SIDEWALK IMPROVEMENTS  
CIP R-24  
MASSACHUSETTS AVENUE 1

SHEET  
24  
OF 26 SHEETS  
FILE NO:

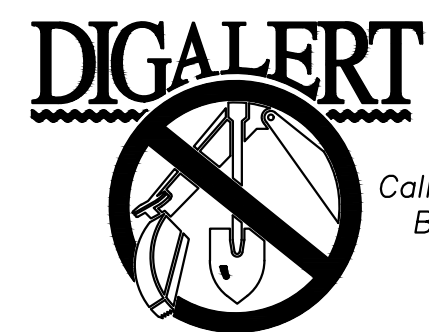






© 2024 Microsoft Corporation © 2023 Maxar ©CNES (2023) Distribution Airbus DS

SCALE: 1" = 20'



BENCHMARK:  
THE TOP OF CURB AT THE POINT OF CURVATURE AT THE NORTHEAST CORNER OF THE NORTHWEST CURB RETURN AT THE INTERSECTION OF HIGHLAND SPRINGS AVENUE AND 2ND STREET.  
ELEV. 2559.03, TBM

BY	MARK	DESCRIPTION	APPR. DATE
ENGINEER		REVISIONS	CITY

DESIGN BY: DC  
DRAWN BY: DC  
CHECKED BY: RLV  
SCALE: 1"=20'  
DATE: 2/6/2024  
JOB NUMBER:



REVIEWED BY: \_\_\_\_\_ DATE: \_\_\_\_\_  
STAFF ENGINEER  
RECOMMENDED BY: *Dustin Ott* DATE: 2-7-2024  
PRINCIPAL ENGINEER  
APPROVED BY: *P. Williams* DATE: 02/09/2024  
CITY ENGINEER

CITY OF BEAUMONT, CALIFORNIA  
IMPROVEMENT PLANS FOR:  
CITYWIDE SIDEWALK IMPROVEMENTS  
CIP R-24  
MASSACHUSETTS AVENUE 3

SHEET  
26  
OF 26 SHEETS  
FILE NO: