



Beaumont Truck Routing Study Update

Presented By: Jolene Hayes

Beaumont City Council – August 20, 2024

Beaumont Truck Routing Study Update

AGENDA



Goals & Intent of Truck Routes



Land Use & Truck Patterns



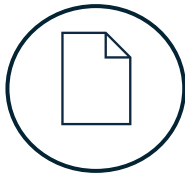
Recommended Truck Routes



Design Deficiencies / Recommendations



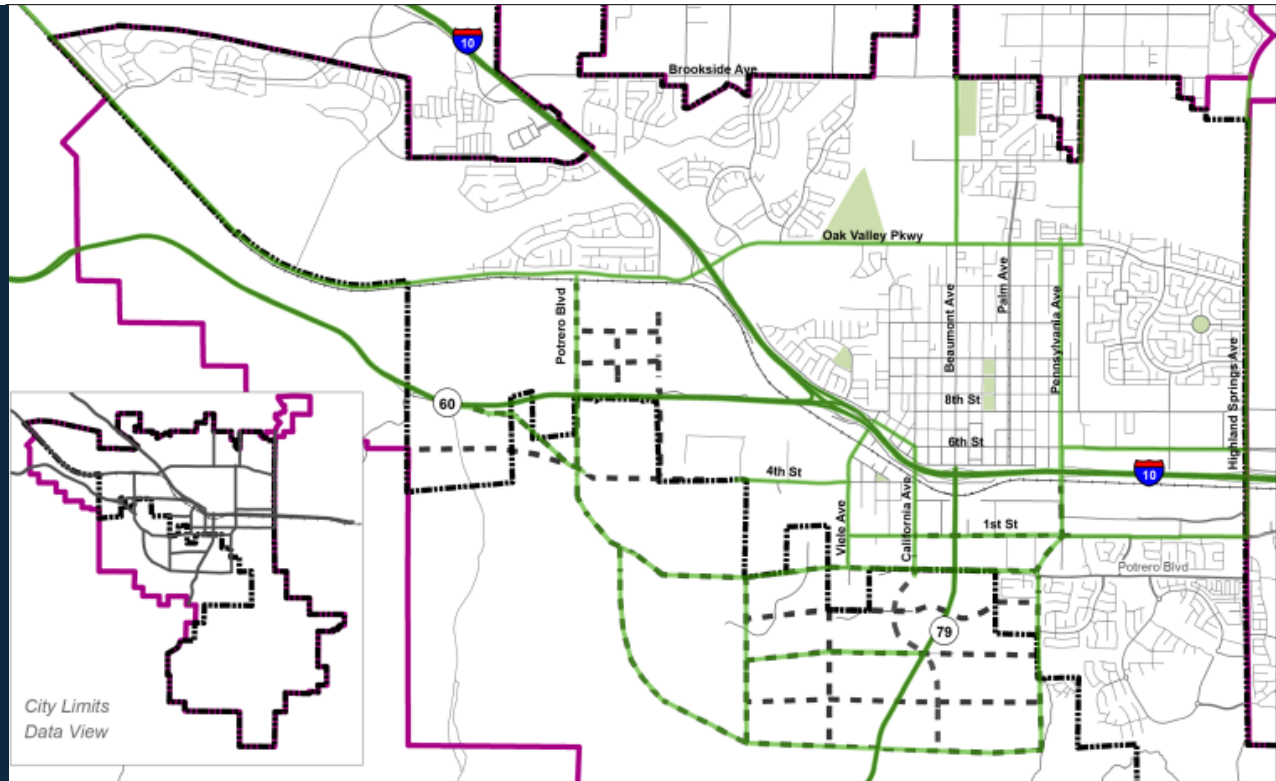
Funding Strategies



Truck Routes: Goals & Intent

- **Facilitate the safe movement of trucks**
- **Reduce truck traffic north of I-10 and SR 60**
- **Minimize community impacts**
- **Provide access to truck-served businesses**
- **Design truck routes to accommodate trucks**
- **Reduce maintenance costs**
- **Provide safe separation of truck and non-motorized traffic (bikes/peds)**

General Plan: Proposed Truck Priority Network

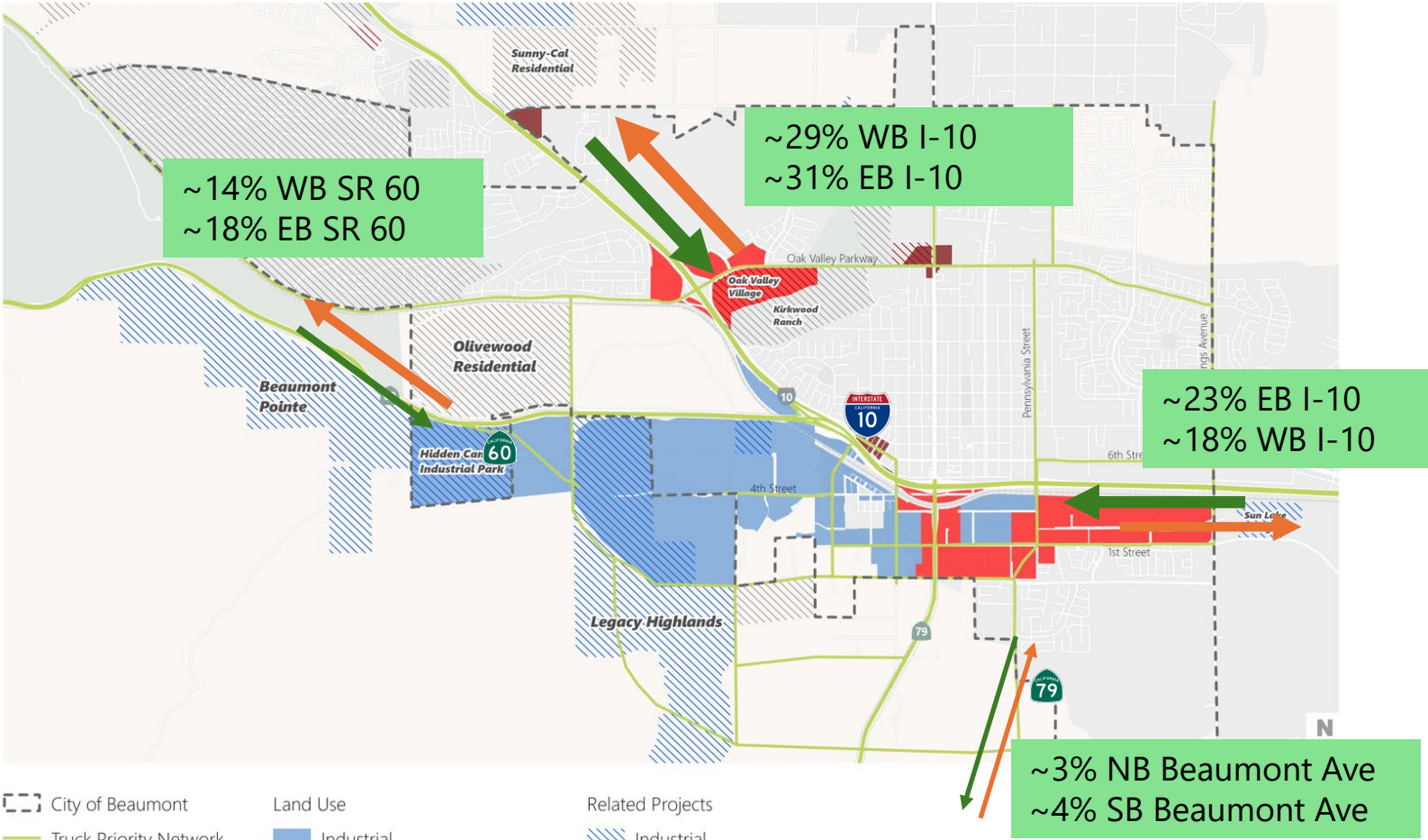


- City Boundary
- Sphere of Influence
- Truck Priority
- Potential Roadways





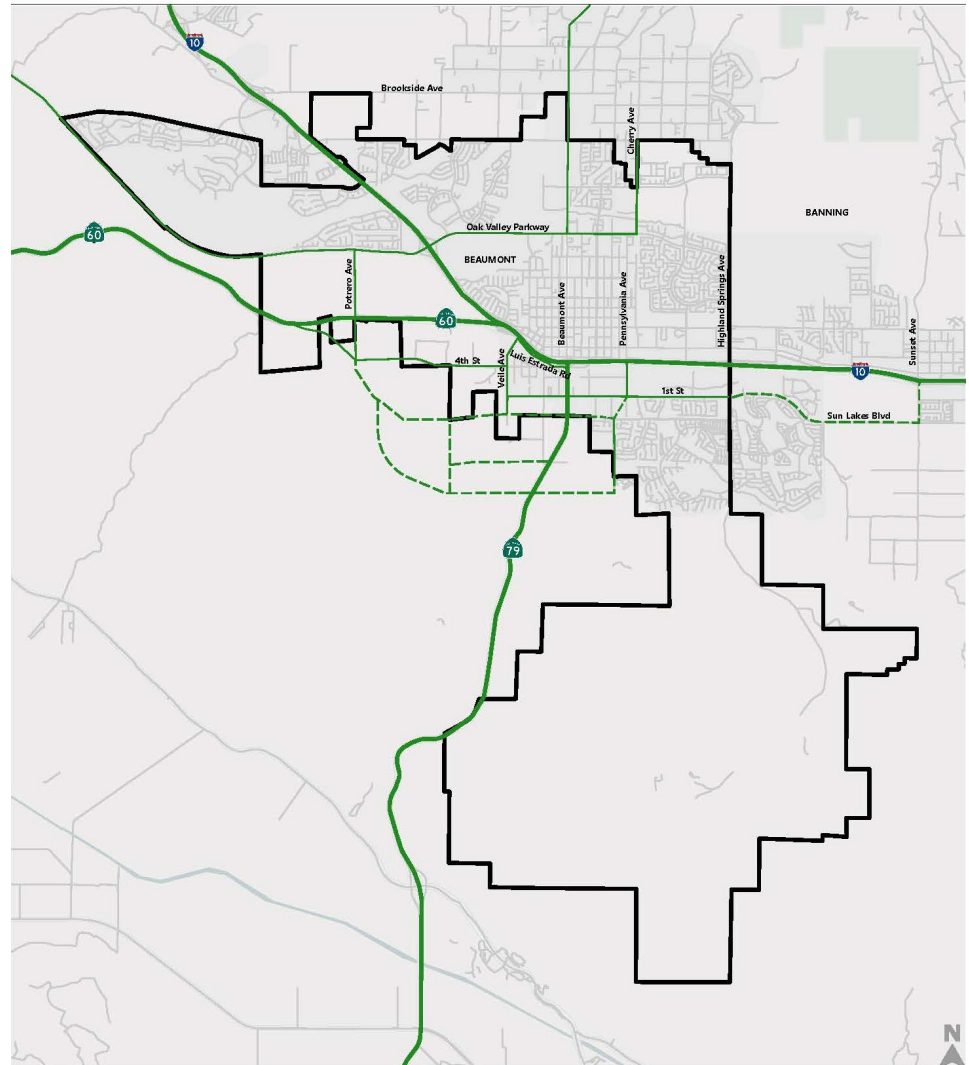
Land Use & Truck Patterns



Proposed Truck Routes



- **4th Street:** SR 60 – Viele Avenue
- **Viele Avenue:** SR 60 – 1st Avenue
- **1st Avenue:** Viele Avenue – Highland Springs Avenue
- **Beaumont Avenue:** SR 60 to southern city limit
- **Potrero Boulevard:** Oak Valley Parkway – 4th Street
- **Oak Valley Parkway:** Beaumont Avenue – western city limit
- **Beaumont Avenue:** S/O SR 60 and N/O Oak Valley Parkway





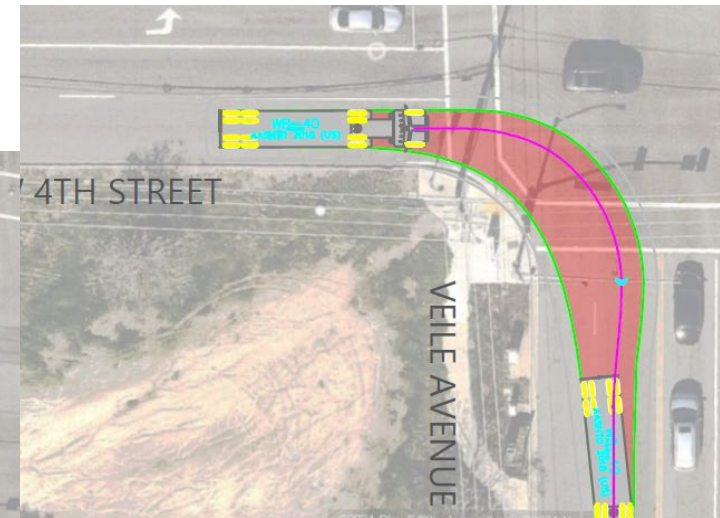
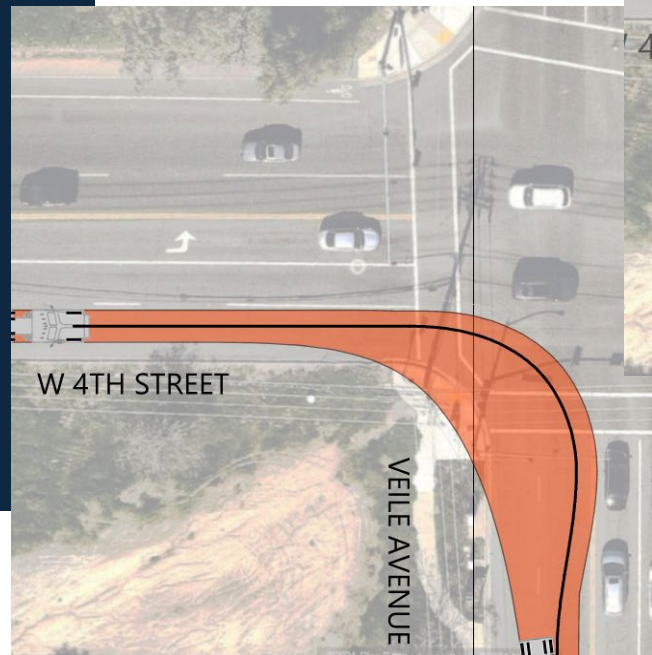
Design Deficiencies: 4th Street/ Viele Avenue

Key Concerns:

- Intersection can only accommodate 40-WB trucks
- Larger trucks (WB-67) cannot make the EB right-turn
- EB right-turn requires truck to either overtake the NB left-turn lane or to run over the corner

Proposed Improvement:

- Modify turning radius by relocating utilities and traffic signal pole
- Modify roadway striping





Design Deficiencies:

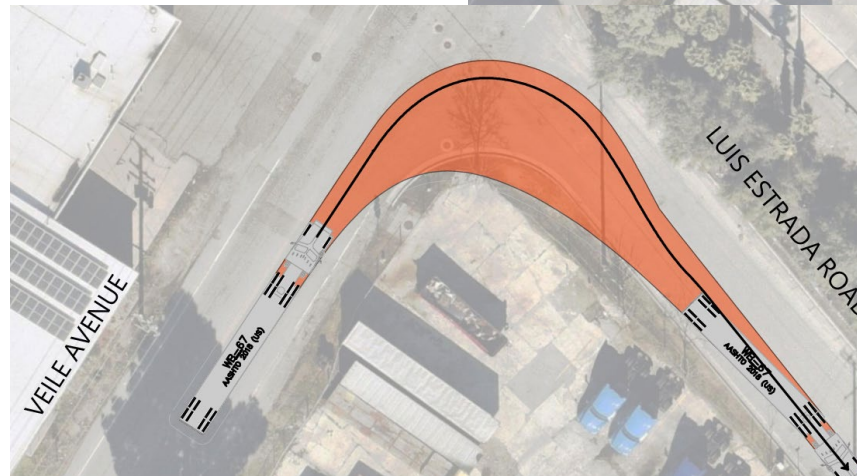
Luis Estrada Road / Viele Avenue

Key Concerns:

- Intersection can only accommodate 40-WB trucks
- Larger trucks (WB-67) cannot make the NB right-turn
- NB right-turn requires truck to either overtake the WB through lane or to run over the corner

Proposed Improvement:

- Close NB Viele Avenue north of Luis Estrada and redesign intersection, OR
- Acquire ROW and redesign SEC to accommodate trucks





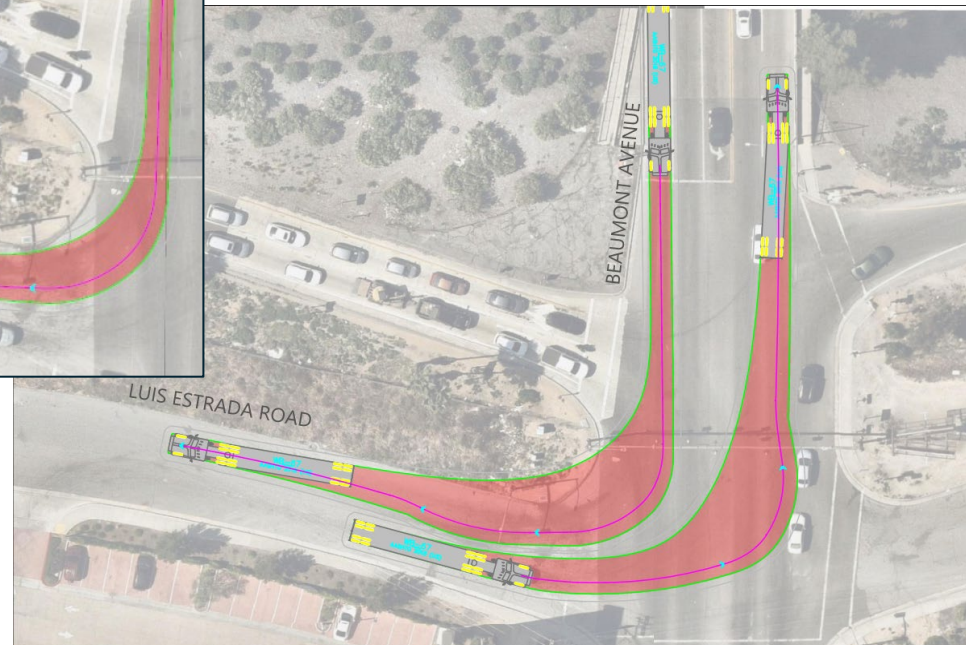
Design Deficiencies: Luis Estrada Road / Beaumont Avenue

Key Concerns:

- Intersection can only accommodate 40-WB trucks
- Larger trucks (WB-67) cannot make the NB right-turn
- SB right-turn onto Luis Estrada requires truck to either overtake the EB through lane or to run over the corner

Proposed Improvement:

- Modify curb on the NWC





Design Deficiencies:

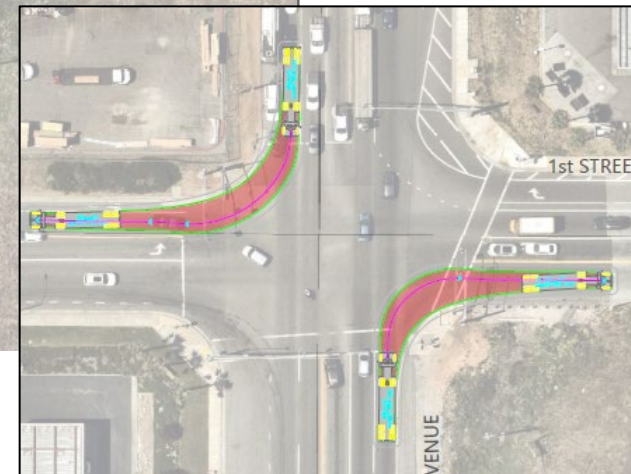
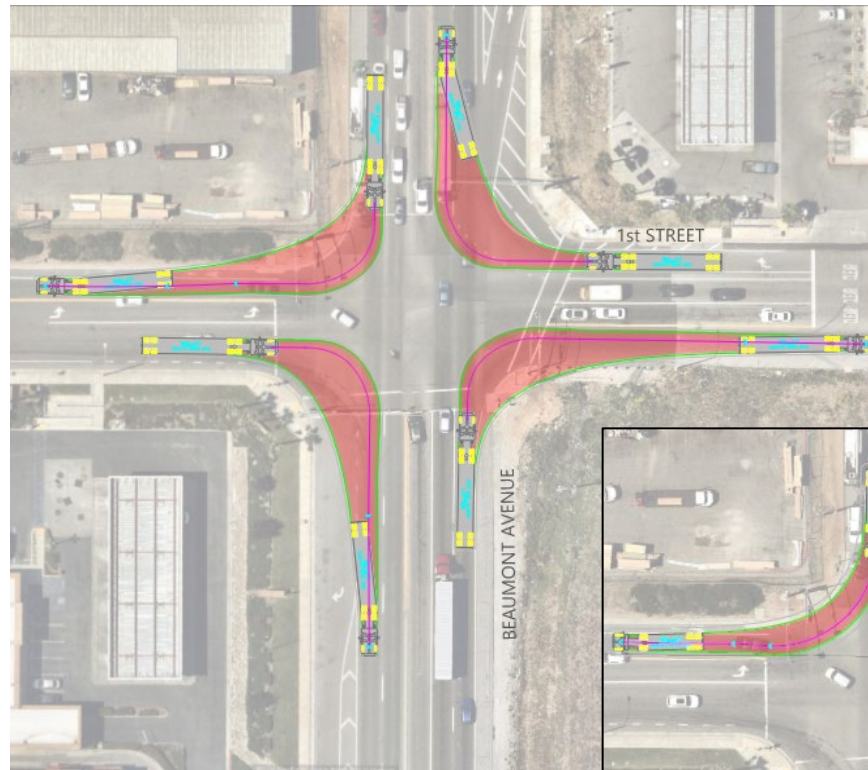
1st Street / Beaumont Avenue

Key Concerns:

- Intersection can only accommodate 40-WB trucks
- Larger trucks (WB-67) cannot make the NB right-turn
- SB/NB right-turns onto 1st Street require trucks to either overtake the EB/WB through lanes or to run over the NW/SE corners

Proposed Improvement:

- Modify curbs on the NWC and SEC and relocate signal equipment at both locations; may require ROW





Design Deficiencies:

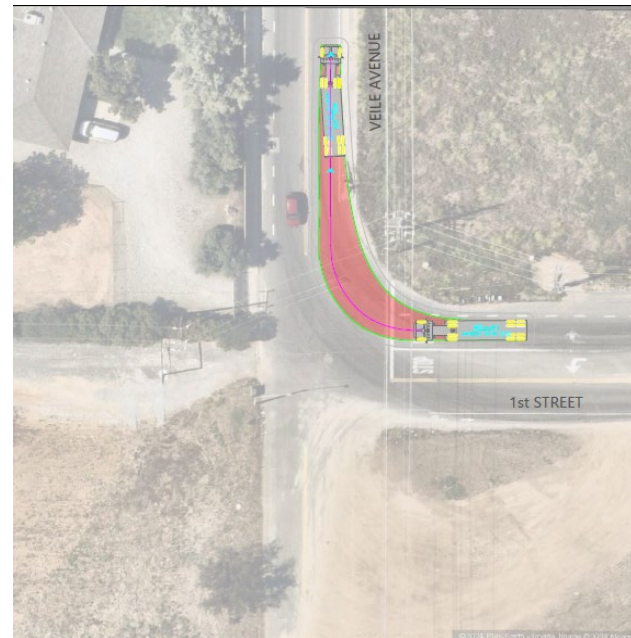
1st Street / Viele Avenue

Key Concerns:

- Intersection can only accommodate 40-WB trucks
- Larger trucks (WB-67) cannot make the WB right- or left-turns
- WB right-turn requires truck to overtake the NE corner
- WB left-turn requires truck to overtake unimproved shoulder at the SE corner

Proposed Improvement:

- Modify NEC curb and extend and improve the SWC; may require ROW





Design Deficiencies:

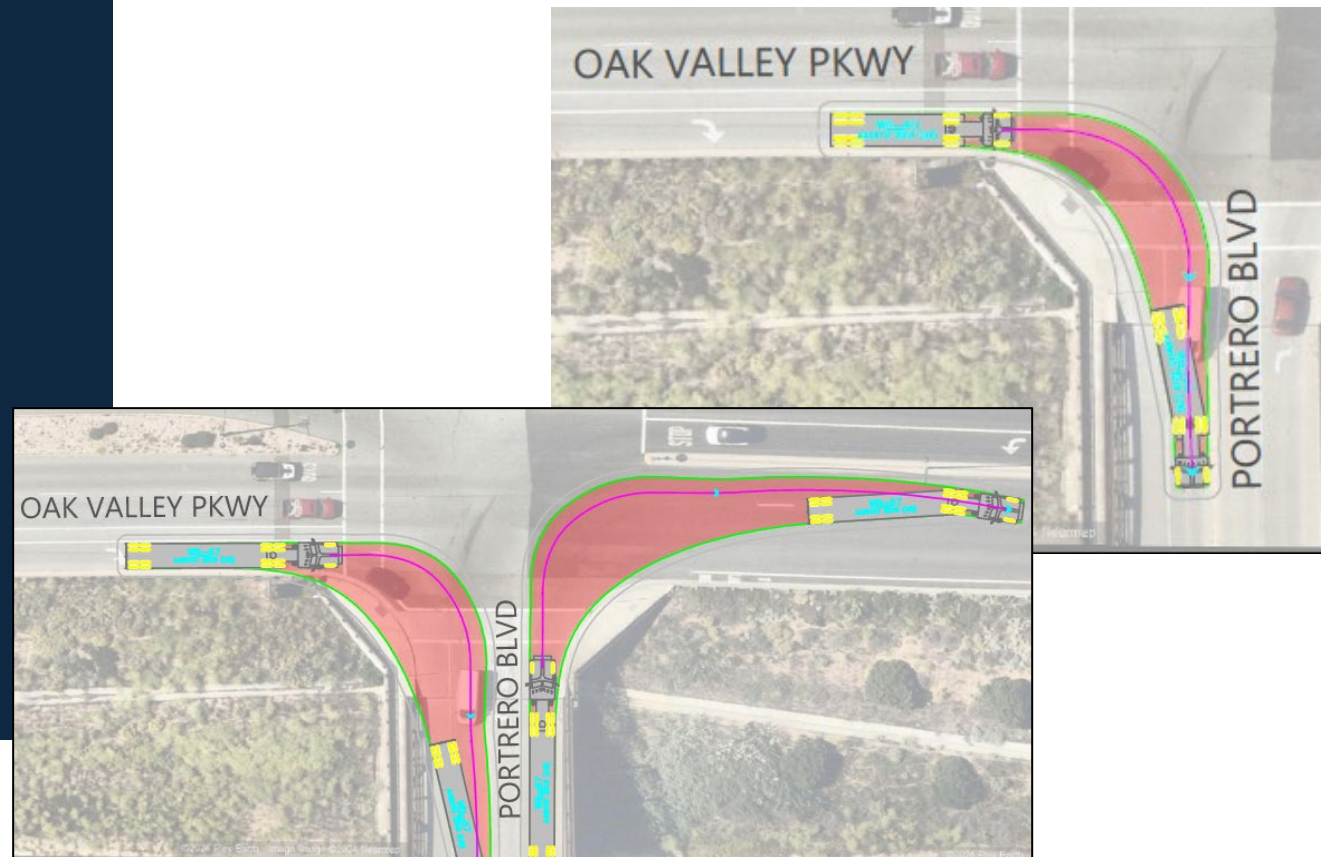
Oak Valley Parkway/ Potrero Boulevard

Key Concerns:

- Intersection can only accommodate 40-WB trucks
- Larger trucks (WB-67) cannot make the EB right-turn
- EB right-turns onto SB Potrero Blvd overtake the SWC or the NB left-turn lane

Proposed Improvement:

- Modify SWC curb and the Potrero Bridge; may require ROW



Funding Truck Route Improvements

FILL
WITH
PICTURE
OR COLOR



Development Impact Fees

- ✓ Require improvements based on a proposed project's utilization of specific truck routes



Establish EFID or IRFD

- ✓ EFID tax increment to fund improvements & roadway O&M in the industrial area
- ✓ IRFD to issue infrastructure improvement bonds to be repaid with tax increment or special assessments



Local Sources

- ✓ Streets & Bridges Impact Fee
- ✓ Traffic Signal Impact Fee
- ✓ TUMF
- ✓ Measure A
- ✓ STBG
- ✓ SB 1 Local Return

