

# CHAMBERS GROUP

PROFESSIONAL  
ENVIRONMENTAL  
CONSULTING SERVICES  
FOR CHERRY CHANNEL  
DRAINAGE PROJECT

CITY OF BEAUMONT

MARCH 28, 2024



**Cover Letter**

March 28, 2024

City of Beaumont  
Vincent Lopez, Project Manager – Capital Projects  
550 E. Sixth Street  
Beaumont, CA 92223

Dear Vincent Lopez:

As a comprehensive environmental company with almost 45 years of experience, Chambers Group offers the City of Beaumont (City) a full complement of in-house planning and technical services. Our dedicated staff members have successfully worked with the City over the years on many projects.

Our firm has an extensive and successful resume of providing similar California Environmental Quality Act (CEQA) and National Environmental Policy Act (NEPA) services for complex projects throughout southern California, including a Tri-Pointe project that is just a few blocks to the east of the Proposed Project. The Tri-Pointe Atwell Development Project has been complicated but very successful. We are working on a Determination of Biologically Equivalent or Superior Preservation (DBESP) for the Project. The California Department of Fish and Wildlife (CDFW) has been very vocal on the Project, and with many projects within the state. With this knowledge, Chambers Group will impart our knowledge on this Project saving the City time and money. The firm maintains an understanding of evolving environmental legislation and meeting the stringent requirements of federal, state, and local regulatory agencies.

**Why Chambers Group?**

- **Experience with:** Environmental planning documents for channel drainage projects.
- **Community/Project Understanding:** Chambers Group has successfully provided services and completed many projects in the City.
- **We understand all subconsultants must be approved by the City.** For this project, we have suggested the following subconsultants. **LDN Associates (LDN)** adds Air Quality, Greenhouse Gas (GHG) and Noise Expertise. **Ninyo & Moore** adds Geotechnical and Environmental Assessment Expertise. Jeff Aguilar, PG and Michael Putt, PG and their team will provide expertise in geology and Environmental Site Assessment (ESA) for the Project.

Our proposed Project Manager and primary point of contact for this proposal is Eunice Bagwan (Project Manager). She can be contacted by email at [ebagwan@chambersgroupinc.com](mailto:ebagwan@chambersgroupinc.com) and by phone at 949-261-5414. I, Mike McEntee, President, will serve as Principal in Charge and am authorized to commit the resources of the firm. I can be reached at 949-261-5414, 3151 Airport Avenue, Suite F208, Costa Mesa, CA 92626. If the City requires additional information or would like to discuss qualifications further, please do not hesitate to contact Eunice Bagwan or me directly on the phone number or e-mail addresses listed. Chambers Group formally acknowledges Addenda 1 and 2 and we have the required insurance in place.

Sincerely,

**CHAMBERS GROUP, INC.**



Mike McEntee, President

[mmcentee@chambersgroupinc.com](mailto:mmcentee@chambersgroupinc.com)



## B. Introduction/Information

**Statement of Understanding.** Public agencies and businesses have been relying on Chambers Group to support them in meeting and maintaining compliance with applicable federal, state, and/or local environmental laws, regulations, and guidelines since the late 1970s. Chambers Group is a California S-Corporation and owned by Chambers Group Inc. Employee Stock Ownership Trust incorporated May 25, 1979. The majority of our work is from repeat clients who trust us to deliver scientific objectivity, environmental expertise, and defensible technical documentation to comply with multiple regulatory agencies' requirements. Chambers Group provides comprehensive in-house biological, habitat restoration and environmental services along with technical staff capable of meeting the City's project needs. With project execution based on personal and collective responsibility, our dedicated professionals have successfully prepared thousands of environmental and planning reports and studies, agency consultations, in compliance with CEQA, NEPA, and the Endangered Species Act. We have consulted with the United States Fish and Wildlife Service (USFWS) and CDFW and have provided surveys and permit applications for the United States Army Corps of Engineers (USACE), Regional Water Quality Control Board (RWQCB), and CDFW.

## C. Approach

**Work Methodology.** The Chambers Group Project Manager will optimize communication between the team. The Project Manager will provide clear and effective communication with regular updates from project staff, tracking internal tasks against the project's budget and schedule and by holding monthly internal briefings to assess the project's progress.

**Meeting Schedules.** Chambers Group uses Microsoft (MS) Project to develop its work schedules. The exact schedule of any task will be based upon the individual project. As the project progresses, the schedule would be updated and revised as needed, to respond to changing conditions, and only at the City's direction. In response to conditional changes, Chambers Group will work with the City to determine the cause of any delay and take corrective actions to readjust the schedule. Schedule changes due to circumstances beyond participants' control will be immediately brought to the attention of the City and readjusted with the City's approval.

**Ability to work with tight deadlines/Potential Agency Delays:** Approval times vary with every project and are influenced by numerous factors. Chambers Group also has ongoing relationships with many of the regulatory agencies that oversee permitting and CEQA compliance for specific technical areas. Since members of our project team have existing relationships with agency staff, they are able to perform agency consultations in order to avoid delays in the project schedule. For example, for biological resources, we provide biological monitors and restoration specialists who are implementing the plans with the ability to make changes in the field as part of adaptive management.

**Problem Solving:** Chambers Group has several proven systems in place to prevent project delays due to unforeseen staff changes.

- Our team knows how to mobilize on very short notice.
- Our staff is cross trained to perform multiple tasks, making the transition to new tasks swift and efficient. Our biologists and cultural staff also write reports and CEQA document sections.
- We encourage our staff to establish and maintain agency and client relationships.
- We specifically analyze each project to determine the most appropriate level of CEQA documentation, ensuring that we don't over scope an unnecessary document.



- With a depth of planning staff, we can work within strict timeframes to meet deadlines; we have even successfully had an Mitigated Negative Declaration (MND) certified in under 50 days from Notice to Proceed (NTP).

**Quality Assurance/Quality Control (QA/QC) Plan:** Chambers Group has a well-established QA/QC program ensuring the quality of our work. We evaluate all deliverables based on the scope of work, contract, and client expectations. Quality assurance will document the quality control program, outlining any concerns, issues, and reporting on any corrective steps taken to guarantee a quality deliverable. All deliverables, including daily monitoring forms, will undergo QA/QC by key staff members.

**Our QA/QC process is consistent and effective in its procedures:**

- The technical staff member provides a copy of the draft document, and scope of work to a technical reviewer.
- After the review, modifications are made, and the report is submitted to the Chambers Group Project Manager.
- The Project Manager compares the document to the task objectives. If the document does not meet the technical objectives, the technical staff member makes necessary changes to correct the document and the Project Manager accepts the track changes as appropriate.
- After completing the QC process, the document is prepared for delivery to the City's team.

A copy of all deliverables produced for a project will be retained in database form by Chambers Group for archival purposes. The archival package will include identical digital copies of the reports and all other materials produced by the project including correspondence, the contract itself, all digital data and photo logs, etc.

**Budget Control:** Using data and reports from Deltek-Vision allows the Project Manager and team to access real-time information. This information allows them to track project costs as well as communicate budget progress with Client during conference calls, meetings and/or site visits.

Expenses are entered into Deltek-Vision daily (labor hours on a weekly basis) so that the Project Manager can access up-to-date data when producing project reports. Costs and/or staff hours can be compared to budgeted costs/hours on a project, task, or activity basis. Project Finance enters project costs to time, expense, and other direct costs including subcontractors' invoices into Vision by project and by task.

**D. Firm Profile**

Chambers Group is a California Corporation, and a comprehensive environmental planning company with almost 45 years of experience. Our headquarters is located at 3151 Airport Avenue, Suite F208, Costa Mesa, CA 92626, (949) 261-5414, (866) 261-3100 (fax), [www.chambersgroupinc.com](http://www.chambersgroupinc.com).

**E. Location**

The Project office for this contract will be Chambers Group, Inc.'s Corporate Headquarters, listed above and we will also utilize resources from our San Diego office located at 9620 Chesapeake Drive, Suite 202, San Diego, CA 92123, (858) 541-2800, (866) 261-3100 (fax).

**F. Resume of Lead Consultant**

The project descriptions provided below describe our past record of performance and relevant project experience providing CEQA/NEPA documentation, supporting technical studies, and coordination with regulatory agencies, water districts, and municipalities in Southern California.



### [Atwell Development Project Phases 3-8, Tri Pointe Homes, Banning, Riverside County, CA](#)

The Atwell Development Project area covers 1,523 acres owned by Tri-Pointe Homes. The Project proposes the development of eight phases over an estimated 30-year implementation period. The Project's phased construction approach will include residential homes, parks, open space, and commercial use areas. Chambers Group's services include CEQA compliance, implementing the projects Mitigation Monitoring and Reporting Plan (MMRP), preparation of a DBESP planning and coordinating field visits and biological surveys with the client, scheduling field staff, and overseeing the production and timely delivery of reports.

### [Woodcrest-Rinehart Acres Drainage Project, Riverside County Flood Control District](#)

The Woodcrest-Rinehart Acres Drainage Project consists of placing a series of 100-year storm drain facilities ranging in diameter from 24-60 inches (in.), placement of a water quality/extended detention basin, and street improvements.

### [North Norco Channel Line NB, Riverside County Flood Control District, Riverside County, CA](#)

The District proposed to replace approximately 1,800 lineal feet of existing earthen channel with an open concrete trapezoidal and rectangular channel with base width and height ranging from 6' - 11' and 5' - 7', respectively. The primary objective is to provide 100-year flood protection to the community near the channel between Valley View Avenue and Sierra Avenue by collecting 100-year flows from the existing improved portion of Line NB upstream of Valley View Avenue and conveying them westerly in an upgraded channel until they are discharged into the existing North Norco Channel just east interstate 15.

### [Superior Avenue Pedestrian and Bicycle Bridge CEQA/NEPA, City of Newport Beach, Newport Beach, CA](#)

The City of Newport Beach proposed the construction of a pedestrian and bicycle bridge overcrossing Superior Avenue, a new larger parking lot with a range of 100 to 128 parking spaces and a small passive recreational area on an approximately 3.4-acre site in the City of Newport Beach. One of the goals of the Project was to improve pedestrian and bicycle safety and access to Sunset Ridge Park.

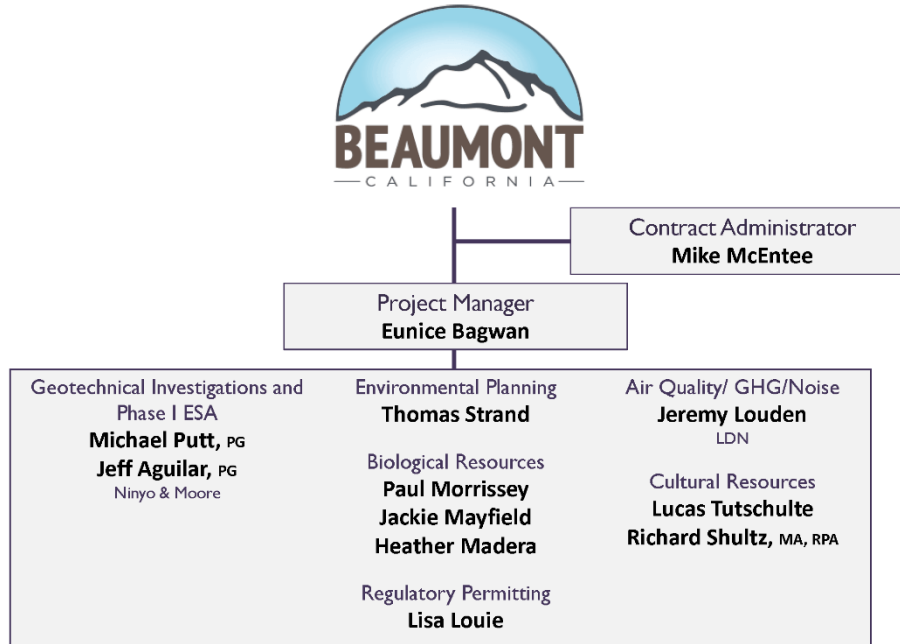
### [City of Beaumont On-Call for Environmental Consulting Services, Beaumont, CA, City of Beaumont](#)

Commencing in July 2016, Chambers Group has completed a series of task orders to support the City with general CEQA compliance as well as conduct peer review of project applications and CEQA documents. Chambers Group has provided guidance and assistance with the preparation of all required environmental impact documentation (including CEQA documents, Consistency Evaluations, Environmental Check Lists, etc.); preparation and/or peer review of technical environmental reports and analyses (GHG studies, traffic studies, noise studies, surveys, water supply assessments, etc.); participation and testimony in public meetings; consultation on CEQA processes and requirements.



### G. Key Personnel

The regulatory environment in California is ever evolving and our in-house staff of environmental planners and technical experts are equipped with the most up to date regulatory guidance.



Staff and project functionality will not be compromised. We have several proven systems in place to prevent project delays due to unforeseen staff changes. Our staffing plan for each project will identify staff members qualified to serve as back-up for key personnel, if ever needed. These staff members will already be part of the team and have current knowledge of the project.

*Our staff is cross trained to perform multiple tasks, making the transition to new tasks swift and efficient.*

Our technical specialists and planning staff write technical reports and CEQA/NEPA documents. We make sure we have enough field and support staff for scheduling multiple projects and rapid mobility. Permits are consistently managed and updated.

*We are constantly training to keep permitted biologists current and maintain their ability to jump in when needed.*

#### Chambers Group Key Team Members

Name	Position/Role	Education	Licenses/ Certifications	Years of Exp.
Eunice Bagwan	Project Manager	MS, Environmental Management and Planning, Johns Hopkins University, Baltimore, MD, BS, Environmental and Occupational Health and Safety, CA State University, Northridge		8
Mike McEntee	Contact Administrator/ President	BA, Biology, California State University, Fullerton	USFWS Permit #TE099463-0	20+



Name	Position/Role	Education	Licenses/ Certifications	Years of Exp.
Thomas Strand	Environmental Planner	MS, Watershed Science, San Diego State University, BA, Geography, San Diego State University		10
Paul Morrissey	Biological Resources Lead	MS, Biology, California State University, Dominguez Hills, BS, Biology, California State University	USFWS, #TE182550-1, CDFW Scientific Collector's Permit, #SC-008151	17
Jackie Mayfield	Biological Resources	BS, Environmental Biology, California State University, Northridge AS, Biological and Physical Science, College of the Canyons		11
Heather Madera	Biologist	MS, Biology, California State University, Fullerton, BS, Wildlife Biology Colorado State University, Fort Collins, CO	USWFS Recovery Permit, Coastal California Gnatcatcher, California Rapid Assessment Method (CRAM) Training	14
Lisa Louie	Regulatory Permitting	MS, Marine Science, University of San Diego, BS, General Biology, University of California, San Diego	CRAM – Southern California Research Project	23
Lucas Tutschulte	Cultural Resources Lead	BS, Anthropology emphasis in Archaeology; University of Kansas, Minor - Geography emphasis in Cultural Geography Huaca de la Luna y Sol Project, Field School Program; Pontificia Universidad Catolica, Trujillo, Peru	GPS Hardware: Highly fluent with Trimble HT/XT, and Yuma models using TerraSync, ArcPad, and ESRI software.	16
Richard Shultz, MA, RPA	Principal Investigator	MA, Cultural Resources Management, Sonoma State University, BA, Anthropology, San Diego State University	Registered Professional Archaeologist (RPA), #15841	30+
Jeremy Loudon	Air Quality, GHG, & Noise Analysis/LDN	BS Civil Engineering, San Diego State University, AA, General Education, Palomar Community College	Engineer-In-Training (EIT) #114983	20+
Michael Putt, PG	Principal Geologist/Ninyo & Moore	BS, Geology, California State University, Fullerton, Applied Rock Slope Engineering Short Course, Association of Engineering Geologists, California	PG 7581 (California) CEG 2341 (California) Radiological Safety and Gauge Use Certification, 1997	20+
Jeff Aguilar, PG	Principal Geologist/Ninyo & Moore	BA, Geology, University of Nebraska, Lincoln	PG 8178 (California) OSHA 40-hour HAZWOPER with 8-hour refreshers, OSHA 8-hour HAZWOPER Site Supervisor Training	20+

**Full team resumes are included in the Appendix.**



## H. References

### Atwell Development Project Phases 3-8, Banning, Riverside County, CA

Client: Tri-Pointe Homes, Michael Heishman, Director of Land Development, (951) 496-6148, Michael.Heishman@TriPointeHomes.com, Length of time of Services: 02/2021-Current

The Atwell Development Project area covers 1,523 acres owned by Tri Pointe Homes. The project proposes the development of eight phases over an estimated 30-year implementation period. The project's phased construction approach will include residential homes, parks, open space, and commercial use areas. Chambers Group's services include CEQA compliance, implementing the projects MMRP, preparation of a DBESP planning and coordinating field visits and biological surveys with the client, scheduling field staff, and overseeing the production and timely delivery of reports. In addition, we prepared a Burrowing Owl Mitigation and Monitoring Plan for the project in accordance with the Streambed Alteration Agreement as burrowing owls are known to occur on-site, and the plan was approved after successful coordination with CDFW and Western Riverside County Regional Conservation Authority. The team successfully coordinated with Tri Pointe Homes to modify the construction schedule for project activities planned to occur adjacent to burrowing owl avoidance buffers to protect the species.

### Woodcrest-Rinehart Acres Drainage Project, Riverside County, CA

Client: Riverside County Flood Control District, Gene Jennings, Associate Flood Control Planner, (951) 955-8377, ecjennin@rcflood.org, Length of time of Services: 02/2020 – 04/2021

The Woodcrest-Rinehart Acres Drainage Project consists of placing a series of 100-year storm drain facilities ranging in diameter from 24-60 inches (in.), placement of a water quality/extended detention basin, and street improvements. The street improvements consist of the paving of Granite Avenue and Boulder Avenue from their intersection with Taft Street to the west to their intersection with Wood Road to the east. Additionally, Dallas Avenue will be paved from its intersection with Taft Street to the west and continuing east until the entry point of the Woodcrest-Rinehart Acres Basin about 650 Linear Feet east of Wood Road. The street improvements for these paved roads also include 4-6-in. AC berm.

### North Norco Channel Line NB, Riverside County, CA

Client: Riverside County Flood Control District, Kevin Cunningham, (951) 955-1526, kcunningham@rcflood.org, Length of time of Services: 10/2022 - Current

The District proposed to replace approximately 1,800 lineal feet of existing earthen channel with an open concrete trapezoidal and rectangular channel with base width and height ranging from 6' - 11' and 5' - 7', respectively. The primary objective is to provide 100-year flood protection to the community near the channel between Valley View Avenue and Sierra Avenue by collecting 100-year flows from the existing improved portion of Line NB upstream of Valley View Avenue and conveying them westerly in an upgraded channel until they are discharged into the existing North Norco Channel just east interstate 15. Chambers Group provides archaeological and paleontological monitoring of the sediment removal area. The Project area falls within a High A paleo area. Chambers Group is working with the District and the Soboba Tribe to provide full-time Paleontological monitor on-site that is also familiar with cultural resources.

### Superior Avenue Pedestrian and Bicycle Bridge CEQA/NEPA, Newport Beach, CA

Client: City of Newport Beach, Andy Tran, Senior Civil Engineer, (949) 644-3225, ATran@newportbeachca.gov, Length of time of Services: 04/2019 - Current

The City of Newport Beach proposed the construction of a pedestrian and bicycle bridge overcrossing





Superior Avenue, a new larger parking lot with a range of 100 to 128 parking spaces and a small passive recreational area on an approximately 3.4-acre site in the City of Newport Beach. One of the goals of the Project was to improve pedestrian and bicycle safety and access to Sunset Ridge Park. The proposed bridge would allow pedestrians and bicyclists to access the park without needing to cross via the existing at-grade crosswalk. Another goal of this Project was to provide additional parking to better serve organized sporting events at Sunset Ridge Park. The last goal was to include a small recreational component in the undeveloped area.

Chambers Group prepared all environmental documents to satisfy CEQA. Since construction of the bridge would be partially funded with federal Congestion Mitigation and Air Quality (CMAQ) funds, federal environmental clearance, mandated by the NEPA, was also required. Technical Studies (air quality, GHGs, energy and noise analyses, initial site assessments, hazardous materials analysis, Coastal California Gnatcatcher focused surveys, visual assessment, and photo simulations) and an Initial Study (IS)/MND were prepared as an appropriate CEQA documentation to provide the public and responsible agencies with information about the potential environmental impacts associated with implementation of the proposed Project. This IS/MND included a Project-level analysis of the potential effects associated with the Project. As a part of the NEPA documentation, Chambers Group was responsible for coordination with the California Department of Transportation (Caltrans) Local District and the resulting preparation of a Categorical Exclusion as the appropriate form of documentation.

Due to deadlines tied to Project funding, Chambers Group and the City worked in tandem regarding deliverables and review times to make sure the Project was kept on schedule. Chambers Group was able to quickly mobilize to provide the requested Coastal California Gnatcatcher focused surveys and jurisdictional delineation based on agency input. In addition, after working closely with both Caltrans and the City, Chambers Group was able to provide reasoning that supported the preparation of a visual technical memo rather than a full visual impact assessment, which kept the Project on track.

#### [City of Beaumont On-Call for Environmental Consulting Services, Beaumont, CA](#)

**Client: City of Beaumont, Christina Taylor, (951) 572-3212, Ctaylor@beaumontca.gov, Length of time of Services: 07/2026 - Current**

Commencing in July 2016, Chambers Group has completed a series of task orders to support the City with general CEQA compliance as well as conduct peer review of project applications and CEQA documents. Chambers Group has provided guidance and assistance with the preparation of all required environmental impact documentation (including CEQA documents, Consistency Evaluations, Environmental Check Lists, etc.); preparation and/or peer review of technical environmental reports and analyses (GHG studies, traffic studies, noise studies, surveys, water supply assessments, etc.); participation and testimony in public meetings; consultation on CEQA processes and requirements.



## I. Scope of Services

### Task 1: Project Management and Meetings

#### Task 1.1: Project Management

The Project Management task will cover internal management, invoicing, communication, coordination, reporting, preliminary reviews of received reports, drafting schedule updates and meetings with the City. This task assumes no more than four Project check-in meetings virtually taking no more than 1 hour with Chambers Group staff, one Project presentation, and one City meeting during Project approval, lasting no more than 3 hours. Additional work including out-of-scope items and additional meetings, including public meetings, will be provided with the submittal of a contract amendment.

**Deliverables:** An electronic copy of the meeting agendas if required.

#### Task 1.2: Kick-Off Meeting

**Kick-off Meeting:** Project initiation will begin with a kick-off meeting with the City and the Chambers Group Project team to discuss the project history, project description, specific project issues, and CEQA schedule; as well as receive available project information and technical reports. It is assumed that this information will include the geotechnical studies, site plans, permits, and other pertinent project information. This meeting is assumed to take no more than 2 hours. After the kick-off meeting, Chambers Group will develop a list of additional data needs.

**Deliverables:** One electronic copy of the data needs list.

### Task 2: Data Gathering and Analysis

This task will cover the data gathering and analysis outlined in the Request for Proposal (RFP) such as, reviewing relevant City documents including previously submitted permits for the original installation and/or ongoing maintenance, previously prepared reports and other referenceable documents, figure and map development for the CEQA document including but not limited to the location and vicinity, land use, zoning, wildfire, utilities, and other public services. Technical desktop research for specific resources including biological and cultural resources are outlined in Task 4. This task assumes one preliminary site visit and check-in meetings with City staff.

**Deliverables:** Results of this task such as the identification of potential environmental concerns, Project conflicts, and required figures shall be summarized into a memorandum submitted electronically for one round of review. Three hard copies shall be sent to the City after the memorandum has been finalized.

### Task 3: Investigations

#### Task 3.1: Geotechnical Investigation

Ninyo & Moore's geotechnical scope of services will include the following:

- Review of the existing Technical Memorandum prepared by Converse Consultants for the Cherry Avenue Channel, other available geotechnical reports for adjacent developments, and readily available geologic maps, published geotechnical literature, geologic and seismic data, aerial photographs, groundwater data, and in-house information.
- Geotechnical reconnaissance to document the existing surficial conditions at the proposed project site.



- Assessment of the general geologic conditions and seismic hazards affecting the site, and evaluation of their potential impacts on the Proposed Project. Evaluation of geologic impacts would include erosion potential, compressible soils, expansive soils, and shallow groundwater. Evaluation of seismic impacts would include potential surface rupture, ground shaking, and liquefaction.
- Preparation of a short report providing our findings and conclusions regarding geology and soils conditions that may impact the project and would be necessary to complete the final environmental document and associated permit applications.
- Consultation with other project consultants to provide geology/geotechnical input to the final environment documents.

#### Task 3.2: Phase I ESA

Ninyo & Moore's proposed scope of services for the Phase I ESA will include, but not necessarily be limited to, the following:

- A review of federal and state environmental record sources for the subject property and for properties located within the search radii prescribed by ASTM for the respective environmental record sources.
- A review of readily available and/or reasonably obtainable historical aerial photographs, Sanborn Insurance Maps, building plans, and United States Geological Survey Topographic Maps, etc.
- A subject property reconnaissance to visually evaluate subject property conditions.
- Interview owner representatives and/or other individuals familiar with the subject property, including past subject property operations, and construction history, if readily available and relevant.
- A subject property vicinity reconnaissance to evaluate conditions of adjacent or nearby properties for possible environmental influences on the subject property.
- Preparation of a Phase I ESA report that meets ASTM E1527-21 and EPA AAI reporting criteria.

**Assumptions:** The following assumptions have been made in the preparation of our scope of services.

It is the responsibility of the client to review environmental liens for the property or engage a title company to review such records. A lien search is not included as part of the proposed work scope. Ninyo & Moore can provide this service if requested as an additional service and fee.

In accordance with the ASTM E1527-21 standard, subject property-specific information will be requested from the user of the report in the form of a customized questionnaire or an interview with a designated representative, at the client's discretion.

Up to 4 hours have been estimated to review agency records for the subject property. Review of agency records for adjoining properties is not included in this proposal. Should available files require additional review time, additional cost to obtain, or other conditions be encountered that warrant additional research/evaluation (such as an in-person review of records at a local agency office), the client will be contacted for additional authorization. Up to 8 hours for the site reconnaissance are included in this task.

**Deliverables:** One electronic copy for one round of review and comment. Results to be incorporated into the IS.

#### Task 4: Environmental Services

##### Task 4.1: Air Quality, GHGs, and Noise Evaluation

Ldn Consulting will prepare air quality, GHG and noise evaluations for the proposed 24-21 Cherry Channel Drainage Project known as the "Project".



### Air Quality

- Construction-related activities and emissions will be evaluated. This would consist of building demolition, import/export of soil, mass grading, etc. A qualitative assessment of potential impacts from toxic air emissions will be included. Evaluate applicable GHG emissions associated with heavy-duty construction equipment combustion that will likely occur during the various phases of construction; emissions will be quantified using the California Emissions Estimator Model® (CalEEMod) emissions inventory model.
- Consistent with the Air Quality Management Plan (AQMD) a screening-level diesel health risk assessment will be prepared for emissions resulting from short-term project construction activity, specifically diesel particulate matter.
- If the Project exceeds the Screening-Level Criteria for Air Quality Impacts as identified by the Air Pollution Control District (APCD), more detailed analysis may be required to determine mitigation solutions and would be included.
- The analysis shall address consistency with the ARB's Air Quality and Land Use Handbook, and potential sources of toxic air contaminants (TACs) from the project and strategies to reduce emissions along with design features and mitigation measures consistent with the County and APCD.

### GHG

- Identify, characterize, and inventory any applicable GHG emissions currently being requirements (i.e., Assembly Bill's (AB) 32, 341, 1493, Senate Bill 97, and Executive Orders S-3-05, S-01-07, B-30-15).
- Evaluate applicable GHG emissions associated with heavy-duty construction equipment combustion that will likely occur during the various phases of construction. Evaluate net increase in applicable GHG emissions associated with mobile source activity. Data available from the project team and previous analysis will be utilized in characterizing GHG-generating activities.
- The results of this study effort will be summarized in a report as requested. The analysis will discuss the latest guidelines for Climate Change analyses as well as any California Air Resources Board (CARB) adopted thresholds of significance and the General Plan.

### Noise

- The anticipated construction activities noise levels will be identified to determine if short term impacts will occur at the adjacent property lines. The calculated noise levels will be propagated to the nearest residences using the logarithmic relationship describing the acoustical spreading or drop off rate of 6 dB per doubling of distance from the source. The propagated noise levels will be compared to the applicable standards. If potential impacts are identified, feasible mitigation measures will be designed.
- The analysis will discuss the local guidelines and adopted thresholds of significance for Noise.

### Revisions and Coordination

- If additional emissions reduction calculations, report revisions, environmental coordination or agency requests are required, LDN will work with the City to determine any and all additional efforts and associated costs prior to any additional work commencing. For budgeting purposes and to avoid contract changes when these services are requested, LDN will perform these additional services on a time and materials basis.

**Deliverables:** One electronic copy of the report for one round of review. Results to be incorporated into the Initial Study (IS).



#### Task 4.2: Biological Survey and Report (with MSHCP Consistency Analysis)

Chambers group will conduct a biological resources survey for the Project, including a habitat assessment, and will prepare a biological technical report which will include an analysis of the Project's consistency with Western Riverside County Regional Conservation Authority (RCA) Multiple Species Habitat Conservation Plan (MSHCP) requirements and recommended avoidance and mitigation measures.

Prior to conducting the biological resources survey, Chambers Group will review the RCA MSHCP Information Map for applicable criteria and survey requirements for the assessor parcel number(s) containing the Project. Survey requirements for MSHCP species not adequately covered will also be reviewed. The U.S. Department of Agriculture (USDA) Natural Resources Conservation Service (NRCS) soil survey will be reviewed to identify soils that occur within the Project site. The USFWS National Wetlands Inventory (NWI), the U.S. Geological Survey's (USGS) National Hydrography Dataset (NHD), Google Earth imagery, and historical aerial photographs of the Project site and vicinity will be reviewed for hydrological features that may fall under the regulatory jurisdiction of the USACE pursuant to Section 404 of the Clean Water Act, RWQCB jurisdiction pursuant to Section 401 of the Clean Water Act, and CDFW jurisdiction pursuant to Section 1602 of the Fish and Game Code. This task will also include a review of CDFW's California Natural Diversity Database, the California Native Plant Society's Electronic Inventory, and the USFWS' Information for Planning and Consultation for existing records of listed and/or special status plant and wildlife species and habitats occurring on or in the vicinity of the Project.

After conducting the literature review, biologists will conduct the biological resources survey and habitat assessment within the approximately 3-acre Project site. Chambers Group biologists will document the presence of common and sensitive biological resources, both flora and fauna, within the Project boundaries. The survey will focus on determining the potential presence of federal- and state-listed or otherwise special status plant and wildlife species and sensitive habitats, including suitable habitat for burrowing owl, birds associated with riparian/riverine areas, and narrow endemic plants including Yucaipa (Marvin's) onion and many-stemmed dudleya. Per the *Burrowing Owl Survey Instructions for the Western Riverside Multiple Species Habitat Conservation Plan Area* (survey instructions; protocol), if burrowing owl habitat are found on site a 500-foot boundary around the Project site will be walked (where accessible and permitted), to map suitable burrowing owl habitats. All vegetation communities and other landcover types will be mapped, qualitatively described, and assessed for the potential for occurrence for special status species. Photographs will be taken to document the conditions of the Project site at the time of the survey. All plant and wildlife species observed or detected during the survey will be recorded.

Chambers Group will prepare a biological technical report that will include an introduction, methods used to conduct the survey, results of the survey documenting the existing biological resources, a discussion of special status plant and wildlife species with the potential to occur on the Project site, an analysis of the Project's consistency with MSHCP requirements), recommended avoidance and mitigation measures, and any required focused surveys.

The report will contain up to 40 pages of text and tables, up to eight figures, and up to 80 pages of appendices including literature searches, site photographs, and lists of plant and wildlife species observed or detected during the survey.

The biological resources survey will be conducted within 2 weeks of receiving the NTP. Chambers Group will submit three hard copies and one electronic copy of the draft biological technical report to the City



within 4 weeks following the completion of the biological resources survey and habitat assessment. Chambers Group will incorporate one round of comments from the draft report into a final report and will deliver three hard copies and one electronic copy of the final report to the City upon completion. Geographic information system (GIS) shapefiles will also be provided to the City.

**Assumptions:** The level of effort for Task 4.2 assumes two biologists surveying the site in 1 day. If additional survey time is required due to unforeseen circumstances, Chambers Group will revise the cost in coordination with the City.

The scope of work for Task 4.2 does not include focused surveys or a formal jurisdictional delineation. If needed, BUOW focused surveys will be provided under Task 4.3. A formal jurisdictional delineation and reporting is provided under Task 5.1. If additional focused surveys are required based on the results of the biological resources survey, Chambers Group will provide them as a separate scope and cost. The scope of work for Task 4.2 includes up to 4 hours for responding to agency letters and comments.

While not anticipated, if any published updates to the Consistency Analysis Report Template should occur prior to the biological technical report/MSHCP consistency analysis being completed, and if the updates should substantially change the level of work required for this report or require any additional studies be conducted prior to analysis, Chambers Group will revise reporting costs (if needed) after approval from the City.

**Deliverables:** One electronic copy of the report for one round of review and comment. Results to be incorporated into the IS.

#### **Task 4.3: Burrowing Owl Survey Instructions for the MSHCP (if needed)**

Based on the results of the biological resources survey and habitat assessment, if suitable burrowing owl habitat is present on or adjacent to the Project site, a focused burrow survey and focused burrowing owl surveys must be conducted in accordance with the survey instructions. The purpose of focused burrowing owl surveys is to identify if, when, and how the site is being used by burrowing owls. Focused burrowing owl surveys will be conducted within the approximately 3-acre Project site and a 500-foot buffer (survey area). Following the survey instructions protocol, the burrowing owl focused surveys will include a minimum of one, and up to four separate site visits during the burrowing owl breeding season (March 1 through August 31).

The first visit will include a focused burrow survey to locate and map location of all suitable burrowing owl habitat, potential owl burrows, burrowing owl sign, and any burrowing owls; if no potential burrows or burrowing owls are detected, no further surveys are required. If the survey area contains natural or man-made structures that could potentially support burrowing owls, or owls are observed during the burrow surveys, four separate site visits during the burrowing owl breeding season must be conducted. The first focused survey may be conducted concurrent with the focused burrow survey. The remaining three focused burrowing owl survey visits will be conducted as specified in the survey instructions protocol. During each focused survey, dominant plant species and all wildlife species observed/detected will be recorded, and site photographs will be taken depicting the survey area and any evidence of burrowing owl.



According to the protocol, surveys will not be conducted during rain, winds greater than 20 miles per hour, dense fog, or temperatures over 90 degrees Fahrenheit. Potential burrowing owl burrows will be examined for burrowing owl sign and all evidence of burrowing owl or burrowing owl sightings within the Project site will be documented, digital photographs will be taken, and locations will be recorded using a handheld Global Positioning System (GPS) device.

After completing the required field surveys, methods and findings will be summarized and incorporated into a focused survey report. The locations of any suitable burrows, burrowing owls, or burrowing owl sign encountered will be mapped and corresponding GPS coordinates will be provided. The report will include up to 15 pages of text, tables, and figures and up to 20 pages of appendices including Plant and wildlife species lists, site photographs, and field survey forms. Chambers Group will submit three hard copies and one electronic copy of the draft burrowing owl focused survey report to the City within 4 weeks following the completion of the final survey. Chambers Group will incorporate one round of comments from the draft report into a final report and will deliver three hard copies and one electronic copy of the final report to the City upon completion. GIS shapefiles will also be provided to the City.

**Assumptions:** The cost for Task 4.3 includes two biologists surveying the Project site and buffer in one full day during the first site visit, and in a half-day (either a dawn or dusk survey), during each of the three subsequent site visits. If for unforeseen circumstances additional survey days are necessary (e.g., adverse weather conditions canceling a survey), Chambers Group will provide them after approval from the City. The scope of work for Task 4.3 includes up to 2 hours for responding to agency letters and comments.

#### Task 4.4: DBESP Report

After all required surveys for the Project have been conducted and the respective survey reports have been prepared and accepted, Chambers Group will prepare a DBESP. The DBESP will follow the most-recent version of the DBESP template available on the Regional Conservation Authority's website, and will include Executive Summary, Introduction, Riparian/Riverine Mitigation (MSHCP Section 6.1.2), Narrow Endemic Plant Species Mitigation (MSHCP Section 6.1.3), Additional Survey Needs (MSHCP Section 6.3.2), Delhi Sands Flower-Loving Fly (MSHCP Section 6.3.2), and Reference section, and supporting appendices.

The DBESP report will include up to 30 pages of text, tables, and figures and up to 250 pages of supporting appendices (including biological surveys and jurisdictional delineation reports). Chambers Group will submit three hard copies and one electronic copy of the draft DBESP report to the City within 4 weeks following completion of all required Project surveys and reports. Chambers Group will incorporate one round of comments from the draft DBESP report into a final DBESP and will deliver three hard copies and one electronic copy of the final report to the City upon completion.

**Assumptions:** While not anticipated, if any published updates to the MSHCP DBESP template should occur prior to the DBESP for the Project being completed, and if the updates should substantially change the level of work required for this report or require any additional studies be conducted prior to analysis, Chambers Group will revise the cost of the DBESP (if needed) after approval from the City. The scope of work for Task 4.4 includes up to 4 hours for responding to agency letters and comments.

**Deliverables:** One electronic copy of the report for one round of review and comment. Results to be incorporated into the IS.



#### Task 4.5: Cultural Resources Literature Review, Desktop Research and Consultation

##### Task 4.5.1: Literature Review and Desktop Research

Chambers Group will conduct a literature review, including a review of the findings of a records search through the California Historical Resources Information System (CHRIS) database at the appropriate Information Center (IC). The records search will be conducted by IC staff and review relevant previously recorded cultural resources and previous investigations completed for the half-mile search radius surrounding the project site. A paleontological records search will also be completed for the half-mile search radius surrounding the Project site by the relevant Natural History Museum.

In addition to the above research, a request that the Native American Heritage Commission (NAHC) will be submitted for a review of their sacred land files (SLF). This search will identify if any resources important to Native Americans have been recorded within the project area and surrounding vicinity. The NAHC will provide the results and a list of affiliated tribal representatives to contact for additional information. Chambers Group will provide the results of the NAHC SLF search and list of tribes in the desktop cultural resources letter report. Note: This research alone does not satisfy the lead agency's requirements under AB 52. It is assumed that the lead agency will conduct AB 52 Tribal Consultation. Upon request, Chambers Group can assist in coordinating AB 52 consultation requirements (see Task 4.5.3).

#### Assumptions:

- The City will provide Chambers Group with confirmation on the Project footprint at the time of authorization or NTP. It is assumed that this information will not change once Chambers Group has initiated the tasks above.
- All required records searches will be submitted within 1 week of receipt of NTP.
- Fees incurred by the IC and Museum to conduct the record searches, estimated at \$1,380.00, are included as part of this task. We will bill the actual amount these institutions charge without a markup.
- Currently, the IC estimates 6 to 8 weeks from the date of request to provide results for a records search. In addition, fees incurred by the relevant Natural History Museum to conduct the paleontological record search are included as part of this estimated cost. Currently, the Museum estimates 2 to 3 weeks from the date of request to provide results for a records search. Currently, the NAHC estimates 6 to 8 weeks from the date of request to provide results for the SLF request.
- This task does not currently include the issuance of NAHC Scoping Notification Letters to NAHC-listed points of contact to request information regarding the proposed Project site. These informal evidence gathering letters are not a substitute for government-to-government consultation by the permitting agency. If the SLF search returns positive results and/or the City requests that these notification letters be transmitted, a revised scope of work and cost will be necessary.
- This task assumes that no previously documented cultural resources are recorded within the Project site. If the records search data reveals that potentially significant cultural resources are documented within the Project site and/or surrounding half-mile radius study area that may be affected by the Project, further research, such as a field survey, may be required, at additional cost.
- This task does not include cultural resources survey, testing, data recovery, analysis, monitoring, or similar programs.

**Deliverables:** This task includes a records search requests, review of results provided, and minimal research to be incorporated within the Cultural Resources Report.





#### Task 4.5.2: Cultural Resources Desktop Report

Chambers Group will complete a desktop study and prepare a Cultural Resources Report deliverable. The Cultural Resources Report will be prepared according to Archaeological Resource Management Report (ARMR) Guidelines and California State Historic Preservation Office (SHPO) Guidelines, detail the methods used, and describe the results of the records search, all additional research and literature review, and any related recommendations. The report will not include results from an on-ground survey of the proposed Project site as it is perceived that little meaningful data can be gleaned from a pedestrian survey of the area due to the location of proposed direct impacts being located within compacted, semi-impervious surfaces within an active channel system. The report is assumed to contain up to 30 pages of text, graphics, and appendices. The report will also discuss the paleontological records search results and the basic geologic context of the Project site, to support any related recommendations regarding paleontology, as well as addressing the results of the NAHC SLF records search.

#### Assumptions:

- Chambers Group will provide a draft report to the City for review within 4 weeks after receipt of all requested records search data.
- This task cost estimate assumes that only one round of consolidated report comments from the City will be received to be incorporated into the final document within 2 weeks after draft review. If additional comments are received, a revised scope of work and cost for additional review may be necessary.
- This task does not include cultural resources, survey, testing, data recovery, analysis, monitoring, or similar programs. It is assumed that existing hardscape, geo-material liner, and landscape features located within the proposed Project site will preclude effective ground surface visibility and impede the ability to adequately identify and assess the presence of archaeological resources. Therefore, an on-foot survey of the Project site is NOT recommended. Should an archaeological resources inventory survey be required a separate scope and cost will be required.
- This task does not include survey and analysis of historic period-built environment resources. It is assumed that no such resources are located within the Project site or adjacent right-of-way (publicly accessible surface streets). If historic period-built environment infrastructure is identified within the Project right-of-way, and may be affected by the Project, these resources would need to be evaluated for eligibility for listing on the National Register of Historic Places, the California Register of Historical Resources, and/or a local register. If historic period-built environment resources that may be affected by the Proposed Project are identified, a separate scope and cost will be required to assess these resources.

**Deliverable:** One electronic copy of the Desktop Cultural Resources Report. Results to be incorporated into the IS.

#### Task 4.5.3: AB 52 Tribal Consultation Support

AB 52 required an update to CEQA Appendix G to include a new category titled “Tribal Cultural Resources”. As a Lead Agency, the City is required to conduct AB 52 consultation with requesting tribal groups on a government-to-government basis.



This task will provide support to the City including, but not limited to preparing and transmitting Request to Consult Letters to respective tribes via email and certified mail; support with consultation regarding the proposed Project plans and potential impacts; support arranging conference calls with tribes; and/or development of mitigation measures, as appropriate. Should any tribe request a site visit, or require further calls to conclude consultation, it is assumed that City will cover this expense and provide the tribe(s) an opportunity to visit the Project site.

**Assumptions:**

- It is assumed that City has a prepared list of no more than three Tribal Representatives who have previously expressed a desire to be notified when a project requires AB 52 consultation.
- This task includes AB 52 consultation support with requesting tribal groups and includes time for assisting and/or attending up to three 1-hour meetings with City Staff and tribal members in an online forum, and up to 2 hours to assist drafting potential mitigation measure language.
- This proposal does not include attending field visits requested by tribal groups requesting consultation.

**Deliverable:** Up to four Request to Consult Letters and Project site maps for District review; assist with up to three 1-hour consultation meetings; prepare Tribal Consultation Summary memo.

**Task 4.6: CEQA Documentation**

**Task 4.6.1: Project Description and IS**

**Project Description:** Chambers Group will develop a comprehensive description for the Proposed Project that will form the basis for the analysis of the potential impacts on the environment, based on the information provided by the City. The project description will include a narrative and graphical presentation of the Proposed Project, including components, location and boundaries, regional and vicinity maps, and a statement of the Project goals and objectives.

**Prepare IS Checklist:** Chambers Group shall prepare an IS Checklist to determine the appropriate level of CEQA documentation for the Proposed Project which is assumed to be either a Negative Declaration (ND) or MND. The IS will be prepared using the most recent revision of the IS Environmental Checklist Form suggested in the CEQA Guidelines Appendix G or utilizing a format preferred by the City in compliance with CEQA Section 15063. Chambers Group will provide one electronic PDF copy of the Administrative IS Checklist for District review.

**Deliverables:** One electronic copy of the project description and IS checklist for one round of review and comment.

**Task 4.6.2: Draft MND**

**Prepare Administrative Draft MND:** If one or more significant impacts are identified during the IS process, and in the technical reports prepared for Tasks 4.2 to 4.5 and Task 5, CEQA allows the preparation of an MND when those impacts can be mitigated to a less-than-significant level. The preparation of an ND is similar to MND, with the exception that an MND includes mitigation measures. Therefore, the description of an MND is provided in this task.



For each CEQA environmental checklist discipline item, the existing environmental setting of the Proposed Project site and surroundings will be characterized from the existing literature base and a site visit by an environmental analyst. An environmental impacts analysis will be prepared for each checklist entry. Based on CEQA-defined significance criteria, Chambers Group will determine the potential for any adverse or significant adverse impacts and present mitigation measures to reduce any such impacts to a level below significance. Chambers Group will provide one electronic PDF copy of the Administrative Draft MND for one round of City review and one round to finalize the revised changes.

**Prepare/Distribute the MND and Notice of Intent:** For submittal to the Office of Planning and Research (OPR), Chambers Group will draft a Notice of Intent (NOI), Notice of Completion (NOC), Summary Form, and the Public Draft IS/MND with associated appendices to be submitted electronically on behalf of the City. The City must approve Chambers Group as a submitter for the City on the OPR CEQANet Web portal.

Chambers Group will prepare the NOI for distribution during the public review to agencies, interested parties, and property owners adjacent to the Proposed Project from an approved distribution list provided by the City. We assume up to 25 mailings of the NOI via regular mail to adjacent property owners and up to 10 mailings of the NOI via certified mail to agencies and other interested parties. Chambers Group will file the NOI to adopt an MND with the County Clerk. We assume the City will be responsible for newspaper publications or on-site postings.

**Note:** This task does not include attendance at any public or community outreach meetings. The environmental document will not be circulated until AB 52 consultation has been concluded.

**Deliverables:** One electronic PDF copy of the Public Review Draft MND and technical reports as appendices for distribution. Up to three hard copies of the Public Review Draft MND with technical reports/appendices on thumb drive or CDs. Up to 25 mailings to adjacent property owners via regular mail, and up to 10 mailings to agencies and interested parties via certified mail. State Clearinghouse submittal will be done electronically. Should additional mailings be required; Chambers Group can prepare and mail additional notices at an additional cost.

#### Task 4.6.3: Final MND

**Prepare Final MND with Response to Comments:** Based upon comments received from public review, responses to the comments will be prepared. For the purposes of this proposal, up to 15 comment letters on the IS/MND are assumed, with responses requiring minimal further investigation or studies. A draft of these responses will be provided to the City. Upon receipt of one complete set of comments from the City on the responses, a Final MND will be prepared. This document combined with the Draft MND will constitute the Final MND to be used by the City when considering approval of the Proposed Project. This Task will include up to two rounds of comments from the City.

**Prepare MMRP and NOD:** Following preparation of the MND, Chambers Group will prepare a Draft MMRP. The Final MMRP incorporating the City's comments will be incorporated into the Final MND. The Notice of Determination (NOD) is filed following the City's decision to carry out or approve the Proposed Project for which the MND has been prepared. Chambers Group will prepare the NOD and will file the NOD with the State Clearinghouse and the County Clerk. The City will be responsible for CDFW filing fees, if necessary. Chambers Group will provide up to three hard copies of the NOD; the NOD is to be filed electronically with the State Clearinghouse and one filed with the County Clerk.



**Deliverables:** Three hard copies of the draft Final MND and reviewed Final MND with the technical reports/appendices on thumb drive or CD.

## Task 5: Jurisdictional Delineation and Regulatory Permitting

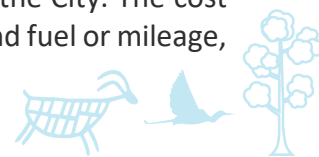
### Task 5.1: Jurisdictional Delineation

Chambers Group will conduct a desktop analysis prior to the field survey and delineation of Cherry Channel. USGS quadrangle maps and hydrological features, NRCS soil survey maps, NHD maps, USFWS NWI maps, and historical aerial imagery will be reviewed. Aerial imagery of the Project site and immediately adjacent areas will be searched for other potentially jurisdictional features including v-ditches, culverts, swales, etc., and potential connectivity to any Traditional Navigable Waters.

Potential waters and wetland habitats on the site will be evaluated using the methodology set forth in the *Corps of Engineers Wetland Delineation Manual* (USACE 1987) and the *Regional Supplement to the Corps of Engineers Wetland Delineation Manual Arid West Region Version 2.0* (USACE 2008). This preliminary jurisdictional delineation will be consistent with the 2023 Rule revising the definition of Waters of the United States (WoUS) and the August 29, 2023, amendment and includes measurement of the Ordinary High Water Mark (OHWM) to determine WoUS. Surveyors will walk the Project site, specifically Cherry Channel, and will identify and map limits of jurisdiction with a submeter GPS device. The surveyors will document the boundary of the OHWM and Bank to Bank features as identified within the Project site. Hydrologic indicators include evidence of inundation, saturation, watermarks, drift lines, and sediment deposits. OHWM data will be recorded on USACE Rapid Ordinary High Water Mark Field Identification Data Sheets. Soils will be investigated for hydric characteristics. Wetland boundaries (if present) will be determined using the current accepted methodology prescribed in the USACE 1987 and USACE 2008. This method requires positive evidence of hydrophytic vegetation, hydric soils, and wetlands hydrology to be considered a wetland. If potential wetlands are identified, soil pits will be established to determine the wetlands/uplands boundaries. Soil pit data will be recorded on USACE Arid West Region Wetland Determination Forms. The boundaries of hydrological features will be mapped in a shapefile that will distinguish each agency's respective jurisdiction (USACE, CDFW, and RWQCB) based on current agency guidance documents. Photographs of hydrological features and any soil pits will be taken. Vegetation communities will be mapped during the biological resources survey under Task 4.2

The jurisdictional delineation will be conducted within two weeks of receiving the Notice to Proceed. Following the survey, Chambers Group will prepare a preliminary jurisdictional delineation report documenting the survey results. The report will include Introduction, Regulatory Overview, Methods, Results, Summary of Jurisdictional Findings, Conclusions and Recommendations, and Reference sections. The report will include up to 35 pages of text, tables, and figures and up to 20 pages of appendices including photographs of the site, OHWM and wetland determination datasheets, and plant and wildlife species lists. Chambers Group will submit three hard copies and one electronic copy of the draft preliminary jurisdictional delineation to the City within 4 weeks of conducting the survey. Chambers Group will incorporate one round of comments into the final report and will submit three hard copies and one electronic copy of the final report to the City upon completion. GIS shapefiles will also be provided to the City.

**Assumptions:** The level of effort for Task 5.1 assumes one biologist conducting jurisdictional delineation in 1 day concurrently with the biological resources survey. If additional survey time is required due to unforeseen circumstances, Chambers Group will revise the cost in coordination with the City. The cost for Task 5.1 includes field survey time, mobilization/demobilization time, vehicle use and fuel or mileage,



personal protective equipment, submeter GPS and camera use, data management, project management time, GIS support, and reporting time.

The scope of work for Task 5.1 includes up to 4 hours for responding to agency letters and comments.

#### **Task 5.2: USACE, RWQCB, and CDFW Permit Coordination and Applications**

Chambers Group assumes the City will directly pay any associated project permit fees to the corresponding regulatory agencies for this task, as applicable.

**Preparation of USACE 404 Permit Applications:** The level of work associated with preparing the notification to the USACE pursuant to Section 404 is dependent on the magnitude of project impacts on jurisdictional waters and other resources. The delineation determines if the project requires an individual permit or if it could fall under a nationwide permit. For scope and costing purposes, Chambers Group assumes the project would qualify for a Nationwide Permit (NWP), which would expedite the permitting process compared to an Individual Permit. If it is determined that a NWP is not valid for the final project description, Chambers Group will inform the City and additional costs may be required, depending on the application requirements. This cost estimate includes preparation of the notification package, including support information in compliance with the NWP and minimal, minor coordination with USACE is included.

**Preparation of Written Notification for Water Quality (401) Certification:** A water quality certification is required from the RWQCB for any activity that requires a federal license or permit (such as a Section 404 permit) and may result in a discharge to jurisdictional waters. RWQCB requires pre-filing application meetings a minimum of 30 days prior to the submittal of an application. Chambers Group will coordinate the meeting and prepare and submit the necessary documentation to the RWQCB for its review of the project pursuant to water quality certification. Chambers Group will schedule one additional meeting with the RWQCB at the Project site, if necessary, to facilitate the RWQCB's review of the Project and completion of the water quality certification. This cost estimate includes no more than two rounds of comments from RWQCB and those comments do not request or require further study than what is readily available and/or identified in this proposal.

**Preparation of CDFW 1600 Permit Application:** Chambers Group will prepare and submit a notification to CDFW for a 1600 Lake and Streambed Alteration Agreement (SAA). CDFW has transitioned to an entirely online application process through the Environmental Permit Information Management System (EPIMS). This will require the City to have an account on EPIMS to initiate the permit application and sign any documentation. Chambers Group assumes the City will provide permissions to fill out the application on the City's behalf, but assumes the City will sign the application. Chambers Group will schedule one meeting with CDFW at the Project site, if necessary, to facilitate CDFW's review of the Project and completion of the Agreement. This cost estimate includes no more than two rounds of comments from CDFW and those comments do not request or require further study than what is readily available and/or identified in this proposal.

**Permit Application Processing:** Chambers Group will coordinate with USACE, CDFW and RWQCB throughout their review of the regulatory permit applications to ensure that any potential concerns are made known to the City and resolved at the earliest possible opportunity.



If the regulatory permits are being prepared in concurrence with the CEQA document rather than subsequent, they will be submitted to the agencies at the time of the Draft circulation to ensure that the permits are processed in a timely manner along with the rest of the Project. This also ensures that the agencies are involved in the preparation of the environmental document and mitigation development, if necessary.

**Deliverables:** Draft and Final Permit Applications for 404 NWP, 401 WQC, and 1600 LSAA

### **J. Cost Proposal**

Submitted in a separate, sealed envelope.

### **K. Other Information**

Chambers Group has provided the City with environmental services for several years on various development projects. *We are knowledgeable not just on City processes but also with the existing biological and cultural environment within the City and County, as well as agencies and organizations that have interests in the area such as CDFW and various tribal governments.*



**Appendix - Key Team Members' Resumes**



## Eunice Bagwan

Project Manager

### Education

MS, Environmental Management and Planning, Johns Hopkins University, Baltimore, MD 2015

BS, Environmental and Occupational Health and Safety, California State University, Northridge, CA 2011

### Training

NEPA Basics – Fundamentals:2018  
Advanced CEQA Essentials: 2019  
SCE's EDGE Program Safety First Workshop 2016

### Affiliations

Association of Environmental Professionals: Inland Empire Vice President of Membership  
Conservation Steward: North Etiwanda Preserve

- IS/MND for Commercial Center
- Oakridge RV Storage
- Beaumont Brookside

### Professional Experience

Eunice Bagwan has a background in CEQA and NEPA environmental impact assessments as well as technical writing and editing. She has assisted with the preparation, writing, and editing of environmental documents, such as IS/MNDs, Categorical Exemptions, EIRs and safety related documents such as job hazard safety forms and safety plans. Eunice has also managed and co-managed various projects as a Deputy Project Manager and Project Manager.

### Project Experience

#### On-Call Contract, City of Beaumont, Riverside County, CA

**Project Manager.** Chambers Group was selected to provide on-call environmental services to the City of Beaumont. Services include peer review of previously prepared IS/MND for various City projects. The team assisted in peer review of the environmental documents focusing on technical sections such as Aesthetics, Agricultural Resources, Geology/Soils, Hazardous Materials, Hydrology, Land Use, Mineral Resources, Public Services, Recreation, and Utilities/Service Systems. Task Orders include:

- Task Order Hidden Canyon Industrial Park Plot Plan
- Task Order Initial Study/Mitigated Negative for Commercial Center
- Task Order Initial Study/Mitigated Negative Declaration
- Task Order Oakridge RV Storage
- Task Order Beaumont Brookside, Beaumont, CA

#### Woodcrest-Rinehart Acres Drainage Project, Riverside County Flood Control District, CA

**Environmental Planner.** The Woodcrest-Rinehart Acres Drainage Project consists of placing a series of 100-year storm drain facilities ranging in diameter from 24-60 inches (in.), placement of a water quality/extended detention basin, and street improvements. The street improvements consist of the paving of Granite Avenue and Boulder Avenue from their intersection with Taft Street to the west to their intersection with Wood Road to the east. Additionally, Dallas Avenue will be paved from its intersection with Taft Street to the west and continuing east until the entry point of the Woodcrest-Rinehart Acres Basin about 650 Linear Feet east of Wood Road. The street improvements for these paved roads also include 4-6-in. AC berm. Chambers Group was retained to conduct a Jurisdictional and Wetland Delineation, a Biological Reconnaissance Survey and Technical Report, and an MSHCP Consistency Analysis.

#### Orange County Public Works, Initial Study/Negative Declaration for the Orange County Code of Ordinance Proposed Project Amendment, Newport Beach, Orange County, CA

**Assistant Planner.** The County proposed to amend the Orange County Code of Ordinance by legalizing the presence of dogs to a portion of the mouth of the Lower Santa Ana River, located between the City





of Newport Beach and Huntington Beach. Eunice composed the project description of the project and assisted in drafting the IS checklist on analyzing potential impacts of the proposed project on the project area focusing on Aesthetics, Agricultural Resources, Geology/Soils, Hazardous Materials, Land Use, Mineral Resources, Public Services, Recreation, and Utilities/Service Systems. Eunice drafted the required notices and prepared the distribution list for public circulation. Due to public concern of the proposed project, Chambers Group prepared a draft and final ND at an expedited rate in order to meet County deadlines.

### **Superior Avenue Pedestrian and Bike Bridge and Parking Lot, City of Newport Beach, Orange County, CA**

**Environmental Planner.** Eunice aided the project team as an Environmental Planner for the Superior Avenue Pedestrian and Bicycle Bridge and Parking Lot project. The project intended to expand recreational options in the City as well as provide improved safety and access to Sunset Ridge Park for pedestrians and bicyclists. The entire project site is located within the boundary of the coastal zone as established by the California Coastal Act and is therefore under the land use planning and regulatory jurisdiction not only of local government agencies, but also the California Coastal Commission. The project required consideration of two architectural design options, application for a Coastal Development Permit, as well as completion of a Visual Assessment, a Hazards Assessment, a Jurisdictional Delineation under Section 404 of the Clean Water Act, a NEPA categorical exclusion, a Biological Technical Report, and various documents for the California Department of Transportation. Eunice assisted the project team by preparing and analyzing sections of the Initial Study/Mitigated Negative Declaration and incorporated technical information from the Natural Environment Study and Hazardous Materials Assessment. She also assisted in preparing a Visual Technical Memo to evaluate the potential impacts to visual resources of the project. Eunice also drafted the Final Mitigated Negative Declaration as well as assisted the Project Manager in drafting Responses to Comments received during the public review period.

### **Dominguez Creek Bridge Permits, RKA Consulting Group, Carson, Los Angeles County, CA**

Assistant Environmental Planner. Eunice drafted a Water Quality Report to identify the potential impacts of the proposed Sepulveda Boulevard widening over the Dominguez Channel with regard to water quality. Discussion points include local and regional hydrological setting, geology and soils, surface and groundwater quality objectives, and compiling biological information such as anticipated impacts to the aquatic environment.

### **Jamboree Road Widening Main to Barranca, Irvine, CA**

**Environmental Planner.** The City of Irvine proposed the widening of the eight-lane Jamboree Road segment from Main Street and Barranca Parkway to a 10-lane road that accommodates bicyclist and pedestrian transportation. Chambers Group provided support to the City in preparing CEQA documentation and technical studies for the project. Eunice, in coordination with the Project Manager, prepared the Initial Study/Mitigated Negative Declaration to analyze the potential environmental effects associated with the proposed roadway widening, including incorporation of the results of prepared technical studies such as Air Quality and Greenhouse Gases Impact Analysis, Biological Resources Technical Report, Cultural Resources, Jurisdictional Delineation, Noise Impact, and Traffic Impact Analysis.



## Mike McEntee

Principal in Charge

### Education

BA, Biology, California State University, Fullerton, 1995

### Training

Southwestern Willow Flycatcher Workshop, Southern Sierra Research Station

Marine Corps Certified Range control OIC/RSO

BLM Flat-Tailed Horned Lizard Training

### Certifications

California gnatcatcher: authorization to survey, locate and monitor nests, remove brown-headed cowbird eggs and chicks from parasitized nests; USFWS Permit #TE099463-0; Least Bell's vireo: authorization to locate and monitor nests, remove brown-headed cowbird eggs and chicks from parasitized nests; United States Fish and Wildlife Service (USFWS) Permit #TE099463-0

Southwestern willow flycatcher: authorization to survey, locate and monitor nests, remove brown-headed cowbird eggs and chicks from parasitized nests; USFWS Permit #TE099463-0

### Affiliations

Member of the USFWS and USGS least Bell's vireo, southwestern willow flycatcher, and yellow-billed cuckoo recovery working group

## Professional Experience

Mike McEntee is an environmental professional with over 20 years of consulting experience. He has extensive experience working on a broad range of complex and highly controversial environmental issues with an emphasis in natural resources and regulatory compliance. He has managed multidisciplinary teams and prepared technical analyses in compliance with California Environmental Quality Act (CEQA), National Environmental Policy Act (NEPA), the federal and state Endangered Species Act, Safe Drinking Water Act, and other State and federal regulations.

Mike has a proven background as a Project Principal providing environmental solutions for construction and engineering projects. He focuses on engaging team members to communicate, solve problems, and deliver the highest quality solution.

## Project Experience

### Atwell Development Project Phases 3-8, Tri Pointe Homes, Banning, Riverside County, CA

**Principal in Charge.** The Atwell Development Project area covers 1,523 acres owned by Tri Pointe Homes (formerly Pardee Homes). The project proposes the development of eight phases over an estimated 30-year implementation period. The project's phased construction approach will include residential homes, parks, open space, and commercial use areas.

### Sea Summit at Marblehead Preserve and Coastal Development Project, San Clemente, CA

**Principal Biologist.** This 250-acre site is the last large coastal property to be developed along the Orange County coastline. Mike provided environmental consulting services, which included supplying technical assistance needed to acquire a Coastal Development Permit and ensure compliance with all other applicable permits, as well as conduct focused gnatcatcher surveys, construction monitoring, ecological restoration, and performance monitoring for 5 years. He ensured compliance with all conditions of the Habitat Management Plan (HMP) during initial vegetation clearing/grubbing, erosion control and project construction phases. Restoration efforts included enhancement of native grasslands and coastal bluff scrub. The HMP was designed to maximize the habitat value for coastal California gnatcatcher and other species dependent on sage scrub as well as to enhance the functional value of the preserved/restored wetlands within the canyons by improving connectivity and allowing for wildlife movement between each area.



**On-Call Environmental Services, Orange County Public Works (OCPW), Orange County, CA**

**Program Manager.** Mike provides oversight in Chambers Group coordination with OCPW regarding regulatory permits, including coastal permits, biological resource surveys for sensitive species/habitat, protocol-level surveys, environmental documentation, jurisdictional delineations of waters and wetlands, and construction monitoring in support of regulatory permits in Orange County.

**On-Call Environmental Services, Los Angeles County Public Works (LACPW), Los Angeles County, CA**

**Program Manager.** Mike was responsible for coordination with LACPW and oversight for CEQA compliance, biological surveys, and wetlands delineations, involving numerous sites located in Los Angeles County and the Angeles National Forest. Over 150 task orders have been completed on the on-call contract over the past decade. The surveys and reports were required by the United States Forest Service (USFS), United States Army Corps of Engineers (USACE), CDFW, and Regional Water Quality Control Board (RWQCB) to allow Los Angeles County to conduct maintenance and improvement activities. Individual projects have included: Angeles Forest Highway Over Mill Creek, Natural Environment Study (NES) and Biological Assessment (BA); Big Tujunga Wash Master Mitigation Bank Plan, Biological Services; Sierra Highway Widening and Realignment, Jurisdictional and Wetland Delineations, and Regulatory Permitting; Cooks Canyon Crib Dam M1-A Debris Basin Dewatering System, Vegetation Surveys; Live Oak Reservoir Cleanout, CEQA/NEPA Services; Spunky Canyon Road Sediment Removal, Biological Services; Avalon Bridge Over Dominguez Channel, Biological Resource Survey and Jurisdictional and Wetland Delineation; Fitch Avenue Bridge Replacement, Biological and Cultural Services; and Sierra Highway Over Mint Canyon Wash, Biological Survey.

**Big Tujunga Wash Mitigation Support for the 2017 fires, LACPW, Sunland, Los Angeles County, CA.**

**Principal in Charge.** Mike provided program management and helped develop an approach to restore the mitigation bank after the 2017 fires. He oversaw the preparation of a conceptual mitigation plan. The purpose of the plan was to serve as a guide for implementation of the potential enhancement programs after the site burned. The plan discussed strategies for habitat restoration and revegetation, exotic plant eradication, formal trails establishment, exotic wildlife eradication, public outreach, water quality monitoring, and functional analysis.

**Sanitation Districts of Los Angeles County On-Call, Los Angeles County, CA**

**Program Manager.** Mike was responsible for coordination with Los Angeles County Sanitation Districts project managers, contractors, regulatory agencies, and oversight for CEQA compliance, biological surveys, and mitigation monitoring. The project involved numerous sites located within the Sanitation Districts of Los Angeles County's 800-square mile service area. The Sanitation Districts of Los Angeles County required biological/environmental support to construct, operate and maintain facilities to convey, treat, recycle, and dispose of sewage and industrial wastes and generate recycled water, electrical power, and biosolids as part of the treatment process.



## Thomas Strand

Technical Advisor

### Education

MS, Watershed Science, San Diego State University, 2016

BA, Geography, San Diego State University, 2014

### Training

AEP Advanced CEQA Workshop, 2018-2022

AEP Legislative Update 2018-2022

AEP Institute, 2018-2019

NEPA Essentials Workshop, 2019

### Affiliations

Association of Environmental Professionals, Vice President of Membership, 2018-2020

American Planning Association, Member

## Professional Experience

Thomas Strand is an Environmental Planner with Chambers with 10 years of experience involving CEQA and NEPA. Thomas' experience involves large- and small-scale project management on CEQA documents and primary author on a number of CEQA and NEPA documents. Thomas has prepared numerous EIRs, ISs, MNDs, and EISs for both public and private clients.

## Project Experience

### Lincoln-Fairhaven Access Trail Addendum, City of Santa Ana, CA

**Project Manager.** Chambers Group was retained by the City to provide CEQA environmental services. Chambers Group provided the City with two options for how to prepare environmental documentation for the project. After the City selected the CEQA Addendum option, Chambers Group prepared a high quality CEQA Addendum to the Second Main Track Project Final EIR that analyzed potential impacts associated with construction of a pedestrian/bicycle pathway. Chambers Group completed the CEQA Environmental Checklist and determined that the proposed project would not result in any new environmental impacts that had not been identified in the Second Main Track Final EIR and would not require a supplemental EIR.

### Brawley Solar Energy Project, Ormat Technologies, Inc., Brawley, Imperial County, CA

**Project Manager.** Thomas is the Project Manager, leading the preparation and submittal of a Conditional Use Permit (CUP) Application through Imperial County to construct, operate, and maintain a 40 Megawatt (MW)/160-Megawatt hour (MWh) photovoltaic solar farm and 80 MW/320 MWh battery energy storage system. The CUP application included a detailed project description and required CUP forms. In support of the project's CEQA document, Thomas is managing and overseeing preparation of a Biological Resources Technical Report, Jurisdictional Delineation Report, Cultural Resources Report, Glare Study, Visual Study, and Transportation Analysis.

### Orni 5 Truckhaven Geothermal Exploratory Wells EA/MND, Ormat Technologies, Inc., Imperial County, CA

**Project Manager.** Chambers Group contracted with Imperial County to prepare an IS/MND for the Orni 5 Truckhaven Geothermal Exploratory Wells Project in accordance with CEQA. Portions of the Project are located on land managed by the U.S. Bureau of Land Management (BLM); therefore, there is a federal nexus for the Project. Chambers Group is also contracted through Ormat Technologies, Inc. to prepare the NEPA document (EA) for the Project.

### CEQA-NEPA Compliance Services for Willey Reservoir Bank Stabilization Project, Imperial Irrigation District, San Diego County, CA

**Project Manager.** Managed the preparation of the IS/MND and associated technical studies for the project; additionally, Chambers Group prepared the 401, 404 permit application and 1602 notification letter. The Project involved the stabilization of 525 linear feet of the embankment separating the New River from Willey Reservoir.



[San Onofre Nuclear Generating Station \(SONGS\) Environmental Management and Compliance during Decommissioning, SCE and SDG&E San Onofre, San Diego County, CA](#)

**Environmental Planner.** SONGS Units 2 and 3 occupy approximately 52.8 acres of SCE's 83.63-acre easement from the U.S. Government. The principal structures consist of two pressurized water reactors with containment structures, turbine buildings, auxiliary buildings, an administrative building, a training building, and cooling system intake and discharge structures. The power block for both units and the site switchyard covers 27.7 acres, with the remaining 25.1 acres for parking, access and miscellaneous structures. In June 2013, SCE submitted a Certification of Permanent Cessation of Power Operations to the Nuclear Regulatory Commission (NRC), certifying that the company has permanently ceased power operations of SONGS Units 2 and 3. The notification triggered SCE to prepare for the decommissioning process as defined by the NRC. As part of the Decommissioning General Contractor environmental team, Thomas has assisted with environmental permitting and compliance strategies, submittals, representation with the Community Engagement Panel, and key CEQA and NEPA related documents.

[EIR, 2009 Water Resources Master Plan \(WRMP\) Update, Otay Water District \(OWD\), San Diego, CA](#)

**Environmental Planner.** Thomas is responsible for the preparation of the environmental document. The Project includes revisions to the OWD 2009 WRMP; updates to planning criteria and OWD's hydraulic system models; maps out water and recycled water facility improvements; updates to OWD's Capital Improvement Program (CIP) projects; and identifies adaptive responses to changed conditions. The 2015 WRMP Update identifies the necessary potable and recycled water CIP facilities, associated probable cost estimates, and develops a phased approach to implement the CIP projects.

[Subsequent EIR, San Diego County General Plan Update, Property Specific Requests, County of San Diego, San Diego, CA](#)

**Environmental Planner.** Responsible for managing the environmental document and authoring the hydrology and water quality, population and housing, public services, recreation, and utilities and service systems sections of the document. The County of San Diego proposes to revise the adopted general plan land use map by redistricting and rezoning 43 Property Specific Requests consisting of private properties and surrounding study areas. The proposed Project also includes the annexation of the former Champagne Gardens Specific Plan Area into the Surrounding Community Planning Areas.

[Big Horn Sheep Mitigation, NEPA Compliance, SDG&E, San Diego, San Diego County, CA](#)

**Environmental Planner.** Thomas is assisting with the preparation of an Environmental Assessment for the invasive species vegetation management in portions of Myer Creek and Devils Canyon Creek to satisfy the PBS mitigation requirements for the Sunrise Powerlink (SRPL) Project. The writing of the EA includes incorporation of technical studies including a Biological Technical Report, an Archaeological Survey Report, and a Historical Resources Compliance Report.



## Paul Morrissey

Biological Services Lead

### Education

MS, Biology, California State University, Dominguez Hills, 2005

BS, Biology, California State University, Dominguez Hills, 2001

### Certifications

USFWS Permit, #TE182550-2, CDFW Scientific Collector's Permit, #SC-008151

Board of Directors, Los Cerritos Wetlands Trust

USACE, Wetland Training Institute, Wetland Delineator Certification

Desert Tortoise Surveying Techniques Workshop, Desert Tortoise Council, qualified desert tortoise biologist

CDFW authorized to take, possess, and transport flat-tailed horned lizards, 2007  
Marvin M. Black Excellence in Partnering Award for the San Gabriel River Project

Southwestern Willow Flycatcher Workshop, Southern Sierra Research Station

Basic Tracking, Earth Skills

Electrofishing and Fish Handling Techniques

### Professional Experience

Paul Morrissey has more than 19 years of experience participating in and conducting terrestrial and aquatic/marine studies. He is an experienced biologist, field manager, and project manager. He has managed several \$20M On-Call contracts including San Diego Gas & Electric (SDG&E) Permitting, Construction, and Restoration), and between \$8M and \$24M On-Call contracts for LACPW (Flood Maintenance Division, Water Resources, Permitting). He has coordinated with state and federal agencies to develop and implement effective mitigation and monitoring plans for listed and sensitive species and to ensure compliance with state and federal laws. Working on and managing complex linear projects such as the Pacific Gas and Electric (PG&E), Southern California Edison (SCE), and SDG&E power transmission line projects has made him familiar with the sensitive resources and the regulatory agencies that cover Orange, Los Angeles, Ventura, Riverside, San Diego, San Bernardino, and Imperial counties.

He has conducted hundreds of jurisdictional water and wetland delineations pursuant to Section 404 of the Clean Water Act (CWA) and riparian delineations pursuant to Section 1601/1603 of the CDFW Code. He has also prepared jurisdictional delineation reports and prepared permit applications for the USACE, CDFW, and RWQCB. He has performed agency consultations, authored Biological Assessments, prepared CDFW and Bureau of Land Management (BLM)/USFWS permits for state and federal-listed species, and developed habitat mitigation monitoring plans and restoration plans for associated impacts. He has consulted with USFWS, USACE and Tribes during federal Endangered Species Act (FESA) Section 7 for endangered species issues and negotiated FESA Section 10 conservation permitting, as well as consulting with CDFW for California Endangered Species Act (CESA) Section 2081 permits.

### Project Experience

[Atwell Development Project Phases 3-8, Tri Pointe Homes, Banning, Riverside County, CA](#)

**Biological Services Lead.** The Atwell Development Project area covers 1,523 acres owned by Tri Pointe Homes (formerly Pardee Homes). The project proposes the development of eight phases over an estimated 30-year implementation period. The project's phased construction approach will include residential homes, parks, open space, and commercial use areas.

[Woodcrest-Rinehart Acres Drainage Project, Riverside County Flood Control District, CA](#)

**Biological Services Lead.** The Woodcrest-Rinehart Acres Drainage Project consists of placing a series of 100-year storm drain facilities ranging in diameter from 24-60 inches (in.), placement of a water quality/extended detention basin, and street improvements. The street improvements consist of the paving of Granite Avenue and Boulder Avenue from their intersection with Taft Street to the west to



their intersection with Wood Road to the east. Additionally, Dallas Avenue will be paved from its intersection with Taft Street to the west and continuing east until the entry point of the Woodcrest-Rinehart Acres Basin about 650 Linear Feet east of Wood Road. The street improvements for these paved roads also include 4-6-in. AC berm. Chambers Group was retained to conduct a Jurisdictional and Wetland Delineation, a Biological Reconnaissance Survey and Technical Report, and an MSHCP Consistency Analysis.

**Implementation of the Master Mitigation Plan (MMP) for the Big Tujunga Wash Mitigation Bank Site, Los Angeles County Public Works, CA**

**Program Manager.** The Big Tujunga Wash Mitigation Area is owned and managed by the County to offset impacts to habitats and vegetation communities at other Public Works-owned facilities. Chambers Group prepared the original MMP for the Mitigation Bank in 1999 and conducted functional analysis surveys and exotic species removal. Paul manages the restoration and preservation of more than 200 acres of upland and riparian scrub habitat. He also manages the annual brown-headed cowbird trapping program and exotic species removal. From 2019 to 2023, the exotic plant eradication and maintenance crew no longer applied herbicide due to the April 2019 ban, and mechanically removed exotic plant species (e.g., giant reed, tamarisk, castor bean, tocalote, and numerous other weedy species) on a monthly basis utilizing an adaptive management plan and Department of Parks and Recreation and integrated pest management (DPR-IPM) programs integrating weed control methods and include the use mechanical means. For 2024, a combination of herbicide and mechanical means will be implemented based on conditions observed in the field. He coordinates the exotic wildlife removal in the creek and associated Tujunga ponds to enhance habitat for the federally listed Santa Ana sucker. In addition, he coordinates the water quality monitoring, trails monitoring and maintenance, and the public outreach program.

**Orange County Fire Authority (OCFA) Biological and Archaeological Services for Invasive Shot Hole Borer (ISHB) and Gold Spotted Oak Borer (GSOB), Orange County, CA**

**Project Manager.** Paul is managing the OCFA project to help with the exotic pest issues affecting trees in Orange County. Approximately 163,992 acres throughout the County are experiencing high tree mortality due to recent severe drought conditions and tree pests. The GSOB and ISHB are weakening and killing native hardwood and ornamental species in the southern California wildland and urban landscapes. The OCFA, under the CAL FIRE Prevention Grant Program, proposes to treat infested trees located on both County- and privately-owned properties with a contact insecticide to prevent the spread of resident beetles to neighboring trees and re-infestation of current host trees. Chambers Group prepared an IS for each Project area and due to the restorative nature of the work (removing diseased trees and reducing fire fuels), Chambers Group determined that the OCFA projects will not have a significant effect on the environment and are exempt from additional environmental review under CEQA. He is coordinating pre-maintenance surveys including nesting bird surveys for CDFW and Migratory Bird Treaty Act (MBTA) compliance prior to clearance of diseased trees.

**On-Call Environmental Services, OCPW, Orange County, CA**

**Principal Biologist.** Paul provides oversight in Chambers Group coordination with OCPW regarding regulatory permits, including coastal permits, biological resource surveys for sensitive species/habitat, protocol-level surveys, environmental documentation, jurisdictional delineations of waters and wetlands, and construction monitoring in support of regulatory permits in Orange County.



**Jackelyn Mayfield**  
Biologist/Botanist

**Education**

BS, Environmental Biology,  
California State University,  
Northridge

AS, Biological and Physical  
Science, College of the  
Canyons

**Training**

Introduction to Desert  
Tortoises and Field  
Techniques, Desert Tortoise  
Council, 2016

Five Fundamentals for  
Successful Restoration of  
Disturbed Lands, S&S Seeds  
and Profile, 2016

Certified Erosion and Sediment  
Control Lead (CESCL) in  
Washington and Oregon, May  
2020 – renewed May 2023

Using the Revised Washington  
State Wetland Rating System  
(2014) in Western Washington,  
March 2021

Grass, Sedge, and Rush  
Identification for Western WA  
Puget Lowland Habitats, March  
2023

**Affiliations**

Washington Native Plant  
Society

Native Plant Society of Oregon

**Volunteer Work**

Certified Docent-Naturalist at  
Placerita Canyon State Park,  
Newhall, California.

Volunteered in the ecology lab  
of Dr. Paul Wilson cataloging  
mosses of Sequoia National  
Park.

Participates in the LACPW Big  
Tujunga Wash Mitigation Area  
annual community clean-up  
day.

**Professional Experience**

Jackie Mayfield is a biologist with 10 years of environmental consulting experience and has provided support for projects in energy (wind, solar, gas), public works, transportation, telecommunications, development, restoration, water resources, and mining sectors. Her experience includes biological monitoring, restoration monitoring, construction monitoring, environmental monitoring and compliance, wetland, and jurisdictional delineation (California and Washington state), conducting habitat assessments, erosion and sediment control, botanical and wildlife surveys (birds, reptiles, mammals) and focused surveys for special status plant and wildlife species including desert tortoise, burrowing owl. Jackie possesses a diverse skillset combining knowledge of ecology, conservation, wildlife, botany, vegetation restoration, plant identification, vegetation mapping, environmental compliance, field support, data collection and analysis, data management, research, technical report writing and QA/QC, and project management. She is the Assistant Lead Environmental Manager for AT&T construction projects, and assists with the management of other large-scale, and high-profile projects to help produce quality and on-time deliverables. Jackie is a Certified Erosion and Sediment Control Lead in Washington and Oregon State and is versed in using the Washington State Wetland Rating System (2014).

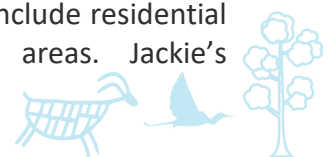
**Project Experience**

**City of Beaumont On-Call for Environmental Services, Task Order Xenia Residential Project CEQA Peer Review, City of Beaumont, Riverside County, CA**

**Biologist.** Chambers Group conducted a peer review of the Xenia Residential Project Draft Initial Study/Mitigated Negative Declaration and corresponding technical appendices on behalf of the City of Beaumont. The proposed project consists of constructing 16 apartment buildings, totaling 192 multi-family residential dwelling units, on approximately 10.93 acres. Jackie conducted a literature review and reviewed the Biological Technical Report, the Riverside County Multiple Species Habitat Conservation Plan (MSHCP) Consistency Analysis Report, and the biological resource sections of the Initial Study/Mitigated Negative Declaration.

**Atwell Development Project Phases 3-8, Tri Pointe Homes, Banning, Riverside County, CA**

**Project Manager.** The Atwell Development Project area covers 1,523 acres owned by Tri Pointe Homes (formerly Pardee Homes). The project proposes the development of 8 phases over an estimated 30-year implementation period. The project's phased construction approach will include residential homes, parks, open space, and commercial use areas. Jackie's





responsibilities as project Manager include planning and coordinating the field visits and biological surveys with the client, scheduling field staff, and overseeing the production and timely delivery of reports. In addition, Jackie prepared a Burrowing Owl Mitigation and Monitoring Plan for the project in accordance with the Streambed Alteration Agreement as burrowing owls are known to occur on site (two active burrowing owl burrows were monitored during the 2022 breeding season), and the plan was approved after successful coordination with CDFW and Western Riverside County Regional Conservation Authority. Jackie successfully coordinated with Tri Pointe Homes to modify the construction schedule for project activities planned to occur adjacent to burrowing owl avoidance buffers to protect the species. Jackie assists the client with navigating biological aspects of the project, conducts research, and provides supporting biological documentation as needed to help meet project timelines and goals.

#### **Tournament Hills Development Project, Tri Pointe Homes, Beaumont, Riverside County, CA**

**Project Manager.** The Tournament Hills Development Project proposed to construct a residential community (58.3 acres) and open space (8.2 acres) as part of the Oak Valley SCPGA Specific Plan. Jackie's responsibilities as Project Manager included planning and coordinating the field visits and biological surveys with the client, scheduling field staff, and overseeing the production and timely delivery of reports. Jackie assisted the client with navigating biological aspects of the project, and provided supporting biological documentation as needed to help meet project timelines and goals.

#### **Redding NW Habitat Assessment, Cross Development, Centerville, Shasta County, CA**

**Biologist/Botanist.** Jackie served as project manager and conducted a habitat assessment to document current site conditions, vegetation communities, wildlife, and hydrology present on the approximately 2-acre site prior to the construction of the proposed 9,100 square-foot Dollar General store. Jackie prepared a habitat assessment report and recommended additional focused surveys and a tree inventory (blue oak woodland habitat was present on site) prior to the start of construction to keep the client in compliance with lead agency requirements.

#### **Redding NW Tree Inventory, Cross Development, Centerville, Shasta County, CA**

**Biologist/Botanist.** Jackie served as project manager and conducted a tree inventory to document all native trees located within project impact areas prior to the start of construction. Tree data collected included tree species, diameter at breast height (DBH), height, crown length and width, and signs of damage or disease. Health scores were provided for each tree as an overall estimate of its ecological value. A tree inventory report was provided to the client to aid in agency negotiations and compliance.

#### **Bella Vista DG Wetland Delineation, Cross Development, Bella Vista, Shasta County, CA**

**Biologist/Waters Delineator.** Jackie served as project manager and conducted a wetland delineation on the approximately 2-acre project site prior to the construction of the proposed 9,100 square foot Dollar General store. A wetland and several drainages were identified onsite, and Jackie worked closely with the client to modify the project footprint and design in order to avoid hydrologic features as much as feasible. Avoiding the wetland and other hydrologic features saved client potentially thousands of dollars in mitigation and permitting costs.



## Heather Madera

Wildlife/10a Permit USFWS

### Education

MS, Biology, California State University, Fullerton, 2010

BS, Wildlife Biology Colorado State University, Fort Collins, CO, 2006

### Certifications/Training

USFWS Recovery Permit, Coastal California Gnatcatcher

California Rapid Assessment Method (CRAM) Training

San Diego Sensitive Butterflies Workshop

Biology and Management of the California Red-Legged Frog Workshop

Sea and Sage Audubon Introduction to Birding by Sound Workshop

Desert Tortoise Introduction to Surveying, Monitoring, and Handling Techniques Workshop

### Professional Experience

Heather Franklin's diverse background in wildlife biology includes 15 years of experience in a variety of habitats including coastal sage scrub, desert, marine, and riparian. Heather holds a USFWS Section 10(a)(1)(A) recovery permit to survey for coastal California gnatcatcher. She has followed survey protocols to perform vegetation and wildlife inventories and functional analysis surveys. She is knowledgeable in the field of identification of avian species, small mammals, and fish. Her strengths include conducting focused protocol-level surveys, regulatory compliance, jurisdictional and wetland delineations, reconnaissance-level biological surveys, preconstruction surveys, and construction mitigation monitoring for federal- and state-listed species and California special-concern species (e.g., coast range newt, burrowing owl, Mohave ground squirrel).

### Project Experience

#### Woodcrest-Rinehart Acres Drainage Project, Riverside County Flood Control District, CA

**Project Manager.** The Woodcrest-Rinehart Acres Drainage Project consists of placing a series of 100-year storm drain facilities ranging in diameter from 24-60 inches (in.), placement of a water quality/extended detention basin, and street improvements. The street improvements consist of the paving of Granite Avenue and Boulder Avenue from their intersection with Taft Street

to the west to their intersection with Wood Road to the east. Additionally, Dallas Avenue will be paved from its intersection with Taft Street to the west and continuing east until the entry point of the Woodcrest-Rinehart Acres Basin about 650 Linear Feet east of Wood Road. The street improvements for these paved roads also include 4-6-in. AC berm. Chambers Group was retained to conduct a Jurisdictional and Wetland Delineation, a Biological Reconnaissance Survey and Technical Report, and an MSHCP Consistency Analysis.

#### 198 Debris Basin Monitoring Project, Pre- and Post-Construction Surveys, Biological Monitoring, and Water Quality Sampling, FMD, Los Angeles County, CA

**Project Manager.** Heather managed a \$246,000/year contract since 2016 for pre- and post-construction surveys, nesting bird surveys, biological monitoring, and as needed water quality sampling for 198 debris basins maintained by the LACFCD FMD throughout portions of Los Angeles County, California. The surveys and monitoring were required under permits from the USACE and RWQCB for maintenance activities including mowing/trimming of vegetation and potential sediment removal within the debris basins. Heather oversees permit compliance, conducts field surveys and water quality testing, as well as supported all technical efforts and field activities by coordinating and developing maintenance schedules for various debris basins and provided logistical support to staff in the field. Heather also manages and provides oversight for the preparation of pre- and post-maintenance summary reports and oversaw aspects of project and contract management including budget management, scheduling, quality control, and coordination of internal field staff.



**Sierra Highway Widening Project, Training and Surveys, LACPW, Palmdale, Los Angeles County, CA**

**Lead Biologist.** Heather assigned biologists with crews daily, communicated with foreman and engineers throughout the week, and fielded questions from the engineers. She performed environmental awareness training for new crew members. She also conducted preconstruction burrowing owl surveys, performed nesting bird surveys, and monitored nesting birds during construction activities to verify compliance with the MBTA.

**Biological and Archaeological Survey Services for a Hazardous Tree Removal Project, Orange County, CA**

**Biologist.** Approximately 163,992 acres throughout Orange County are experiencing high tree mortality due to recent severe drought conditions and tree pests. The GSOB and ISHB are weakening and killing native hardwood and ornamental species in the southern California wildland and urban landscapes. The California Board of Forestry and Fire Protection has declared some areas in the County as Zones of Infestation (ZOI) for the GSOB and ISHB. The Orange County Fire Authority (OCFA), under the CAL FIRE Fire Prevention Grant Program, proposes to treat infested trees located on various County- and privately-owned properties with a contact insecticide to prevent the spread of resident beetles to neighboring trees and re-infestation of current host trees. Chambers Group works with CAL FIRE staff to determine if there would be a significant effect on the environment, specifically biological resources, cultural/paleo/tribal resources, and wildfire and whether the proposed activities would impair the emergency response/evacuation plans.

**Dana Point Headlands Project in the City of Dana Point, Orange County, CA**

**Biologist.** Chambers Group provides the City of Dana Point with rare plant surveys in accordance with California Native Plant Society and CDFW guidelines, exotic vegetation mapping, and assessment of vegetative cover for the Hilltop, Harbor Point, and South Strand Parks located in the City of Dana Point, California. The Data gathered from the survey and analysis will be included by the City of Dana Point in the Habitat Management and Monitoring Plan. In addition, the firm manages additional surveys and monitoring of the Conservation Parks over a 3-year period, including the federally threatened coastal California gnatcatcher and the federally endangered Pacific pocket mouse (*Perognathus longimembris pacificus*).

**On-Call Biological Monitoring Services, Sanitation Districts of Los Angeles County, Los Angeles County, CA**

**Project Manager.** Heather currently works as the project manager for the Sanitation Districts of Los Angeles County's On-Call in charge of budgets, scheduling, and report review for a variety of projects throughout Los Angeles County. Her responsibilities also involved conference calls and answering questions or concerns prior to and following fieldwork. Heather's duties included environmental awareness trainings for multiple sensitive and listed species, biological assessments, jurisdictional waters and wetland delineations, American badger and burrowing owl surveys and reporting, coastal California gnatcatcher surveys and reporting, and nesting bird surveys and reporting. She coordinates staff, tracking progress and milestones, and tracking project budget and invoicing.



## Lisa Louie

Regulatory Permitting

### Education

MS, Marine Science,  
University of San Diego, 2005

BS, General Biology, University  
of California, San Diego, 1999

### Training

California Rapid Assessment  
Method (CRAM) – Southern  
California Research Project  
(May 2009)

Wetland Delineation –  
Wetland Training Institute  
(August 2007)

Wetland Riverine Functional  
Assessment/Ecology for  
Project Managers – USACE

Environmental Considerations  
in Planning – USACE

Hydrologic & Hydraulic  
Considerations in Planning –  
USACE

Planning (Principles and  
Procedures) Workshop –  
USACE

Environmental Impact  
Assessment – USACE

Public Involvement and  
Teaming in Planning – USACE

Planning (Civil Works)  
Orientation Workshop –  
USACE

Introduction to Planning –  
USACE

Plan Formulation Workshop –  
USACE

## Professional Experience

Lisa Louie is a Senior Project Manager with more than 23 years of experience in marine, estuarine, and freshwater environmental management. She has prepared or supported in the preparation of multiple NEPA and CEQA documents. Her experience includes both NEPA and CEQA documents: EIS/EIR, EA, IS, and ND, Categorical Exemptions and Exclusions (CatEx) as well as integrated NEPA/CEQA documents. Lisa also has coordinated with state and federal resource agencies, including the successful negotiation of mitigation and conservation requirements.

In addition, Lisa has coordinated and managed mitigation and monitoring plans as well as permit applications that include CWA Section 404 (individual and nationwide) permits and 404(b)(1) evaluations for USACE, CWA Section 401 water quality certifications for the RWQCB, Section 1600 streambed alteration agreement applications for the CDFW, coastal development permits and consistency determinations for the California Coastal Commission (CCC), and essential fish habitat (EFH) for the National Oceanic and Atmospheric Administration National Marine Fisheries Service (NOAA Fisheries).

## Project Experience

### Woodcrest-Rinehart Acres Drainage Project, Riverside County Flood Control District, CA

**Regulatory Permitting Specialist.** The Woodcrest-Rinehart Acres Drainage Project consists of placing a series of 100-year storm drain facilities ranging in diameter from 24-60 inches (in.), placement of a water quality/extended detention basin, and street improvements. The street improvements consist of the paving of Granite Avenue and Boulder Avenue from their intersection with Taft Street to the west to their intersection with Wood Road to the east. Additionally, Dallas Avenue will be paved from its intersection with Taft Street to the west and continuing east until the entry point of the Woodcrest-Rinehart Acres Basin about 650 Linear Feet east of Wood Road. The street improvements for these paved roads also include 4-6-in. AC berm. Chambers Group was retained to conduct a Jurisdictional and Wetland Delineation, a Biological Reconnaissance Survey and Technical Report, and an MSHCP Consistency Analysis.

### I-405 Sepulveda Pass Widening, Permit Compliance, Kiewit, Los Angeles County, CA

**Senior Regulatory Specialist.** Lisa prepared the regulatory permit amendments to the CWA Section 401 and 404 permits and Section 1602 Streambed Alteration Agreement for the I-405 Sepulveda Pass Widening Project. The permit amendments included a review of the jurisdictional delineation and coordination with USACE and CDFW for specific questions regarding jurisdiction and impacts.



[Sepulveda Boulevard over Dominguez Channel Project, Permitting, City of Carson & Caltrans, RKA Group, Carson, Los Angeles County, CA](#)

**Regulatory Permitting Specialist.** Lisa prepared the application packages for the Section 404 nationwide permit for USACE, Section 401 water quality certification for RWQCB, and Section 1602 Streambed Alteration Agreement for CDFW. The project involves widening the Sepulveda Blvd. bridge over the Dominguez Channel by adding a median and sidewalks on both sides of the bridge to improve road safety and reduce traffic congestion by allowing for better traffic circulation.

[On-Call Environmental Services, OCPW, Orange County, CA](#)

**Senior Project Manager/Biologist/Permitting Specialist.** Lisa was responsible for coordination with OCPW regarding regulatory permits, including coastal permits, biological resource surveys for sensitive species/habitat, protocol-level surveys, environmental documentation, jurisdictional delineations of waters and wetlands, and construction monitoring in support of regulatory permits in Orange County.

[Sea Summit at Marblehead Preserve and Coastal Development Project, San Clemente, CA](#)

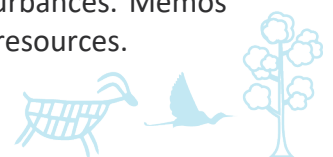
**Regulatory Permitting Specialist.** Lisa is assisting with the coordination with the resource agencies including California State Parks, to progress the site toward achievement of the required success criteria for the site and to meet the conditions of the IS/MND. Due to changing conditions at the site since the original construction, Lisa is working to help clarify what has been accomplished, as originally recommended in the MMP as well as the changes and post-construction modifications to mitigation. Lisa also prepared the LSAA for the long-term infrastructure maintenance and management within the Conservation Areas associated with the Sea Summit at Marblehead residential development and the Plaza San Clemente commercial development, specifically the in-perpetuity maintenance responsibilities of three water quality and detention basins within the approximately 100-acre habitat restoration area (Conservation Area).

[Newport Boulevard/32nd Street Intersection Improvement, IS/MND, City of Newport Beach, sub to VA Consulting, Newport Beach, CA](#)

**Senior Project Manager, Regulatory Specialist.** Lisa provided review support of the IS/MND for the improvement of the intersection of Newport Boulevard and 32nd Street in order to increase vehicular capacity and reduce existing traffic congestion to an acceptable level of service. The proposed project would add additional northbound and southbound through lanes along Newport Boulevard, introduce 6-foot-wide bike lanes along both sides of Newport Boulevard, and introduce a public parking lot on the west side of Newport Boulevard between 32nd Street and Finley Avenue. Lisa assisted with the preparation of a coastal development permit for the CCC. The coastal permit demonstrated that the project would not disrupt coastal access or impact coastal resources.

[Angeles Forest Highway and Big Tujunga Road Compliance Monitoring, LACPW, CA](#)

**Project Manager.** Lisa coordinated with LACPW and managed the biological and cultural/archaeological monitors for the Project within the Angeles National Forest. The project involved monitoring removal of sediment from culverts and basins at several locations along Angeles Forest Highway and Big Tujunga Road due to sediment accumulation from recent storms. Construction monitors observed project activities to document permit compliance with avoidance and minimization measures from the USFW and U.S. USFS. Biologists had to meet the requirements for handling and/or relocating arroyo toad and/or any sensitive plant. Lisa assigned the appropriate level biologist and cultural monitor based on location and potential resources to conduct clearance surveys prior to ground disturbances. Memos were provided on a daily basis for biological resources and a weekly basis for cultural resources.



## Lucas Tutschulte

Cultural Resources Director

### Education

BS, Anthropology emphasis in  
Archaeology; University of  
Kansas, 2006 Minor -  
Geography emphasis in  
Cultural Geography

Huaca de la Luna y Sol Project,  
Field School Program, 2005;  
Pontificia Universidad  
Catolica, Trujillo, Peru

### Training

GIS Software: Working  
applicable knowledge of ESRI  
ArcMap

GPS Hardware: Highly fluent  
with Trimble HT/XT, and Yuma  
models using TerraSync,  
ArcPad, and ESRI software.  
Various Garmin handheld  
model

### Affiliations

Society for American  
Archaeology

Society for California  
Archaeology

Association of Environmental  
Professionals

## Professional Experience

Lucas Tutschulte has 16 years of cultural resource management experience including prehistoric and historic period archeological sites. Lucas has extensive experience leading archaeological field surveys, conducting cultural resources literature searches, historic/archival research, Native American coordination, site recordation and mapping, and construction monitoring. He has experience creating and implementing archaeological resource treatment plans; and is familiar with both laboratory, field testing and data recovery procedures throughout North America with the majority of experience within California. Lucas meets the Secretary of the Interior Professional Qualifications Standards for History. He maintains an understanding of relevant regulations and ordinances that affect cultural resources and historic properties. He has applied his understanding to a breadth of impacts assessments and determinations of eligibility across a range of administrative levels including local, state, and National Register of Historic Places (NRHP). Additionally, he has performed and directed cultural and historic resource investigations under Section 106 and 110 of the National Historic Preservation Act (NHPA), NEPA, CEQA, and the Secretary of Interior Standards for the Treatment of Historic Properties. Among the agencies served by Lucas are the Bureau of Indian Affairs (BIA), Department of Defense (DOD), BLM, National Park Service (NPS), California Energy Commission (CEC), Federal Communications Commission (FCC), Caltrans, California Public Utilities Commission (CPUC), and the State Historic Preservation Offices of several different states throughout North America.

### Woodcrest-Rinehart Acres Drainage Project, Riverside County Flood

#### Control District, CA

**Cultural Resources Lead.** The Woodcrest-Rinehart Acres Drainage Project consists of placing a series of 100-year storm drain facilities ranging in diameter from 24-60 inches (in.), placement of a water quality/extended detention basin, and street improvements. The street improvements consist of the paving of Granite Avenue and Boulder Avenue from their intersection with Taft Street to the west to their intersection with Wood Road to the east. Additionally, Dallas Avenue will be paved from its intersection with Taft Street to the west and continuing east until the entry point of the Woodcrest-Rinehart Acres Basin about 650 Linear Feet east of Wood Road. The street improvements for these paved roads also include 4-6-in. AC berm. Chambers Group was retained to conduct a Jurisdictional and Wetland Delineation, a Biological Reconnaissance Survey and Technical Report, and an MSHCP Consistency Analysis.

### North Norco Channel Line NB, Riverside County Flood Control District, Riverside County, CA

**Cultural Resources Lead.** The District proposed to replace approximately 1,800 lineal feet of existing earthen channel with an open concrete trapezoidal and rectangular channel with base width and height ranging from 6' - 11' and 5' - 7', respectively. The primary objective is to provide 100-year flood



protection to the community near the channel between Valley View Avenue and Sierra Avenue by collecting 100-year flows from the existing improved portion of Line NB upstream of Valley View Avenue and conveying them westerly in an upgraded channel until they are discharged into the existing North Norco Channel just east interstate 15. Chambers Group provides archaeological and paleontological monitoring of the sediment removal area. The Project area falls within a High A paleo area. Chambers Group is working with the District and the Soboba Tribe to provide full-time Paleontological monitor on-site that is also familiar with cultural resources.

**Monroe Storm Drain Stage 4 Project, Architectural History Survey and Assessment, Riverside County Flood Control and Water Conservation District, Riverside County, CA**

**Assistant Architectural Historian. Architectural History Field Technician.** Lucas tasks included, but were not limited to, initial historic significance assessment, photo documentation and associated paperwork documenting the current state of the existing Monroe Storm Drain. Additionally, Lucas processed, organized, and prepared the field data for inclusion in the report. As well as acting as co-author of the associated historical resources report, submitted to Riverside County Flood Control and Water Conservation District.

**City of San Diego O&M Master Storm Water System Maintenance Program, San Diego, CA**

**Assistant Water Resources Field technician.** Lucas assisted the field data gathering portion of the water resources ongoing Master Program. The Master Program was designed to provide detailed methods for maintaining open flood control facilities (channels). Lucas observed and documented storm water run-off data during specific storm events.

**Collier Park Archaeological Testing Project, La Mesa, San Diego County, CA**

**Field Director.** Lucas served as the Field director for the systematic subsurface testing conducted for the City of La Mesas' Collier Park Historic District. The project actions included the design and implementation of a subsurface testing plan to determine the nature of subsurface deposits encountered in earlier studies of the Historic District.

**Orange County Fire Authority Station 10 Project, Yorba Linda, Orange County, CA**

**Associate Historian.** Lucas conducted background historical research and provided an assessment of the history and physical integrity of the subject property. He conducted the intensive field survey of the existing Fire Station 10, capturing photo documentation and recording findings with the appropriate DPR523 Series forms. Lucas performed an evaluation of the resource in accordance with Section 15064.5(a)(2)-(3) of CEQA. Additionally, he compiled the associated historical resources report, submitted to Orange County Fire Authority.

**Temecula Public Library Parking Lot Expansion Project, Temecula, Riverside County, CA**

**Cultural Resources Specialist.** Lucas conducted cultural resources management tasks related to the parking lot expansion project. As the scope of work for the project proposed expansion into a previously undisturbed portion of the adjacent property, tasks included background research, an archival records search, a field survey, and a technical report to document the findings. This study was done quickly but thoroughly, allowing the project to move forward with the appropriate CEQA-level analysis.



**Richard Shultz, MA, RPA**

Principal Investigator

**Education**

MA, Cultural Resources Management, Sonoma State University

BA, Anthropology, San Diego State University

**Registrations**

Register of Professional Archaeologist, 15841

**Affiliations**

Society for California Archaeology

**Training**

OSHA 10-Hour Training Course in Construction Safety and Health

OSHA 40-Hour HAZWOPER

Unexploded Ordnance Safety Training for Archaeological Survey and Excavation Programs, MCAGCC 29 Palms, MCB Camp

**Professional Summary**

Richard Shultz is a Secretary of the Interior Qualified historic and prehistoric archaeologist, with an interest in architecture and architectural history. He maintains a Caltrans PQS Equivalent certification as Principal Investigator in Prehistoric Archaeology and Principal Architectural Historian. As a Principal Investigator and Senior Archaeologist, he has over 30 years of practical experience. Richard's experience emphasizes California planning, CEQA NEPA, the NHPA, and associated orders and legislation. He has documented and evaluated historical resources for local, state, and federal jurisdictions, leading to both local and federal agencies, the State Historic Preservation Office (SHPO), concurrence with several evaluations and recommendations for various buildings, sites, and objects. Richard has experience with the BLM Bureau of Reclamation for projects associated with Western Area Power Administration and Sempra Energy, RWQCB and various national telecommunications companies, as well as for Federal Energy Regulatory Commission, U.S. Customs and Border Patrol, Department of Homeland Security, USACE, and the FAA.

**Project Experience**

**Woodcrest-Reinhart Acres Drainage Plan, Riverside County Flood Control & Water Conservation District, Riverside, CA**

**Principal Investigator.** Richard performed a cultural resources assessment services for the Woodcrest-Reinhart Acres drainage plan project. Chambers Group provided environmental and regulatory support services to the Riverside County Flood Control & Water Conservation District. Richard requested the necessary records search data and conducted an initial

desktop review of residential properties using assessor's parcel number data from Riverside County to identify age-appropriate built environment features in assessing potential adverse effects to historical cultural resources. Richard conducted field survey for surficial and potentially buried cultural resources and field evaluated the previously identified potentially eligible built environment resources. Richard documented all findings and field-evaluated resources in a report to the District as part of the overall CEQA document package.

**North Norco Channel Line NB, Riverside County Flood Control District, Riverside County, CA**

**Principal Investigator.** The District proposed to replace approximately 1,800 lineal feet of existing earthen channel with an open concrete trapezoidal and rectangular channel with base width and height ranging from 6' - 11' and 5' - 7', respectively. The primary objective is to provide 100-year flood protection to the community near the channel between Valley View Avenue and Sierra Avenue by collecting 100-year flows from the existing improved portion of Line NB upstream of Valley View Avenue and conveying them westerly in an upgraded channel until they are discharged into the existing North Norco Channel just east interstate 15. Chambers Group provides archaeological and paleontological monitoring of the sediment removal area.





**Vidal Energy Project, Core Development Group LLC, San Diego, CA**

**Principal Investigator / Field Director.** Richard performed survey and evaluative services for the Vidal battery storage and solar project. Directed field crew in identifying and recording complex cultural resource deposit, illustrating methodological approaches to expedite recordings while maintaining efficiencies necessary for cost-limited projects. Chambers Group performed cultural resources inventory survey and evaluation recommendation to the project client. Richard authored the draft findings report, and over 50 cultural resource site forms. Unique challenges on this project included contextualizing historical land use following decades of subsequent disturbance by various public and private off-highway activities.

**Valley Center Battery Storage, Terra-Gen Power, San Diego, CA**

**Principal Investigator / Field Director.** Richard performed management and field direction for Phase II testing of four loci of an archaeological deposit in Valley Center, California. Chambers Group performed survey and testing (Phase I and II) for a proposed battery storage facility that will augment power supply, and tie into, SDG&E power service. Richard coordinated monitoring staff and Native American Monitors for daily monitoring operations and provided on-site analysis and direction when issues were encountered. Richard coordinated with Tribal Historic Preservation Officer on all issues encountered during fieldwork. Unique challenges on this project included adapting to rapid changes in schedule, project design and footprint, and developing a testing program satisfying County of San Diego requirements and Native American consultation requests.

**Desert Hot Springs I09 Industrial Park, City of Desert Hot Springs, Riverside County, CA**

**Cultural Resources Specialist.** Richard performed project management, CEQA peer review, and consultation and coordination services to the City of Desert Hot Springs for the proposed development project. Chambers Group performed CEQA Initial Studies for a proposed Mitigated Negative Declaration. Unique challenges on this project included coordinating with interested parties during Covid-19 shut down and precautions, while successfully concluding AB 52 consultation between requesting tribal governments and the City of Desert Hot Springs.

**Desert Hot Springs Dreamfields, City of Desert Hot Springs, Riverside County, CA**

**Cultural Resources Specialist.** Richard performed project management, CEQA peer review, and consultation and coordination services to the City of Desert Hot Springs for the proposed development project. Chambers Group performed CEQA Initial Studies for a proposed Mitigated Negative Declaration. Unique challenges on this project included coordinating with interested parties during Covid-19 shut down and precautions, while successfully concluding AB 52 consultation between requesting tribal governments and the City of Desert Hot Springs.

**General Plan Update EIR, City of Beaumont, Riverside County, CA**

**Cultural Resources Specialist.** Richard performed CEQA peer review on the proposed City of Beaumont General Plan. Chambers Group performed CEQA review and comment for a proposed General Plan.



## Jeremy Louden

Air Quality, Noise, Greenhouse Gas | LDN Consulting, Inc.

### Education

B.S. Civil Engineering, San Diego State University

A.A. General Education, Palomar Community College

### Registrations

Engineer-In-Training (EIT)  
#114983

### Affiliations

American Society of Civil Engineers (ASCE)

Institute of Noise Control Engineers (INCE)

Association of Environmental Professionals (AEP)

San Diego Chapter of the Building Industry Association (BIA)

Approved County of San Diego CEQA Consultant for Acoustics and Air Quality

American Planning Association (APA)

## Professional Experience

Jeremy Louden has been involved in the field of civil engineering since 1999 specializing in acoustical, energy, air quality analysis including greenhouse gas assessments. During his career, Jeremy has applied both his breadth of expertise and experience in numerous projects and has worked on projects for public agencies such as the San Diego County Water Authority, Imperial Irrigation District, Caltrans, Cities and Counties throughout Southern California.

Jeremy has been involved in various projects involving potential impacts due to aircraft, highway, stationary sources, and construction activities on humans as well as habitat and the environment. He has conducted acoustical and air quality along with greenhouse gas assessments and has written compliance assessments related to all types of construction, operations, and transportation activities. Working with both public agencies and private developments throughout the CEQA and NEPA process.

In addition, Jeremy continues as an active participant of the San Diego County Noise Professionals working groups that are collaborating to establish guidance and thresholds on the new County Noise Ordinance, Guidelines and Element of the General Plan Update. Jeremy also participates on the Technical Review Committee (TRC) for the County of San Diego's Guidelines for Determining Significance for Climate Change.

## Project Experience

Recent Projects include:

- Harmony Grove Village Treatment Facility – Escondido
- PB Pipeline Replacement – San Diego
- Miramar Clearwell – San Diego
- Carlsbad FCF Valve Replacement – San Marcos
- San Luis Rey Pipeline Replacement – Bonsall
- Olivenhain Waste Water Treatment Plant – San Diego
- Beeler and Central Shaft Pipeline Noise Monitoring – San Diego
- Brine Pipeline Replacement El Norte – San Diego
- Montecito Ranch Water Treatment – Ramona
- Lilac Ranch Sewer Treatment Facility – Valley Center
- Otay Pump Station – Otay Mesa CA
- El Camino Real Roadway – San Diego
- Barrio Login Nighttime Noise Assessment
- San Diego Yacht Center
- San Diego Oceanfront Fireworks
- Wounded Warriors Project



**Professional Environmental Consulting  
Services for Cherry Channel Drainage Project**

City of Beaumont



**California Ethanol and Power Project**

The Proposed Project is located in the community of Niland in the northern portion of the County of Imperial. The proposed 17.5 megawatt (MW) Renewable Energy Power Plant will be located on an approximately 123-acre parcel located at the intersection of the English Road and Winslow Road in the County of Imperial.

**Imperial Irrigation District Facility**

The Project is currently to develop a new IID Administration Facility on a portion of the site to house 550 to 600 existing employees currently located at various offices in the area. Future development would consist of a commercial center, recreational area and potentially a civic center. The Project is located at the intersection of Barioni Boulevard and Cross Street in the City of Imperial.

**McCabe Ranch**

The Project would create 2,268 new residential units as well as commercial and recreational areas within an approximately 468-acre area. The planning area would include a mix of land uses, including residential, schools, commercial, and recreational uses. The Project site is located south of McCabe Road, west of Dogwood Road and east of State Route 86 in the County of Imperial.

**Centinela Solar Energy Project**

The Proposed Project is located in the community of Ocotillo in the western portion of the County of Imperial. The project consists of a fixed-tilt, ground mounted photovoltaic solar plant capable of producing over 250 megawatts of electricity located on over 2,000-acres.



## Jeff Aguilar, PG

Principal Geologist | Ninyo & Moore

### Education

B.A., Geology, 1995,  
University of  
Nebraska, Lincoln

### Registrations

PG 8178 (California)  
OSHA 40-hour  
HAZWOPER with  
8-hour refreshers  
OSHA 8-hour HAZWOPER  
Site Supervisor  
Training  
First Aid and CPR Training

### Professional Affiliations

South Coast Geological  
Society

### Professional Summary

As a Principal Geologist, Jeff Aguilar has extensive experience as an environmental geologist and project manager and is skilled in portfolio and project management, regulatory and client interactions, technical report writing and data analysis. His areas of expertise include developing investigative scopes of work, cost proposals; permitting; feasibility studies; remedial design and implementation; subcontractor management; operation of treatment systems; compliance monitoring; reporting and regulatory negotiations. He is knowledgeable in the regulatory process of federal, state, and local agencies including the United States Environmental Protection Agency (USEPA), California Regional Water Quality Control Board (RWQCB) Cal-EPA Department of Toxic Substances Control (DTSC), Southern California Air Quality Management District (SCAQMD) and Orange County Health Care Agency (OCHCA).

### Project Experience

[APNS Moreno Valley, Hazardous Materials Assessment, Moreno Valley, CA](#)

**Principal Geologist** for a Hazardous Materials Assessment (HMA) for four parcels in Moreno Valley, California. The purpose of the HMA was to evaluate whether hazardous materials or recognized environmental conditions (RECs) (petroleum or other hazardous substances) were present on the parcels of land currently due to past or present use of the site and/or properties in the site's vicinity. Services included historical research, environmental database review, and site reconnaissance.

### [City of Corona, Phase I Environmental Site Assessment, Corona, CA](#)

**Principal Geologist** for the Phase I ESA for a property at 901 W. Sixth Street in Corona. The study follows the standard practices described in Section 6.2 of ASTM International (ASTM) Standard E 1527-21 and the United States Environmental Protection Agency's (EPA) All Appropriate Inquiries (AAI) rule (40 Code of Federal Regulations Part 312 Section 312.25).

### [City of Fontana, Phase I Environmental Site Assessment for 17001 Upland Avenue, Fontana, CA](#)

**Principal Geologist** for preparation of the Phase I ESA to evaluate the possibility that adverse environmental conditions are present at the site, due to past or present use of the site, and/or other properties in the site vicinity. The study followed the standard practices described in Section 6.2 of ASTM International (ASTM) Standard E 1527-21 and the United States Environmental Protection Agency's (EPA) All Appropriate Inquiries (AAI) rule (40 Code of Federal Regulations Part 312 Section 312.25).

### [MUFG Union Bank, Phase I Environmental Site Assessment for 8365 Beech Avenue, Fontana, CA](#)

**Principal Geologist** for preparation of the Phase I ESA to evaluate the possibility that adverse environmental conditions are present at the site, due to past or present use of the site, and/or other properties in the site vicinity. The study followed the standard practices described in Section 6.2 of ASTM International (ASTM) Standard E 1527-21 and the United States Environmental Protection Agency's (EPA) All Appropriate Inquiries (AAI) rule (40 Code of Federal Regulations Part 312 Section 312.25).



Vector Control Pipeline Abandonment, Indio, CA

**Principal Geologist** retained to conduct Phase I ESA of the approximate 2,581 feet of irrigation pipeline in Indio, California. At the time of the subject property reconnaissance, the subject property was undeveloped land associated with the Whitewater River to the north and west, a railroad and residential properties to the south, and commercial properties to the east. The Phase I was performed in conformance with the scope and limitations of ASTM E1527 21.



## Michael Putt, PG

Principal Geologist | Ninyo & Moore

### Education

B.S., Geology, 1997,  
California State  
University,  
Fullerton  
Applied Rock Slope  
Engineering Short  
Course,  
2006, Association of  
Engineering Geologists,  
California

### Registrations

PG 7581 (California)  
CEG 2341 (California)  
Radiological Safety and  
Gauge Use Certification,  
1997

### Professional Affiliations

South Coast Geological  
Society

### Professional Summary

Michael Putt is a Principal Geologist with Ninyo & Moore and has extensive experience in providing engineering geology consultation in Southern California. He has extensive experience on a variety of project types, including highways, bridges, bore and jack tunneled undercrossings, hillside and flat-land mass grading projects for residential, commercial, and industrial developments, pipelines, and forensic investigations. Michael performs project administration and management, prepares and reviews geologic and geotechnical reports and provides third party review services for geotechnical reports. He conducts geologic and geotechnical field evaluations, including detailed logging of large- and small-diameter borings and trenches, and geologic evaluation/mapping. Projects have included fault hazard evaluations, landslide studies, slope stability analysis, seismic refraction studies, geologic reconnaissance studies, forensic evaluations, and construction and inspection services.

### Project Experience

#### City of Victorville Third Party Reviews Services, Victorville, CA

**Principal Geologist** provided third party geotechnical report and plan review services for reports and construction plans submitted to the City of Victorville for new commercial development projects. Review services were based on the City of Victorville Standard Specifications for Public Improvements, the City of Victorville Safety Element, the 2022 California Building Code, and current standards of practice.

#### City of Jurupa Valley, Third Party Review Services, Jurupa Valley, CA

**Principal Geologist** for the two third-party geotechnical reviews for residential and commercial development project. The geotechnical review of Environmental Impact Reports are based on the current California Environmental Quality Act guidelines for Geology and Soils. The review of design-level reports are based on the guidelines presented in the current California Building Code (CBC), the County of Riverside Technical Guidelines for Review of Geotechnical and Geologic Reports, and the current standards of practice.

#### County of Orange, Third-Party and Plan Review Services, CA

**Principal Geologist** providing third-party geotechnical report and plan review services for reports and construction plans submitted to the County of Orange for new development projects. The projects include infrastructure improvements and new residential and commercial developments. Typical submittals that are reviewed include mass/ rough grading plans and geotechnical reports for large planning areas and residential tracts in hillside and flat-land terrain, precise grading plans and geotechnical precise grading plan review reports, roadways, and bridges, retaining walls and MSE wall plans and calculations, custom single family residential homes, building/foundation plans and calculations, park sites, and swimming pools and spas.



**Professional Environmental Consulting  
Services for Cherry Channel Drainage Project**

City of Beaumont



**Carbon Canyon Channel Improvements, Chino Hills, CA**

**Principal Geologist** performed a geotechnical evaluation for the San Bernardino County Flood Control District Carbon Canyon Channel Improvements project in Chino Hills, California. The project consists of widening approximately 1 mile of the existing trapezoidal earthen channel to accommodate a 100-year storm event and to provide flood protection in the area. Services included performing eight exploratory borings along the channel alignment, laboratory testing of representative soil samples, performing slope stability analysis, and preparing a geotechnical evaluation report.



Costa Mesa San Diego Portland

3151 AIRWAY AVE., SUITE F208  
COSTA MESA, CA 92626



[www.chambersgroupinc.com](http://www.chambersgroupinc.com)



## I. Scope of Services

### Task 1: Project Management and Meetings

#### Task 1.1: Project Management

The Project Management task will cover internal management, invoicing, communication, coordination, reporting, preliminary reviews of received reports, drafting schedule updates and meetings with the City. This task assumes no more than four Project check-in meetings virtually taking no more than 1 hour with Chambers Group staff, one Project presentation, and one City meeting during Project approval, lasting no more than 3 hours with 2 Chambers Group staff. Additional work including out-of-scope items and additional meetings, including public meetings, will be provided with the submittal of a contract amendment.

**Deliverables:** An electronic copy of the meeting agendas if required.

#### Task 1.2: Kick-Off Meeting

**Kick-off Meeting:** Project initiation will begin with a kick-off meeting with the City and the Chambers Group Project team to discuss the project history, project description, specific project issues, and CEQA schedule; as well as receive available project information and technical reports. It is assumed that this information will include the geotechnical studies, site plans, permits, and other pertinent project information. This meeting is assumed to take no more than 2 hours. After the kick-off meeting, Chambers Group will develop a list of additional data needs.

**Deliverables:** One electronic copy of the data needs list.

### Task 2: Data Gathering and Analysis

This task will cover the data gathering and analysis outlined in the Request for Proposal (RFP) such as, reviewing relevant City documents including previously submitted permits for the original installation and/or ongoing maintenance, previously prepared reports and other referenceable documents, figure and map development for the CEQA document including but not limited to the location and vicinity, land use, zoning, wildfire, utilities, and other public services. Technical desktop research for specific resources including biological and cultural resources are outlined in Task 4. This task assumes one preliminary site visit and check-in meetings with City staff.

**Deliverables:** Results of this task such as the identification of potential environmental concerns, Project conflicts, and required figures shall be summarized into a memorandum submitted electronically for one round of review. Three hard copies shall be sent to the City after the memorandum has been finalized.

### Task 3: Investigations

#### Task 3.1: Geotechnical Investigation

Ninyo & Moore's geotechnical scope of services will include the following:

- Review of the existing Technical Memorandum prepared by Converse Consultants for the Cherry Avenue Channel, other available geotechnical reports for adjacent developments, and readily available geologic maps, published geotechnical literature, geologic and seismic data, aerial photographs, groundwater data, and in-house information.
- Geotechnical reconnaissance to document the existing surficial conditions at the proposed project site.



**Commented [EB1]: Vincent Lopez**  
2024-04-29 14:42:36

Based on the six month scheduled provided by the Chambers Group, the cost for this item in the cost proposal seems substantially high for eight hours. Please revise and clarify. After kick-off meeting, we may only need 30-minute check-in meetings since we will be communicating back and forth via email.

**Commented [EB2R1]:** Per the RFP, this task included meetings with other agencies and presentations (including preparation time and travel) to the City. The full text from the RFP was not included given the page count requirements. Based on the discussion that this will be a straightforward project, and the estimates have been revised for 2 staff members, 8 hours each and reflects changes per the comments below



- Assessment of the general geologic conditions and seismic hazards affecting the site, and evaluation of their potential impacts on the Proposed Project. Evaluation of geologic impacts would include erosion potential, compressible soils, expansive soils, and shallow groundwater. Evaluation of seismic impacts would include potential surface rupture, ground shaking, and liquefaction.
- Preparation of a short report providing our findings and conclusions regarding geology and soils conditions that may impact the project and would be necessary to complete the final environmental document and associated permit applications.
- Consultation with other project consultants to provide geology/geotechnical input to the final environment documents.

**Task 3.2: Phase I ESA**

Ninyo & Moore's proposed scope of services for the Phase I ESA will include, but not necessarily be limited to, the following:

- A review of federal and state environmental record sources for the subject property and for properties located within the search radii prescribed by ASTM for the respective environmental record sources.
- A review of readily available and/or reasonably obtainable historical aerial photographs, Sanborn Insurance Maps, building plans, and United States Geological Survey Topographic Maps, etc.
- A subject property reconnaissance to visually evaluate subject property conditions.
- Interview owner representatives and/or other individuals familiar with the subject property, including past subject property operations, and construction history, if readily available and relevant.
- A subject property vicinity reconnaissance to evaluate conditions of adjacent or nearby properties for possible environmental influences on the subject property.
- Preparation of a Phase I ESA report that meets ASTM E1527-21 and EPA AAI reporting criteria.

**Assumptions:** The following assumptions have been made in the preparation of our scope of services.

It is the responsibility of the client to review environmental liens for the property or engage a title company to review such records. A lien search is not included as part of the proposed work scope. Ninyo & Moore can provide this service if requested as an additional service and fee.

In accordance with the ASTM E1527-21 standard, subject property-specific information will be requested from the user of the report in the form of a customized questionnaire or an interview with a designated representative, at the client's discretion.

Up to 4 hours have been estimated to review agency records for the subject property. Review of agency records for adjoining properties is not included in this proposal. Should available files require additional review time, additional cost to obtain, or other conditions be encountered that warrant additional research/evaluation (such as an in-person review of records at a local agency office), the client will be contacted for additional authorization. Up to 8 hours for the site reconnaissance are included in this task.

**Deliverables:** One electronic copy for one round of review and comment. Results to be incorporated into the IS.

**Task 4: Environmental Services**

**Task 4.1: Air Quality, GHGs, and Noise Evaluation**

Ldn Consulting will prepare air quality, GHG and noise evaluations for the proposed 24-21 Cherry Channel Drainage Project known as the "Project".



**Commented [EB3]: Vincent Lopez**  
2024-04-29 14:44:20

-----  
Please revise to be all inclusive. The City will forward/share all documents and records needed for assessment.

**Commented [EB4R3]: Revised.**

**Formatted:** Strikethrough

**Formatted:** Strikethrough

**Formatted:** Strikethrough



#### Air Quality

- Construction-related activities and emissions will be evaluated. This would consist of building demolition, import/export of soil, mass grading, etc. A qualitative assessment of potential impacts from toxic air emissions will be included. Evaluate applicable GHG emissions associated with heavy-duty construction equipment combustion that will likely occur during the various phases of construction; emissions will be quantified using the California Emissions Estimator Model® (CalEEMod) emissions inventory model.
- Consistent with the Air Quality Management Plan (AQMD) a screening-level diesel health risk assessment will be prepared for emissions resulting from short-term project construction activity, specifically diesel particulate matter.
- If the Project exceeds the Screening-Level Criteria for Air Quality Impacts as identified by the Air Pollution Control District (APCD), more detailed analysis may be required to determine mitigation solutions and would be included.
- The analysis shall address consistency with the ARB's Air Quality and Land Use Handbook, and potential sources of toxic air contaminants (TACs) from the project and strategies to reduce emissions along with design features and mitigation measures consistent with the County and APCD.

#### GHG

- Identify, characterize, and inventory any applicable GHG emissions currently being requirements (i.e., Assembly Bill's (AB) 32, 341, 1493, Senate Bill 97, and Executive Orders S-3-05, S-01-07, B-30-15).
- Evaluate applicable GHG emissions associated with heavy-duty construction equipment combustion that will likely occur during the various phases of construction. Evaluate net increase in applicable GHG emissions associated with mobile source activity. Data available from the project team and previous analysis will be utilized in characterizing GHG-generating activities.
- The results of this study effort will be summarized in a report as requested. The analysis will discuss the latest guidelines for Climate Change analyses as well as any California Air Resources Board (CARB) adopted thresholds of significance and the General Plan.

#### Noise

- The anticipated construction activities noise levels will be identified to determine if short term impacts will occur at the adjacent property lines. The calculated noise levels will be propagated to the nearest residences using the logarithmic relationship describing the acoustical spreading or drop off rate of 6 dB per doubling of distance from the source. The propagated noise levels will be compared to the applicable standards. If potential impacts are identified, feasible mitigation measures will be designed.
- The analysis will discuss the local guidelines and adopted thresholds of significance for Noise.

#### Revisions and Coordination

- If additional emissions reduction calculations, report revisions, environmental coordination or agency requests are required, LDN will work with the City to determine any and all additional efforts and associated costs prior to any additional work commencing. For budgeting purposes and to avoid contract changes when these services are requested, LDN will perform these additional services on a time and materials basis.

**Deliverables:** One electronic copy of the report for one round of review. Results to be incorporated into the Initial Study (IS).



**Task 4.2: Biological Survey and Report (with MSHCP Consistency Analysis)**

Chambers group will conduct a biological resources survey for the Project, including a habitat assessment, and will prepare a biological technical report which will include an analysis of the Project’s consistency with Western Riverside County Regional Conservation Authority (RCA) Multiple Species Habitat Conservation Plan (MSHCP) requirements and recommended avoidance and mitigation measures.

Prior to conducting the biological resources survey, Chambers Group will review the RCA MSHCP Information Map for applicable criteria and survey requirements for the assessor parcel number(s) containing the Project. Survey requirements for MSHCP species not adequately covered will also be reviewed. The U.S. Department of Agriculture (USDA) Natural Resources Conservation Service (NRCS) soil survey will be reviewed to identify soils that occur within the Project site. The USFWS National Wetlands Inventory (NWI), the U.S. Geological Survey’s (USGS) National Hydrography Dataset (NHD), Google Earth imagery, and historical aerial photographs of the Project site and vicinity will be reviewed for hydrological features that may fall under the regulatory jurisdiction of the USACE pursuant to Section 404 of the Clean Water Act, RWQCB jurisdiction pursuant to Section 401 of the Clean Water Act, and CDFW jurisdiction pursuant to Section 1602 of the Fish and Game Code. This task will also include a review of CDFW’s California Natural Diversity Database, the California Native Plant Society’s Electronic Inventory, and the USFWS’ Information for Planning and Consultation for existing records of listed and/or special status plant and wildlife species and habitats occurring on or in the vicinity of the Project.

After conducting the literature review, biologists will conduct the biological resources survey and habitat assessment within the approximately 3-acre Project site. Chambers Group biologists will document the presence of common and sensitive biological resources, both flora and fauna, within the Project boundaries. The survey will focus on determining the potential presence of federal- and state-listed or otherwise special status plant and wildlife species and sensitive habitats, including suitable habitat for burrowing owl, birds associated with riparian/riverine areas, and narrow endemic plants including Yucaipa (Marvin’s) onion and many-stemmed dudleya. Per the *Burrowing Owl Survey Instructions for the Western Riverside Multiple Species Habitat Conservation Plan Area* (survey instructions; protocol), if burrowing owl habitat are found on site a 500-foot boundary around the Project site will be walked (where accessible and permitted), to map suitable burrowing owl habitats. All vegetation communities and other landcover types will be mapped, qualitatively described, and assessed for the potential for occurrence for special status species. Photographs will be taken to document the conditions of the Project site at the time of the survey. All plant and wildlife species observed or detected during the survey will be recorded.

Chambers Group will prepare a biological technical report that will include an introduction, methods used to conduct the survey, results of the survey documenting the existing biological resources, a discussion of special status plant and wildlife species with the potential to occur on the Project site, an analysis of the Project’s consistency with MSHCP requirements), recommended avoidance and mitigation measures, and any required focused surveys.

~~The report will contain up to 40 pages of text and tables, up to eight figures, and up to 80 pages of appendices including literature searches, site photographs, and lists of plant and wildlife species observed or detected during the survey.~~

The biological resources survey will be conducted within 2 weeks of receiving the NTP. Chambers Group will submit three hard copies and one electronic copy of the draft biological technical report to the City



**Formatted:** Strikethrough

**Commented [EB5]:** Vincent Lopez  
2024-04-29 20:42:20

The amount of pages may be sufficient however, the City does not want to be limited to these amounts to trigger costs above an awarded amount.

**Commented [EB6R5]:** Revised.

**Formatted:** Strikethrough

**Formatted:** Strikethrough

within 4 weeks following the completion of the biological resources survey and habitat assessment. Chambers Group will incorporate one round of comments from the draft report into a final report and will deliver three hard copies and one electronic copy of the final report to the City upon completion. Geographic information system (GIS) shapefiles will also be provided to the City.

**Assumptions:** ~~The level of effort for Task 4.2 assumes two biologists surveying the site in 1 day. If additional survey time is required due to unforeseen circumstances, Chambers Group will revise the cost in coordination with the City.~~

The scope of work for Task 4.2 does not include focused surveys or a formal jurisdictional delineation. If needed, BUOW focused surveys will be provided under Task 4.3. A formal jurisdictional delineation and reporting is provided under Task 5.1. ~~If additional focused surveys are required based on the results of the biological resources survey, Chambers Group will provide them as a separate scope and cost.~~ The scope of work for Task 4.2 includes up to 4 hours for responding to agency letters and comments.

While not anticipated, if any published updates to the Consistency Analysis Report Template should occur prior to the biological technical report/MSHCP consistency analysis being completed, and if the updates should substantially change the level of work required for this report or require any additional studies be conducted prior to analysis, Chambers Group will revise reporting costs (if needed) after approval from the City.

**Deliverables:** One electronic copy of the report for one ~~round of review for substantive revisions~~ and comments. Reasonable rounds of revisions such as minor comments and clarifications are covered under this task. Results to be incorporated into the IS.

#### Task 4.3: Burrowing Owl Survey Instructions for the MSHCP (if needed)

Based on the results of the biological resources survey and habitat assessment, if suitable burrowing owl habitat is present on or adjacent to the Project site, a focused burrow survey and focused burrowing owl surveys must be conducted in accordance with the survey instructions. The purpose of focused burrowing owl surveys is to identify if, when, and how the site is being used by burrowing owls. Focused burrowing owl surveys will be conducted within the approximately 3-acre Project site and a 500-foot buffer (survey area). Following the survey instructions protocol, the burrowing owl focused surveys will include a minimum of one, and up to four separate site visits during the burrowing owl breeding season (March 1 through August 31).

The first visit will include a focused burrow survey to locate and map location of all suitable burrowing owl habitat, potential owl burrows, burrowing owl sign, and any burrowing owls; if no potential burrows or burrowing owls are detected, no further surveys are required. If the survey area contains natural or man-made structures that could potentially support burrowing owls, or owls are observed during the burrow surveys, four separate site visits during the burrowing owl breeding season must be conducted. The first focused survey may be conducted concurrent with the focused burrow survey. The remaining three focused burrowing owl survey visits will be conducted as specified in the survey instructions protocol. During each focused survey, dominant plant species and all wildlife species observed/detected will be recorded, and site photographs will be taken depicting the survey area and any evidence of burrowing owl.

**Formatted:** Strikethrough

**Commented [EB7]: Vincent Lopez**  
2024-04-29 17:03:11

This task needs to be all inclusive for the biological surveying.

**Commented [EB8R7]:** Revised

**Formatted:** Strikethrough

**Formatted:** Strikethrough

**Commented [EB9]: Vincent Lopez**  
2024-05-01 16:18:00

Task needs to be all inclusive. The City is under the assumption that the Chambers Group visited the Channel.

**Commented [EB10R9]:** A general site visit was performed. However, based on a more detailed assessment and based on input from regulatory agencies additional surveys are sometimes required. There is no way to determine what the more detailed survey and agency requests are at this time. Additional surveys based on our more detailed literature review and survey is unlikely to result in additional surveys required for project. However, the resource agency's are unpredicted. For example they are now asking for couches bumble bee surveys on most project in the area but they do not specify what habitats should include surveys.

If there are any previously prepared studies that have been done for the site, there are potential cost savings we could implement for this project.

**Commented [EB11]: Vincent Lopez**  
2024-04-29 20:43:31

What if another round is needed? The City would like to award a fixed contract amount to complete this project.

**Commented [EB12R11]:** Noted that substantive comments will have one round and understand that minor revisions back and forth is covered under this task.



According to the protocol, surveys will not be conducted during rain, winds greater than 20 miles per hour, dense fog, or temperatures over 90 degrees Fahrenheit. Potential burrowing owl burrows will be examined for burrowing owl sign and all evidence of burrowing owl or burrowing owl sightings within the Project site will be documented, digital photographs will be taken, and locations will be recorded using a handheld Global Positioning System (GPS) device.

After completing the required field surveys, methods and findings will be summarized and incorporated into a focused survey report. The locations of any suitable burrows, burrowing owls, or burrowing owl sign encountered will be mapped and corresponding GPS coordinates will be provided. ~~The report will be include up to 15 pages of text, tables, and figures and up to 20 pages of appendices including Plant and wildlife species lists, site photographs, and field survey forms.~~ Chambers Group will submit three hard copies and one electronic copy of the draft burrowing owl focused survey report to the City within 4 weeks following the completion of the final survey. Chambers Group will incorporate one round of comments from the draft report into a final report and will deliver three hard copies and one electronic copy of the final report to the City upon completion. GIS shapefiles will also be provided to the City.

**Assumptions:** The cost for Task 4.3 includes two biologists surveying the Project site and buffer in one full day during the first site visit, and in a half-day (either a dawn or dusk survey), during each of the three subsequent site visits. If for unforeseen circumstances additional survey days are necessary (e.g., adverse weather conditions canceling a survey), Chambers Group will provide them after approval from the City. The scope of work for Task 4.3 includes up to 2 hours for responding to agency letters and comments.

**Task 4.4: DBESP Report**

After all required surveys for the Project have been conducted and the respective survey reports have been prepared and accepted, Chambers Group will prepare a DBESP. The DBESP will follow the most-recent version of the DBESP template available on the Regional Conservation Authority's website, and will include Executive Summary, Introduction, Riparian/Riverine Mitigation (MSHCP Section 6.1.2), Narrow Endemic Plant Species Mitigation (MSHCP Section 6.1.3), Additional Survey Needs (MSHCP Section 6.3.2), Delhi Sands Flower-Loving Fly (MSHCP Section 6.3.2), and Reference section, and supporting appendices.

The DBESP report will include up to 30 pages of text, tables, and figures and up to 250 pages of supporting appendices (including biological surveys and jurisdictional delineation reports). Chambers Group will submit three hard copies and one electronic copy of the draft DBESP report to the City within 4 weeks following completion of all required Project surveys and reports. Chambers Group will incorporate one round of comments from the draft DBESP report into a final DBESP and will deliver three hard copies and one electronic copy of the final report to the City upon completion.

**Assumptions:** While not anticipated, if any published updates to the MSHCP DBESP template should occur prior to the DBESP for the Project being completed, and if the updates should substantially change the level of work required for this report or require any additional studies be conducted prior to analysis, Chambers Group will revise the cost of the DBESP (if needed) after approval from the City. ~~The scope of work for Task 4.4 includes up to 4 hours for responding to agency letters and comments.~~

**Deliverables:** One electronic copy of the report for one round of review and comment. Results to be incorporated into the IS.

**Commented [EB13]: Vincent Lopez**  
 2024-04-29 17:05:20  
 -----  
 The price for this task and report needs to be all inclusive regardless of the amount of pages.

**Commented [EB14R13]:** Revised language

**Formatted:** Strikethrough

**Commented [EB15]: Vincent Lopez**  
 2024-04-29 17:07:24  
 -----  
 The City is relying on the Chamber Group's expertise for this task. The price will need to be all inclusive without limits before change orders are requested.

**Commented [EB16R15]:** Comment addressed and scope updated

**Formatted:** Strikethrough

**Formatted:** Strikethrough



**Task 4.5: Cultural Resources Literature Review, Desktop Research and Consultation**

**Task 4.5.1: Literature Review and Desktop Research**

Chambers Group will conduct a literature review, including a review of the findings of a records search through the California Historical Resources Information System (CHRIS) database at the appropriate Information Center (IC). The records search will be conducted by IC staff and review relevant previously recorded cultural resources and previous investigations completed for the half-mile search radius surrounding the project site. A paleontological records search will also be completed for the half-mile search radius surrounding the Project site by the relevant Natural History Museum.

In addition to the above research, a request that the Native American Heritage Commission (NAHC) will be submitted for a review of their sacred land files (SLF). This search will identify if any resources important to Native Americans have been recorded within the project area and surrounding vicinity. The NAHC will provide the results and a list of affiliated tribal representatives to contact for additional information. Chambers Group will provide the results of the NAHC SLF search and list of tribes in the desktop cultural resources letter report. Note: This research alone does not satisfy the lead agency's requirements under AB 52. It is assumed that the lead agency will conduct AB 52 Tribal Consultation. Upon request, Chambers Group can assist in coordinating AB 52 consultation requirements (see Task 4.5.3).

**Assumptions:**

- The City will provide Chambers Group with confirmation on the Project footprint at the time of authorization or NTP. It is assumed that this information will not change once Chambers Group has initiated the tasks above.
- All required records searches will be submitted within 1 week of receipt of NTP.
- Fees incurred by the IC and Museum to conduct the record searches, estimated at \$1,380.00, are included as part of this task. We will bill the actual amount these institutions charge without a markup.
- Currently, the IC estimates 6 to 8 weeks from the date of request to provide results for a records search. In addition, fees incurred by the relevant Natural History Museum to conduct the paleontological record search are included as part of this estimated cost. Currently, the Museum estimates 2 to 3 weeks from the date of request to provide results for a records search. Currently, the NAHC estimates 6 to 8 weeks from the date of request to provide results for the SLF request.
- This task does not currently include the issuance of NAHC Scoping Notification Letters to NAHC-listed points of contact to request information regarding the proposed Project site. These informal evidence gathering letters are not a substitute for government-to-government consultation by the permitting agency. If the SLF search returns positive results and/or the City requests that these notification letters be transmitted, a revised scope of work and cost will be necessary.
- This task assumes that no previously documented cultural resources are recorded within the Project site. If the records search data reveals that potentially significant cultural resources are documented within the Project site and/or surrounding half-mile radius study area that may be affected by the Project, further research, such as a field survey, may be required, at additional cost.
- This task does not include cultural resources survey, testing, data recovery, analysis, monitoring, or similar programs.

**Deliverables:** This task includes a records search requests, review of results provided, and minimal research to be incorporated within the Cultural Resources Report.



#### Task 4.5.2: Cultural Resources Desktop Report

Chambers Group will complete a desktop study and prepare a Cultural Resources Report deliverable. The Cultural Resources Report will be prepared according to Archaeological Resource Management Report (ARMR) Guidelines and California State Historic Preservation Office (SHPO) Guidelines, detail the methods used, and describe the results of the records search, all additional research and literature review, and any related recommendations. The report will not include results from an on-ground survey of the proposed Project site as it is perceived that little meaningful data can be gleaned from a pedestrian survey of the area due to the location of proposed direct impacts being located within compacted, semi-impervious surfaces within an active channel system. The report is assumed to contain up to 30 pages of text, graphics, and appendices. The report will also discuss the paleontological records search results and the basic geologic context of the Project site, to support any related recommendations regarding paleontology, as well as addressing the results of the NAHC SLF records search.

#### Assumptions:

- Chambers Group will provide a draft report to the City for review within 4 weeks after receipt of all requested records search data.
- This task cost estimate assumes that only one round of substantive consolidated report comments from the City will be received to be incorporated into the final document within 2 weeks after draft review. If additional comments are received, a revised scope of work and cost for additional review may be necessary.
- This task does not include cultural resources, survey, testing, data recovery, analysis, monitoring, or similar programs. It is assumed that existing hardscape, geo-material liner, and landscape features located within the proposed Project site will preclude effective ground surface visibility and impede the ability to adequately identify and assess the presence of archaeological resources. Therefore, an on-foot survey of the Project site is NOT recommended. Should an archaeological resources inventory survey be required a separate scope and cost will be required.
- This task does not include survey and analysis of historic period-built environment resources. It is assumed that no such resources are located within the Project site or adjacent right-of-way (publicly accessible surface streets). If historic period-built environment infrastructure is identified within the Project right-of-way, and may be affected by the Project, these resources would need to be evaluated for eligibility for listing on the National Register of Historic Places, the California Register of Historical Resources, and/or a local register. If historic period-built environment resources that may be affected by the Proposed Project are identified, a separate scope and cost will be required to assess these resources.

**Deliverable:** One electronic copy of the Desktop Cultural Resources Report. Results to be incorporated into the IS.

#### Task 4.5.3: AB 52 Tribal Consultation Support

AB 52 required an update to CEQA Appendix G to include a new category titled "Tribal Cultural Resources". As a Lead Agency, the City is required to conduct AB 52 consultation with requesting tribal groups on a government-to-government basis.

**Commented [EB17]:** Similar to the previous response that this will include a reasonable amount of minor revisions after substantive comments have been made





This task will provide support to the City including, but not limited to preparing and transmitting Request to Consult Letters to respective tribes via email and certified mail; support with consultation regarding the proposed Project plans and potential impacts; support arranging conference calls with tribes; and/or development of mitigation measures, as appropriate. Should any tribe request a site visit, or require further calls to conclude consultation, it is assumed that City will cover this expense and provide the tribe(s) an opportunity to visit the Project site.

**Assumptions:**

- It is assumed that City has a prepared list of no more than three Tribal Representatives who have previously expressed a desire to be notified when a project requires AB 52 consultation.
- This task includes AB 52 consultation support with requesting tribal groups and includes time for assisting and/or attending up to three 1 hour meetings with City Staff and tribal members in an online forum, and up to 2 hours to assist drafting potential mitigation measure language.
- This proposal does not include attending field visits requested by tribal groups requesting consultation. Based on recent experience, field visits with the tribal groups have not been requested.

**Deliverable:** Up to four Request to Consult Letters and Project site maps for District review; assist with up to three 1-hour consultation meetings; prepare Tribal Consultation Summary memo.

**Task 4.6: CEQA Documentation**

**Task 4.6.1: Project Description and IS**

**Project Description:** Chambers Group will develop a comprehensive description for the Proposed Project that will form the basis for the analysis of the potential impacts on the environment, based on the information provided by the City. The project description will include a narrative and graphical presentation of the Proposed Project, including components, location and boundaries, regional and vicinity maps, and a statement of the Project goals and objectives.

**Prepare IS Checklist:** Chambers Group shall prepare an IS Checklist to determine the appropriate level of CEQA documentation for the Proposed Project which is assumed to be either a Negative Declaration (ND) or MND. The IS will be prepared using the most recent revision of the IS Environmental Checklist Form suggested in the CEQA Guidelines Appendix G or utilizing a format preferred by the City in compliance with CEQA Section 15063. Chambers Group will provide one electronic PDF copy of the Administrative IS Checklist for District review.

**Deliverables:** One electronic copy of the project description and IS checklist for one round of review and comment.

**Task 4.6.2: Draft MND**

**Prepare Administrative Draft MND:** If one or more significant impacts are identified during the IS process, and in the technical reports prepared for Tasks 4.2 to 4.5 and Task 5, CEQA allows the preparation of an MND when those impacts can be mitigated to a less-than-significant level. The preparation of an ND is similar to MND, with the exception that an MND includes mitigation measures. Therefore, the description of an MND is provided in this task.

**Commented [EB18]: Vincent Lopez**  
2024-04-29 17:09:45

The Chambers Group is contracted with the City as an As-Needed Consultant. The Chambers Groups should have such list based on previous task orders.

**Commented [EB19R18]:** Understood. Revised and kept one assumption. Based on previous consultations, no tribes have requested our presence during field visits

**Formatted:** Strikethrough

**Formatted:** Strikethrough

**Formatted:** Strikethrough



For each CEQA environmental checklist discipline item, the existing environmental setting of the Proposed Project site and surroundings will be characterized from the existing literature base and a site visit by an environmental analyst. An environmental impacts analysis will be prepared for each checklist entry. Based on CEQA-defined significance criteria, Chambers Group will determine the potential for any adverse or significant adverse impacts and present mitigation measures to reduce any such impacts to a level below significance. Chambers Group will provide one electronic PDF copy of the Administrative Draft MND for one round of City review and one round to finalize the revised changes.

**Prepare/Distribute the MND and Notice of Intent:** For submittal to the Office of Planning and Research (OPR), Chambers Group will draft a Notice of Intent (NOI), Notice of Completion (NOC), Summary Form, and the Public Draft IS/MND with associated appendices to be submitted electronically on behalf of the City. The City must approve Chambers Group as a submitter for the City on the OPR CEQANet Web portal.

Chambers Group will prepare the NOI for distribution during the public review to agencies, interested parties, and property owners adjacent to the Proposed Project from an approved distribution list provided by the City. We assume up to 25 mailings of the NOI via regular mail to adjacent property owners and up to 10 mailings of the NOI via certified mail to agencies and other interested parties. Chambers Group will file the NOI to adopt an MND with the County Clerk. We assume the City will be responsible for newspaper publications or on-site postings.

**Note:** This task does not include attendance at any public or community outreach meetings. The environmental document will not be circulated until AB 52 consultation has been concluded.

**Deliverables:** One electronic PDF copy of the Public Review Draft MND and technical reports as appendices for distribution. Up to three hard copies of the Public Review Draft MND with technical reports/appendices on thumb drive or CDs. Up to 25 mailings 60 mailings to adjacent property owners via regular mail, and up to 10 mailings to agencies and interested parties via certified mail. State Clearinghouse submittal will be done electronically. Should additional mailings be required; Chambers Group can prepare and mail additional notices at an additional cost.

**Task 4.6.3: Final MND**

**Prepare Final MND with Response to Comments:** Based upon comments received from public review, responses to the comments will be prepared. For the purposes of this proposal, and understanding that the Project would not be controversial to the existing neighborhood, no more than 100 comments, up to 15 comment letters on the IS/MND are assumed, with responses requiring minimal further investigation or studies. A draft of these responses will be provided to the City. Upon receipt of one complete set of comments from the City on the responses, a Final MND will be prepared. This document combined with the Draft MND will constitute the Final MND to be used by the City when considering approval of the Proposed Project. This Task will include up to two rounds of comments from the City.

**Prepare MMRP and NOD:** Following preparation of the MND, Chambers Group will prepare a Draft MMRP. The Final MMRP incorporating the City's comments will be incorporated into the Final MND. The Notice of Determination (NOD) is filed following the City's decision to carry out or approve the Proposed Project for which the MND has been prepared. Chambers Group will prepare the NOD and will file the NOD with the State Clearinghouse and the County Clerk. The City will be responsible for CDFW filing fees, if necessary. Chambers Group will provide up to three hard copies of the NOD; the NOD is to be filed electronically with the State Clearinghouse and one filed with the County Clerk.

**Commented [EB20]: Vincent Lopez**  
2024-04-29 17:11:28

As discussed, the City is relying on the Chambers Group to full vet the affected property owners. The price should reflect an all inclusive cost based on this analysis.

**Commented [EB21]: Vincent Lopez**  
2024-04-29 17:11:28

As discussed, the City is relying on the Chambers Group to full vet the affected property owners. The price should reflect an all inclusive cost based on this analysis.

**Commented [EB22R21]:** Included the total number of addresses that are adjacent to the channel

**Commented [EB23]: Vincent Lopez**  
2024-04-29 17:11:52

Same as above.

**Commented [EB24R23]:** Updated based on the number of properties. This is also assumed that updates to the channel would not be controversial.



**Deliverables:** Three hard copies of the draft Final MND and reviewed Final MND with the technical reports/appendices on thumb drive or CD.

#### Task 5: Jurisdictional Delineation and Regulatory Permitting

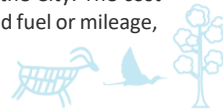
##### Task 5.1: Jurisdictional Delineation

Chambers Group will conduct a desktop analysis prior to the field survey and delineation of Cherry Channel. USGS quadrangle maps and hydrological features, NRCS soil survey maps, NHD maps, USFWS NWI maps, and historical aerial imagery will be reviewed. Aerial imagery of the Project site and immediately adjacent areas will be searched for other potentially jurisdictional features including v-ditches, culverts, swales, etc., and potential connectivity to any Traditional Navigable Waters.

Potential waters and wetland habitats on the site will be evaluated using the methodology set forth in the *Corps of Engineers Wetland Delineation Manual* (USACE 1987) and the *Regional Supplement to the Corps of Engineers Wetland Delineation Manual Arid West Region Version 2.0* (USACE 2008). This preliminary jurisdictional delineation will be consistent with the 2023 Rule revising the definition of Waters of the United States (WoUS) and the August 29, 2023, amendment and includes measurement of the Ordinary High Water Mark (OHWM) to determine WoUS. Surveyors will walk the Project site, specifically Cherry Channel, and will identify and map limits of jurisdiction with a submeter GPS device. The surveyors will document the boundary of the OHWM and Bank to Bank features as identified within the Project site. Hydrologic indicators include evidence of inundation, saturation, watermarks, drift lines, and sediment deposits. OHWM data will be recorded on USACE Rapid Ordinary High Water Mark Field Identification Data Sheets. Soils will be investigated for hydric characteristics. Wetland boundaries (if present) will be determined using the current accepted methodology prescribed in the USACE 1987 and USACE 2008. This method requires positive evidence of hydrophytic vegetation, hydric soils, and wetlands hydrology to be considered a wetland. If potential wetlands are identified, soil pits will be established to determine the wetlands/uplands boundaries. Soil pit data will be recorded on USACE Arid West Region Wetland Determination Forms. The boundaries of hydrological features will be mapped in a shapefile that will distinguish each agency's respective jurisdiction (USACE, CDFW, and RWQCB) based on current agency guidance documents. Photographs of hydrological features and any soil pits will be taken. Vegetation communities will be mapped during the biological resources survey under Task 4.2.

The jurisdictional delineation will be conducted within two weeks of receiving the Notice to Proceed. Following the survey, Chambers Group will prepare a preliminary jurisdictional delineation report documenting the survey results. The report will include Introduction, Regulatory Overview, Methods, Results, Summary of Jurisdictional Findings, Conclusions and Recommendations, and Reference sections. The report will include up to 35 pages of text, tables, and figures and up to 20 pages of appendices including photographs of the site, OHWM and wetland determination datasheets, and plant and wildlife species lists. Chambers Group will submit three hard copies and one electronic copy of the draft preliminary jurisdictional delineation to the City within 4 weeks of conducting the survey. Chambers Group will incorporate one round of comments into the final report and will submit three hard copies and one electronic copy of the final report to the City upon completion. GIS shapefiles will also be provided to the City.

**Assumptions:** The level of effort for Task 5.1 assumes one biologist conducting jurisdictional delineation in 1 day concurrently with the biological resources survey. If additional survey time is required due to unforeseen circumstances, Chambers Group will revise the cost in coordination with the City. The cost for Task 5.1 includes field survey time, mobilization/demobilization time, vehicle use and fuel or mileage,



personal protective equipment, submeter GPS and camera use, data management, project management time, GIS support, and reporting time.

The scope of work for Task 5.1 includes up to 4 hours for responding to agency letters and comments.

**Task 5.2: USACE, RWQCB, and CDFW Permit Coordination and Applications**

Chambers Group assumes the City will directly pay any associated project permit fees to the corresponding regulatory agencies for this task, as applicable.

**Preparation of USACE 404 Permit Applications:** The level of work associated with preparing the notification to the USACE pursuant to Section 404 is dependent on the magnitude of project impacts on jurisdictional waters and other resources. The delineation determines if the project requires an individual permit or if it could fall under a nationwide permit. For scope and costing purposes, Chambers Group assumes the project would qualify for a Nationwide Permit (NWP), which would expedite the permitting process compared to an Individual Permit. If it is determined that a NWP is not valid for the final project description, Chambers Group will inform the City and additional costs may be required, depending on the application requirements. This cost estimate includes preparation of the notification package, including support information in compliance with the NWP and minimal, minor coordination with USACE is included.

**Preparation of Written Notification for Water Quality (401) Certification:** A water quality certification is required from the RWQCB for any activity that requires a federal license or permit (such as a Section 404 permit) and may result in a discharge to jurisdictional waters. RWQCB requires pre-filing application meetings a minimum of 30 days prior to the submittal of an application. Chambers Group will coordinate the meeting and prepare and submit the necessary documentation to the RWQCB for its review of the project pursuant to water quality certification. Chambers Group will schedule one additional meeting with the RWQCB at the Project site, if necessary, to facilitate the RWQCB's review of the Project and completion of the water quality certification. This cost estimate includes no more than two rounds of comments from RWQCB and those comments do not request or require further study than what is readily available and/or identified in this proposal.

**Preparation of CDFW 1600 Permit Application:** Chambers Group will prepare and submit a notification to CDFW for a 1600 Lake and Streambed Alteration Agreement (SAA). CDFW has transitioned to an entirely online application process through the Environmental Permit Information Management System (EPIMS). This will require the City to have an account on EPIMS to initiate the permit application and sign any documentation. Chambers Group assumes the City will provide permissions to fill out the application on the City's behalf, but assumes the City will sign the application. Chambers Group will schedule one meeting with CDFW at the Project site, if necessary, to facilitate CDFW's review of the Project and completion of the Agreement. This cost estimate includes no more than two rounds of comments from CDFW and those comments do not request or require further study than what is readily available and/or identified in this proposal.

**Permit Application Processing:** Chambers Group will coordinate with USACE, CDFW and RWQCB throughout their review of the regulatory permit applications to ensure that any potential concerns are made known to the City and resolved at the earliest possible opportunity.



If the regulatory permits are being prepared in concurrence with the CEQA document rather than subsequent, they will be submitted to the agencies at the time of the Draft circulation to ensure that the permits are processed in a timely manner along with the rest of the Project. This also ensures that the agencies are involved in the preparation of the environmental document and mitigation development, if necessary.

**Deliverables:** Draft and Final Permit Applications for 404 NWP, 401 WQC, and 1600 LSAA

**J. Cost Proposal**

Submitted in a separate, sealed envelope.

**K. Other Information**

Chambers Group has provided the City with environmental services for several years on various development projects. *We are knowledgeable not just on City processes but also with the existing biological and cultural environment within the City and County, as well as agencies and organizations that have interests in the area such as CDFW and various tribal governments.*



**Professional Environmental Consulting Services for  
Cherry Channel Drainage Project**  
City of Beaumont

Project Cost	Subtotal	Other Direct Costs	Subtotals
Task 1: Project Management and Meetings	\$2,896.00	\$335.00	\$3,231.00
Task 2: Data Gathering and Analyses	\$7,340.00	\$335.00	\$7,675.00
Task 3.1: Geotechnical Investigation	\$8,970.00	-	\$8,970.00
Task 3.2: Phase I ESA	\$6,779.25	-	\$6,779.25
Task 4.1: Air/GHG/Noise	\$17,940.00	-	\$17,940.00
Task 4.2: Bio Survey and Report (with MSHCP Consistency Analysis)	\$14,301.50	\$982.40	\$15,283.90
Task 4.3: Burrowing Owl (Optional)	\$11,796.50	\$1,188.02	\$12,984.52
Task 4.4: DBESP Report	\$7,249.00	\$1,520.40	\$8,769.40
Task 4.5: Cultural Resources Literature Review, Desktop Research and Consultation and AB 52 Tribal Consultation	\$10,838.00	\$1,500.00	\$12,338.00
Task 4.6: CEQA Documentation (IS/MND)	\$36,536.00	\$827.00	\$37,363.00
Task 5: Jurisdictional Delineation and Regulatory Permitting	\$29,117.50	\$646.02	\$29,763.52
Tasks Totals	\$164,501.75	\$7,333.84	\$171,835.59
<b>Total with Optional Task</b>			\$164,565.59
<b>Total without Optional Task</b>			\$151,581.07

