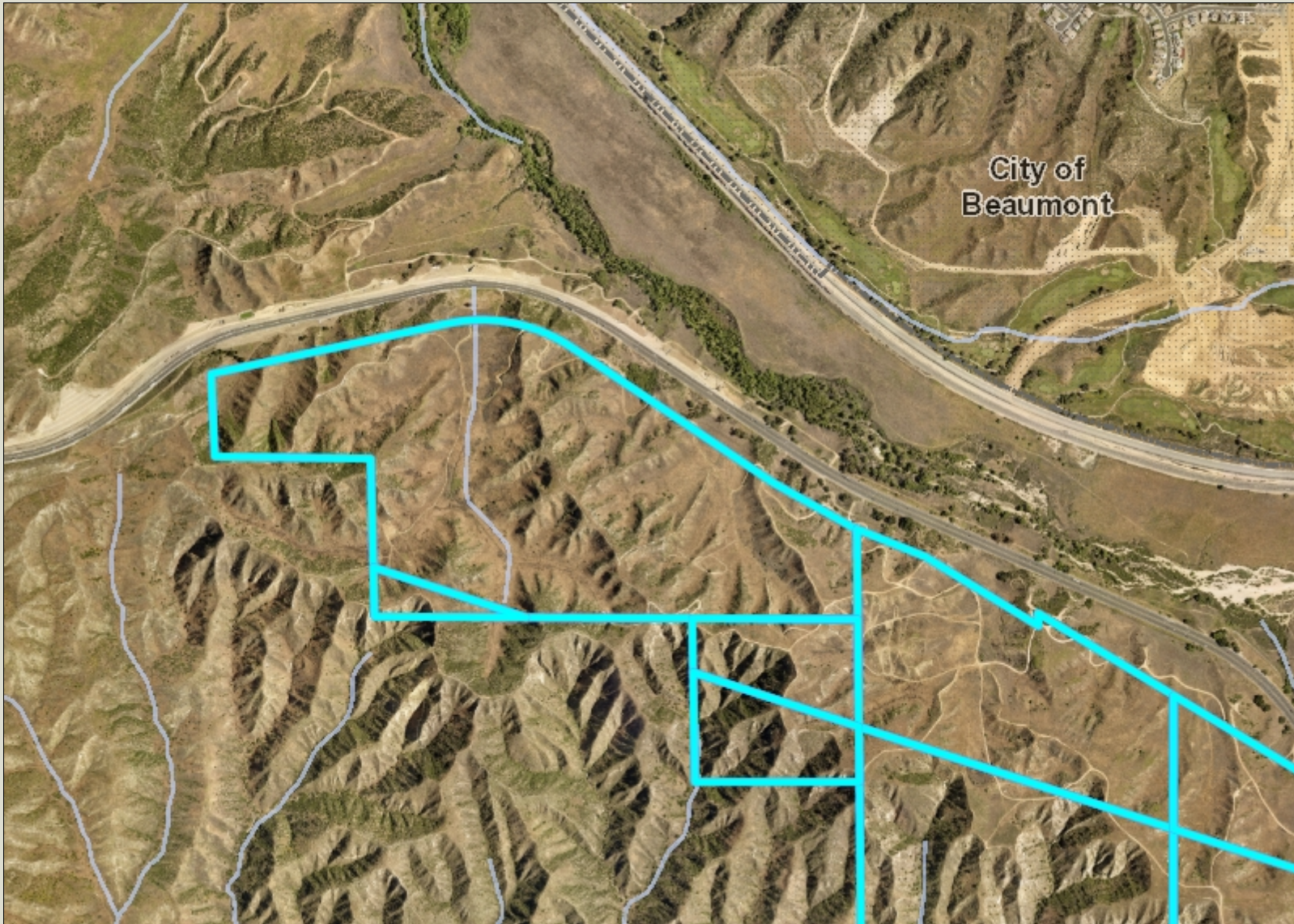


Beaumont Pointe

Aerial Photograph 1 of 3



Legend

-  Blueline Streams
-  City Areas
-  World Street Map



IMPORTANT Maps and data are to be used for reference purposes only. Map features are approximate, and are not necessarily accurate to surveying or engineering standards. The County of Riverside makes no warranty or guarantee as to the content (the source is often third party), accuracy, timeliness, or completeness of any of the data provided, and assumes no legal responsibility for the information contained on this map. Any use of this product with respect to accuracy and precision shall be the sole responsibility of the user.

Notes

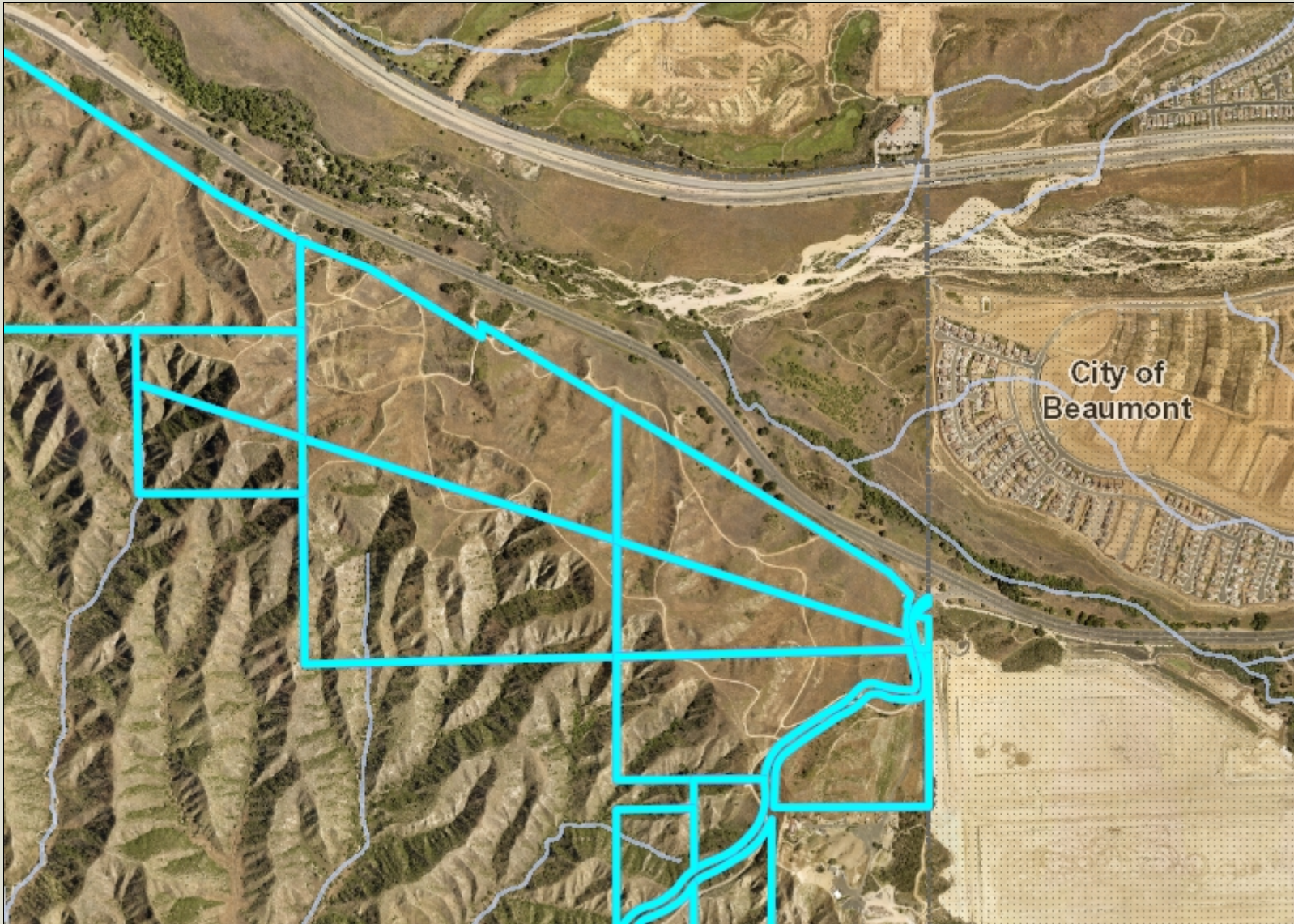
0 1, 3,079 Feet
539

REPORT PRINTED ON... 11/8/2023 2:47:25 PM



© Riverside County GIS

Beaumont Pointe

Aerial Photograph 2 of 3



Legend

-  Blueline Streams
-  City Areas
-  World Street Map



IMPORTANT Maps and data are to be used for reference purposes only. Map features are approximate, and are not necessarily accurate to surveying or engineering standards. The County of Riverside makes no warranty or guarantee as to the content (the source is often third party), accuracy, timeliness, or completeness of any of the data provided, and assumes no legal responsibility for the information contained on this map. Any use of this product with respect to accuracy and precision shall be the sole responsibility of the user.

Notes

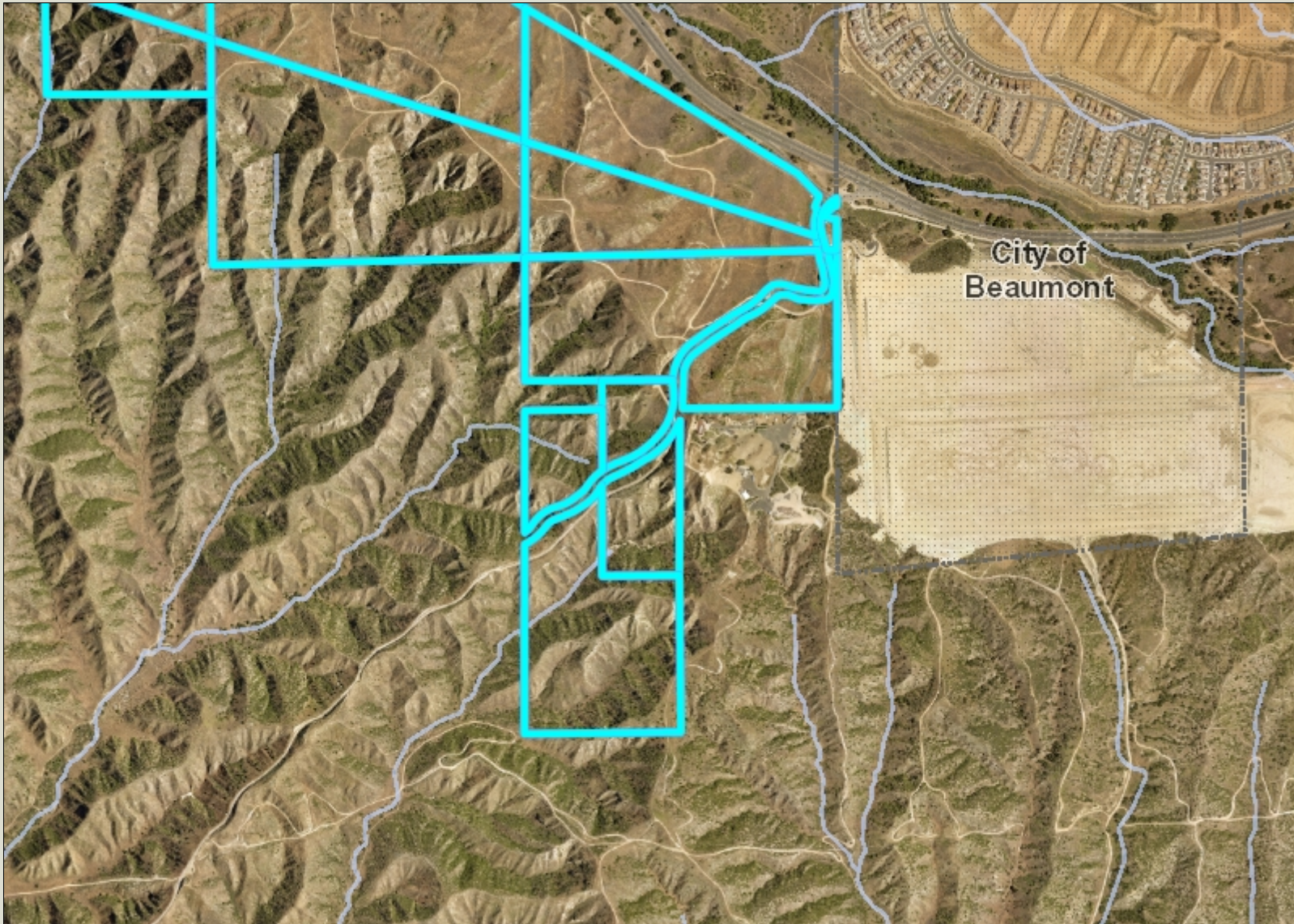
0 1, 3,079 Feet
539

REPORT PRINTED ON... 11/8/2023 2:46:44 PM

© Riverside County GIS

Beaumont Pointe

Aerial Photograph 3 of 3



Legend

- Blueline Streams
- City Areas
- World Street Map



IMPORTANT Maps and data are to be used for reference purposes only. Map features are approximate, and are not necessarily accurate to surveying or engineering standards. The County of Riverside makes no warranty or guarantee as to the content (the source is often third party), accuracy, timeliness, or completeness of any of the data provided, and assumes no legal responsibility for the information contained on this map. Any use of this product with respect to accuracy and precision shall be the sole responsibility of the user.

Notes

0 1, 3,079 Feet
539

REPORT PRINTED ON... 11/8/2023 2:44:53 PM

© Riverside County GIS