



RFP for Professional Services for

City of Beaumont

Climate Action Plan Update

Submitted by Raimi + Associates

June 1, 2023

Main Contact:

Eric Yurkovich, Principal

eric@raimiassociates.com

Direct: (510) 394-3715

1900 Addison Street, Suite 200

Berkeley, CA 94704

Main: (510) 666-1010

448 South Hill Street, Suite 512

Los Angeles, CA 90013

Main: (213) 599-7670

June 1, 2023

Grace Wichert
City of Beaumont
550 E. 6th Street
Beaumont, CA 92223

Subject: **Climate Action Plan Update for the City of Beaumont**

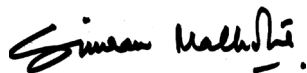
Raimi + Associates (R+A) is excited to present our team's proposal for the update to the City of Beaumont Climate Action Plan (CAP). Building on our successful General Plan collaboration, we see this as a great opportunity to help the City further articulate its climate and resiliency goals, and put in place a plan that identifies urgent needs, leverages opportunities for greatest impact, and satisfies State requirements.

Established in 2006, R+A is an award-winning multidisciplinary urban design, planning, policy, and research firm with offices in Los Angeles and Berkeley. Our staff of approximately 25 includes experts in planning, climate and sustainability, environmental justice, program evaluation, applied research, design, and community engagement.

Sustainability and climate change planning are one of the firm's core services. Since 2009, R+A has worked on dozens of climate action plan updates, climate vulnerability assessments, and corresponding General Plan updates. We have extensive experience developing and implementing inclusive and award-winning community engagement that meets people where they are and helps translate technical information into accessible materials. Our breadth of experience and work in Beaumont makes us uniquely qualified to assist the City with this CAP update. Additionally, David J. Powers will prepare all necessary and legally defensible CEQA documentation.

This proposal includes all the required information and forms identified in the RFP. If you should have any questions, please feel free to call us at your convenience. We look forward to hearing from you and discussing how we can work together on this exciting project.

Sincerely,



Simran Malhotra, VP & Principal
simran@raimiassociates.com

Direct: (213) 599-7671



Eric Yurkovich, Principal
eric@raimiassociates.com

Direct: (510) 394-3715

Introduction

Project Understanding

Raimi + Associates (R+A) understands that the City of Beaumont wants to work with a consultant to update their 2015 Climate Action Plan. R+A provides the qualifications and capability to perform the services sought by this RFP. Through a combination of evidence-based research and expertise, deep stakeholder engagement, and a focus on inclusion and diversity, R+A will assist the City in preparing a CEQA-qualified Climate Action Plan.

The updated CAP will reflect the City's climate progress and incorporate new relevant City policies including those from the General Plan update, offer revised strategies and incorporate a vulnerability assessment. Throughout this planning effort, it is essential to develop and implement strategies to engage the City's diverse community of stakeholders, including homeowners, residents, business owners, architects, and city staff. This can be done through a range of outreach techniques including interviews, surveys, working groups, roundtables, and community workshops.

Project Team

Raimi + Associates

Raimi + Associates (R+A) will serve as the project lead, ensuring that all subconsultants and tasks are moving in lockstep and meet the high standards and requirements of the City. R+A will lead the preparation of the CAP, technical analysis, and lead the community engagement process.

Raimi + Associates is an award-winning multidisciplinary urban design, planning, policy, and research firm founded in 2006 with offices in Los Angeles and Berkeley. Since our founding, we have served nearly a hundred communities in California and across the nation as trusted advisers, skilled practitioners, imaginative problem solvers, and effective communicators. We help communities achieve their long-term visions by listening to and learning from ordinary people, partnering closely with our clients, and relying on our keen eye for place. Our firm's planning, architecture, and urban design expertise is complemented and informed by our focus on public health, equity, sustainability, and program evaluation. To address the complexity of communities, R+A integrates a host of interrelated subjects — land use and design, sustainability and green building, public health and social equity, and public engagement and visioning — into planning and research efforts at a variety of scales.

Primary Contact

Eric Yurkovich, Principal
Raimi + Associates
Direct: (510) 394-3715
eric@raimiassociates.com

David J. Powers & Associates

David J. Powers & Associates, Inc. (DJP&A) is known for preparing clear, easy to understand documents that are legally defensible and informative to both the lead agency and public. DJP&A has a proven track record of delivering projects in a timely and cost-effective manner. We have over 50 years of experience preparing environmental review documents, including unparalleled experience assisting Cities with program-level evaluations of City-initiated planning efforts. As an example, DJP&A prepared the Santa Clara 2022 Climate Action Plan Addendum, San Jose 2030 Greenhouse Gas Reduction Strategy Addendum, 2021 Envision San José 2040 General Plan 4-year Review EIR Addendum, Mountain View East Whisman Precise Plan EIR, and the San José 2018 Downtown Strategy 2040 EIR.

Project Approach

The key components of the Raimi + Associates team's approach are:

- Clear articulation of the context and users for the plan
- Thorough background research on existing studies and resources
- Ongoing collaboration with City staff
- Integration of equity issues and concerns from the beginning of the process
- Authentic stakeholder engagement
- Technical analysis, modeling, and applied research to inform policy and program interventions
- Identification of emerging issues and innovations
- Emphasis on co- and multi-benefit strategies
- Creating a clear pathway for implementation
- User-informed design for the plan and communications materials

Our CAP philosophy centers on what we call "next-generation" climate action plans. First generation plans were focused on capturing all possible greenhouse gas emissions reductions and listed hundreds of recommended actions. Emissions reduction targets and

thresholds were locally determined, varied greatly across jurisdictions, and CAPs featured long lists of GHG reduction measures.

Second generation climate action climate action plans are focused on the measures that have the greatest impact on GHG reduction and are within cities' ability to implement. With the adoption of State GHG targets through SB 32, electricity emissions reduction requirements through SB 100, and guidance on long-term policy direction through the California Scoping Plan and EO-B-55-18 (carbon neutrality by 2045). Most cities now align their emissions targets with State policy to create more consistency among local governments and to benefit from the CEQA tiering benefits of a Qualified Plan. Rather than identifying several hundred climate measures or actions, second generation climate action plans focus on 4-5 sectors of GHG emissions (energy supply, building energy use, mobility, resource management, and natural systems) with 5-10 measures per sector. Detailed actions are then outlined in an implementation plan that includes tracking, monitoring, and reporting. This focused approach allows the City to target the most effective policy, program development, and implementation actions and to identify the sources of funding and finance needed to realize the plan objectives.

R+A uses standard project management tools to ensure that project tasks and deliverables are completed on time and within budget. These include maintaining an up-to-date schedule of tasks, deliverables, and key meetings that is reviewed weekly. We use Ajera accounting and time management software to track expenditures and staff time allocations. These tools, combined with frequent communication with City staff, enable us to track expenditures, manage staff time to ensure that tasks and the overall project stay within budget, and that sufficient staff resources are available to complete deliverables.

R+A has internal quality control systems to review technical analysis, narrative, and graphics to ensure high quality and accuracy for the services delivered. Materials are reviewed by the Project Manager before sending to clients. Client approval is required before any documents are released to the public in digital and/or printed formats.

We will establish a designated point of contact at R+A, typically the Project Manager, to communicate issues and/or questions and to coordinate tasks between the R+A team staff members. This approach has been effective in previous projects in providing a high level of responsiveness to City Staff. We use Teams for internal and external meetings with staff including those working remotely.

Given the breadth of expertise that our team can provide, we are able to take a flexible and creative approach to performing the services outlined in the Scope of Work.

Firm Profile

At **Raimi + Associates**, we are advocates, collaborators, organizers, and pioneers committed to creating healthy and enduring places. Over the years, we have served dozens of communities in California and across the nation as trusted advisors, skilled practitioners, imaginative problem solvers, and effective communicators. We help communities achieve their long-term visions by listening to and learning from ordinary people, partnering closely with our clients, and relying on our keen eye for place.

Our firm's planning and urban design expertise is complemented and informed by our focus on public health, equity, sustainability, and program evaluation. To address the complexity of communities, R+A integrates a host of interrelated subjects — land use and design, sustainability and green building, public health and social equity, and public engagement and visioning — into planning and social research efforts at a variety of scales. Our work focuses on six practice areas:

- **COMPREHENSIVE PLANNING**, including citywide general and comprehensive plans, community plans, TOD plans, and vision plans.
- **URBAN DESIGN + AREA PLANNING**, including specific plans, neighborhood plans, vision plans, urban design studies, form-based codes, design guidelines, zoning codes, and corridor plans.
- **PUBLIC HEALTH + EQUITY**, including health and environmental justice elements and policy, community wellness surveys, Health Impact Assessments (HIAs), Health in All Policies Initiatives (HiAP), and mapping and analysis.
- **SUSTAINABILITY + CLIMATE CHANGE**, including climate action plans, GHG emissions inventories, climate adaptation and resilience plans, LEED-H, LEED-ND, and LEED-CC certification, and sustainability policy and analysis.
- **ENGAGEMENT, COMMUNICATION + TECHNICAL ASSISTANCE**, including community engagement programs, meeting facilitation, policy/program strategy, skills training, branding, graphic design, and website design.

Whether it's updating a city's comprehensive plan, developing health and sustainability objectives, or generating a vision for a multi-jurisdictional corridor, we think holistically and examine the physical, environmental, health, and socioeconomic challenges of planning and design. This approach allows us to successfully develop, assess, and implement community plans, implementation programs, community outreach strategies, and policy framework for the cities and communities we work in.

Our firm has grown throughout the years, adding staff and new areas of expertise. We opened our Los Angeles office in 2009 and the company has expanded to 24 staff. We

have had the great fortune to have creative and talented staff who provide creativity, leadership, and stability to the company. Over the years our expertise and client base has also expanded significantly. We now have over 50 active projects and have worked for nearly 100 jurisdictions and clients, many of whom are repeat clients. The following provides more specific information on the company.

- **Legal Entity Name:** Raimi & Associates, Inc.
- **Federal EIN:** 20-4994828
- **Form of Business:** S-Corporation
- **Date Founded:** May 2006
- **Subsidiary to Large Entity:** No
- **Owner:** Matt Raimi, CEO and President
 - **Address:** 1900 Addison Street, Suite 200. Berkeley, CA, 94704
 - **Phone Number:** (510) 666-1010
- **Company Headquarters:** Berkeley, California
 - **Location:** 1900 Addison Street, Suite 200. Berkeley, CA, 94704
 - **Hours of Operation:** 9:00AM PST – 5:00PM PST
- **Los Angeles Office:** 448 South Hill Street, Suite 512, Los Angeles, CA 90014
 - **Contact:** 213.599.7670
- **Number of Employees:** 24

Firm Experience and Qualifications

South San Francisco General Plan and Climate Action Plan. Raimi + Associates led a comprehensive General Plan Update, Climate Action Plan, Zoning Code, and Environmental Impact Report for the City of South San Francisco. The Plan includes a Community Resilience Element that contains goals and policies to proactively advance community resilience, preparing the community for all hazards, including climate disruption, while ensuring a high-quality response and recovery from future disasters. The policies were built on a vulnerability assessment completed by R+A. Complete by R+A, the Climate Action Plan update included a communitywide greenhouse gas inventory, reduction analysis, and set of implementation measures to put the City on track to meet its goals. Engagement included numerous stakeholder meetings with developers and businesses. The City's wastewater treatment plant was included in the analysis. This project won the APA Northern California Chapter 2023 Award of Excellence for a Comprehensive Plan – Small Jurisdiction. R+A was the prime consultant, with Plan to Place, Strategic Economics, Lisa Wise Consulting, Fehr & Peers, First Carbon Solutions, and January Advisors as subconsultants.

- **R+A Team Members:** Eric Yurkovich, Sami Taylor, Wenhao Wu
- **Client:** Billy Gross, Principal Planner. Email: Billy.gross@ssf.net | Phone: (650) 877-8535
- **Timeline:** 2019-2022 | **Estimated Cost:** \$125,000 (CAP components only)

Ventura General Plan and Climate Action and Resilience Plan. R+A partnered with Rincon Consultants to prepare the City of Ventura Climate Action and Resilience Plan (CARP). As part of the Climate Vulnerability Assessment, R+A created a methodology to assess social vulnerability of the City's census block groups based on household, economic, housing/transportation, and race/ethnicity factors using Census data and other sources. The CARP presents recommended strategies and actions for the City to achieve the State's SB 32 greenhouse gas reduction target of a 40% reduction from 1990 levels and is on the pathway towards carbon neutrality by 2045. R+A led the community engagement, utilizing emerging trends in virtual engagement including interactive zoom workshops and online surveys and met with key stakeholders like the BIA. R+A also led the quantitative analysis including reviewing the existing GHG inventory data, developing GHG forecasts, and utilizing its GHG reduction tool to estimate the impact of potential mitigation measures on greenhouse gases.

- **R+A Team Members:** Eric Yurkovich, Robyn Wong, Sami Taylor, Juan Reynoso, and Wenhao Wu
- **Client:** Neda Zayer, Assistant Community Development Director. Email: nzayer@cityofventura.ca.gov | Phone: (805) 515-9119
- **Timeline:** 2020-2023 | **Estimated Cost:** \$190,000 (CARP components only)

City of Petaluma Climate Action Plan. Raimi + Associates is developing a Climate Action Plan (CAP). The CAP is Petaluma's program to reduce greenhouse gas emissions in line with the City's goal of carbon neutrality by 2030. The City's aggressive target requires creative problem solving, innovative solutions, and a high level of investment from the City and the community. R+A is developing detailed GHG reduction action implementation frameworks in the clean energy, buildings, transportation and land use, waste, water, sequestration, consumption, and municipal sectors. The CAAP also identifies sources of funding for implementation. The process includes 10+ meetings with the Climate Action Commission and several half-day workshops with City staff to refine and prioritize measures.

- **R+A Team Members:** Eric Yurkovich, Sami Taylor, and Robyn Wong
- **Client:** Christina Paul, Principal Planner Email: cpaul@cityofpetaluma.org | Phone: (707) 778-4367
- **Timeline:** 2021-present | **Estimated Cost:** \$175,000 (CAP components only)

Santa Clara Climate Action Plan. Raimi + Associates teamed with Cascadia Consulting and David J. Powers to prepare the City of Santa Clara's new Climate Action Plan (CAP).

R+A led the community engagement, utilizing emerging trends in virtual engagement including interactive zoom workshops and online surveys. R+A also led the quantitative analysis including reviewing the existing GHG inventory data, developing GHG forecasts, and utilizing its GHG reduction tool to estimate the impact of potential mitigation measures on greenhouse gas emissions to support the development and prioritization of strategies for the city. Most significantly, as part of the CAP process, the City's municipal utility, Silicon Valley Power (SVP), committed to deliver carbon-neutral electricity to its customers by 2030, ahead of the Renewable Portfolio Standard (SB 100) requirement.

- **R+A Team Members:** Walker Wells and Sami Taylor
- **Client:** Nimisha Agrawal, Senior Planner Email: NAgrowal@SantaClaraCA.gov | Phone: (408) 615-2467
- **Timeline:** 2020-2022 | **Estimated Cost:** \$81,000 (R+A only)

Kaua'i Climate Adaptation Plan. Raimi + Associates is developing a Climate Adaptation Plan for the County of Kaua'i. This project included technical analysis of the climate hazards facing the island and studied the exposure and the vulnerability of people, buildings, infrastructure, natural resources to them. R+A created an interactive map to illustrate the geographic applicability of climate hazards and socially vulnerable communities in multiple levels of detail. R+A is also conducting GHG forecasting and reduction measure analysis to help the County achieve 80% emissions reductions by 2045. R+A is the prime consultant, with subconsultants HR&A Advisors and Dr. Charles Fletcher.

- **R+A Team Members:** Eric Yurkovich, Ron Whitmore, Wenhao Wu, Sami Taylor, and Robyn Wong
- **Client:** Marie Williams, Long Range Planning Division Manager. Email: mwilliams@kauai.gov | Phone: (808) 241-4067
- **Timeline:** 2021-Present | **Estimated Cost:** \$500,000

In addition the above qualifications, R+A has participated in a number of relevant projects including:

- Beaumont General Plan Update, including greenhouse gas inventory and analysis for the EIR
- Western Riverside Council of Governments CAPtivate Project
- Western Riverside Council of Governments Energy Resilience Plan
- City of Beverly Hills Climate Action and Adaptation Plan
- City of Santa Monica Climate Vulnerability Assessment and CAAP
- City of San Luis Obispo Carbon Neutral Plan
- City of Marina Climate Vulnerability Assessment
- Gateway Cities Climate Adaptation Toolkit
- City of Hermosa Beach Carbon Neutral General Plan
- County of Santa Clara Sustainability Master Plan

- Huntington Beach Sustainability Master Plan
- Silicon Valley Clean Energy Policy Experiments
- West Hollywood CAAP Implementation
- Clean Power Alliance Technical Assistance
- County of Santa Clara Department of Public Health BRACE Curriculum
- City of San José Energy and Water Building Performance Ordinance
- City of Cupertino Electrification Reach Code
- City of Ventura Climate Action and Resilience Plan
- County of Los Angeles Sustainability Plan
- Silicon Valley 2.0

Location of Principal Office

Berkeley Office (Principal office responsible for this contract):

1900 Addison Street #200, Berkeley, CA 94704 | Direct: 510.666.1010

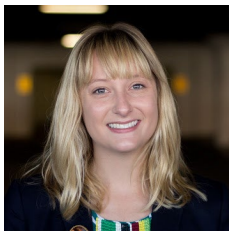
Proposed Team

Raimi + Associates

Eric Yurkovich | Principal | Project Manager



Eric will serve as project manager for the Beaumont CAP. He has 20 years of experience working across California on planning policy, analysis, and outreach for projects varying in size and scale. Eric is currently leading CAP development for South San Francisco, Petaluma, and Ventura and climate adaptation work in Kaua'i. He worked on the WRCOG CAPTIVATE project.



Sami Taylor, EcoDistricts AP | Senior Sustainability Planner | Deputy Project Manager

Sami will be the deputy project manager for this effort. She leads R+A's greenhouse gas technical analyses including developing inventories and forecasts and developing GHG mitigation measures and determining GHG reduction potential. Recently, she has worked on climate action plans for various cities including Beverly Hills, Petaluma, Ventura, South San Francisco, Palmdale, Santa Clara, Huntington Beach, and Thousand Oaks. She completed the greenhouse gas analysis for the Beaumont GPU EIR.



**Robyn Wong | Intermediate Climate Action and Resiliency Planner
| Key Staff**

Robyn Wong works on all aspects of climate action and adaptation plan development, including the preparation of GHG inventories, GHG reduction tool and measure analysis, hazard and social vulnerability assessment, community engagement, and plan drafting. Recent projects Robyn serves as key staff for are climate action and adaptation plans for WRCOG, Petaluma, Ventura, Beverly Hills, and Kaua'i.

David J. Powers & Associates



Shannon George | Principal Project Manager | Project Manager

Shannon George is a Principal Project Manager for DJP&A. She has 25 years of experience in preparing environmental documents for a wide range of public and private projects. Her project experience includes California Environmental Quality Act (CEQA) review of residential, commercial, and mixed-use development, General Plan Amendments, flood control, projects focusing on cultural resources and historic buildings, and program planning projects.

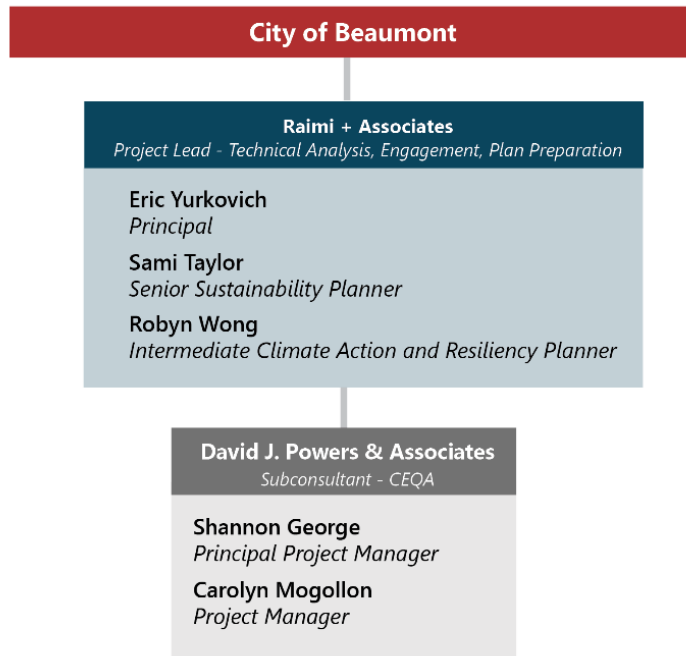


Carolyn Mogollon | Project Manager | Key Staff

Carolyn Mogollon is a Project Manager for DJP&A. She works closely with other members of the staff to research and prepare documents for both private and public sector projects, and coordinate with technical subconsultants to manage reports prepared for projects. Her experience includes CEQA compliance for office, mixed-use, and residential projects as well as planning policies.

Refer to Appendix A for staff resumes.

Organizational Chart



References

Reference Contact	R+A Project and Staff Members
<p>Billy Gross, Principal Planner City of South San Francisco Billy.gross@ssf.net (650) 877-8535</p>	<p><u>South San Francisco General Plan and Climate Action Plan</u> R+A Staff: Eric Yurkovich (Principal in Charge / Project Manager), Sami Taylor (Key Staff)</p>
<p>Neda Zayer, Assistant Community Development Director City of Ventura nzayer@cityofventura.ca.gov (805) 515-9119</p>	<p><u>Ventura General Plan and Climate Action and Resilience Plan</u> R+A Staff: Eric Yurkovich (Principal in Charge / Project Manager), Sami Taylor (Key Staff), Robyn Wong (Support Staff)</p>
<p>Marie Williams, Long Range Planning Division Manager County of Kaua'i mwilliams@kauai.gov (808) 241-4067</p>	<p><u>Kaua'i Climate Adaptation Plan</u> R+A Staff: Eric Yurkovich (Technical Lead), Robyn Wong (Key Staff), Sami Taylor (Support Staff)</p>

Scope of Work

The following is the Scope of Work for the City of Beaumont CAP. It builds off the concepts presented in the RFP and integrates the R+A team's approach to the project.

TASK 1. Project Initiation

Task 1.1: Project Kick-Off Meeting

The R+A team will hold a kick-off meeting with Beaumont to initiate the project. This meeting will be an overall team meeting and may include topic-specific meetings with City staff (greenhouse gas reduction, climate adaptation, CEQA, and community engagement). The team will review the scope of work and discuss project expectations related to coordination, reporting, deliverables, and other relevant project information.

- *Deliverables: Kick-Off Meeting Agenda, Presentation, and Meeting Summary*

Task 1.2: Project Work Plan

R+A will develop a project work plan / schedule broken out by scope task that specifies lead and supporting team members, key work elements, major deliverables, due dates, required City actions, estimated timelines for City staff review, and task status. The work plan will be a living document, updated throughout the CAP update process, and anticipate the document will be shared with the City through Microsoft Sharepoint. Updates to the project schedule will be completed each month throughout the project and will be reviewed during a standing check-in meeting.

- *Deliverables: Initial Project Work Plan, Updated Work Plan*

Task 1.3: Project Coordination

R+A will schedule regular meetings with City staff to discuss the status of the project and coordinate project activities. Meetings may occur biweekly depending on the phase of the project. Meetings will generally be virtual but may be in person on days with scheduled community engagement activities. We will also provide monthly status reports on the project. This task also covers "informal" communication via email and phone, up to the maximum budget.

- *Deliverables: Meeting Agendas and Meeting Summaries*

TASK 2. Community Engagement

Task 2.1: Community Engagement Plan

R+A will prepare an internal Community Engagement Plan (for use by staff and the consultant team) to clearly identify the proposed range of outreach tools and platforms and the timing and responsibilities related to each. The Community Engagement Plan will articulate an ongoing, multifaceted, and inclusive approach.

- *Deliverable: Community Outreach and Engagement Plan*

Task 2.2: Stakeholder and Public Agency Meetings

R+A will conduct up to six (6) virtual stakeholder meetings or interviews. Stakeholders will be identified with staff and may include City Council members, Planning Commission members, advocacy organizations, and community leaders. R+A will prepare a brief memorandum summarizing the results of the stakeholder interviews.



Additionally, R+A recognizes the importance of sharing resources and lessons and will hold joint meetings with State and County partner agencies. This will include two (2) meetings with regional / County agencies, such as WRCOG and Riverside County Emergency Services.

- *Deliverables: Meeting agendas, brief 2–4-page summary of stakeholder interviews.*

Task 2.3: Community Meetings

The R+A team will organize three (3) in-person and/or hybrid virtual community meetings to provide the community members and decision makers with basic knowledge focused on the CAP and to invite their input into shaping the project. These are expected to be evening or weekend meetings that last approximately 1.5 hours. Each workshop will include an opening presentation followed by interactive exercises. The initial proposed topic of each community meeting is below:

- **Workshop 1:** Issues, opportunities, and background information
- **Workshop 2:** Policy frameworks
- **Open House:** Public Review Draft Elements

Our team will develop the workshop format and prepare the agenda, consolidating and synthesizing relevant materials from the technical team when needed. We will also facilitate the workshop (lead facilitator and one assistant) and provide summary notes documenting input and identifying common discussion themes. City staff will be responsible for mailing, posting, and distributing flyers, securing meeting rooms, and providing small group facilitators as needed beyond consultant team members.



- *Deliverables: Presentation and meeting materials.*

Task 2.4: Outreach Materials

R+A will work with City staff to share regular updates via text or email with stakeholders involved in the process. R+A will provide outreach materials and updates for dissemination via flyer, newsletter, social media, or other existing city/local media. Outreach and engagement materials will be translated into Spanish if desired.

Task 2.5: City Council and Commission Meetings

R+A will prepare for and present at up to two City Council and/or Planning Commission meetings. R+A will prepare a brief slide show. City staff will provide the staff report.

- *Deliverables: Brief 20 slide presentation, and public hearing presentations.*

Task 2.6: City Staff and Executive Leadership Team Meetings

R+A will facilitate up to four City staff and executive team meetings during the process. Meetings include 1) review of the revised inventory (Task 3.1) and draft greenhouse gas reduction measures (Task 3.2 part 1); 2) review of the draft greenhouse gas reduction analysis (Task 3.2 part 2); 3) review of climate hazard exposures and work session on sensitivity and adaptive capacity; 4) and review of draft CAP. These are anticipated to be a mix of virtual and in person.

- *Deliverables: Meeting Agendas and Presentations*

TASK 3. Technical Analysis

Task 3.1 : Greenhouse Gas Inventory

Building on the 2018 greenhouse gas inventory prepared by R+A as part of the General Plan Update, we will prepare a community-wide greenhouse gas inventory for all sectors, including on-road transportation, building energy use, solid waste, off-road transportation, and water and wastewater (including the Wastewater Treatment Plan). R+A will develop the emissions inventory the most recent year for which emissions activity data is available and consistent with the General Plan, likely 2021 or 2022. R+A will use methods consistent with current best practices, including the U.S. Community Protocol for Accounting and Reporting of Greenhouse Gas Emissions, the Global Protocol for Community-Scale Greenhouse Gas Emission Inventories, the Local Government Operations Protocol, consistent with the City's existing inventories.

As part of the inventory, R+A will develop greenhouse gas emissions forecasts for the key regulatory years of 2030, 2040, 2045, and 2050. Greenhouse gas reduction targets will align with state goals as expressed in AB 32, SB 32, and Executive Order B-30-15, consistent with General Plan Goal 8.3.

R+A will compile results and methodologies into a draft GHG emissions inventory report. Following review by the City, R+A will complete a final GHG Inventory Report.

- *Deliverables: Admin Draft and Final GHG Inventory*

Task 3.2: Greenhouse Gas Reduction Analysis

As part of this effort, R+A will build on the City's existing CAP greenhouse gas reduction measures testing specific programs to reduce greenhouse gas emissions from direct emissions. As a first step, we will consolidate existing reduction measures into a single matrix, organized by reduction sector. The matrix will help us understand the existing reduction measures, identify new measures to incorporate into the CAP, and identify an initial level of implementation for each program (voluntary versus mandatory, timeline for implementation, etc.) in the reduction analysis. Once completed, we will facilitate a discussion with the appropriate City departments and staff to review / refine the matrix.

Using our internally developed Emissions Reduction Intensity Calculator, R+A will assess a range of measures, including carbon-free energy, decarbonized buildings, zero waste, fossil-fuel free transportation, and carbon sequestration.

Proven strategies for greenhouse gas emissions elimination will come from many sources, including the Carbon Neutral Cities Alliance, C40 CURB tool, and the Carbon-Free City Handbook, as well as our experiences developing CAPs designed to achieve deep greenhouse gas reductions. We will consider programs and policies that are both wholly

within the City and those that are subregional in nature (consistent with the WRCOG CAP), and that would require collaboration with other jurisdictions and regional organizations.





R+A will estimate the greenhouse gas reductions associated with the implementation of each measure and assess the ability of the CAP to achieve the City’s reduction targets. R+A will also identify potential co-benefits such as the impact on air quality, water quality, public health, economic development, employment opportunities, reduced urban heat island, and improved pedestrian and cyclist safety.

- *Deliverables: Admin Draft and Final GHG Reduction Analysis*

WRCOG Climate Action Plan: GHG Reduction Measures

The table below compares sample greenhouse gas (GHG) reduction measures that will be analyzed for the Western Riverside Council of Governments (WRCOG) Climate Action Plan. The measures are organized into five categories: Energy, Transportation, Solid Waste, Water and Wastewater, and Agriculture. Each measure includes estimated GHG reduction potential, cost effectiveness, and co-benefits. See discussion at end of table for more details on how these comparative measures were developed.

The GHG Reduction Potential and Cost-Effectiveness indicators are estimated as low, medium, or high. The co-benefits are summarized into four categories:

 Resilience
  Cost Savings
  Local Jobs
  Community Health

Measure	Description	GHG Reduction Potential	Cost-Effectiveness	Co-Benefits
ENERGY MEASURES				
E-1. Energy Efficient New Construction	Achieve higher efficiency for new residential and commercial buildings compared to minimum existing standard (i.e., Title 24)	High	High	Resilience, Cost Savings, Local Jobs, Community Health
E-2. Expand Local Solar PV Installations	Promote the installation of distributed, small-scale solar PV systems in existing buildings and new construction at commercial, residential and government properties.	High	High	Resilience, Cost Savings, Local Jobs, Community Health
E-3. Community Choice Energy	Join Western Community Energy, the region's Community Choice Aggregation (CCA) program, which lets local governments buy electricity directly from its source and then offers it to the community at a more competitive rate than SCE.	High	High	Cost Savings
E-4. Energy Efficient Retrofits	Improve the energy efficiency of existing buildings (residential, commercial, industrial, and government).	High	High	Resilience, Cost Savings, Local Jobs, Community Health
E-5. Traffic & Street Light Upgrades	Upgrade traffic signals and street light fixtures with LEDs or other high-efficiency bulbs.	High	High	Resilience, Cost Savings, Local Jobs, Community Health
E-6. Shade Trees	Plant additional shade trees to help lower peak load energy demands during the hottest months, sequester carbon dioxide, provide shade for parking lots and other paved areas, and reduce the urban heat island effect community-wide.	High	Low	Resilience, Community Health

Engagement Materials Prepared by Raimi + Associates for the WRCOG CAP / CAPTIVATE Project

Task 3.3: Climate Vulnerability Assessment

To meet the requirements of SB 379, R+A will review and refine the Resilient IE climate vulnerability assessment to support development of climate adaptation policies and actions. This will incorporate some of the findings in the City’s LHMP and scale them down to Beaumont and surrounding areas.

Based on initial analysis in the Resilient IE, R+A will briefly summarize historical and projected trends for temperature, precipitation, extreme heat, drought, flooding, wildfire, and air quality, among other climate hazards. Reporting will include: a short narrative description of the climate hazard; historical trends of the hazard; and projected trends of the hazard. These climate hazard descriptions will be supported by a variety of maps, charts, and other data, drawing on existing and on-going work conducted for the LHMP, as well as data compiled from CalAdapt, California’s 4th Climate Change Assessment, and

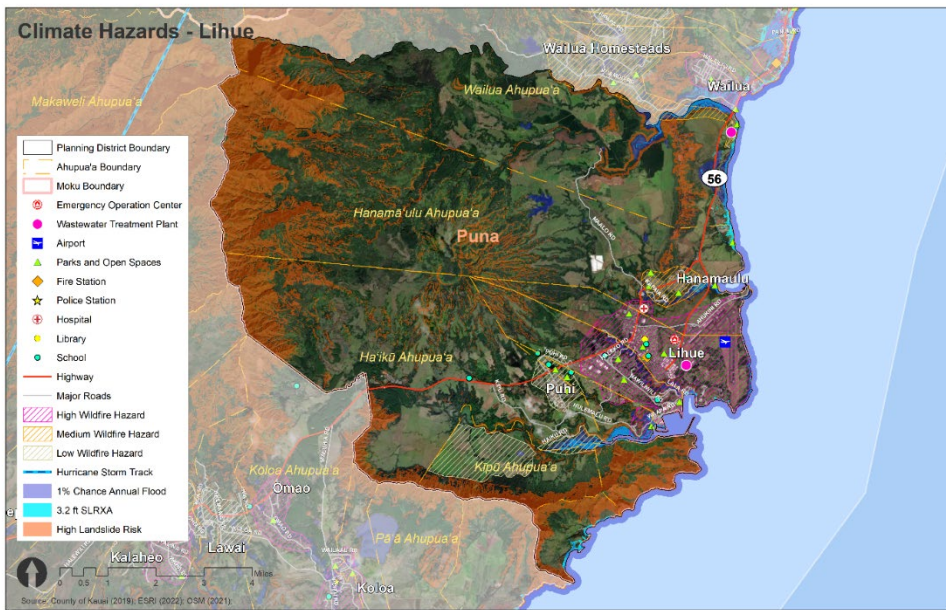
other sources as needed. Where the data is available, projected trend hazard data will include a mid-century and an end-of-century scenario.

After finalizing the climate hazard reporting, R+A will review and refine the vulnerability assessment to identify the populations and community assets that are vulnerable to the potential impacts of climate change. The vulnerability analysis will seek to uncover a broad range of direct and indirect climate impacts across key sectors, including infrastructure, buildings, natural systems, economic assets, and populations. The analysis will identify key sectors and their assets exposed to climate hazards, assess the sensitivity and adaptive capacity of each sector, and evaluate the vulnerability of each. This analysis will help Beaumont begin to define and prioritize adaptation policies and actions consistent with the requirements of SB 379.

Table 26: Summary Table of Sensitivity, Adaptive Capacity, and Vulnerability Ratings

Key Asset Categories	Sector	Sensitivity Rating	Adaptive Capacity Rating	Vulnerability Rating
Highest Vulnerability (Group 1)				
Buildings and properties in coastal zone	Buildings and Properties	High	Low	High
Roads and Parking	Infrastructure	High	Low	High
Ocean Habitat	Ecosystems and Habitats	High	Low	High
Santa Monica Pier	Economy	High	Low	High
Medium-High Vulnerability (Group 2)				
Parks	Buildings and Properties	High	Medium	Medium
Water Infrastructure	Infrastructure	High	Medium	Medium
Energy Supply and Infrastructure	Infrastructure	High	Medium	Medium
Urban Forests	Ecosystems and Habitats	High	Medium	Medium
Beach Habitat	Ecosystems and Habitats	High	Medium	Medium
Medium Vulnerability (Group 3)				
Schools	Buildings and Properties	Medium	Medium	Medium
General Population	Populations and Public Health	Medium	Medium	Medium
Vulnerable Population	Populations and Public Health	Medium	Medium	Medium
Water Supply	Infrastructure	Medium	Medium	Medium
Sanitary Sewer Infrastructure	Infrastructure	Medium	Medium	Medium
Stormwater Infrastructure	Infrastructure	Medium	Medium	Medium
Beach tourism and recreation	Economy	Medium	Medium	Medium
Businesses	Economy	Medium	Medium	Medium
Lowest Vulnerability (Group 4)				
City-service Buildings	Buildings and Properties	Medium	High	Low
Bicycle Infrastructure	Infrastructure	Medium	High	Low
Buildings and properties - generally	Buildings and Properties	Medium	Medium	Low
Local Energy Generation	Infrastructure	Medium	Medium	Low
Telecommunications	Infrastructure	Low	Medium	Low

Santa Monica Vulnerability Assessment Prepared by R+A



Climate Hazard Exposure Mapping by Raimi + Associates for the Kaua'i Climate Action Plan

Since the public health impacts from climate change vary across different neighborhoods and among individuals as generally identified in Resilient IE, Beaumont needs tools to identify areas with the highest exposure to climate impacts and the groups most likely to be affected by climate change. R+A will use our quantitative, data-driven methodology to evaluate the populations vulnerable to climate change within the city. Using locally relevant social-economic, demographic, and neighborhood data, we will classify vulnerability across neighborhoods (Census tract or block group scale) and use these analyses to develop an index for social vulnerability. This analysis is modular, rooted in our SB 1000 analysis and refined to key issues in Beaumont. The result will be a map which will be overlaid with climate exposure. This analysis will identify geographic areas within the city with higher levels of vulnerability.

- *Deliverables: Admin Draft and Final Climate Vulnerability Assessment Memo*

Task 4: Wastewater Treatment Plan Analysis

Building on the expertise of City's Wastewater Treatment Plant staff, R+A proposes the following process and overlapping tasks to complete the analysis and then develop more specific action steps for the treatment plant.

Task 4.1: Greenhouse Gas Emissions

Building on the communitywide greenhouse gas inventory in Task 3.1, R+A will evaluate greenhouse gas emissions from the City's Wastewater Treatment Plant. Using inputs from the Wastewater Treatment Plant related to digester gas, CH₄, and nitrifications, we will use the Local Government Operations Protocol to estimate emissions from the facility. This analysis will build on our experience conducting similar analysis or cities, such as Santa Clara and South San Francisco and may be included within the communitywide inventory at the discretion of the City.

Task 4.2: Climate Vulnerability Assessment

Using Resilient IE and the Beaumont climate vulnerability assessment as the starting point, R+A will work with Wastewater Treatment Plant staff to more specifically define the key vulnerabilities for the Wastewater Treatment Plant for both facilities and operation. Our approach would be to convene up to three (2-4 hour meetings) to uncover vulnerabilities, understand existing actions, and define and prioritize future action. Centering the expertise is the approach we successfully implemented with the City of Santa Monica on their vulnerability assessment. Steps are as follows.

- **Step 1:** Review exposures, sensitivities, and adaptive capacity. Working with staff, we will establish pathways by which climate change will impact facilities and operations, estimate the sensitivities of those assets and operations to adjust to

change, review opportunities for those assets and operations to change. Assume 4 hour working session.

- **Step 2:** Review ranking of vulnerabilities (developed in Step 1) and define initial actions associated with critical vulnerabilities. Assume 3 hour working session.
- **Step 3:** Prioritize actions and define next steps. Assume 2 hour working session.

R+A will provide background information and facilitate discussion with Wastewater Treatment Staff. City staff will be encouraged to include Treatment Plant staff, Public Works staff, and consultants working with them on facilities planning and upgrades.

Task 4.3: Wastewater Treatment Plant Action Plan

R+A will provide a brief write-up of the emission reduction and adaptation actions as defined in Task 4.1 and 4.2. This action plan can be included as part of the CAP, or as a separate appendix. The write-up will include both steps already being taken to reduce greenhouse gas emissions and to make the facility and operations more resilient to climate change and new steps over time.

- *Deliverables: Admin Draft and Final Action Plan, includes inventory, vulnerability assessment, and action plan.*

Task 5: Climate Action Plan Preparation

Task 5.1: Climate Action Plan Preparation

Building on the greenhouse gas inventory, community engagement, greenhouse gas reduction analysis, and vulnerability assessment, R+A will prepare the CAP for the City. R+A will work with City staff to ensure the CAP is usable and accessible by all.

The Climate Action Plan should strike a balance between being a technical document that is used on a day-to-day basis by City staff and elected and appointed officials to guide decision-making, and a visionary document used by the general public to understand the long-term vision and direction of Beaumont.

As determined in the scoping, the Climate Action Plan may include, but is not limited to:

- The vision for climate action.
- Quantitative goals and tracking metrics.
- Recent accomplishments and implementation actions related to climate and sustainability efforts.
- Connections from the Climate Action Plan to broader City implementation plans and policy goals in the General Plan, Downtown Revitalization Plan, Parking Management Plan, and more.
- Action plans for clean energy, buildings, transportation and land use, resource use, sequestration, and municipal actions.

R+A will prepare three versions of the Climate Action Plan, including an Administrative Draft CAP, Public Draft CAP, and post-adoption, Final CAP. The City should review each version of the CAP and provide one consolidated set of comments on each draft.

During the public review process, R+A will create a matrix to track public comments and recommended changes to the CAP. R+A will work collaboratively with City staff to finalized changes to the CAP.

Task 6: Environmental Analysis

Task 6.1 Complete CEQA Review

The Climate Action Plan would qualify as a project under the CEQA, requiring environmental review. Based on our understanding of the project and experience on similar projects, we believe the appropriate level of CEQA review for this project would be an Initial Study resulting in an Addendum to the 2040 General Plan EIR. DJP&A will prepare an Initial Study consistent with the requirements of CEQA and the City of Beaumont. The Initial Study/Addendum will include a cover sheet, table of contents, preface/introduction, a description of the project, brief overview of the environmental setting, discussion of consistency with applicable plans and policies, and discussion of the environmental impacts of the project based on the CEQA Appendix G Checklist.

Once the project description is finalized, DJP&A will prepare the Administrative Draft Initial Study (ADIS). Upon completion of the ADIS, DJP&A will submit an electronic copy of the document to the City for review and comment. DJP&A will then revise the ADIS based on comments received from the City and submit an electronic copy of the document to the City for final review and comment.

- *Deliverables: Admin Draft Initial Study and Final Initial Study.*

Project Schedule

Task	Month												
	1	2	3	4	5	6	7	8	9	10	11	12	13
	July	Aug	Sept	Oct	Nov	Dec	Jan	Feb	Mar	Apr	May	June	July
Task 1: Project Initiation													
1.1 Project Kick-off Meeting													
1.2 Project Work Plan													
1.3 Project Coordination													
Task 2: Community Engagement													
2.1 Community Engagement Plan													
2.2 Stakeholder and Public Agency Meetings													
2.3 Community Meetings													
2.4 Outreach Materials													
2.5 City Council and Commission Meetings													
2.6 City Staff and Executive Leadership Team Meetings													
Task 3: Technical Analysis													
3.1 Greenhouse Gas Inventory													
3.2 Greenhouse Gas Reduction Analysis													
3.3 Climate Vulnerability Assessment													
Task 4: Wastewater Treatment Plan Analysis													
4.1 Greenhouse Gas Emissions													
4.2 Climate Vulnerability Assessment													
4.3 Wastewater Treatment Plant Action Plan													
Task 5: Climate Action Plan Preparation													
5.1 Climate Action Plan Preparation													
Task 6: Environmental Analysis													
6.1 Complete CEQA Review													

Key

- General Task
- Engagement Task
- Public Comment

List of all Current R+A Contracts

Estimated % complete and estimated project conclusion year.

- **Seaside General Plan:** 90% complete, 2023
- **Castro Valley BD Specific Plan:** 25%, 2024
- **Honolulu PUC Downtown Plan:** 90%, 2023
- **EPA GIS:** 50%, 2023
- **Watsonville DT Specific Plan:** 100%, 2023
- **Firmin Court – Decro LEED:** 90%, 2023
- **Walnut Creek Design Guidelines:** 90%, 2023
- **Vista Ballona – CCSM LEED:** 90%, 2023
- **Islander – RCD LEED:** 75%, 2023
- **Culver City General Plan:** 75%, 2024
- **Thousand Oaks General Plan:** 75%, 2024
- **South San Francisco General Plan and CAP:** 100%, 2023
- **CCSM Lincoln Blvd / Pacific Landing LEED:** 90%, 2023
- **Santa Maria General Plan:** 66%, 2024
- **BART TOD and Anti Displacement Engagement:** 75%, 2024
- **BART R-Line Support:** 75%, 2024
- **Berkeley Objective Design Standards:** 50%, 2024
- **Sunnyvale Moffett Park Specific Plan:** 95%, 2023
- **Ventura General Plan:** 50%, 2024
- **Ventura CARP:** 95%, 2023
- **CCSM Las Flores LEED:** 95%, 2024
- **Ojai General Plan:** 66%, 2024
- **SF Sugary Drinks Distributor Tax Eval:** 75%, 2023
- **Legacy Square LEED:** 75%, 2023
- **3rd and Dangler LEED LEED:** 75%, 2023
- **Iris San Ysidro LEED:** 75%, 2023
- **San Pedro Lofts LEED:** 75%, 2023
- **Ravenswood RBD Specific Plan:** : 66%, 2024
- **Shalom Bayit Eval 2020_21:** 66%, 2023
- **Kite-Crossing LEED:** 50%, 2024
- **East Palo Alto 4 Corners Design Review:** 100%, 2023
- **East Palo Alto EPA Waterfront Design Review:** 100%, 2023
- **Thousand Oaks CEAP:** 95%, 2023
- **East Palo Alto Harvest Design Review:** 100%, 2023
- **East Palo Alto 2020 Bay Design Review:** 100%, 2023
- **Petaluma General Plan:** 40%, 2025
- **Petaluma CAAP:** 90%, 2023
- **Beverly Hills CAAP:** 90%, 2023
- **Kauai Climate Adaptation Plan:** 60%, 2024
- **SBCTA Equity Toolkit:** 90%, 2023
- **Palmdale Zoning Code:** 90%, 2023
- **Jordan Downs 3 LEED:** 50%, 2024
- **YFO Evaluation:** 25%, 2023
- **Milpitas Housing Element:** 90%, 2023

- **Milpitas Housing Overlay Zone:** 50%, 2023
- **Green Affordable Housing:** 80%, 2023
- **MAHEP:** 80%, 2023
- **HCD Housing Suitability:** 50%, 2023
- **Balboa Building LEED:** 5%, 2024
- **Sustain Hawaii Indigenuity:** 75%, 2023
- **MHSA Innovation SWAP:** 66%, 2023
- **West Hollywood Beverly Gathering:** 90%, 2023
- **Ventura Overlay Zones:** 90%, 2023
- **Lindenville Specific Plan:** 60%, 2023
- **SCAG Metro Joint Development:** 40%, 2024
- **Huntington Beach SMP:** 80%, 2023
- **Coachella Zoning Consistency:** 75%, 2023
- **915 Venice LEED:** 25%, 2025
- **BBG_CalVIP_eval:** 50%, 2023
- **State of CA Housing Scenario Analysis:** 50%, 2023
- **REACHeval_2022-25:** 10%, 2025
- **CCSI_fy2021-22eval:** 25%, 2023
- **Marina Objective Design Standards:** 10%, 2023
- **Marina General Plan:** 10%, 2025
- **SVCE Policy Experiments:** 35%, 2024
- **San Joaquin Valley REAP AFFH TA:** 90%, 2023
- **Natividad Strategic Plan:** 25%, 2023
- **SCC Food Waste Dashboards:** 90%, 2023
- **Metro Energy and Climate:** 25%, 2024
- **Coachella GP Amendment:** 75%, 2023
- **West Hollywood CAAP Implementation:** 25%, 2024
- **Clean Power Alliance Assistance:** 10%, 2024
- **Lime:** 50%, 2024
- **Santa Maria Objective Design Standards:** 10%, 2024
- **Monterey Health Dept Strategic Plan:** 10%, 2024
- **San Francisco CavityFree Eval Plan:** 25%, 2023
- **Culver City Zoning Code Update:** 10%, 2024
- **Santa Clara ECRSP Revisions:** 10%, 2024
- **Indio UDC implementation:** 10%, 2024

R+A carries professional liability insurance, excluding auto since we do not own vehicles, and has recently contracted with the City of Beaumont for the General Plan. R+A will purchase a business license as appropriate from the City.

Cost Proposal

Copies of the cost proposal are provided in the sealed envelopes.



ERIC YURKOVICH

PRINCIPAL

Eric Yurkovich has extensive experience working on planning policy, analysis, and outreach for clients across the country. Eric's work focuses on creating sustainable communities that offer alternatives to the automobile, reduce greenhouse gas emissions, protect natural resources and rural lands, and minimize risk from natural hazards. He specializes in land use and transportation planning, climate action and adaptation planning, and geographic information systems analysis.

KEY PROJECTS

EDUCATION

University of California, Los Angeles
Master of Arts in Urban Planning, 2010

Macalester College, St. Paul, MN
Bachelor of Arts, Geography, 2000

AFFILIATIONS

Member, American Planning Association

EXPERIENCE

Raimi+Associates
Berkeley, CA
Principal, 2012-present

National Oceanic and Atmospheric Administration/Pew Center on Climate Change
Oakland, CA
Climate Change Researcher, 2010-2012

Calthorpe Associates
Berkeley, CA
Senior Planner, 2002-2008

- **Ventura Climate Action and Resilience Plan (Ventura, CA)**
Project Manager. Led the development of a social vulnerability assessment, climate action measures, and community engagement for the Climate Action and Resilience Plan.
- **Kaua'i Climate Adaptation Plan (Kaua'i, HI)**
Project Manager. Led the development of an islandwide climate hazard and social vulnerability assessment for the Climate Adaptation Plan.
- **South San Francisco General Plan Update (South San Francisco, CA)**
Project Manager. Leading land use policy, climate adaptation, and public engagement for the General Plan Update.
- **Silicon Valley 2.0 (Santa Clara County, CA)**
Project Manager. Wrote public health strategies for a regional climate action plan to adapt to climate change. Created an assessment tool to evaluate the vulnerability of residents and workers to the heat- and air quality-related impacts of climate change.
- **Indio General Plan Update and Climate Action Plan (Indio, CA)**
Served as Project Manager leading the project recovery of a General Plan Update. Lead land use policy, environmental assessment and public engagement for the General Plan Update. Managed work plan, documentation and oversight of CEQA process.
- **Coachella General Plan (Coachella, CA)**
Contributed to the Sustainability and Health Chapters of the General Plan. Wrote Climate Action Plan, which analyzed General Plan land use, energy, solid waste, and water strategies compared to a business-as-usual scenario. Inventoried community emissions and estimated the co-benefits of General Plan policies.
- **Public Health and Climate Action Plan Implementation (Western Riverside Council of Governments, CA)**
Project Manager. Reconvened Sustainability / Health Subcommittee. Developed health indicators and targets to track CAP implementation. Created assessment tool to estimate health co-benefits of CAP measures. Assessed public health vulnerability to climate change.
- **Guide to Equitable, Community-Driven Climate Preparedness Planning**
Managed Urban Sustainability Director's Network project to develop a model to assist cities in their efforts to ensure equity is a cornerstone of climate preparedness planning. Drafted best practices and community collaboration tactics to address root causes of climate vulnerability. Facilitated convening of city leaders, climate justice organizations, and state and federal agencies.



SAMI TAYLOR, ECODISTRICT AP

SENIOR SUSTAINABILITY PLANNER

Sami Taylor has an extensive background in sustainable policy and planning and brings with her nearly ten years of experience in a variety of sectors including local government and private institutions. With experience spanning each component of sustainability, she has coordinated the implementation of various sustainability programs and community engagement efforts. Her skill set includes quantitative greenhouse gas analyses, community engagement, green building code amendments, technical assistance, and LEED for Homes and Neighborhood Development certification.

EDUCATION

University of Southern California, Los Angeles, CA

Master of Public Administration: Environmental Management and Land Use Policy, Certificate in Sustainable Policy and Planning

Oberlin College, Oberlin, OH
Bachelor of Arts: Environmental Studies & Geology

CERTIFICATIONS

EcoDistrict AP (CA, Green Building)

EXPERIENCE

Raimi + Associates
Los Angeles, CA
Senior Sustainability Planner,
2019-present

The Robert Group
West Hollywood, CA
Sustainability Planner

City of Arcadia
Arcadia, CA
Water Conservation Analyst

USC Office of Sustainability
Waste Diversion Coordinator

KEY PROJECTS

- **County of Santa Clara Greenhouse Gas Inventory (Santa Clara County, CA)**
Gathered, cleaned, and analyzed data to create 2019 and 2020 municipal greenhouse gas inventories to track operational emissions over time. Prepared inventory reports to communicate results and show progress toward Sustainability Master Plan goals.
- **City of Santa Clara CAP (Santa Clara, CA)**
Prepared GHG forecast and completed quantitative analysis to determine the strategies and level of implementation needed to achieve GHG reduction targets. Planned and conducted virtual community engagement including online surveys and interactive Zoom workshops and assisted in the preparation for Planning Commission and City Council Study Sessions.
- **Western Riverside COG Energy Resilience Plan (Riverside County, CA)**
Part of a team that is preparing recommendations for strategies to increase community resilience through strategic retrofits to civic facilities. Conducted a literature review of microgrids, battery installations, and neighborhood resilience hubs, developed the stakeholder engagement strategy, and prepared a series of equity-related facility evaluation metrics.
- **City of Petaluma CAAP (Petaluma, CA)**
Prepared the City's 2019 community and municipal GHG inventories and forecast. Developed detailed GHG reduction action frameworks in the clean energy, buildings, waste, and water sectors to achieve the city's aggressive reduction target of carbon neutrality by 2030. Coordinated with the General Plan Update to integrate climate priorities and policies in the process.
- **City of Ventura CARP (Ventura, CA)**
Prepared GHG forecast and completed quantitative analysis to determine the strategies and level of implementation needed to achieve GHG reduction targets. Planned and conducted virtual community engagement including online surveys and interactive Zoom workshops and assisted in the preparation for Planning Commission and City Council Study Sessions.
- **City of Beverly Hills CAAP (Beverly Hills, CA)**
Led the development of GHG mitigation measures and the technical analysis of the impacts of strategies across clean energy, buildings, transportation, water and wastewater, solid waste, and municipal sectors. Convened the citizen advisory committee to guide the CAAP development process.
- **City of Arcadia Water Conservation Program (Arcadia, CA)***
Program Manager. Guided the City and utility through the worst of the 2015-2017 drought with nuanced water management policies and conservation programs. Prepared annual Water Quality Reports and updated the Urban Water Management Plan to reflect evolving conditions.

*Denotes projects completed while serving as key staff at other organizations.



ROBYN WONG

INTERMEDIATE CLIMATE & RESILIENCY PLANNER

Robyn is a Climate Action and Resiliency Planner dedicated to helping communities and the natural environment thrive in the face of climate change. She brings a diverse range of experience in environmental and land use planning across local and state government, the non-profit sector, and academia.

KEY PROJECTS

- **Kaua'i Climate Adaptation Plan (Kaua'i, HI)**
Key staff conducting technical analysis, community engagement, project management, and drafting of the countywide adaptation plan. Conducted an islandwide climate hazard vulnerability assessment and social vulnerability assessment. Developing adaptation strategies for critical infrastructure, buildings, community capacity, and other sectors. Assisting with GHG reduction analysis and the development of climate mitigation measures.
- **Ventura Climate Adaptation and Resilience Plan (Ventura, CA)**
Key staff leading technical analysis and community engagement, and supporting the drafting of the plan. Conducted a social vulnerability assessment and assisted with GHG reduction analysis and mitigation measures. Coordinated engagement including surveys and open houses.
- **Western Riverside COG Energy Resiliency Plan (Riverside, CA)**
Analyzed the social vulnerability of census tracts around critical energy facilities to help identify case study facilities for a toolkit of energy resilience measures.
- **Beverly Hills Climate Action and Adaptation Plan (Beverly Hills, CA)**
Conducted social vulnerability analysis and developed adaptation measures for sectors including heat, wildfire, community education, and emergency preparedness.
- **Petaluma Climate Action and Adaptation Plan (Petaluma, CA)**
Prepared 2018 Community and 2019 Municipal GHG inventories and supporting the GHG reduction measure analysis. Developed detailed action plans for the City to achieve carbon neutrality by 2030 in sectors including municipal, waste/consumption, carbon sequestration.
- **Santa Clara County Building Resilience Against Climate Effects Leadership Academy (Santa Clara County, CA)**
Developed curriculum in partnership with community-based organizations in Santa Clara County for a Leadership Academy aimed at building CBO's organizational capacity to adapt to climate change impacts (heat, air quality, and wildfire). Held in-person and virtual working sessions with CBO partners to develop the Academy content, including presentations, activities, and a template for organizations to create their own Climate Preparedness Action Plan.
- **Multifamily Affordable Housing Electrification Program (Los Angeles, CA)**
Conducted outreach with local affordable housing developers to encourage participation in a rebate program to electrify gas appliances at developments near refineries and peaker power plants.
- **County of San Diego Electric Vehicle Roadmap (San Diego County, CA)***
Co-wrote the plan to increase electric vehicle adoption and charging infrastructure development for County operations and the unincorporated communities in accordance with the 2018 Climate Action Plan.

*Denotes projects completed while serving as key staff at other organizations.

EDUCATION

University of California, Los Angeles
Los Angeles, CA
Master of Urban and Regional
Planning, 2021

University of California, San Diego
La Jolla, CA
Bachelor of Arts in Urban Studies and
Planning, 2017

AFFILIATIONS

American Planning Association

EXPERIENCE

Raimi + Associates
Los Angeles, CA
Intermediate Planner
2021-present

Climate Resolve
Los Angeles, CA
Intern

CA Strategic Growth Council
Sacramento, CA
Land Conservation Intern

UCLA xLAB
Los Angeles, CA
Research Assistant

County of San Diego
San Diego, CA
Junior Land Use/Environmental
Planner, Sustainability
Land Use Aide, Zoning

Shannon George

Principal Project Manager



Office: (408) 248-3500 x102
Direct: (408) 454-3402
Email: Sgeorge@davidjpowers.com

1871 The Alameda, Suite 200
San José, CA 95126
www.davidjpowers.com



Shannon George is a Principal Project Manager for the company. She has 25 years of experience in preparing environmental documents for a wide range of public and private projects. Her project experience includes CEQA review of residential, commercial, mixed-use development, General Plan Amendments, area plans, flood control, and projects focusing on cultural resources and historic buildings, and program planning projects.

As a Principal Project Manager, Ms. George:

- Provides management and oversight in preparation of environmental documents by others, ensuring defensibility and consistency. Ms. George ensures that all documents reflect the best available technical expertise.
- Researches and prepares environmental documents required under Federal and California laws including Environmental Impact Reports (EIRs) and Environmental Impact Statements, Environmental Assessments, and Initial Studies (IS). Ms. George is responsible for the entire project life cycle, from proposal development through report delivery and client support.

Education

B.S. Environmental Studies

San José State University, 1996

Experience

Principal Project Manager

David J. Powers & Associates,
2017-present

Senior Project Manager

David J. Powers & Associates,
2001-2017

Project Manager

Jones & Stokes Associates,
1999 - 2001

Operations Analyst

P-Com, Inc.,
1997 - 1999

Professional Organizations

Association of Environmental
Professionals

California Preservation
Foundation

Relevant Project Experience

- City of Santa Clara 2022 Climate Action Plan – Santa Clara
- City of San José Four-Year General Plan Update – San José
- Santa Clara Downtown Precise Plan – Santa Clara
- El Camino Real Specific Plan – Santa Clara
- North Ventura Coordinated Plan Area – Palo Alto
- San José Downtown Strategy Plan 2040 – San José
- Santa Clara 2010-2035 General Plan EIR – Santa Clara
- North Ventura Coordinated Plan Area EIR – Palo Alto
- Emergency Interim House Project – San José

Carolyn Mogollon

Project Manager

Office: (408) 248-3500 x137
Direct: (408) 454-3437
Email: Cmogollon@davidjpowers.com



1871 The Alameda, Suite 200
San José, CA 95126
www.davidjpowers.com



Carolyn Mogollon is a Project Manager for the company. She works closely with other members of the staff to research and prepare documents for both private and public sector projects, and coordinate with technical subconsultants to manage reports prepared for projects. Her experience includes CEQA compliance for office, mixed-use, and residential projects as well as planning policies.

As a Project Manager, Ms. Mogollon:

- Prepares environmental documents including: Environmental Impact Reports (EIRs), Initial Studies, and Environmental Assessments, in conformance with the requirements of CEQA and NEPA.
- Provides detailed analysis of potential environmental impacts, identifies mitigation measures, and develops alternative solutions.
- Provides project coordination including maintaining close communication with client and/or agency staff, gathering and compiling project and site information, managing subconsultants, and project scheduling.

Education

Master of Urban Planning

San Jose State University, 2019

B.A. Environmental History

University of California at Berkeley, 2016

Experience

Project Manager

David J. Powers & Associates,
November 2019 - Present

Associate Environmental Planner

Rincon Consultants, Inc.,
2018 -2019

Planning Intern

County of Santa Clara,
2017

Professional Organizations

American Planning Association (APA)
Association of Environmental Professionals (AEP)

Relevant Project Experience

- Santa Clara Climate Action Plan Update IS/Addendum (Santa Clara)
- Mountain View Downtown Precise Plan Update (Mountain View)
- Google Middlefield Park Master Plan (Mountain View)
- San Jose GHG Reduction Strategy Amendment (San Jose)
- Teal Club Specific Plan Revised EIR (Oxnard)
- Novato General Plan EIR (Novato)
- Adeline Corridor Specific Plan EIR (Berkeley)
- Redwood City General Plan EIR Addendum (Redwood City)
- Morro Bay General Plan EIR (Morro Bay)

Raimi + Associates Budget Estimate

Hours per Task	Raimi + Associates				David J Powers & Associates			Total	
	Principal (Yurkovich)	Planner, Senior GIS (Taylor, Wu)	Inter. Planner (Wong)	Graphics (Ledezma)	Principal (George)	Project Manager (Mogollon)	Graphic Artist	Labor Hours Per Task	Labor Cost Per Task
Task 1: Project Initiation									
1.1 Project Kick-off Meeting	8	8	8		1	1		26	\$ 5,555
1.2 Project Work Plan	12	12						24	\$ 5,520
1.3 Project Coordination	20	40	20		8	8		96	\$ 20,420
Subtotal Task 1	40	60	28	-	9	9	-	146	\$ 31,495
Task 2: Community Engagement									
2.1 Community Engagement Plan	4	8	8					20	\$ 3,940
2.2 Stakeholder and Public Agency Meetings	8	8	8					24	\$ 5,040
2.3 Community Meetings	24	36	60	60				180	\$ 30,060
2.4 Outreach Materials	4	8	8	16				36	\$ 5,700
2.5 City Council and Commission Meetings	16	16						32	\$ 7,360
2.6 City Staff and Executive Leadership Team Meetings	16	16	16					48	\$ 10,080
Subtotal Task 2	72	92	100	76	-	-	-	340	\$ 62,180
Task 3: Technical Analysis									
3.1 Greenhouse Gas Inventory	8	24	48					80	\$ 14,800
3.2 Greenhouse Gas Reduction Analysis	16	40	40					96	\$ 18,600
3.3 Climate Vulnerability Assessment	16	24	60					100	\$ 19,040
Subtotal Task 3	40	88	148	-	-	-	-	276	\$ 52,440
Task 4: Wastewater Treatment Plan Analysis									
4.1 Greenhouse Gas Emissions	2	4	8					14	\$ 2,650
4.2 Climate Vulnerability Assessment	24	24	60					108	\$ 21,240
4.3 Wastewater Treatment Plant Action Plan	16	8	40					64	\$ 12,680
Subtotal Task 4	42	36	108	-	-	-	-	186	\$ 36,570
Task 5: Climate Action Plan Preparation									
5.1 Climate Action Plan Preparation	40	100	140	40				320	\$ 57,700
Subtotal Task 5	40	100	140	40	-	-	-	320	\$ 57,700
Task 6: Environmental Analysis									
6.1 Complete CEQA Review					18	60	6	84	\$ 18,876
Subtotal Task 6	-	-	-	-	18	60	6	84	\$ 18,876
Total Hours	234	376	524	116	27	69	6	1,352	
Billing Rate	\$275	\$185	\$170	\$110	\$304	\$211	\$124		
Labor Cost	\$64,350	\$69,560	\$89,080	\$12,760	\$8,208	\$14,559	\$744		
Total Firm Labor Cost				\$235,750		\$23,511			\$ 259,261
EXPENSES									
Project/Sub Management (7%)				\$1,646			\$0		\$ 1,646
Printing				\$1,000			\$975		\$ 1,975
Travel				\$2,500			\$0		\$ 2,500
Office Expenses (3%)				\$7,073			\$146		\$ 7,219
Total Expenses				\$12,219		\$1,121			\$13,340
TOTAL PER FIRM				\$247,969		\$24,632			
GRAND TOTAL				\$272,601					