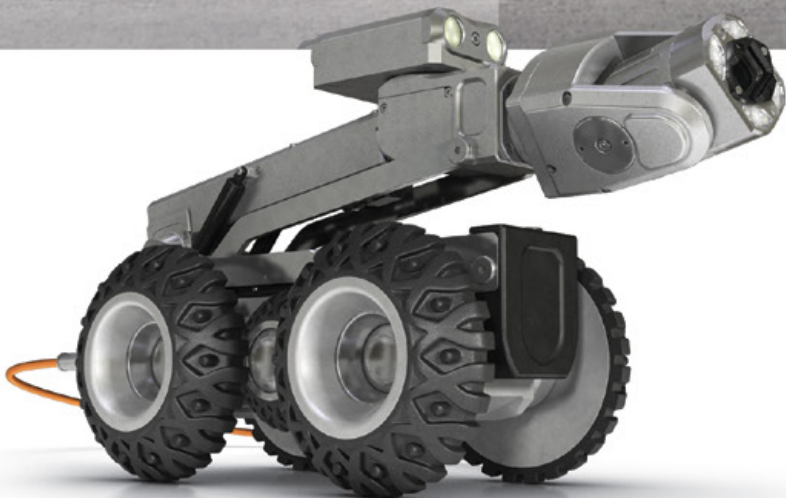


# ROVVER X

AGILE, INTELLIGENT  
SEWER INSPECTION  
SYSTEM



ENVIROSIGHT



ENVIROSIGHT



# GAIN DEEPER INSIGHT

When you open a manhole, be ready to get the full picture.

With unmatched power and agility, ROVVER X delivers the insight you need to make critical maintenance decisions. It offers industry-leading productivity with a simple interface, advanced capabilities and support for digital workflows.



## SIMPLE

Cut out complexity for your crew with technology that's easy to learn and use, a responsive support team, and a regional service network that delivers rapid turnaround.



## RELIABLE

Stay on schedule and within budget with ROVVER X's industry-low downtime and cost-of-ownership. Not only is it built to endure punishment, its intuitive design lets you perform routine maintenance right in the field.



## ADAPTABLE

Tackle any inspection challenge. ROVVER X accessories and wheels swap in seconds to fit any pipe size, material and condition. And when the job calls for specialized capabilities, easily add lateral launch, laser profiling, side scanning and more.



## AGILE

Power past obstacles that sideline other crawlers. With steerable six-wheel drive, ROVVER X avoids obstructions and climbs over debris and offsets. An array of onboard sensors helps you avoid hazards.



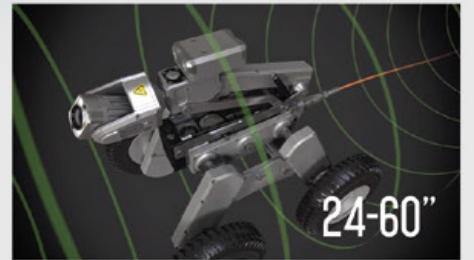
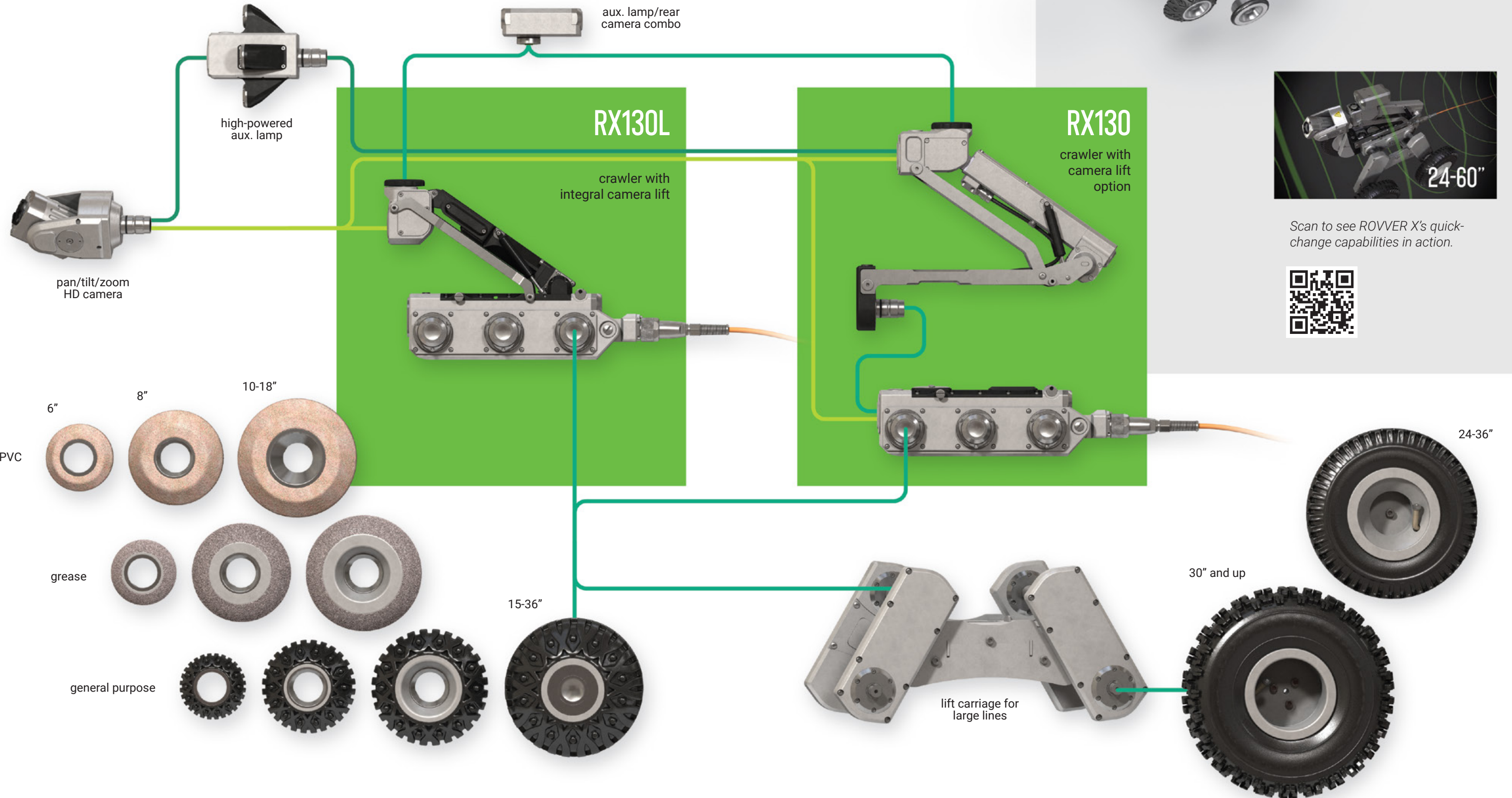
## SMART

Access every capability from a single interface—operate the crawler, record video, overlay text, log observations, measure defects and create reports. Inspection data streams securely to the cloud, and the system auto-updates to the latest features.



# ADAPTABLE

ROVVER X is the only crawler system that lets you change wheels and accessories rapidly without tools. Achieve new levels of productivity, and confidently handle any combination of pipe size, material and condition.



Scan to see ROVVER X's quick-change capabilities in action.





# SMART

Simple to learn yet powerfully capable, ROVVER X's touchscreen controls support your entire inspection workflow. And with built-in Wi-Fi, you can share inspections online and keep your ROVVER X system updated with the latest features.



Flexspection only available on VC500 HD controller.

## FLEXSPECTION

Sometimes you need maximum detail, sometimes you need minimum file size—and sometimes you need a compromise. With Flexspection, the choice is yours.



## NEED LESS?

This remote control puts all major crawler and reel functions in the palm of your hand, and it comes standard with every ROVVER X system.



## NEED EVEN MORE?

For maximum productivity, this optional desktop command center offers precision control, full QWERTY keyboard, and ergonomic comfort.



## OPERATE

Control every ROVVER X function using twin multi-function joysticks, intuitive touchscreen controls and real-time feedback. Onscreen notifications help warn against operating hazards.

## OVERLAY TEXT

With drag-and-drop simplicity, create an overlay that has static text, live data, observation details and your logo. Customize text position, color and background to your preference.

## MEASURE DEFECTS

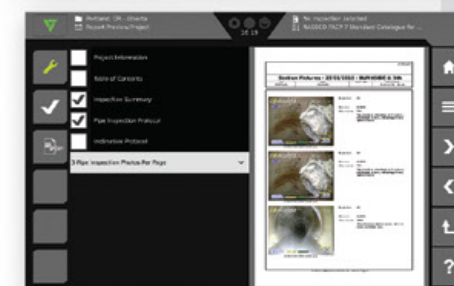
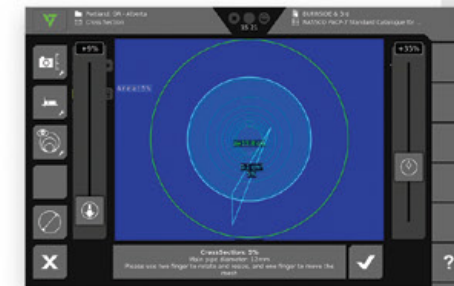
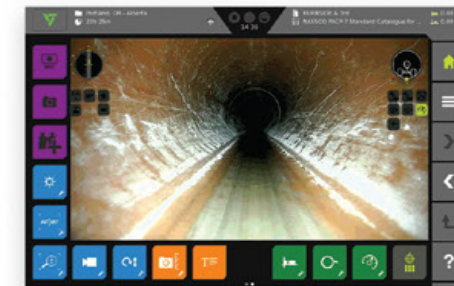
Powerful measurement tools let you size up cracks, water level, pipe diameter, wall features, bend angles, inclination and much more.

## ENTER OBSERVATIONS

Create an inspection, then log observations with help from onboard defect catalogs, including PACP and WRc.

## CREATE REPORTS

Generate PDF reports from completed inspections, then deliver them via USB drive.



## CONNECTED

Wirelessly upload your inspections directly to WinCan Web, the cloud platform for sewer inspection data. Review, edit, analyze and map inspection data online, and securely share results with your entire team.



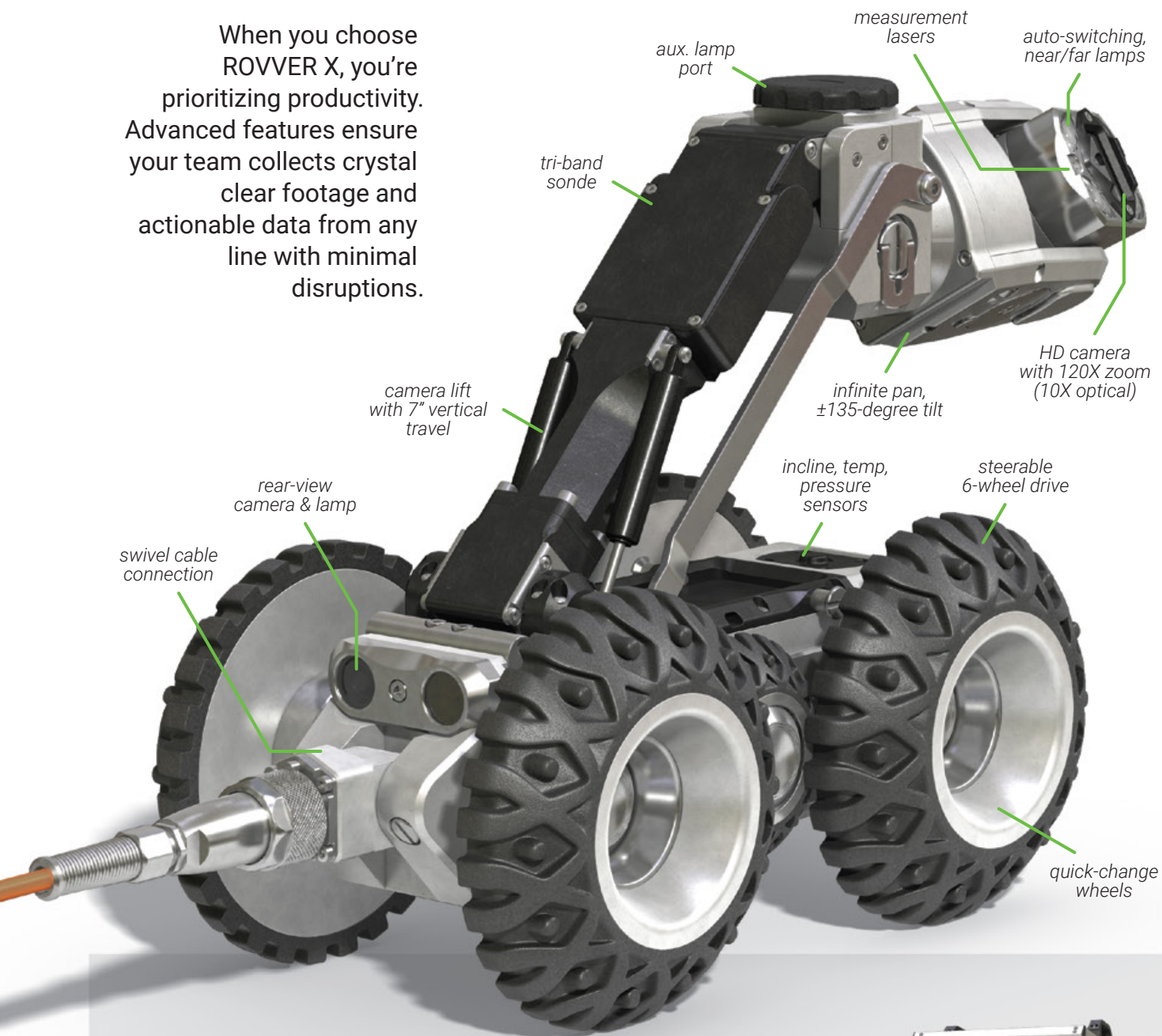
Scan to set up your free WinCan Web trial account:



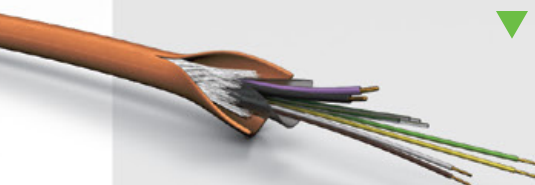


# CAPABLE

When you choose ROVVER X, you're prioritizing productivity. Advanced features ensure your team collects crystal clear footage and actionable data from any line with minimal disruptions.



The rugged **ROVVER X cable** boasts a 1000-lb break strength. And with just 6 conductors, it's easy to field-reterminate.

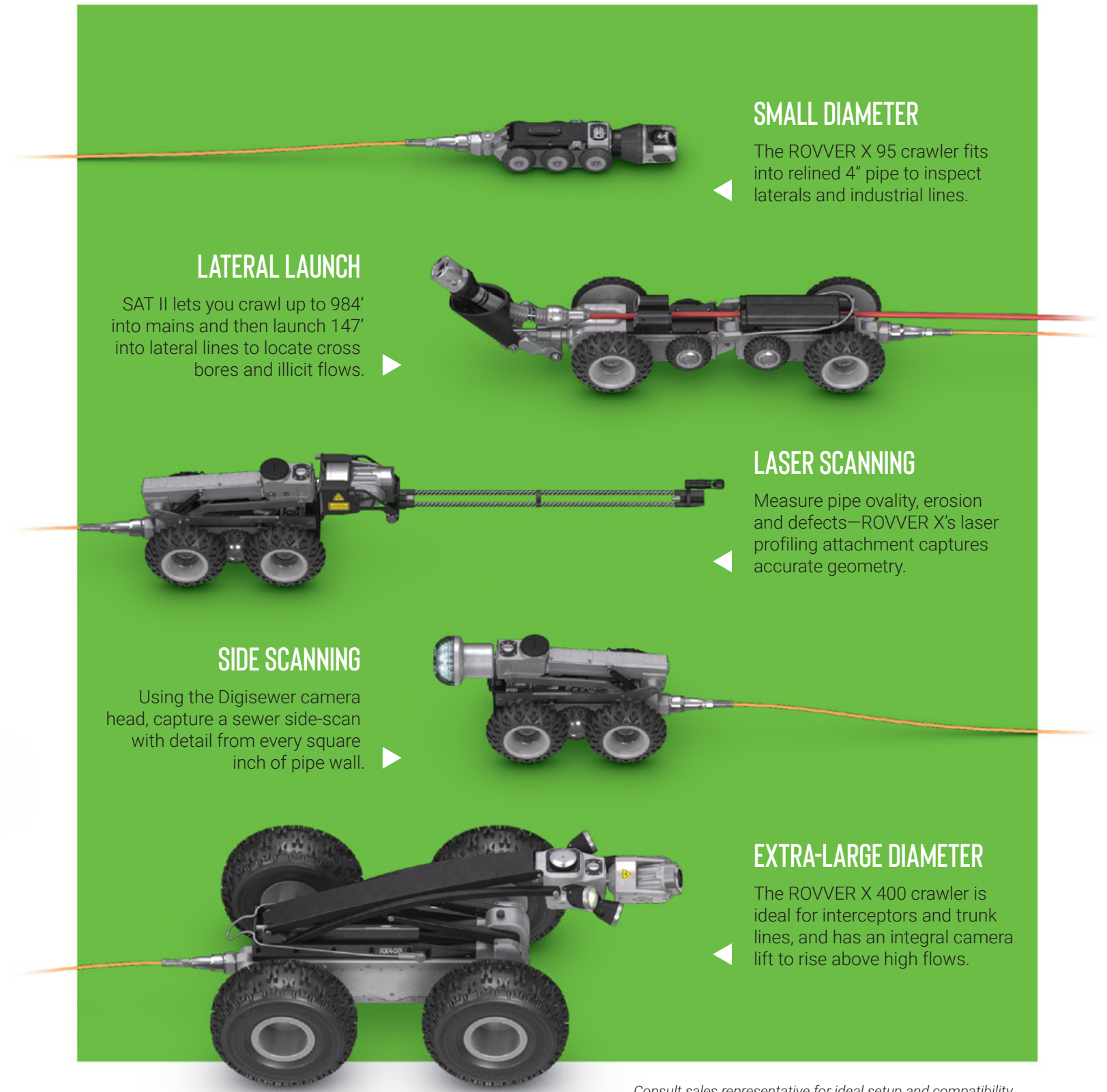


Available in 984' and 1640' versions, the **ROVVER X reel** automatically feeds cable so the crawler doesn't have to pull it off the reel. This extends travel range and reduces crawler wear-and-tear.



# SCALABLE

Once you own the ROVVER X platform, the sky is the limit. Specialty crawlers and attachments give you plug-and-play capability, so you can meet any inspection challenge.



## SMALL DIAMETER

The ROVVER X 95 crawler fits into relined 4" pipe to inspect laterals and industrial lines.

## LATERAL LAUNCH

SAT II lets you crawl up to 984' into mains and then launch 147' into lateral lines to locate cross bores and illicit flows.

## LASER SCANNING

Measure pipe ovality, erosion and defects—ROVVER X's laser profiling attachment captures accurate geometry.

## SIDE SCANNING

Using the Digisewer camera head, capture a sewer side-scan with detail from every square inch of pipe wall.

## EXTRA-LARGE DIAMETER

The ROVVER X 400 crawler is ideal for interceptors and trunk lines, and has an integral camera lift to rise above high flows.

Consult sales representative for ideal setup and compatibility.



# MOBILE

Stay safe, productive and comfortable while deploying your ROVVER X in the field. Envirosight-built vehicles protect your crew and offer full amenities—ensuring your equipment, tools, and safety gear are within easy reach.



## PANEL VANS

Fit into alleys and other tight spaces while deploying ROVVER X or lateral launch. Choose among Sprinter, Transit and ProMaster options, with power from an inverter or vehicle PTO.

*Power options include generator (gas or diesel), inverter with battery, or engine PTO.*

## BOX TRUCKS

Get maximum elbow room, plus extra capacity for lateral launch systems, generator power sources and cranes.



## TRAILERS

Gain flexibility when inspection is part time or when inspection equipment must be shared between crews.



## ENCLOSURES

Deploy an Envirosight Outpost when you need access to easements and other remote worksites using a pickup or ATV.



# TRUSTED

Standing behind ROVVER X is a team with decades of experience helping sewer professionals succeed. We've built the industry's largest network of regional support and service locations—so wherever the job takes you, help is never far.



**Don't take our word for it.** Some of the largest cities and contractors trust ROVVER X. Scan to read their stories.



## LOCAL PRESENCE

Success in our industry is a ground game. That's why we have systems, parts inventory and capabilities strategically deployed nationwide, ready for you on demand.

## WARRANTY

ROVVER X is backed by one of the industry's most comprehensive warranties. Optional maintenance plans and extended warranties offer further cost predictability. And with more than 25 factory-certified service centers across North America, we're never far when you need help.

## TRAINING

Your operators will be productive out of the gate with on-site training from certified ROVVER X instructors. Not only do we cover equipment care, operation and safety, we're available to provide PACP training, too. Need virtual training? We deliver it on demand from a fully equipped studio.

## TURNAROUND

Gain access to our comprehensive online parts portal, where in-stock orders placed before 3:00 pm ship the same day, with next-day delivery available. And when unique challenges require unique capabilities, know that rental gear is available from 23 locations across the continent.

**5000+**  
crawler systems  
worldwide

**46**  
locations in  
North America

**4%**  
average yearly  
cost of ownership  
compared to purchase price

**4000'+**  
average distance  
inspected per day  
per crew

# SPECIFICATIONS

## system

ratings . . . . . CE, NRTL  
 power . . . . . 120-240 Vac, 60 Hz  
 viewing capability . . . . . pipelines 4–96" dia.  
 operating temp . . . . . 32 to 104°F  
 storage temp . . . . . -4 to 158°F

## camera (RCX90 HD)

sensitivity . . . . . 0.05 lux  
 resolution . . . . . 1920 x 1080 pixels  
 zoom lens . . . . . 120x (10x optical, 12x digital)  
 pressure rating . . . . . 1 bar  
 protection class . . . . . IP68  
 features . . . . . auto shutter; auto/manual focus  
 illumination . . . . . dimmable LED, dual mode  
 articulation . . . . . ±135 deg tilt; infinite pan  
 measurement . . . . . twin laser diodes spaced 1.97"  
 sensing . . . . . temperature, pressure, pan/tilt  
 size . . . . . 6.6"x3.2"x2.8" (168x81x72 mm)  
 weight . . . . . 3.3 lb (1.5 kg)  
 materials . . . . . aluminum, stainless steel

## crawler (RX130 HD, RX130L HD)

drivetrain . . . . . steerable 6-wheel drive  
 turn radius . . . . . down to 0.0"  
 camera . . . . . color rear-view with tri-LED lamp  
 sensors . . . . . pitch, roll, temperature, pressure  
 pressure rating . . . . . 1 bar  
 protection class . . . . . IP68  
 size (130) . . . . . 12.2"x4.3"x3.5" (310x110x90 mm)  
 size (130L) . . . . . 15.1"x5.0"x4.6" (384x126x117 mm)  
 weight (130) . . . . . 13.2 lb (6 kg)  
 weight (130L) . . . . . 17.6 lb (8 kg)  
 lift range (130L) . . . . . 7.1" (180 mm)  
 materials . . . . . aluminum, stainless steel  
 sonde transmitter . . . . . 33kHz/512Hz/640Hz

## control pendant (VC500 HD)

controls . . . . . joysticks, touchscreen, power, stop  
 touchscreen . . . . . 10.1" color TFT, multi-touch,  
 . . . . . 1280x800 px, 1280 cd/m², 150-deg view angle  
 video capture . . . . . MPEG-4 AVC (H.256)  
 image capture . . . . . JPEG or PNG  
 internal storage . . . . . 128 GB  
 connectivity . . . . . LAN, USB 2, USB 3, Wi-Fi, HDMI  
 protection class . . . . . IP55  
 size . . . . . 11.8"x10.5"x2.8" (300x267x71 mm)  
 weight . . . . . 4 lb (1.81 kg)  
 housing . . . . . plastic (ABS, PC), IP55-rated

## auxiliary lamp (RAL200 HD, optional)

forward illumination . . . . . twin tri-LED lamps  
 camera . . . . . color rear-view with tri-LED lamp  
 sonde transmitter . . . . . 33 kHz / 512 Hz  
 protection class . . . . . IP68  
 dims . . . . . 2.8"x1.3"x4.0" (72x33x102 mm)  
 weight . . . . . 1.3 lb (0.6 kg)  
 materials . . . . . aluminum, stainless steel



explosion-proof  
 models available

## cable reel (RAX300 HD)

cable length . . . . . 984' (300 m)  
 cable diameter . . . . . ¼" (6.5 mm)  
 cable weight . . . . . 0.03 lb/ft  
 cable strength . . . . . 1000 lb  
 cable conductors . . . . . 6  
 controls (local) . . . . . power, emergency stop  
 controls (via pendant) . . . . . auto/manual, speed,  
 . . . . . forward/reverse, pull strength  
 sensors . . . . . tension, tilt  
 size . . . . . 24.6"x14.5"x22.6" (625x368x575 mm)  
 protection class . . . . . IP44  
 weight . . . . . 123.4 lb (56 kg)  
 connections . . . . . pendant, service, video in/out

## camera lift (optional)

lift range . . . . . 7.1" (180 mm)  
 materials . . . . . aluminum, stainless steel

## carriage (optional)

wheelbase (w/l) . . . . . 14.5"/12.2" (368/310 mm)  
 weight . . . . . 34.2 lb (15.5 kg)  
 materials . . . . . aluminum, stainless steel

# TYPICAL SYSTEM

- RX130 HD crawler body
- RCX90 HD camera head
- RAX300 HD reel with 984' cable
- VC500 HD control pendant
- WinCan VX software (basic)
- handheld wireless remote control
- assortment of wheels
- transport case(s)
- tools



Request a FREE  
 On-site Demo



www.envirosight.com • (866) 936.8476

©2022 Envirosight, LLC. All rights reserved.  
 Specifications subject to change without notice.  
 The ROVER X, Flexpection and Envirosight names and logos are trademarks of Envirosight.  
 Patents and patents pending.